

Product datasheet for **RG219031**

P4HA2 (NM_004199) Human Tagged ORF Clone

Product data:

Product Type:	Expression Plasmids
Product Name:	P4HA2 (NM_004199) Human Tagged ORF Clone
Tag:	TurboGFP
Symbol:	P4HA2
Synonyms:	MYP25
Mammalian Cell Selection:	Neomycin
Vector:	pCMV6-AC-GFP (PS100010)
E. coli Selection:	Ampicillin (100 ug/mL)



[View online »](#)

ORF Nucleotide Sequence:

>RG219031 representing NM_004199
 Red=Cloning site Blue=ORF Green=Tags(s)

TTTTGTAATACGACTCACTATAGGGCGGCCGGAATTCGTCGACTGGATCCGGTACCGAGGAGATCTGCC
 GCC**CGCATCGCC**

ATGAAACTCTGGGTGCTGCATTGCTGATGGCCTGGTTTGGTGTCTGAGCTGTGTGCAGGCCGAATTCT
 TCACCTCTATTGGGCACATGACTGACCTGATTTATGCAGAGAAAGAGCTGGTGCAGTCTCTGAAAGAGTA
 CATCCTTGTGGAGGAAGCCAAGCTTTCCAAGATTAAGAGCTGGGCCAACAAAATGGAAGCCTTGACTAGC
 AAGTCAGCTGCTGATGCTGAGGGCTACCTGGCTCACCTGTGAATGCCTACAACTGGTGAAGCGGCTAA
 ACACAGACTGGCCTGCGCTGGAGGACCTTGTCTGCAGGACTCAGCTGCAGGTTTTATCGCCAACCTCTC
 TGTGCAGCGGCAGTTCTCCCACTGATGAGGACGAGATAGGAGCTGCCAAAGCCCTGATGAGACTTCAG
 GACACATACAGGCTGGACCCAGGCACAATTTCCAGAGGGAACTCCAGGAACCAAGTACCAGGCAATGC
 TGAGTGTGGATGACTGCTTTGGGATGGCCGCTCGGCCTACAATGAAGGGGACTATTATCATACGGTGTT
 GTGGATGGAGCAGGTGCTAAAGCAGCTTGATGCCGGGGAGGAGGCCACCACAACCAAGTACAGGTGCTG
 GACTACCTCAGCTATGCTGTCTCCAGTTGGGTGATCTGCACCGTGCCCTGGAGCTACCCGCCCGCTGC
 TCTCCCTTGACCCAAGCCACGAACGAGCTGGAGGGAATCTGCGGTAATTTGAGCAGTTATTGGAGGAAGA
 GAGAGAAAAACGTTAACAAATCAGACAGAAGCTGAGCTAGCAACCCAGAGGCATCTATGAGAGGCT
 GTGGACTACCTGCCTGAGAGGGATGTTTACGAGAGCCTCTGTCGTGGGGAGGGTGTCAAACCTGACACCC
 GTAGACAGAAGAGGCTTTTCTGTAGGTACCACCATGGCAACAGGGCCCCACAGCTGCTCATTGCCCCCT
 CAAAGAGGAGGACGAGTGGGACAGCCGCACATCGTCAGTACTACGATGTCATGCTGATGAGGAAATC
 GAGAGGATCAAGGAGATCGAAAACCTAACTTGACAGCCACCGTTTCGTGATCCCAAGACAGGATCC
 TCACTGTCGCGAGCTACCGGTTTCCAAAAGCTCCTGGCTAGAGGAAGATGATGACCTGTTGTGGCCCG
 AGTAAATCGTCGGATGCAGCATATCACAGGGTTAACAGTAAAGACTGCAGAATTGTTACAGGTTGCAAA
 TATGGAGTGGGAGGACAGTATGAACCGCACTTCGACTTCTTAGGAATGATGAGCGAGATACTTTCAAGC
 ATTTAGGGACGGGAATCGTGTGGCTACTTTCTTAACTACATGAGTGTGTAGAAGCTGGTGGTCCAC
 CGTCTTCCCTGATCTGGGGCTGCAATTTGGCCTAAGAAGGTACAGCTGTGTTCTGGTACAACCTCTTG
 CGGAGCGGGAAGGTGACTACCGAACAAGACATGCTGCCTGCCCTGTGCTTGTGGCTGCAAGTGGGTCT
 CCAATAAGTGGTCCATGAACGAGGACAGGAGTCTTGAGACCTGTGGATCAACAGAAGTTGAC

ACGCGTACGCGGCCGCTCGAG - GFP Tag - GTTTAA

Protein Sequence:

>RG219031 representing NM_004199
 Red=Cloning site Green=Tags(s)

MKLWVSALLMAWFGVLSVCVQAEFFTSIGHMTDLIYAEKELVQSLKEYILVEEAKLSKIKSWANKMEALTS
 KSAADAEGYLAHPVNAYKLVKRLNTDWPALVDLQDSAAGFIANLSVQRQFFPTDEDEIGAALKMRLQ
 DTYRLDPGTISRGEIPGKYQAMLVSDDCFGMGRSAYNEGDYHYHTVLWMEQVLKQLDAGEEATTTKSQVL
 DYLSYAVFQLGDLHRALELTRRLLSLDPSHERAGNLRIFYEQLLEEEREKTLTNQTEAELATPEGIYER
 VDYLPERDVYESLCRGEVGLTPRRQKRLF CRYHHGNRAPQLLIAPFKEEDEWDSPHIVRYVDMSDEEI
 ERIKEIAKPKLARATVRDPKTVLTVASYRVSKSSWLEEDDPVVARVNRMQHITGLTVKTAELLQVAN
 YGVGGQYEPHDFSRNDRDTFKHLGTGNRVATFLNYMSDVEAGGATVFPDLGAAIWPKKGTAVFWYNLL
 RSGEGDYRTRHAACPVLVGCKWVSNKWFHERGQEFLRPCGSTEVD

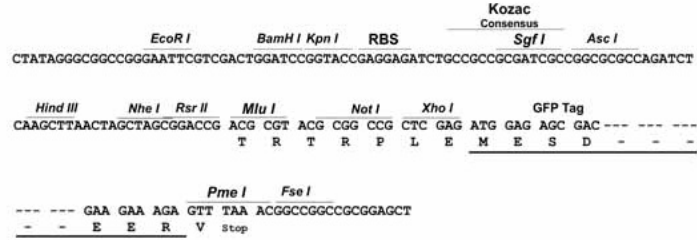
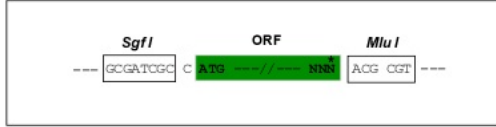
TRTRPLE - GFP Tag - V

Restriction Sites:

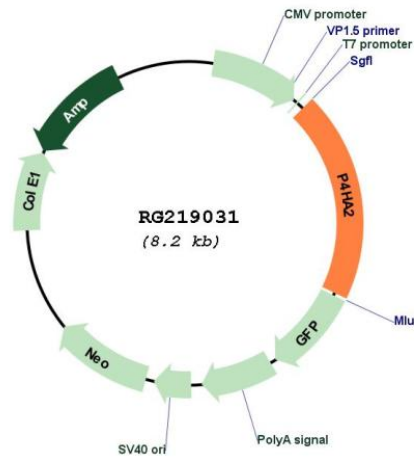
Sgfl-Mlul

Cloning Scheme:

Cloning sites used for ORF Shutting:



Plasmid Map:



ACCN:	NM_004199
ORF Size:	1605 bp
OTI Disclaimer:	<p>Due to the inherent nature of this plasmid, standard methods to replicate additional amounts of DNA in E. coli are highly likely to result in mutations and/or rearrangements. Therefore, OriGene does not guarantee the capability to replicate this plasmid DNA. Additional amounts of DNA can be purchased from OriGene with batch-specific, full-sequence verification at a reduced cost. Please contact our customer care team at custsupport@origene.com or by calling 301.340.3188 option 3 for pricing and delivery.</p> <p>The molecular sequence of this clone aligns with the gene accession number as a point of reference only. However, individual transcript sequences of the same gene can differ through naturally occurring variations (e.g. polymorphisms), each with its own valid existence. This clone is substantially in agreement with the reference, but a complete review of all prevailing variants is recommended prior to use. More info</p>
OTI Annotation:	This clone was engineered to express the complete ORF with an expression tag. Expression varies depending on the nature of the gene.
Components:	The ORF clone is ion-exchange column purified and shipped in a 2D barcoded Matrix tube containing 10ug of transfection-ready, dried plasmid DNA (reconstitute with 100 ul of water).
Reconstitution Method:	<ol style="list-style-type: none"> 1. Centrifuge at 5,000xg for 5min. 2. Carefully open the tube and add 100ul of sterile water to dissolve the DNA. 3. Close the tube and incubate for 10 minutes at room temperature. 4. Briefly vortex the tube and then do a quick spin (less than 5000xg) to concentrate the liquid at the bottom. 5. Store the suspended plasmid at -20°C. The DNA is stable for at least one year from date of shipping when stored at -20°C.
RefSeq:	NM_004199.3
RefSeq Size:	2588 bp
RefSeq ORF:	1608 bp
Locus ID:	8974
UniProt ID:	O15460
Cytogenetics:	5q31.1
Domains:	2OG-Fell_Oxy, P4Hc
Protein Families:	Druggable Genome
Protein Pathways:	Arginine and proline metabolism, Metabolic pathways

Gene Summary:

This gene encodes a component of prolyl 4-hydroxylase, a key enzyme in collagen synthesis composed of two identical alpha subunits and two beta subunits. The encoded protein is one of several different types of alpha subunits and provides the major part of the catalytic site of the active enzyme. In collagen and related proteins, prolyl 4-hydroxylase catalyzes the formation of 4-hydroxyproline that is essential to the proper three-dimensional folding of newly synthesized procollagen chains. Alternatively spliced transcript variants encoding different isoforms have been described. [provided by RefSeq, Jul 2008]