

Product datasheet for **RG219006**

DUOX2 (NM_014080) Human Tagged ORF Clone

Product data:

Product Type:	Expression Plasmids
Product Name:	DUOX2 (NM_014080) Human Tagged ORF Clone
Tag:	TurboGFP
Symbol:	DUOX2
Synonyms:	LNOX2; NOXF2; P138-TOX; TDH6; THOX2
Mammalian Cell Selection:	Neomycin
Vector:	pCMV6-AC-GFP (PS100010)
E. coli Selection:	Ampicillin (100 ug/mL)
ORF Nucleotide Sequence:	>RG219006 representing NM_014080 Red=Cloning site Blue=ORF Green=Tags(s)

TTTTGTAATACGACTCACTATAGGGCGCCGGGAATTCGTCGACTGGATCCGGTACCGAGGAGATCTGCC
GCC**CGATCGCC**

ATGCTCCGTGCAAGACCAGAGGCACTGATGCTCCTGGGAGCTCTTCTGACTGGATCCCTGGGTCCATCGG
GCAGTCAGGACGCACTCTCACTGCCCTGGGAAGTGCAGCGCTATGACGGCTGGTTAAACAACCTGAGGCA
CCACGAGCGTGGTGTGTTGGCTGCCGGTTGCAGCGCCGCTACCAGCCAATTACGCCGACGGTGTGTAT
CAGGCTCTGGAGGAGCCGACGTGCCAACCCGCGCCGGCTCAGCAACGCAGCCACGCGGGCATAGCCG
GCCTGCCGTCGCTCCACAACCGCACCGTACTGGGGTCTTCTTTGGCTACCATGTTCTTTCCGACGTGGT
GAGCGTGGAAACGCCCGTTGCCCGCCGAGTTCTCTCAACATCCGCATCCACCTGGAGACCCCGTGTT
GACCCCGACAGCGCGGGGACGTGGTGCTGCCCTTCCAGAGGAGCCGCTGGGACCCCGAGACCCGGACGGA
GTCCCAGCAACCCCGGGACCTGGCCAACAGGTGACGGGCTGGCTGGACGGCAGCGCCATCTATGGCTC
CTCGCACTCCTGGAGCGACGCGCTGCGGAGCTTCTCGGGGGACAGCTGGCGTCGGGGCCGACCCCGCT
TTCCCCGAGACTCGCAGAACCCCTGCTCATGTGGGCGCGCCGACCCCGCCACCGGGCAGAACGGGC
CCCGGGGCTGTACGCTTCCGGGCAGAGAGAGGAACCGGAACCTTCTGCAGGCGCTGGGCCTGCT
CTGGTTCCGCTACCACAACCTGTGGGCGCAGAGGCTGGCCACCTACCAGAATCGTGTGTATGAGTGGCTGCCA
GCTTCTGCAGAAAACACTCCCGGAGTATACAGGATACCGTCTTCTAGACCCAGCATCTCCCGGA
ATTTGTGGTGGCCTCTGAGCAGTCTTCTCTACCATGGTGCCCTGGTGTCTACATGAGAAATGCCAGC
TGTCAATTCGGAAGGTCTGAACAAGGTTTTCAAAGCTCCCAAGCTCTCAGGGTCTGCAACAATACT
GGATTCGGGAGAACCCCAATCTGAACAGTACCCAGGAGGTGAATGAGCTGCTGCTGGAAATGGCCTCCCA
GATTTCCGAGTTGGAGGACAACATAGTGGTTGAAGATCTGAGGGATTACTGGCCTGGCCCTGGCAAATTC
TCCCGTACAGACTATGTGGCCAGCAGCATCCAACGTGGCCGAGATATGGGGCTGCCAGCTATAGCCAGG
CCCTGCTGGCCTTGGGCTGGACATCCAAGGAAGTGGAGTGATCTCAACCTAATGTGGACCCCGAGT
GCTGGAGGCCACAGCTGCCCTGTACAACAGGACCTATCCAGCTAGAGTGTCTCTTGGGGGCTCCTG



GAGAGCCATGGGGACCCCTGGACCCCTGTTCAAGTCCATTGTCCTCGACCAGTTTGTACGGCTGCGGGATG
 GTGACCGCTACTGGTTTGAAGACACCAGGAATGGGCTGTTCTCCAAGAAGGAGATTGAAGACATCCGAAA
 TACCACCCCTGCGGGACGTGCTGGTCTGTTATCAACATTGACCCAGTGCCTGCAGCCCAATGTCTTT
 GTCTGGCATAAAGGTGCACCCCTGCCCTCAACCTAAGCAGCTCACAACTGACGGCTGCCCCAGTGTGCAC
 CCCTGACTGTGCTTACTTCTTTGAAGGCAGCAGCCCTGGTTTGGCCATCACCATCATTGCTCTGTCTG
 CCTTCCCTTAGTGAGTCTGCTTCTCTGAGTGGTGGCTATTTCCGGGGCCGAGAACAAGAAGCTA
 CAAAAGAACTCAAAGAGAGCGTGAAGAAGGAAGCAGCCAAAGATGGAGTGCCAGCGATGGAGTGCCAG
 GCCCAAGGAGAGGAGCAGTCCCATCATCCAGCTGCTGTGACAGAGTGTCTGCAGGTCTGACACAG
 GCATCTACTGTGCTCCGTGTGGTCCAGCTGCAGCCTCTGCAGCAGGTCAACCTCATCTGTCCAACAAC
 CGAGGATGCCGCACCCTGCTGCTCAAGATCCCTAAGGAGTATGACCTGGTGTGCTGTTTAGTTCTGAAG
 AGGAACGGGGCGCCTTTGTGCAGCAGCTATGGACTTCTGCGTGCCTGGGCTCTGGCCTCCATGTGGC
 TGAGATGAGCGAGAAGGAGCTATTTAGGAAGGCTGTGACAAGCAGCAGCGGGAACGCATCTGGAGATC
 TTCTTCAGACACCTTTTGTCTCAGGTGCTGGACATCAACCAGGCCGACGAGGGACCCTGCCCTGGACT
 CCTCCCAGAAGGTGCGGGAGGCCCTGACCTGCGAGCTGAGCAGGGCCGAGTTTCCGAGTCCCTGGGCT
 CAAGCCCAGGACATGTTTGTGGAGTCCATGTTCTCTGCTGACAAGGATGGCAATGGCTACCTGTCC
 TTCCGAGAGTTTCCGTGGACATCCTGGTGGTCTTCATGAAAGGCTCCCCAGAGGATAAGTCCCGTCTAATGT
 TTACCATGTATGACCTGGATGAGAATGGCTTCTCTCCAAGGACGAATTCTTACCATGATGCGATCCTT
 CATCGAGATCTCCAACAACCTGCCTGTCCAAGGCCAGCTGGCCGAGGTGGTGGAGTCTATGTTCCGGGAG
 TCGGGATTCCAGGACAAGGAGGAGCTGACATGGGAGGATTTTCACTTCATGCTGCGGGACCATGACAGCG
 AGCTCCGCTTACGCAGCTCTGTGTCAAAGGTGGAGGTGGAGGTGGAAATGGTATTAGAGATATCTTTAA
 ACAAACATCAGTGTGAGTCTCGTTCATCACTCGGACACCTGGGGAGCGCTCCACCCCCAGGGACTG
 GGGCCCCCTGCCCAGAAGCCCCAGAGCTGGGAGGCCCTGGACTGAAGAAGAGGTTTGGCAAAAAGGCAG
 CAGTGCCCACTCCCCGGCTGTACACAGAGGCGCTGCAAGAGAAGATGCAGCGAGGCTTCTAGCCCCAAA
 GCTGACAGCAGTACAAGCGCTTCGTGGAGAACTACCGGAGGCACATCGTGTGTGGCAATCTTCTCGGCC
 ATCTGTGTTGGCGTGTTCGAGATCGTCTTACTACTATGGCTTTGCCTCGCCACCCTCGGACATTGCAC
 AGACCACCCTCGTGGCATCATCTGTACAGGACGCGCGCCAGCGTCTCCTTCATGTTCTTATAT
 CTTGCTACCATGTGCCGCAACCTCATAACCTTCTGCGAGAGACTTTCCTCAACCGCTATGTGCCTTTT
 GATGCCGAGTGGACTTCCACCCTGGATCGCCATGGCTGCTGTTGTCTGGCCATTTTGCACAGTGTG
 GCCACGCAGTCAATGTCTACATCTTCTCAGTCAAGCCACTCAGCCTGCTGGCCTGCATATCCCCAACGT
 CTTTGTGAATGATGGGTCCAAGCTTCCCAGAAGTTCTATTGGTGGTCTTCCAGACCGTCCAGGTATG
 ACAGGTGTGCTTCTGCTCCTGGTCTGGCCATCATGTATGCTTTCGCTCCACCACTTCCGCCCGCGCA
 GCTTCCGGGGCTTCTGGCTGACCCACCCTCTACATCCTGCTCTATGCCCTGCTCATCATCCATGGCAG
 CTATGCTCTGATCCAGCTGCCCACTTCCACATCTACTTCTGGTCCCAGCAATCATCTATGGAGGTGAC
 AAGCTGGTGAAGCTGAGCCGGAAGAAGGTGGAGATCAGCGTGGTGAAGGCGGAGCTGCTGCCCTCAGGAG
 TGACCTACCTGCAATTCCAGAGGCCCAAGGCTTTGAGTACAAGTCAAGGACAGTGGGTGCGGATCGCCTG
 CCTGGCTCTGGGGACCACCGAGTACCACCCTTACACTGACCTCCGCGCCCCATGAGGACACACTCAGC
 CTGCACATCCGGGAGTGGGGCCCTGGACCCTCGCCTCAGGGAGATCTACTCATCCCCAAGGGCAATG
 GCTGTGCTGGATACCCAAAGCTGTACCTTGTATGGACCGTTTGGAGAGGGCCATCAGGAGTGGCATAAAT
 TGAGGTGTCAGTGTGGTGGGAGGGGGCATTGGGGTCAACCCCTTGCCTCCATCCTCAAAGACCTGGTC
 TTCAAGTCATCCTTGGGAGCCAAATGCTGTGTAAGAAGATCTACTTCATCTGGGTGACACGGACCCAGC
 GTCAGTTTGTGAGTGGCTGGCTGACATCATCAAGAGGTGGAGGAGAACGACCACCAGGACCTGGTGTCTGT
 GCACATTTATGTCACCCAGCTGGCTGAGAAGTTCGACCTCAGGACCACCATGCTATACATCTGCGAGCGG
 CACTTCCAGAAAGTGTGAACCGGAGTCTGTTACGGGCTGCGCTCCATCACCACCTTTGGCCGTCCTCC
 CCTTCGAGCCCTTCTCAACTCCCTGCAGGAGTCCACCACAGGTGCGCAAGATCGGGGTGTTAGCTG
 CGGCCCTCCAGGAATGACCAAGAATGTAGAGAAGGCTGTGAGCTCGTCAACAGGCAGGACCGAGCCAC
 TTCATGCACCACTATGAGAACTT

ACGCGTACGCGGCCGCTCGAG - GFP Tag - GTTTAA

Protein Sequence: >RG219006 representing NM_014080
 Red=Cloning site Green=Tags(s)

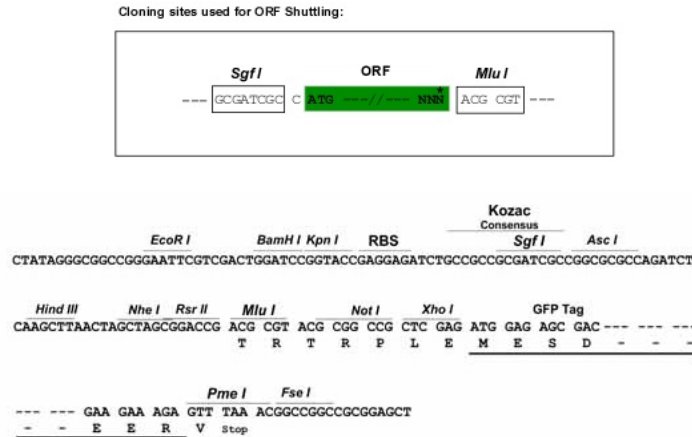
```

MLRARPEALMLLGALLTGSLGPSGSQDALSLPWEVQRYDGFNNLRHHERGAVGCRLQRRVPANYADGVY
QALEEPQLPNPRLSNAATRGIAGLPSLHNRTVLGVFFGYHVLSDVVSVEPTGCPAEFLNIRIPPGDPVF
DPDQQRGDVVLFPQSRWDPETGRSPSNRDLANQVTGWLDSAIYGSSHSWSDALRSFSGGQLASGPDPA
FPRDSQNPLLMWAAPDPATGQNGPRGLYAFGAERGNREPFLQALGLLWFRYHNLWAQRLARQHPDWEDEE
LFQHARKRVIATYQNIAYVEWLPFLQKTLPEYTGYPFLDPSISPEFVASEQFFSTMVPPGVYMRNAS
CHFRKVLNKGQSSQALRVCNNYWIENPNLNSTQEVNELLLGMASQISELEDNIVVEDLRDYWPGPKF
SRTDYVASSIQRGRDMGLPSYSQALLAFGLDIPRNWSDLNPNVDPQVLEATAALYNQDLSQLELLLGLL
ESHGDPGPLFSAIVLDQFVRLRDGDYWFENTRNLFSKKEIEDIRNTTLRDVLAVINIDPSALQPNVF
VWHKGAQPCQPKQLTTDGLPQCAPLTVLDFEGSSPGFAITIIALCCLPLVLLSGVVAYFRGREHKKL
QKKLKESVKKEAAKDGVPAMEWPGPKERSPIIIQLLSDRCLQVLRHLTVLRVVQLQPLQQVNLILSNN
RGCRTLLKIPKEYDLVLLFSSEEERGAFFVQLWDFCVRWALGLHVAEMSEKELFRKAVTKQQRERILEI
FFRHLFAQVLDINQADAGTLPLDSSQKVREALTCELSRAEFAESLGLKQDMFVESMFLADKDGNGYLS
FREFLDILVVFMKGSPEDKSRLMFTMYDLDENGFLSKDEFFTMMSFIEISNNCLSKAQLAEVVEVMFRE
SGFQDKEELTWEDFHMLRDHSELRFQTCVKGGGGGGNGIRDIFKQNI SCRVSFITRTPGERSHPQGL
GPPAPEAPELGGPGLKKRFGKKAAPTPTLYTEALQEKMQRGFLAQKLQYKRFVENYRRHIVCVAIFSA
ICVGVFADRAYYYGFASPPSDIAQTTLVGIILSRGTAASVSFMFSYILLTMCNRLITFLRETFLNRYVFP
DAAVDFHRWIAMAAVVLAALHSAGHAVNYYIFSVSPLSLLACIFPNVFNVDGSKLPQKFYWWFFQTVPGM
TGVLLLLVLAIMYVFAHHFRRSFRGFWLTHLYILLYALLIIHGSYALIQLPTFHIYFLVPAIIYGGD
KLVSLSRKKVEISVVKAEALLPSGVTYLQFQRPQGFYKSGQWVRIACLALGTTEYHPFTLSAPHEDTSL
LHIRAVGPWTTTLREIYSSPKGNGCAGYPKLYLDGPFGEHQEWHKFEVSVLVGGGIGVTPFAISILKDLV
FKSSLGSQMLCKKIYFIWVTRTQRQFEWLADIIQEVEENDHQDLVSVHIYVYVQLAEKFDLRTTMLYICER
HFQKVLNRSFLTGLRSITHFGRPPFEPFNSLQEVHPQVRKIGVFCGPPGMTKNVEKACQLVNRQDRAH
FMHHYENF
    
```

TRTRPLE - GFP Tag - V

Restriction Sites: SgfI-MluI

Cloning Scheme:

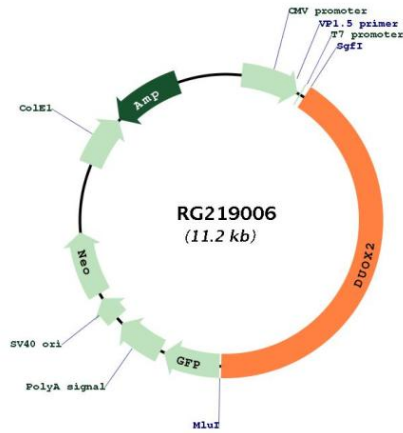


ACCN: NM_014080

ORF Size: 4644 bp

OTI Disclaimer:	<p>Due to the inherent nature of this plasmid, standard methods to replicate additional amounts of DNA in E. coli are highly likely to result in mutations and/or rearrangements. Therefore, OriGene does not guarantee the capability to replicate this plasmid DNA. Additional amounts of DNA can be purchased from OriGene with batch-specific, full-sequence verification at a reduced cost. Please contact our customer care team at custsupport@origene.com or by calling 301.340.3188 option 3 for pricing and delivery.</p> <p>The molecular sequence of this clone aligns with the gene accession number as a point of reference only. However, individual transcript sequences of the same gene can differ through naturally occurring variations (e.g. polymorphisms), each with its own valid existence. This clone is substantially in agreement with the reference, but a complete review of all prevailing variants is recommended prior to use. More info</p>
OTI Annotation:	This clone was engineered to express the complete ORF with an expression tag. Expression varies depending on the nature of the gene.
Components:	The ORF clone is ion-exchange column purified and shipped in a 2D barcoded Matrix tube containing 10ug of transfection-ready, dried plasmid DNA (reconstitute with 100 ul of water).
Reconstitution Method:	<ol style="list-style-type: none"> 1. Centrifuge at 5,000xg for 5min. 2. Carefully open the tube and add 100ul of sterile water to dissolve the DNA. 3. Close the tube and incubate for 10 minutes at room temperature. 4. Briefly vortex the tube and then do a quick spin (less than 5000xg) to concentrate the liquid at the bottom. 5. Store the suspended plasmid at -20°C. The DNA is stable for at least one year from date of shipping when stored at -20°C.
RefSeq:	NM_014080.3 , NP_054799.3
RefSeq Size:	6376 bp
RefSeq ORF:	4647 bp
Locus ID:	50506
UniProt ID:	Q9NRD8
Cytogenetics:	15q21.1
Protein Families:	Druggable Genome, Transmembrane
Gene Summary:	The protein encoded by this gene is a glycoprotein and a member of the NADPH oxidase family. The synthesis of thyroid hormone is catalyzed by a protein complex located at the apical membrane of thyroid follicular cells. This complex contains an iodide transporter, thyroperoxidase, and a peroxide generating system that includes this encoded protein and DUOX1. This protein is known as dual oxidase because it has both a peroxidase homology domain and a gp91phox domain. [provided by RefSeq, Jul 2008]

Product images:



Circular map for RG219006