

Product datasheet for **RG218928**

ASCL4 (NM_203436) Human Tagged ORF Clone

Product data:

Product Type: Expression Plasmids
Product Name: ASCL4 (NM_203436) Human Tagged ORF Clone
Tag: TurboGFP
Symbol: ASCL4
Synonyms: ASH-4; bHLHa44; HASH4
Mammalian Cell Selection: Neomycin
Vector: pCMV6-AC-GFP (PS100010)
E. coli Selection: Ampicillin (100 ug/mL)
ORF Nucleotide Sequence: >RG218928 representing NM_203436
Red=Cloning site Blue=ORF Green=Tags(s)

TTTTGTAATACGACTCACTATAGGGCGGCCGGAATTCGTCGACTGGATCCGGTACCGAGGAGATCTGCC
 GCCCGATCGCC

ATGATGGAGACGCGTAACCGGCGGAACGGCTGGCCTTGCCATACTCGCTGCGCACCGCGCCCTGGGCG
TTCCGGGGACCTGCCCGGACTCCCGGGAGGGACCCCTCAGGGTCGCCCTGCGTCTGGACGCCGCGTG
CTGGGAGTGGGCGCGCAGCGGTGCGCACGGGGATGGCAGTACTTGCCCGTGCCGCTGGACAGCGCCTTC
GAGCCCGCCTTCTCCGCAAGCGCAACGAGCGCGAGCGGCGAGCGGGTGCCTGCGTGAACGAGGGCTATG
CGCGCCTCCGAGACCACCTGCCCGGGAGCTGGCAGACAAGCGCCTCAGCAAAGTGGAGACGCTCCGCGC
TGCCATCGACTACATCAAGCACCTGCAGGAGCTGCTGGAGCGCCAGGCCTGGGGGCTCGAGGGCGCGGCC
GGCGCCGTCGCCAGCGCAGGGCGGAATGCAACAGCGACGGGGAGTCCAAGGCCTCTTCGGCGCCTTCGC
CCAGCAGCGAGCCGAGGAGGGGGCAGC

AGCGGACCGACGCGTACGCGGCCGCTCGAG - GFP Tag - GTTTAA

Protein Sequence: >RG218928 representing NM_203436
Red=Cloning site Green=Tags(s)

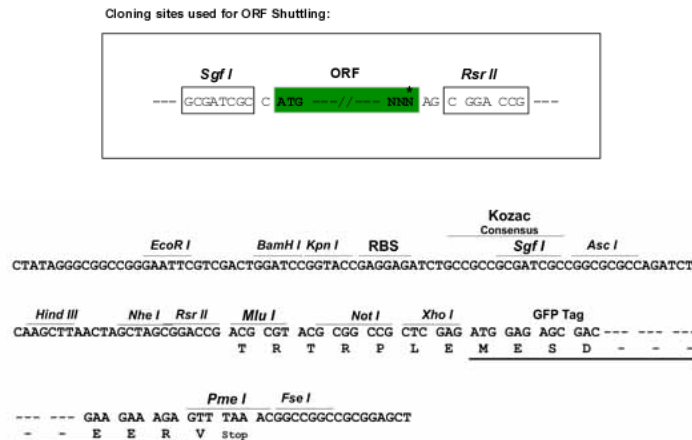
MMETRKAERLALPYSLRTAPLGVPTLPGLPRRDPLRVALRLDAACWEWARSGCARGWQYLPVPLDSAF
 EPAFLRKNERERQVRVCVNEGYARLRDHLPRELADKRLSKVETLRAAIDYIKHLQELLERQAWGLEGA
 GAVPQRRRAECNSDGESKASSAPSPSSEPEEGGS

SGPTRTRRLE - GFP Tag - V

Restriction Sites: SgfI-RsrII



[View online »](#)

Cloning Scheme:


ACCN: NM_203436

ORF Size: 519 bp

OTI Disclaimer: The molecular sequence of this clone aligns with the gene accession number as a point of reference only. However, individual transcript sequences of the same gene can differ through naturally occurring variations (e.g. polymorphisms), each with its own valid existence. This clone is substantially in agreement with the reference, but a complete review of all prevailing variants is recommended prior to use. [More info](#)

OTI Annotation: This clone was engineered to express the complete ORF with an expression tag. Expression varies depending on the nature of the gene.

Components: The ORF clone is ion-exchange column purified and shipped in a 2D barcoded Matrix tube containing 10ug of transfection-ready, dried plasmid DNA (reconstitute with 100 ul of water).

Reconstitution Method:

1. Centrifuge at 5,000xg for 5min.
2. Carefully open the tube and add 100ul of sterile water to dissolve the DNA.
3. Close the tube and incubate for 10 minutes at room temperature.
4. Briefly vortex the tube and then do a quick spin (less than 5000xg) to concentrate the liquid at the bottom.
5. Store the suspended plasmid at -20°C. The DNA is stable for at least one year from date of shipping when stored at -20°C.

Note: Plasmids are not sterile. For experiments where strict sterility is required, filtration with 0.22um filter is required.

RefSeq: [NM_203436.2](#), [NP_982260.2](#)

RefSeq Size: 2260 bp

RefSeq ORF: 519 bp

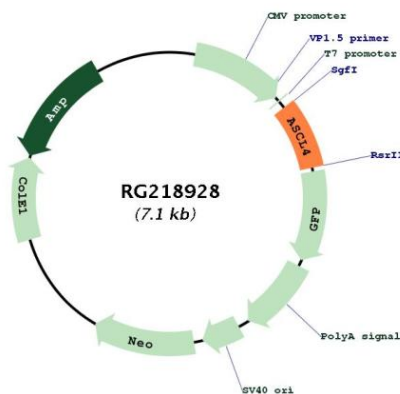
Locus ID: 121549

UniProt ID: [Q6XD76](#)

Cytogenetics: 12q23.3

Gene Summary: Basic helix-loop-helix transcription factors, such as ASCL4, are essential for the determination of cell fate and the development and differentiation of numerous tissues (Jonsson et al., 2004 [PubMed 15475265]).[supplied by OMIM, Mar 2008]

Product images:



Circular map for RG218928