

## Product datasheet for **RG218910**

### MAML3 (NM\_018717) Human Tagged ORF Clone

#### Product data:

Product Type:	Expression Plasmids
Product Name:	MAML3 (NM_018717) Human Tagged ORF Clone
Tag:	TurboGFP
Symbol:	MAML3
Synonyms:	CAGH3; ERDA3; GDN; MAM-2; mam-3; MAM2; TNRC3
Mammalian Cell Selection:	Neomycin
Vector:	pCMV6-AC-GFP (PS100010)
E. coli Selection:	Ampicillin (100 ug/mL)
ORF Nucleotide Sequence:	>RG218910 representing NM_018717 Red=Cloning site Blue=ORF Green=Tags(s)

TTTTGTAATACGACTCACTATAGGGCGGCCGGAATTCGTCGACTGGATCCGGTACCGAGGAGATCTGCC  
GCC**CGATCGCC**

ATGGGGGATTTTCGCAGCCCCGCTGCTGCCGGAATGGCAGTAGTATTTGCATCAACAGTAGCCTGAACA  
GCAGCCTCGGCGGGCCGGGATCGGTGTGAATAACTCCAATAGTACTCCCGTGTCTCCGAGTAGCAA  
TCACCCGCAGCCGGTGGATGCGCGGCTCCGGGGCCCCGGCGCGGTTCCGCGCCGTTCCCAAGCAC  
AGCACCGTGGTGGAGCGCTCCGCCAGCGCATCGAGGGCTGCCGTCCGCCACCACGTCAACTGCGAGAACA  
GGTACCAGCAGGCTCAGGTGGAGCAGCTGGAGCTGGAGCGCCGGACACCGTGAGCCTCTACCAGCGGAC  
CCTGGAGCAGAGGGCCAAGAAATCGGGCGCCGGCACCGGCAAACAGCAGCACCCGAGCAAACCCAGCAA  
GATGCGGAGGCTGCCTCGGCGGAGCAGAGGAACACACGCTGATCATGCTACAAGAGACTGTGAAAAGGA  
AGTTGGAAGGAGCTCGATCACCCTTAATGGAGACCAGCAGAATGGTGCTTGTGATGGGAATTTTCTCC  
GACTAGCAAACGAATTCGAAAGGACATTTCTGCGGGATGGAAGCCATCAACAATTTGCCAGTAACATG  
CCTACTGCCTTCAGCTTCTCCTTCCACCACTTGACCTGAAACCTTCTTTGCCCTTGAGAACAGTGGAA  
CTCACACTCCTGGGCTTCTAGAAGATCTAAGTAAGAATGGTAGGCTCCCTGAGATTAACCTCCTGTCAA  
CGGTTGCAGTGACCTGGAGGATAGCTTACCATCTTGCAGAGCAAAGACCTCAAACAAGAACCTCTCGAT  
GACCTACTTGCATAGACACATCAGAAACATCTTTCAAATCAGAACAAGCTGTTCTCAGACATTAATC  
TGAATGATCAGGAGTGGCAAGAATTAATAGATGAATTGGCCAACACGGTTCCTGAGGATGACATACAGGA  
CCTGTTCAACGAAGACTTTGAAGAGAAGAAGGAGCCAGAATTCTCGCAGCCAGCAACTGAGACCCCTCTC  
TCCCAGGAGAGTGCAGCGTGAAGAGCGACCCCTCTCACTCTCCCTTCGCACATGTCTCCATGGGATCTC  
CCCAGGCGAGGCCTTCTTCTTGGTCTCCCTTTTCTACTGTCTCCACGGCCACTAGTTTACCTTCTGT  
TGCCAGCACTCCCGCAGCTCAAACCTGCAAGCTCACCAGCAAAGTGTGCTGTCCAGTCCCCTCAAAC  
CAAACCAAGCCACACTCCAGGCAAGCTCCACCTCGGCTGGAATGGTTATCTCCTGAATCCGGCAG  
CAGTGACAGTGGCCGGTTCAGCGTCAGGCGCTGTGGCTGTGCCAGCTCTGACATGTCTCCAGCAGAACA  
GCTCAAACAGATGGCTGCACAGCAGCAACAAGGGCCAAACTCATGCAGCAGAAACAGCAACAGCAACAG



[View online >](#)

CAGCAGCAGCAGCAGCAGCAGCAACAGCAGCAGCAGCAGCAGCAACAGCACTCAAATCAGACTTCAAATT  
 GGTCTCCCTTAGGACCTCCCTCTAGTCCATATGGAGCAGCTTTTACTGCAGAAAAACCAATAGCCCAAT  
 GATGTACCCCAAGCCTTTAACAAACCAAAACCCCTATAGTGCCCAATGGCAAACAACCTGCAGAAGACA  
 ACAATGAATAACTACCTCCCTCAGAATCACATGAATATGATCAATCAGCAGCCAAATAAATTGGGTACAA  
 ACTCCTTAAACAAACAGCACAATATTCTGACTTATGGCAACACTAAACCCCTGACCCACTCAATGCAGA  
 CCTGAGTCAGAGGATGACACCACCAGTGGCCAACCCCAACAAAAACCCCTTGATGCCGTATATCCAGCAG  
 CAGCAACAGCAGCAGCAACAGCAACAGCAGCAGCAGCAGCAGCAGCAGCCGCCACTCCACAGCTCCAGG  
 CCCCCAGGGCACACCTGAGCGAAGACCAGAAACGCCTGCTTCTCATGAAGCAGAAAAGGAGTGATGAATCA  
 GCCCATGGCTTACGCTGCACTTCCATCCCACGGTCAGGAGCAGCATCCAGTTGGACTTCCCCGAACCACA  
 GGCCCCATGCAGTCTCCGTGCCCCAGGCTCAGGTGGCATGGTCTCAGGAGCCAGTCCCGCAGGCCCCG  
 GCTTCTGGGCAGCCAGCCCAAGCAGCCATCATGAAGCAGATGCTCATTGATCAGCGGGCCAGTTGAT  
 AGAGCAGCAGAAGCAACAGTTCTGCGGGAGCAAAGGCAGCAGCAGCAGCAGCAGCAGATTTTGGCG  
 GAACAGCAGTTGCAGCAATCACATCTACCCGGCAGCACCTCCAGCCACAGCGGAATCCATACCCAGTGC  
 AGCAGGTCAATCAGTTTCAAGGTTCTCCCAGGATATAGCAGCCGTAAGAAGCCAAGCAGCCCTCCAGAG  
 CATGCGAACGTCACGGCTGATGGCACAGAACGCAGGCATGATGGGAATAGGACCCTCCAGAACCCCTGGG  
 ACGATGGCCACCCGAGCTGCGCAGTCGGAGATGGGACTGGCCCTTATAGCACCAGCCTACCAGCCAAC  
 CAGGAATGTACAATATGAGCACAGGCATGACCCAAATGTTGCAGCATCCAAACCAAAGTGGCATGAGCAT  
 CACACATAACCAAGCCCAGGGACCGAGGCAACCTGCCTCTGGGCAGGGGTTTGAATGGTGAAGTGGCTTT  
 GGTGAGCAGTGTGGTGAACCTCAGCCATTACCCAGCAACATCCACAGATGAAAGGGCCAGTAGGCCAGG  
 CCTTGCCTAGGCCCAAGCCCTCAAGGCTGCAGAGCCTTATGGGAACAGTCCAGCAAGGAGCACAAGG  
 CTGGCAACAGAGGAGCTTGCAGGGCATGCCTGGGAGGACTAGTGGAGAATTGGGACCATTCAACAATGGC  
 GCCAGTACCCTCTTCAAGCTGGCAGCCGAGACTGACCAAGCAGCACTCCACAGGGACTGAGCCAGT  
 CAGTCGTGGATGCTAACACGGGCACAGTGAAGCCCTCAACCCAGCTGCCATGGTTCGGCAGATGATGCC  
 ATCGCTCCCGGGCAGCAAGGCACAGCCAGGCGAGGCCAATGGTCATGTCTGGCCTGAGCCAGGGAGTC  
 CCAGGCATGCCAGCGTTAGCCAGCCCGCCAGCACAGCAGCAGATACCCAGTGGCAGCTTTGCTCCAAGCA  
 GCCAGAGCCAAGCCTATGAGCGGAATGCCCTCAGGACGTGTCATACAATTACAGTGGCGACGGAGCTGG  
 GGGTTCTTCCCTGGCCTCCCGGACGGTGCAGACCTTGTGGACTCCATCATCAAAGGCGGGCCAGGGGAC  
 GAGTGGATGCAGGAGCTTATGAATTGTTTGGTAACCC

ACGCGTACGCGGGCCGCTCGAG - GFP Tag - GTTTAA

Protein Sequence:

>RG218910 representing NM\_018717  
 Red=Cloning site Green=Tags(s)

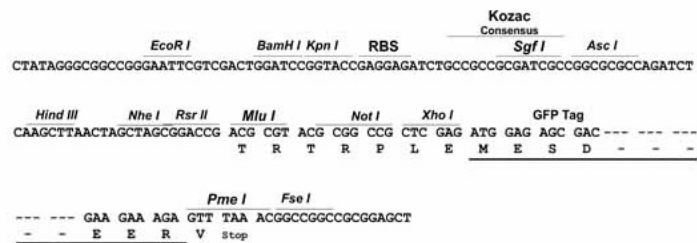
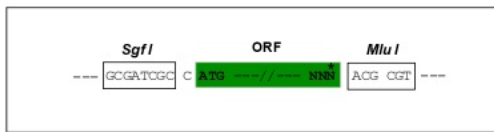
MGDFAAPAAAANGSSICINSSLNSSLGGAGIGVNNTPNSTPAAPSSNHPAAGGCGSGGPGGGSAAVPKH  
 STVVERLRQRIEGCRRHHVNCENRYQQAQVEQLELERRDVS LYQRTLEQRAKKSGAGTGKQHPKSPKQQ  
 DAEAASAEQRNHTLIMLQETVKKRLEGARSPNGDQQNGACDGNF SPTSKRIRKDISAGMEAINNLP SNM  
 PLPSASPLHLQDLKPSLPLQNSGTHTPGLLEDL SKNGRLPEIKLPVNGCSDLEDSFTILQSKDLKQEPLD  
 DPCTCIDTSETLSNQNKLFSDINLNDQEWQEL IDELANTVPEDDIQDLFNEDFEEKKEPEFSQPATETPL  
 SQESASVKSDFSHSPFAHVSVMGSPQARPSGPPFSTVSTATSLPSVASTPAAPNPASSPANCAVQSPQT  
 PNQAHTPGQAPPRPGNGYLLNPAAVTVAGSASGPVAVPSSDMSPAELKQMAAQQQRAKLMQKQQQQQ  
 QQQQQQQQQQQQQQHSNQTSNWSPLGPPSSPYGAAFTAEPNSPMMYPQAFNNQNPVPPMANNLQKT  
 TMNNYLQNHMMINQQPNLGTNSLNKQHNIL TYGNTKPLTHFNADLSQRMTPPVANPNKNLMPYIQQ  
 QQQQQQQQQQQQQQPPPPQLQAPRAHL SEDQKRLLLMKQKQVMNQPMAYAALPSHGQEQHPVGLPRTT  
 GPMQSSVPPGSGGMVSGASPAGPGFLGSQPQAAIMKQML IDQRAQLIEQQKQQFLREQRQQQQQQQILA  
 EQQLQQSHLPRQHLQPQRNPYPVQVNFQGSQPDIAAVRSQAALQSMRTSRLMAQNAGMMGIGPSQNP  
 TMATAAAQSEMGLAPYSTTPTSQPGMYNMSTGMTQMLQHPNQSGMSITHNQAQGPQPASQGVGMVSGF  
 GQSM LVNSAITQHPQMKGPVQALPRPQAPPRLQSLMGTVQGAQSWQQRSLQGMGPRTSGELGPFNNG  
 ASYPLQAGQPRLTKQHFQGLSQSVVDANTGTVRTLNPAAMGRQMMPSLPGQGT SQARPMVMSGLSQGV  
 PGMPAFSQPPAQQIPSGSFAPSSQSQA YERNAPQDVSYNYSGDGAGGSFPGLPDGADLVDSIIKGGPGD  
 EWMQELDELFGNP

TRTRPLE - GFP Tag - V

Restriction Sites: SgfI-MluI

Cloning Scheme:

Cloning sites used for ORF Shuttling:

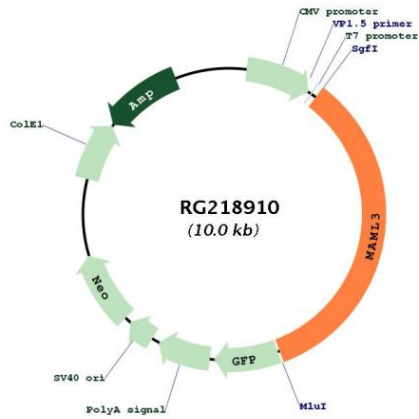


ACCN: NM\_018717

ORF Size: 3399 bp

<b>OTI Disclaimer:</b>	Due to the inherent nature of this plasmid, standard methods to replicate additional amounts of DNA in E. coli are highly likely to result in mutations and/or rearrangements. Therefore, OriGene does not guarantee the capability to replicate this plasmid DNA. Additional amounts of DNA can be purchased from OriGene with batch-specific, full-sequence verification at a reduced cost. Please contact our customer care team at <a href="mailto:custsupport@origene.com">custsupport@origene.com</a> or by calling 301.340.3188 option 3 for pricing and delivery.
	The molecular sequence of this clone aligns with the gene accession number as a point of reference only. However, individual transcript sequences of the same gene can differ through naturally occurring variations (e.g. polymorphisms), each with its own valid existence. This clone is substantially in agreement with the reference, but a complete review of all prevailing variants is recommended prior to use. <a href="#">More info</a>
<b>OTI Annotation:</b>	This clone was engineered to express the complete ORF with an expression tag. Expression varies depending on the nature of the gene.
<b>Components:</b>	The ORF clone is ion-exchange column purified and shipped in a 2D barcoded Matrix tube containing 10ug of transfection-ready, dried plasmid DNA (reconstitute with 100 ul of water).
<b>Reconstitution Method:</b>	<ol style="list-style-type: none"> <li>1. Centrifuge at 5,000xg for 5min.</li> <li>2. Carefully open the tube and add 100ul of sterile water to dissolve the DNA.</li> <li>3. Close the tube and incubate for 10 minutes at room temperature.</li> <li>4. Briefly vortex the tube and then do a quick spin (less than 5000xg) to concentrate the liquid at the bottom.</li> <li>5. Store the suspended plasmid at -20°C. The DNA is stable for at least one year from date of shipping when stored at -20°C.</li> </ol>
<b>RefSeq:</b>	<a href="#">NM_018717.3</a> , <a href="#">NP_061187.2</a>
<b>RefSeq Size:</b>	7086 bp
<b>RefSeq ORF:</b>	3417 bp
<b>Locus ID:</b>	55534
<b>UniProt ID:</b>	<a href="#">Q96JK9</a>
<b>Cytogenetics:</b>	4q31.1
<b>Protein Families:</b>	Transcription Factors
<b>Protein Pathways:</b>	Notch signaling pathway
<b>Gene Summary:</b>	Acts as a transcriptional coactivator for NOTCH proteins. Has been shown to amplify NOTCH-induced transcription of HES1.[UniProtKB/Swiss-Prot Function]

Product images:



Circular map for RG218910