

Product datasheet for **RG218898**

Syntenin 2 (SDCBP2) (NM_015685) Human Tagged ORF Clone

Product data:

Product Type: Expression Plasmids
Product Name: Syntenin 2 (SDCBP2) (NM_015685) Human Tagged ORF Clone
Tag: TurboGFP
Symbol: Syntenin 2
Synonyms: SITAC; SITAC18; ST-2; ST2
Mammalian Cell Selection: Neomycin
Vector: pCMV6-AC-GFP (PS100010)
E. coli Selection: Ampicillin (100 ug/mL)
ORF Nucleotide Sequence: >RG218898 representing NM_015685
Red=Cloning site Blue=ORF Green=Tags(s)

TTTTGTAATACGACTCACTATAGGGCGGCCGGAATTCGTCGACTGGATCCGGTACCGAGGAGATCTGCC
GCC**CGATCGCC**

ATGGTGGCACCAGTAACCGGGTACAGCCTGGGCGTGGCGAGCTGAGATCAAGCCCGGGTGCCGAGAG
TCCACCTGTGCAAGGACGAGCGCGCAAGACCGGGCTGAGGCTGCGGAAGGTCGACCAGGGGCTCTTTGT
GCAGTTGGTCCAGGCCAACCCCTGCATCCCTTGTGGGCTGCGCTTTGGGACCAGCTCTGCAGATT
GACGGCGTGACTGTGCTGGGTGGAGCTCGCACAAGCCCATCAGGTGGTGAAGAAGGCATCAGGCGATA
AGATTGTCGTGGTGGTTCGGGACAGGCCGTTCCAGCGGACTGTCACCATGCACAAGGACAGCATGGGCCA
CGTCGGCTTCGTGATCAAGAAGGGGAAGATTGTCTCTCTGGTCAAAGGGAGTTCTGCGGCCCGCAACGGG
CTCCTCACCAACCACTACGTGTGTGAGGTAGACGGCAGAAATGTTATCGGGCTGAAGGACAAAAAGATCA
TGGAGATTCTGGCCACGGCTGGGAACGTTGCACCCTGACCATCATCCCCAGTGTGATCTACGAGACAT
GGTCAAAAAGTTGCCCTCCAGTCTGCTCCACCACCATGGACCACTCCATCCCAGATGCC

ACGCGTACGCGGCCGCTCGAG - GFP Tag - GTTTAA

Protein Sequence: >RG218898 representing NM_015685
Red=Cloning site Green=Tags(s)

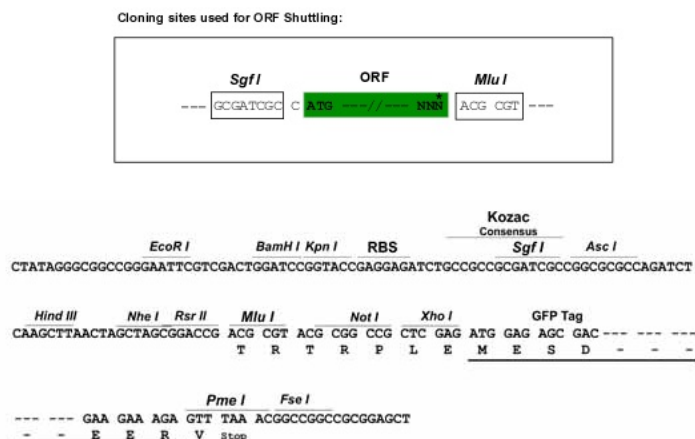
MVAPVTGYSLGVRRAEIKPGVREIHLCKDERGKTGLRLRKVDQGLFVQLVQANTPASLVGLRFGDQLLQI
DGRDCAGWSSHKAHQVVKASGDKIVVVVRDRPFQRTVTMHKDSMGHVGFVIKKGKIVSLVKGSSAARNG
LLTNHYVCEVDGQNVIGLKDKKIMEILATAGNVVTLTIIPSVIYEHMVKKLPPVLLHHTMDHSIPDA

TRTRPLE - GFP Tag - V

Restriction Sites: Sgfl-MluI



[View online »](#)

Cloning Scheme:


ACCN: NM_015685

ORF Size: 621 bp

OTI Disclaimer: The molecular sequence of this clone aligns with the gene accession number as a point of reference only. However, individual transcript sequences of the same gene can differ through naturally occurring variations (e.g. polymorphisms), each with its own valid existence. This clone is substantially in agreement with the reference, but a complete review of all prevailing variants is recommended prior to use. [More info](#)

OTI Annotation: This clone was engineered to express the complete ORF with an expression tag. Expression varies depending on the nature of the gene.

Components: The ORF clone is ion-exchange column purified and shipped in a 2D barcoded Matrix tube containing 10ug of transfection-ready, dried plasmid DNA (reconstitute with 100 ul of water).

Reconstitution Method:

1. Centrifuge at 5,000xg for 5min.
2. Carefully open the tube and add 100ul of sterile water to dissolve the DNA.
3. Close the tube and incubate for 10 minutes at room temperature.
4. Briefly vortex the tube and then do a quick spin (less than 5000xg) to concentrate the liquid at the bottom.
5. Store the suspended plasmid at -20°C. The DNA is stable for at least one year from date of shipping when stored at -20°C.

RefSeq: [NM_015685.3](#), [NP_056500.2](#)

RefSeq Size: 1274 bp

RefSeq ORF: 624 bp

Locus ID: 27111

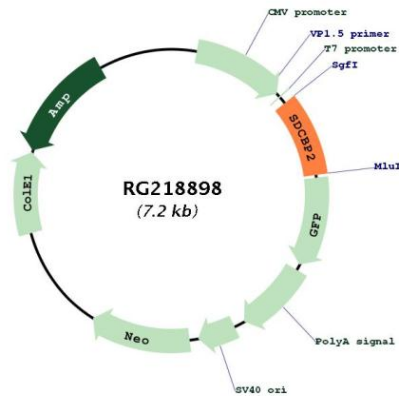
UniProt ID: [Q9H190](#)

Cytogenetics: 20p13

Domains: PDZ

Gene Summary: The protein encoded by this gene contains two class II PDZ domains. PDZ domains facilitate protein-protein interactions by binding to the cytoplasmic C-terminus of transmembrane proteins, and PDZ-containing proteins mediate cell signaling and the organization of protein complexes. The encoded protein binds to phosphatidylinositol 4, 5-bisphosphate (PIP2) and plays a role in nuclear PIP2 organization and cell division. Alternatively spliced transcript variants encoding multiple isoforms have been observed for this gene. Read-through transcription also exists between this gene and the upstream FKBP1A (FK506 binding protein 1A, 12kDa) gene, as represented in GeneID:100528031. [provided by RefSeq, Sep 2011]

Product images:



Circular map for RG218898