

Product datasheet for **RG218893**

SART2 (DSE) (NM_001080976) Human Tagged ORF Clone

Product data:

Product Type:	Expression Plasmids
Product Name:	SART2 (DSE) (NM_001080976) Human Tagged ORF Clone
Tag:	TurboGFP
Symbol:	SART2
Synonyms:	DS-epi1; DSEP; DSEPI; EDSMC2; SART-2; SART2
Mammalian Cell Selection:	Neomycin
Vector:	pCMV6-AC-GFP (PS100010)
E. coli Selection:	Ampicillin (100 ug/mL)



[View online »](#)

**ORF Nucleotide
Sequence:**

>RG218893 representing NM_001080976
 Red=Cloning site Blue=ORF Green=Tags(s)

TTTTGTAATACGACTCACTATAGGGCGGCCGGGAATTCGTCGACTGGATCCGGTACCGAGGAGATCTGCC
 GCC**CGCATCGCC**

ATGAGGACTCACACACGGGGGGCTCCAGTGTGTTTTTCATATTTGCTTTGCTTTGTGTGCAGCCTACA
 TACCGACGAGAAACCCAGAAGTTATGATTCCCTTCACCAATGCCAACTACGACAGCCATCCCATGCTGTA
 CTTCTCCAGGGCAGAAGTGGCGGAGCTGCAGCTCAGGGCTGCCAGCTCGCACGAGCACATTGCAGCCCGC
 CTCACGGAGGCTGTGCACACGATGCTGTCCAGCCCTTGAATACCTCCCTCCCTGGGATCCCAAGGACT
 ACAGTGCCCGCTGGAATGAAATTTTTGAAACAACCTGGGTGCCTTGGCAATGTTCTGTGTGCTGTATCC
 TGAGAACATTGAAGCCCAGACATGGCCAAAGACTACATGGAGAGGATGGCAGCGCAGCCTAGTTGGTTG
 GTGAAAGATGCTCCTGGGATGAGGTCCCGCTTGCTCACTCCCTGGTTGGTTTTGCCACTGCTTATGACT
 TCTTGTAACACTACCTGAGCAAGACACAACAGGAGAAGTTTCTTGAAGTGATTGCCAATGCCTCAGGTA
 TATGTATGAAACTTCATACAGGAGAGGATGGGGATTTCAATACCTGCACAATCATCAGCCCACTAGT
 ATGGCTTTGCTACGGGAAGCCTAGTCCTGATGAATCAAGGATATCTTCAAGAAGCCTACTTATGGACCA
 AACAAAGTCTGACCATCATGGAGAAATCTCTGGTCTTGCTCAGGGAGGTGACGGATGGCTCCCTCTATGA
 AGGAGTTGCGTATGGCAGCTACACCACTAGATCACTCTTCCAATACATGTTTCTCGTCCAGAGGCACTTC
 AACATCAACCACTTTGGCCATCCGTGGCTTAAACAACACTTTGCATTTATGTATAGAACCATCCTGCCAG
 GGTTTCAAAGGACTGTGGCTATTGCGGACTCAAATTACAAGTGGTTTATGGTCCAGAAAGCCAATTAGT
 GTTCCTTGATAAATTTGTATGCGTAATGGCAGTGGTAAGTGGCTAGTGACCAATCAGAAGGAACCGT
 GTGGTGGAAAGTCCAGGAACACCATCAAAGGGCAGCGCTGGTGCACTCTGCACACAGAATTTCTCTGGT
 ATGATGGCAGCTTGAAATCGGTTCTCTCCAGACTTTGGCACCCTACACTGCATTATTTTGAAGACTG
 GGGTGTCTGACTTATGGAAGTGCACTACCTGCAGAAATCAATAGATCTTTCCTTTCCCTCAAGCTGGA
 AAAGTGGGGGACGTGCAATATATGACATTGTCCACAGAAACAAATACAAAGATTGGATCAAAGGATGGA
 GAAATTTAATGCAGGGCATGAACATCCTGATCAAACTCATTTACTTTTGTCCCAATGGTGTGCCTTT
 CATTACTGAGGCTCTGTACGGGCCAAAGTACACCTTCTTCAACAATGTTTTGATGTTTTCCCGAGCTGTG
 TCAAAGAGCTGCTTTCTCCCTGGGTGGGTGAGTGCAGAGAGGAGAGAAAAATGGGGTGGTTTTTCAT
 AGCATGACCTGGCAGCTAGTTGTGAGGGGAGGGTGGTGCAGCAGAGGAGAGAAAAATGGGGTGGTTTTTCAT
 CCGAGGAGAAGGTGTGGGAGCTTATAACCCCACTCAACCTGAAGAATGTTGAGAGGAATCTCATCCTC
 CTACATCCACAGCTGCTTCTCCTGTAGACCAATACACCTGGGAGAGGAGAGTCCCTTGGAGACAGCAG
 CGAGCTTCTTCCATAATGTGGATGTTCTTTTGGAGAGACTGTGGTAGATGGTGTCCATGGGGCTTTCAT
 CAGGCAGAGAGATGGTCTCTATAAAATGTACTGGATGGACGATACTGGCTACAGCGAGAAAGCAACCTTT
 GCCTCAGTGACATATCCTCGGGGCTATCCCTACAACGGGACAACTATGTGAATGTCACCATGCACCTCC
 GAAGTCCCATCACCAGGGCAGCTTACCTCTTATAGGGCCATCTATAGATGTTGAGAGCTTCACTGTCCA
 CGGAGACTCTCAGCAACTGGATGTGTTTCATAGCCACCAGCAACATGCCTACGCCACATACCTGTGGACA
 GGTGAGGCCACAGGACAGTCTGCCTTTGCACAGGTCATTGCTGATCGTCACAAAATCTGTTTGACCGGA
 ATTCAGCCATCAAGAGCAGCATTGTCCCTGAGGTGAAGGACTATGCTGCTATTGTGGAACAGAATTGCA
 GCATTTTAAACCACTGTTTCAGCTGCTGGAGAAGCAGATACTGTCCCGAGTCCGGAACACAGCTAGCTTT
 AGGAAGACTGCTGAACGCCTGCTGAGATTTTCAGATAAGAGACAGACTGAGGAGGCCATTGACAGGATTT
 TTGCCATATCACAGCAACAGCAGCAGCAAGCAAGTCAAAGAAAAACCGAAGGGCAGGCAACCGCTATAA
 ATTTGTGGATGCTGTCCCTGATATTTTTGCACAGATTGAAGTCAATGAGAAAAAGATTAGACAGAAAGCT
 CAGATTTTGGCACAGAAAGAACTACCATAGATGAAGTGAAGAAATGAAAGACCTTTTAGATTTTGCAG
 ATGTAACATACGAGAAACATAAAATGGGGGCTTGATTAAGGCCGGTTTGGACAGGCACGGATGGTGAC
 AACTACACACAGAGGGCCCCATCACTGTCTGCTTCTATACCAGGTTGTTCTGATTCTGAACATTGCT
 ATTTTCTTTGTCATGTTGGCAATGCAACTGACTTATTTCCAGAGGGCCAGAGCCTACATGGCCAAAGAT
 GTCTTTATGCAGTTCTTCTCATAGATAGCTGTATTTTATTATGGTTGACTCTTCTGTTCCCAATCACA
 GTGT

ACGCGTACGCGGCCGCTCGAG – GFP Tag – GTTTAA

Protein Sequence: >RG218893 representing NM_001080976
Red=Cloning site Green=Tags(s)

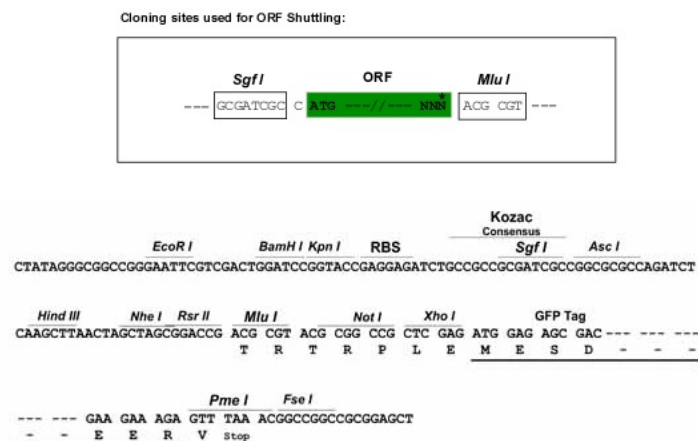
MRTHTRGAPSVFFIYLLCFVSAYITDENPEVMIPFTNANYDSHPMLYFSRAEVAELQLRAASSHEHIAAR
L TEAVHTMLSSPLEYLPWPDPKDY SARWNEIFGNL GALAMFCVLYPENIEARDMAKDYMERMAAQP SWL
VKDAPWDEVPLAHS LVGFATAYDFLYNYLSKTQ QEKFL E VIANASGYMYETS YRRGWGFQYLHNHQTNC
MALLTGSLVLMNQGYLQEAYLWTKQVL TIMEKSLVLLREVTDGSLYEGVAYGSYTTRSLFQYMF LVQRHF
NINHF GHPWLKQHFAFMYRTILPGFQRTVAI ADSNYNWFYGPESQLVFLDKFVMRNGSGNWLADQIRNR
VVEGPGTPSKGQRWCTLHTEFLWYDGSLSVPPPDFGTPTLHYFEDWGVVVTYGSALPAEINRSFLSFKSG
KLGGRAIYDIVHRNKYKDWIKGWRNFNAGHEHPDQNSFTFAPNGVPFITEALYGPKYTFFNNVLMFSPAV
SKSCFSPWVGQVTEDCSSKWSKYKHDLAASCQGRVVAEEKNGVVFIRGEGVGAYNPQLNLKNVQRNLIL
LHPQLLLLVDQIHLGEESPLETAASFFHNVDVPFEETVVDGVHGAFIRQRDGLYKMYWDDTG YSEKATF
ASVTYPRGYPYNGTNYVNVMTMLRSPITRAAYLFIGPSIDVQSFTVHGDSQQLDVF IATSKHAYATYLTW
GEATGQS AFAQVIADRHKILFDRNSAIKSSIVPEVKDYAAIVEQNLQHFKPVFQLLEKQILSRVRNTASF
RKTAERLLRFSDKRQTEEAIDRIFAISQQQQQSKSKNRRAGKRYKFVDAVPDIFAQIEVNEKKIRQKA
QILAQKELPIDEDEEMKDLLDFADVTEYKHKNGGLIKGRFGQARMVTTTHSRAPSLSASYTRLFLILNIA
IFFVMLAMQLTYFQRAQSLHGQRCLYAVLLIDSCILLWLYSSCSQSQC

TRTRPLE - GFP Tag - V

Restriction Sites:

SgfI-MluI

Cloning Scheme:

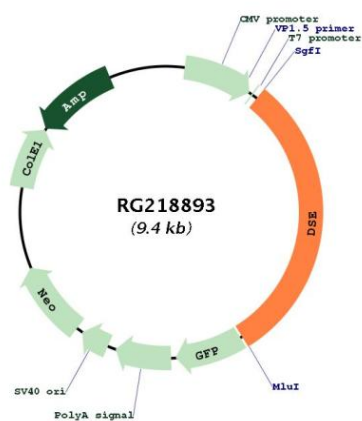


ACCN: NM_001080976

ORF Size: 2874 bp

OTI Disclaimer:	The molecular sequence of this clone aligns with the gene accession number as a point of reference only. However, individual transcript sequences of the same gene can differ through naturally occurring variations (e.g. polymorphisms), each with its own valid existence. This clone is substantially in agreement with the reference, but a complete review of all prevailing variants is recommended prior to use. More info
OTI Annotation:	This clone was engineered to express the complete ORF with an expression tag. Expression varies depending on the nature of the gene.
Components:	The ORF clone is ion-exchange column purified and shipped in a 2D barcoded Matrix tube containing 10ug of transfection-ready, dried plasmid DNA (reconstitute with 100 ul of water).
Reconstitution Method:	<ol style="list-style-type: none"> 1. Centrifuge at 5,000xg for 5min. 2. Carefully open the tube and add 100ul of sterile water to dissolve the DNA. 3. Close the tube and incubate for 10 minutes at room temperature. 4. Briefly vortex the tube and then do a quick spin (less than 5000xg) to concentrate the liquid at the bottom. 5. Store the suspended plasmid at -20°C. The DNA is stable for at least one year from date of shipping when stored at -20°C.
RefSeq:	NM_001080976.2 , NP_001074445.1
RefSeq Size:	4043 bp
RefSeq ORF:	2877 bp
Locus ID:	29940
UniProt ID:	Q9UL01
Cytogenetics:	6q22.1
Protein Families:	Transmembrane
Protein Pathways:	Chondroitin sulfate biosynthesis
Gene Summary:	The protein encoded by this gene is a tumor-rejection antigen. It is localized to the endoplasmic reticulum and functions to convert D-glucuronic acid to L-iduronic acid during the biosynthesis of dermatan sulfate. This antigen possesses tumor epitopes capable of inducing HLA-A24-restricted and tumor-specific cytotoxic T lymphocytes in cancer patients and may be useful for specific immunotherapy. Mutations in this gene cause inmusculocontractural Ehlers-Danlos syndrome. Alternative splicing results in multiple transcript variants. A related pseudogene has been identified on chromosome 9, and a paralogous gene exists on chromosome 18. [provided by RefSeq, Apr 2016]

Product images:



Circular map for RG218893