



GGGCAGGAGCGGCGTGTGCTGGTCAATGCCTCCCTCGGGTGGCCCAACGGCCTGGCCCTGGACCTGCAGG  
 AGGGGAAGCTCTACTGGGGAGACGCCAAGACAGACAAGATCGAGGTGATCAATGTTGATGGGACGAAGAG  
 GCGGACCCCTCTGGAGGACAAGCTCCCGCACATTTTCGGGTTACAGCTGCTGGGGGACTTCATCTACTGG  
 ACTGACTGGCAGCGCCGACGATCGAGCGGGTGCACAAGGTCAAGGCCAGCCGGGACGTCACTATTGACC  
 AGCTGCCCCACCTGATGGGGCTCAAAGCTGTGAATGTGGCCAAGTCTGTCGGAACCAACCCGTGTGCGGA  
 CAGGAACGGGGGGTGCAGCCACCTGTGCTTCTTACACCCACGCAACCCGGTGTGGCTGCCCATCGGC  
 CTGGAGTGTGAGTGACATGAAGACCTGCATCGTGCCTGAGCCCTTCTGGTCTTACCACGAGAGCCG  
 CCATCCACAGGATCTCCCTCGAGACCAATAACAACGACGTGGCCATCCCGCTCACGGGCGTCAAGGAGGC  
 CTCAGCCCTGGACTTTGATGTGTCCAACAACCACATCTACTGGACAGACGTACAGCCTGAAGACCATCAGC  
 CGCGCCTTCATGAACGGGAGCTCGGTGGAGCACGTGGTGGAGTTTGGCCTTGACTACCCCGAGGGCATGG  
 CCGTTGACTGGATGGCAAGAACCTCTACTGGCCGACACTGGGACCAATAGAATCGAAGTGGCGCGGT  
 GGACGGGACGTTCCGGCAAGTCTCGTGTGGAGGACTTGGACAACCCGAGGTGCTGGCCCTGGATCCC  
 ACCAAGGGCTACATCTACTGGACCGAGTGGGGCGGCAAGCCGAGGATCGTGGGGCCTTCATGGACGGGA  
 CCAACTGCATGACGCTGGTGGACAAGTGGGCCGGCCAAAGCCTCACCATTGACTACGCTGACCAGCG  
 CCTCTACTGGACCGACCTGGACACCAACATGATCGAGTCTCAACATGCTGGGTGAGGAGCGGGTCTGT  
 ATTGCCGACGATCTCCCGCACCCGTTCCGTCTGACGACGTACAGCGATTATATCTACTGGACAGACTGGA  
 ATCTGCACAGCATTGAGCGGGCCGACAAGACTAGCGGCCGGAACCCGACCCCTCATCCAGGGCCACCTGGA  
 CTTCTGATGGACATCCTGGTGTCCACTCCTCCCGCCAGGATGGCCTCAATGACTGTATGCACAACAAC  
 GGGCAGTGTGGGACGCTGTGCCTTGCCATCCCGGGCGGCCACCGTGGCGCTGCGCCTCACACTACACCC  
 TGGACCCAGCAGCCGCAACTGCAGCCCGCCACCACCTTCTTGTGTTGAGCCAGAAATCTGCCATCAG  
 TCGGATGATCCCGGACGACCAGCACAGCCCGGATCTATCCTGCCCTGCATGGACTGAGGAACGTCAA  
 GCCATCGACTATGACCCACTGGACAAGTTCATCTACTGGGTGGATGGGCGCCAGAATCAAGCGAGCCA  
 AGGACGACGGGACCCAGCCCTTTGTTTGGACTCTCTGAGCCAAGGCCAAAACCCAGCGGACAGCCCA  
 CGACCTCAGCATCGACATCTACAGCCGGACACTGTTCTGGACGTGCGAGGGCCACCAATACCATCAAGCTC  
 CACAGGCTGAGCGGGGAAGCCATGGGGGTGGTGTGCTGCGTGGGACCGCGCAAGCCAGGGCCATCGTCTG  
 TCAACGCGGAGCGAGGGTACCTGTACTTACCAACATGCAGGACCGGGCAGCCAAGATCGAACGCGCAGC  
 CCTGGACGGCACCGAGCGGAGGTCTCTTACCACCGGCCTCATCCGCCCTGTGGCCCTGGTGGTGGAC  
 AACACTGGGCAAGCTGTTCTGGGTGGACGCGGACCTGAAGCGCATTGAGAGCTGTGACCTGTGAGGGG  
 CCAACCGCCTGACCCTGGAGGACGCCAATCGTGCAGCCTTGGGCTGACCATCCTTGGCAAGCATCT  
 CTACTGGATCGACCGCCAGCAGCAGATGATCGAGCGTGTGGAGAAGACCACCGGGGACAAGCGGACTCGC  
 ATCCAGGGCCGTGTGCCACCTCACTGGCATCCATGCAGTGGAGGAAGTCAGCCTGGAGGAGTTCTCAG  
 CCCACCATGTGCCCGTGAATGGTGGCTGCTCCACATCTGTATTGCCAAGGGTGTGGGACACCACG  
 GTGCTCATGCCAGTCCACCTCGTGTCTCTGCAGAACCTGCTGACCTGTGGAGAGCCGCCACCTGCTCC  
 CCGGACCAGTTTGCATGTGCCACAGGGGAGATCGACTGTATCCCGGGGCTGGCGCTGTGACGGTTTT  
 CCGAGTGCATGACCAGAGCGACGAGGAGGGTGGCCCGTGTGCTCCGCCGCCAGTTCCCTGCGCGCG  
 GGGTCACTGTGTGGACCTGCGCTGCGTGCAGCGGAGGCAGACTGTGAGGACCGTCAAGCAGGAGGTG  
 GACTGTGACGCCATCTGCTGCCAACCAGTCCGGTGTGCGAGCGGCCAGTGTGCTCCTCATCAACAGC  
 AGTGGACTCCTTCCCGACTGTATCGACGGCTCCGACGAGCTCATGTGTGAAATCAACAAGCCGCCCTC  
 AGACGACAGCCCGGCCACAGCAGTGCATCGGGCCCGTCAATTGGCATCATCCTCTCTTCTGTCATG  
 GGTGGTGTCTATTTTGTGTGCCAGCGCGTGGTGTGCCAGCCTATGCGGGGGCCAAACGGGCCCTCCCGC  
 ACGAGTATGTCAGCGGGACCCCGCAGTGGCCCTCAATTTTCATAGCCCGGGCGGTTCCAGCATGGCCC  
 CTTACAGGCATCGCATGCGGAAAGTCCATGATGAGCTCCGTGAGCCTGATGGGGGGCGGGGCGGGGTG  
 CCCCTCTACGACCGGAACCACGTACAGGGGCTCGTCCAGCAGCTGTCCAGCAGCAAGGCCACGCTGT  
 ACCCGCCGATCCTGAACCCGCGCCCTCCCGGCCACGGACCCCTCCCTGTACAACATGGACATGTTCTA  
 CTCTTCAAACATTCCGGCCACTGCGAGACCGTACAGGCCCTACATCATTGAGGAATGGCGCCCCGACG  
 ACGCCCTGCAGCACCACGCTGTGTGACAGCGACTACAGCGCCAGCGCTGGAAGGCCAGCAAGTACTACC  
 TGGATTTGAACTCGGACTCAGACCCCTATCCACCCCAACCCAGCCCCACAGCCAGTACCTGTGCGCGGA  
 GGACAGCTGCCCGCCCTGCCCGCCACCGAGAGGAGCTACTTCCATCTCTTCCCGCCCCCTCGTCCCC  
 TGCACGGACTCATCC

ACGCGTACGCGGCGGCTCGAG - GFP Tag - GTTTAA

Protein Sequence: >RG218864 representing NM\_002335  
 Red=Cloning site Green=Tags(s)

```

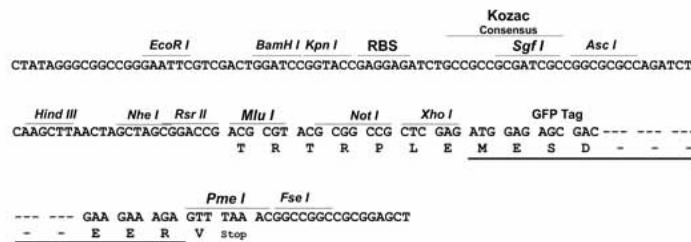
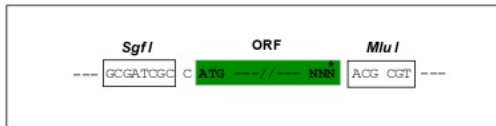
MEAAPPPWPLLLLLLLLLLALCGCPAAAAAPLLL FANRRDVRVLDAGGVKLESTIVVSGLEDAAVDF
QFSKGAVYWTDVSEEAIKQTYLNQTGAAVQNVVISGLVSPDGLACDWVGKLYWTDSETNRIEVANLNGT
SRKVLFWQDLDPRAIALDPAHGYMYWTDWGETPRIERAGMDGSTRKII VSDIYWPNGLTIDLEEKLY
WADAKLSFIHRANLDGSFRQKVVEGSLTHPFALTL SGD TLYWTDWQTRS IHACNKRTGGKRKEILSALYS
PMDIQVLSQERQPFHTRCEEDNGGCSHLCLLSPSEPFYTCACPTGVQLQDNGRTCKAGAEVLLARRT
DLRRISLDTPDFTDIVLQVDDIRHAI AIDYDPLEGYVYWTDDEVRAIRRAYLDGSGAQTLV NTEINDPDG
IAVDWVARNL YWTDGTDRIEVTRLNGTSRKILVSEDLDEPRAIALHPVMGLMYWTDWGENPKIECANLD
GQERRVLVNASLWPNGLALDLQEGKLYWGDAKTDKIEVINVDGTKRRTLLEDKLP HIFGFTLLGDFIYW
TDWQRRSIERVHKVKASRDV I IDQLPDL MGLKAVNVAKVGTNPCADRNGGCSHL CFFTPHATRCGCPIG
LELLSDMKTCIVPEAFLVFTSRAAIHRI SLETNNNDVAIPLTG VKEASALDFDVSNNHIYWTDVSLKTIS
RAF MNGSSVEHVVEFLDYPEGMAVDWMGKNL YWADTGTNRIEVARLDGQFRQVLVWRDLNPRSLALDP
TKGYIYWTEWGGKPRI VRAFMDGTCNMTLV D K VGRANDL TIDYADQRL YWTDLDTNMI ESSNMLGQERVV
IADDLPHPFGLTQYSDIYWTDWNLHSIERADKTSGRNRTL IQGHLDFVMDILV FHSSRQGLNDCMHNN
GQCQQLCLAI PGGHRCGCASHYTLDPSSRNCSPPTTFLFSQKSAI SRMIPDDQHSPDL ILPLHGLRNVK
AIDYDPLDKFIYWVDGRQNIKRAKDDGTQPFVLTSLSQGNPDRQPHDL SIDIYSRTLFWTCEATNTINV
HRLSGEAMGVVLRGDRDKPRAIVVNAERGYLYFTNMQDRAAKIERAALDGTEREV LFTTGLIRPVALVVD
NTLGKLFWVDADLKRIESCDL SGANRL TLEDANIVQPLGLTILGKHL YWIDRQQQMIERVEKTTGDKRTR
IQGRVAHLTGIHAVEEVSL EEFSAHPCARDNGGCSHICIAKGDGTPRCSCPVHLVLLQNL LTCGEPPTCS
PDQFACATGEIDCIPGAWRCDGFPECDQSD EEGCPVCSAAQFPCARGQCVDLRLCDGEADCQDRSDEV
DCDAICLPNQFRCASGQCVLIKQQCSFPDCIDGSELMCEITKPPSDDSPA HSSAIGPVIIGIILSLFVM
GGVYFVCQRVVCQRYAGANGPFPHEYVSGT PHVPLNFIAPGGSQHGPFTGIACGKSMMSSVSLMGGRRGV
PLYDRNHVTGASSSSSSTKATLYPPILNPPSPATDPSLYNMDMFYSSNIPATARPYPYIIRGMAPPT
TPCSTDVCDSDYSASRWKASKYYLDLNSDSDPYPPPTPHSQYLSAEDSCPPSPATERSYFHLFPPPPSP
CTDSS
    
```

TRTRPLE - GFP Tag - V

Restriction Sites: SgfI-MluI

Cloning Scheme:

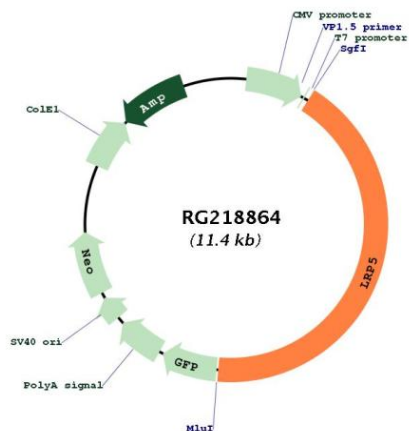
Cloning sites used for ORF Shutting:



ACCN: NM\_002335

<b>ORF Size:</b>	4845 bp
<b>OTI Disclaimer:</b>	The molecular sequence of this clone aligns with the gene accession number as a point of reference only. However, individual transcript sequences of the same gene can differ through naturally occurring variations (e.g. polymorphisms), each with its own valid existence. This clone is substantially in agreement with the reference, but a complete review of all prevailing variants is recommended prior to use. <a href="#">More info</a>
<b>OTI Annotation:</b>	This clone was engineered to express the complete ORF with an expression tag. Expression varies depending on the nature of the gene.
<b>Components:</b>	The ORF clone is ion-exchange column purified and shipped in a 2D barcoded Matrix tube containing 10ug of transfection-ready, dried plasmid DNA (reconstitute with 100 ul of water).
<b>Reconstitution Method:</b>	<ol style="list-style-type: none"><li>1. Centrifuge at 5,000xg for 5min.</li><li>2. Carefully open the tube and add 100ul of sterile water to dissolve the DNA.</li><li>3. Close the tube and incubate for 10 minutes at room temperature.</li><li>4. Briefly vortex the tube and then do a quick spin (less than 5000xg) to concentrate the liquid at the bottom.</li><li>5. Store the suspended plasmid at -20°C. The DNA is stable for at least one year from date of shipping when stored at -20°C.</li></ol>
<b>RefSeq:</b>	<a href="#">NM_002335.1</a> , <a href="#">NP_002326.1</a>
<b>RefSeq Size:</b>	5100 bp
<b>RefSeq ORF:</b>	4848 bp
<b>Locus ID:</b>	4041
<b>UniProt ID:</b>	<a href="#">O75197</a>
<b>Cytogenetics:</b>	11q13.2
<b>Domains:</b>	Idl_recept_b, Idl_recept_a, EGF, EGF
<b>Protein Families:</b>	Druggable Genome, Transmembrane
<b>Protein Pathways:</b>	Wnt signaling pathway
<b>Gene Summary:</b>	This gene encodes a transmembrane low-density lipoprotein receptor that binds and internalizes ligands in the process of receptor-mediated endocytosis. This protein also acts as a co-receptor with Frizzled protein family members for transducing signals by Wnt proteins and was originally cloned on the basis of its association with type 1 diabetes mellitus in humans. This protein plays a key role in skeletal homeostasis and many bone density related diseases are caused by mutations in this gene. Mutations in this gene also cause familial exudative vitreoretinopathy. Alternative splicing results in multiple transcript variants. [provided by RefSeq, May 2014]

Product images:



Circular map for RG218864