

Product datasheet for **RG218849**

EGFL7 (NM_016215) Human Tagged ORF Clone

Product data:

Product Type:	Expression Plasmids
Product Name:	EGFL7 (NM_016215) Human Tagged ORF Clone
Tag:	TurboGFP
Symbol:	EGFL7
Synonyms:	NEU1; VE-STATIN; ZNEU1
Mammalian Cell Selection:	Neomycin
Vector:	pCMV6-AC-GFP (PS100010)
E. coli Selection:	Ampicillin (100 ug/mL)
ORF Nucleotide Sequence:	>RG218849 representing NM_016215 Red=Cloning site Blue=ORF Green=Tags(s)

TTTTGTAATACGACTCACTATAGGGCGGCCGGAATTCGTCGACTGGATCCGGTACCGAGGAGATCTGCC
GCC**CGATCGCC**

ATGAGGGGCTCTCAGGAGGTGCTGCTGATGTGGCTTCTGGTGTGGCAGTGGGCGGCACAGAGCACGCCT
ACCGGCCCGCCGTAGGGTGTGTGCTGTCCGGCTCACGGGACCCTGTCTCCGAGTCGTTCTGCAGCG
TGTGTACCAGCCCTTCTCACCACCTGCGACGGGCACCGGCCTGCAGCACCTACCGAACCATCTATAGG
ACCGCCTACCGCCGACCCCTGGGCTGGCCCTGCCAGGCCTCGTACGCGTGTGCCCGGCTGGAAGA
GGACCAGCGGGCTTCTGGGGCTGTGGAGCAGCAATATGCCAGCCGCCATGCCGGAACGGAGGGAGCTG
TGTCCAGCCTGGCCGCTGCCGCTGCCCTGCAGGATGGCGGGGTGACACTTGCCAGTCAGATGTGGATGAA
TGCAGTGTAGGAGGGGCGGCTGTCCCCAGCGCTGCGTCAACACCGCCGCGAGTTACTGGTGCCAGTGTT
GGGAGGGGCACAGCCTGTCTGCAGACGGTACACTCTGTGTGCCCAAGGGAGGGCCCCCAGGGTGGCCCC
CAACCCGACAGGAGTGGACAGTGAATGAAGGAAGAAGTGCAGAGGCTGCAGTCCAGGGTGGACCTGCTG
GAGGAGAAGTGCAGCTGGTGTGGCCCCACTGCACAGCCTGGCCTCGCAGGCACTGGAGCATGGGCTCC
CGGACCCCGCAGCCTCCTGGTGCACCTTCCAGCAGCTCGGCCGCATCGACTCCCTGAGCGAGCAGAT
TTCTTCTGGAGGAGCAGCTGGGGTCTGCTCCTGCAAGAAAGACTCG

AGCGGACCGACGCGTACGCGCCGCTCGAG - GFP Tag - GTTTAA



[View online »](#)

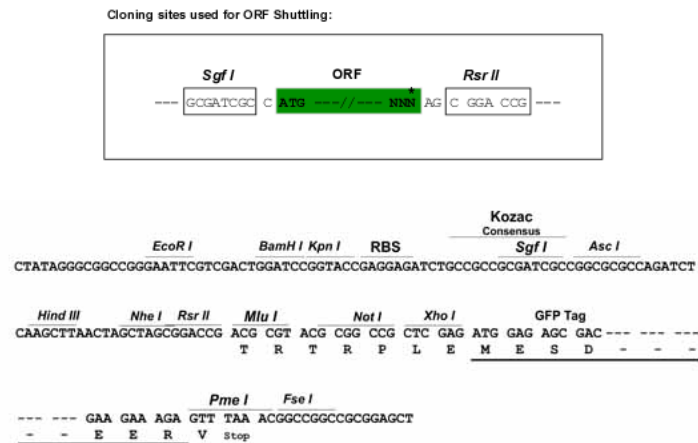
Protein Sequence: >RG218849 representing NM_016215
Red=Cloning site Green=Tags(s)

MRGSQEVLLMLLVAVGGTEHAYRPGRRVCAVRAHGDPVSESFVQRVYQPFLTTCDGHRACSTYRTIYR
 TAYRRSPGLAPARPRYACCPGWKRTSGLPGACGAATICPPCRNGGSCVQGRRCRCPAGWRGDTCSQSDVDE
 CSARRGGCPQRCVNTAGSYWCQCWEHSLSDGTL CVPKGGPPRVAPNPTGVDSAMKEEVQRLQSRVDLL
 EEKQLVLAPLHSLASQALEHGLPDPGSLLVHSFQQLGRIDSLSEQISFLEEQLGSCSCKKDS

SGPTRRRLE - GFP Tag - V

Restriction Sites: SgfI-RsrII

Cloning Scheme:



ACCN: NM_016215

ORF Size: 819 bp

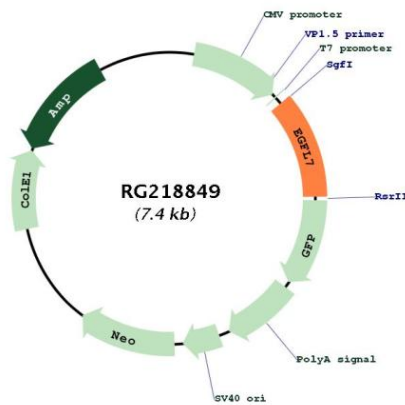
OTI Disclaimer: Due to the inherent nature of this plasmid, standard methods to replicate additional amounts of DNA in E. coli are highly likely to result in mutations and/or rearrangements. Therefore, OriGene does not guarantee the capability to replicate this plasmid DNA. Additional amounts of DNA can be purchased from OriGene with batch-specific, full-sequence verification at a reduced cost. Please contact our customer care team at custsupport@origene.com or by calling 301.340.3188 option 3 for pricing and delivery.

The molecular sequence of this clone aligns with the gene accession number as a point of reference only. However, individual transcript sequences of the same gene can differ through naturally occurring variations (e.g. polymorphisms), each with its own valid existence. This clone is substantially in agreement with the reference, but a complete review of all prevailing variants is recommended prior to use. [More info](#)

OTI Annotation: This clone was engineered to express the complete ORF with an expression tag. Expression varies depending on the nature of the gene.

- Components:** The ORF clone is ion-exchange column purified and shipped in a 2D barcoded Matrix tube containing 10ug of transfection-ready, dried plasmid DNA (reconstitute with 100 ul of water).
- Reconstitution Method:**
1. Centrifuge at 5,000xg for 5min.
 2. Carefully open the tube and add 100ul of sterile water to dissolve the DNA.
 3. Close the tube and incubate for 10 minutes at room temperature.
 4. Briefly vortex the tube and then do a quick spin (less than 5000xg) to concentrate the liquid at the bottom.
 5. Store the suspended plasmid at -20°C. The DNA is stable for at least one year from date of shipping when stored at -20°C.
- RefSeq:** [NM_016215.5](#)
- RefSeq Size:** 1569 bp
- RefSeq ORF:** 822 bp
- Locus ID:** 51162
- UniProt ID:** [Q9UHF1](#)
- Cytogenetics:** 9q34.3
- Domains:** EGF_CA, EGF, EGF
- Protein Families:** Secreted Protein
- Gene Summary:** This gene encodes a secreted endothelial cell protein that contains two epidermal growth factor-like domains. The encoded protein may play a role in regulating vasculogenesis. This protein may be involved in the growth and proliferation of tumor cells. Alternate splicing results in multiple transcript variants. [provided by RefSeq, Feb 2012]

Product images:



Circular map for RG218849