

Product datasheet for **RG218841**

TAZ (NM_000116) Human Tagged ORF Clone

Product data:

Product Type:	Expression Plasmids
Product Name:	TAZ (NM_000116) Human Tagged ORF Clone
Tag:	TurboGFP
Symbol:	TAZ
Synonyms:	BTHS; CMD3A; EFE; EFE2; G4.5; LVNCX; TAZ; Taz1
Mammalian Cell Selection:	Neomycin
Vector:	pCMV6-AC-GFP (PS100010)
E. coli Selection:	Ampicillin (100 ug/mL)
ORF Nucleotide Sequence:	>RG218841 representing NM_000116 Red=Cloning site Blue=ORF Green=Tags(s)

TTTTGTAATACGACTCACTATAGGGCGGCCGGAATTCGTCGACTGGATCCGGTACCGAGGAGATCTGCC
GCC**CGATCGCC**

ATGCCTCTGCACGTGAAGTGGCCGTTCCCGCGGTGCCGCCGCTCACCTGGACCCTGGCCAGCAGCGTCTG
TCATGGGCTTGGTGGGCACCTACAGCTGCTTCTGGACCAAGTACATGAACCACCTGACCGTGCACAACAG
GGAGGTGCTGTACGAGCTCATCGAGAAGCGAGGCCCGCCACGCCCTCATCACCGTGTCCAATCACCAG
TCCTGCATGGACGACCCTCATCTCTGGGGATCCTGAAACTCCGCCACATCTGGAACCTGAAGTTGATGC
GTTGGACCCTGCAGCTGCAGACATCTGCTTACCAAGGAGCTACACTCCCACTTCTTCAGCTTGGGCAA
GTGTGTGCCTGTGTGCCGAGGAGCAGAATTTTTCCAAGCAGAGAATGAGGGGAAAGGTGTTCTAGACACA
GGCAGGCACATGCCAGGTGCTGGAAAAAGAAGAGAGAAAGGAGATGGCGTCTACCAGAAGGGGATGGACT
TCATTTTGGAGAAGCTCAACCATGGGGACTGGGTGCATATCTTCCAGAAGGGAAAGTGAACATGAGTTC
CGAATTCCTGCGTTTCAAGTGGGGAATCGGGCGCCTGATTGCTGAGTGTCTCAACCCCATCATCCTG
CCCCTGTGGCATGTGGAATGAATGACGTCCTTCTAACAGTCCGCCCTACTTCCCCGCTTTGGACAGA
AAACTACTGTGCTGATCGGGAAGCCCTCAGTGCCTGCCTGTACTCGAGCGGCTCCGGGCGGAGAACAA
GTCGGCTGTGGAGATGCGGAAAGCCCTGACGGACTTCATTCAAGAGGAATTCAGCATCTGAAGACTCAG
GCAGAGCAGCTCCACAACCACCTCCAGCCTGGGAGA

ACGCGTACGCGGCCGCTCGAG - GFP Tag - GTTTAA



[View online »](#)

Protein Sequence: >RG218841 representing NM_000116

Red=Cloning site Green=Tags(s)

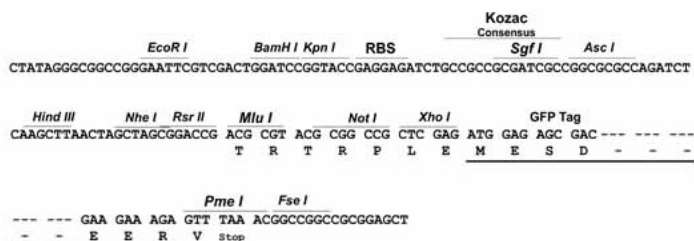
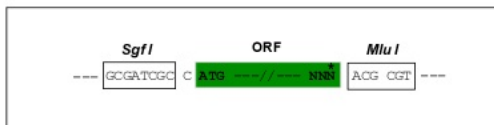
MPLHVKWPFPAVPLTWLASSVVMGLVGTYSFCFWTKYMNHLTVHNREVLVELIEKRGPATPLITVSNHQ
 SCMDPHLWGILKLRHIWNLKLMRWTPAAADICFTKELHSHFFSLGKCVPVCRGAEFFQAENEGKGLVDT
 GRHMPGAGKRREKGDGVYQKGMDFILEKLNHGDDVHIFPEGKVNMSSEFLRFKWIGRLIAECHLNPIIL
 PLWHVGMNDVLPNSPPYFPRFGQKITVLI GKPF SALPVLRLRAENKSAVEMRKAL TDFIQEEFQHLKTQ
 AEQLHNHLQPGR

TRTRPLE - GFP Tag - V

Restriction Sites: SgfI-MluI

Cloning Scheme:

Cloning sites used for ORF Shuttling:



ACCN: NM_000116

ORF Size: 876 bp

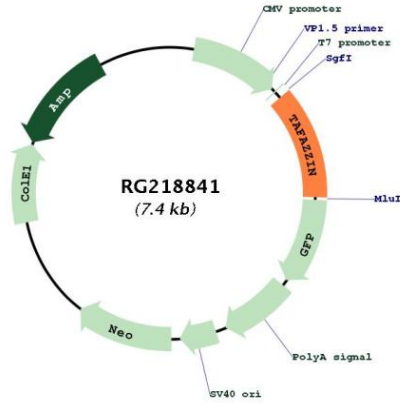
OTI Disclaimer: Due to the inherent nature of this plasmid, standard methods to replicate additional amounts of DNA in E. coli are highly likely to result in mutations and/or rearrangements. Therefore, OriGene does not guarantee the capability to replicate this plasmid DNA. Additional amounts of DNA can be purchased from OriGene with batch-specific, full-sequence verification at a reduced cost. Please contact our customer care team at custsupport@origene.com or by calling 301.340.3188 option 3 for pricing and delivery.

The molecular sequence of this clone aligns with the gene accession number as a point of reference only. However, individual transcript sequences of the same gene can differ through naturally occurring variations (e.g. polymorphisms), each with its own valid existence. This clone is substantially in agreement with the reference, but a complete review of all prevailing variants is recommended prior to use. [More info](#)

OTI Annotation: This clone was engineered to express the complete ORF with an expression tag. Expression varies depending on the nature of the gene.

Components:	The ORF clone is ion-exchange column purified and shipped in a 2D barcoded Matrix tube containing 10ug of transfection-ready, dried plasmid DNA (reconstitute with 100 ul of water).
Reconstitution Method:	<ol style="list-style-type: none">1. Centrifuge at 5,000xg for 5min.2. Carefully open the tube and add 100ul of sterile water to dissolve the DNA.3. Close the tube and incubate for 10 minutes at room temperature.4. Briefly vortex the tube and then do a quick spin (less than 5000xg) to concentrate the liquid at the bottom.5. Store the suspended plasmid at -20°C. The DNA is stable for at least one year from date of shipping when stored at -20°C.
RefSeq:	NM_000116.5
RefSeq Size:	1904 bp
RefSeq ORF:	879 bp
Locus ID:	6901
UniProt ID:	Q16635
Cytogenetics:	Xq28
Domains:	Acyltransferase
Protein Families:	ES Cell Differentiation/IPS, Transmembrane
Gene Summary:	This gene encodes a protein that is expressed at high levels in cardiac and skeletal muscle. Mutations in this gene have been associated with a number of clinical disorders including Barth syndrome, dilated cardiomyopathy (DCM), hypertrophic DCM, endocardial fibroelastosis, and left ventricular noncompaction (LVNC). Multiple transcript variants encoding different isoforms have been described. A long form and a short form of each of these isoforms is produced; the short form lacks a hydrophobic leader sequence and may exist as a cytoplasmic protein rather than being membrane-bound. Other alternatively spliced transcripts have been described but the full-length nature of all these transcripts is not known. [provided by RefSeq, Jul 2008]

Product images:



Circular map for RG218841