

Product datasheet for **RG218836**

TAF1C (NM_005679) Human Tagged ORF Clone

Product data:

Product Type:	Expression Plasmids
Product Name:	TAF1C (NM_005679) Human Tagged ORF Clone
Tag:	TurboGFP
Symbol:	TAF1C
Synonyms:	MGC:39976; SL1; TAFI95; TAFI110
Mammalian Cell Selection:	Neomycin
Vector:	pCMV6-AC-GFP (PS100010)
E. coli Selection:	Ampicillin (100 ug/mL)



[View online »](#)

ORF Nucleotide Sequence:

>RG218836 representing NM_005679
 Red=Cloning site Blue=ORF Green=Tags(s)

TTTTGTAATACGACTCACTATAGGGCGGCCGGAATTCGTCGACTGGATCCGGTACCGAGGAGATCTGCC
 GCC**CGATCGCC**

ATGGACTTCCCCAGCTCCCTCCGCCTGCATTGTTTCTGACCGGCCCCCTTGGTCTGAGCGACGTCCTG
 ACCTCTCTTTCATGTGCAGCTGGCGAGACGCACTGACTCTGCCAGAGGCCAGCCCCAGAACTCAGAGAA
 TGGGGCACTGCATGTGACCAAGGACCTGCTGTGGGAGCCGGCAACCCCTGGGCTCTCCCATGCTGCCT
 CCCCTCATCGATCCCTGGGACCTGGCCTGACTGCCCGGGACCTGCTTTTCCGCGGAGGGTGCCGGTATC
 GGAAGCGGCCCGAGTCGTGCTGGATGTGACTGAGCAGATCAGCCGGTTCCTCTTGGATCATGGAGACGT
 AGCCTTTGCGCCCTGGGAAGCTGATGCTGGAGAATTTCAAGCTGGAGGGAGCGGGGAGCCGCACTAAG
 AAGAAGACAGTGGTCAGTGTGAAGAAGCTGCTCCAGGACCTCGGTGGACACCAGCCCTGGGGGTGCCT
 GGGCTTACCTCAGCAACCGACAGCGCCGCTTCTATCCTCGGGGCCCCATCCTGGGCAGTCGGTGGC
 GAGCCACTTGGCAGAGCTGCTGCACGAGGAGCTGGTGTGCGGTGGGAGCAGCTGCTTCTGGATGAGGCC
 TGCACTGGGGCGCGCTGGCCTGGGTTCCTGGAAGGACACCCAGTTCGGGCAGCTGGTCTACCCCTGCTG
 GAGGCGCCAGGACAGGCTGCATTTCCAAGAGGTGCTTCTGACCCAGGTGACAATCCCCAATTCCTTGG
 GAAACCTGGACGCATCCAGCTCCAGGGACCTGTCCGGCAAGTGGTGCATGCACCGTCCAGGGAGAAAGT
 AAGGCCCTTATATACACTTTCCTCCCTCACTGGCTGACCTGCTACCTGACCCCTGGCCCTTTCATCCCT
 CCTCAGCTCTGCTGGCCGTCCGCTCTGACTACCACTGTGCCGTGTGGAAGTTTGGTAAACAGTGGCAGCC
 AACCTTCTGCAGGCAATGCAGGTGGAGAAAGGGGCCACGGGGATCAGCCTCAGCCCTCACCTGCCCGGG
 GAGCTGGCCATCTGCAGCCGCTCGGAGCCGCTGCCTGTGGAGCCCTGAGGATGGGTGGCGCAATCT
 ACAGGGACCTGAGACCCTCGTGTTCGGGACTCCTCTTCGTGGCGTTGGGCAGACTTCACTGGCACCC
 TCGGGTGTGACCGTGGGTGACCGCACCGGAGTGAAGATGCTGGACACTCAGGGCCCCGCCGGCTGTGGT
 CTGTTGCTTTTTCGTTTGGGGCAGAGGCTTCGTGCCAGAAAGGGGAACGTGTCTGCTTACCCAGTACC
 TGGGGCACTCCAGCCCCAATGCCTCCCCCTACTCTTCTCATCTGCTGTACCCAGTTCTCTCTCTACCT
 AGTGGACGAGCGCCTTCCCCTGGTGCCGATGCTGAAGTGAACCATGGCCTCCCCCCCCGCTCTGCTG
 GCCCGACTGCTGCCTCCGCCCGGCCAGCTGCGTGCAGCCCTGCTCCTCGGAGGCCAGGGTGGGCAGC
 TGCAGTGTGCACTGGCAGGAGAAGGGCGTGGTGGCCCGCTGGCAGGCCCCCCCAGTCTCTTCC
 TTCCAGGATCGACTCCCTCCCTGCATTTCTCTGCTGGAGCCTAAGATCCAGTGGCGGCTGCAGGAGCGC
 CTGAAAGCACCGACCATAGGTCTGGCTGCCGTGCTCCCGCCTTGCCCTCAGCGCCACACCAGGCCTGG
 TGCTTTCCAGCTCTCGCGCGCGGGAGATGTCTTCTACCAGCAGCTCCGCCCCAGGTGGACTCCAGCCT
 CCGCAGAGATGCTGGGCCTCCTGGGCACACCAACCTGACTGCCATGCCCCACAGCTTCTTGACCTCC
 CAGGACACTGCCGGCTGCAGCCAGTGGTGAAGGCCCTGCTAAAAGTGGCCCTGGCTCCTCTGTGTGGA
 CAGCACCCACCTTACCCACCGCCAGATGCTGGGCAGCACAGAGCTGCGGAGGGAGGAAGAGGAAGGGCA
 GCGGCTGGGTGTGCTCCGCAAGGCCATGGCCCGAGGGCAGCTCCTGCTGCAGAGAGACCTGGGCTCCCTC
 CCTGGCGCAGAGCCACCCCTGCACCCGAGTCAAGCCTAGAGGACAAGCTCAGTGAAGCCTGGGGGAAG
 CAGGCGGCCCAAGCGCCGACCCAGCTGTCCAGCAGTTTTTCGCTCAGTGGCCATGTGGATCCCTCAGAG
 GACACCAGCTCCCTCATAGCCCTGAGTGGCCACCTGCTGATGCTCTGCCCTGCCCCACGACCCCGC
 CCTCCCAGGAGTTGACTCCGGATGCATGCGCCAGGGCGTCCCATCAGAGCAGCGGCAGATGCTCCGTGA
 CTACATGGCCAAGCTACCACCCAGAGGGACACCCAGGCTGTGCCACCACACTCCCCACTCCCAGGCC
 TCCAGCGTCCGGGCCACTCGCTCCAGCAGCACACCCGTCCTCTAGCTCTCAGCCCTCCGGAAGA
 AGCCTCGAATGGGCTTC

ACGGTACGCGGCCGCTCGAG - GFP Tag - GTTTAA

Protein Sequence: >RG218836 representing NM_005679
 Red=Cloning site Green=Tags(s)

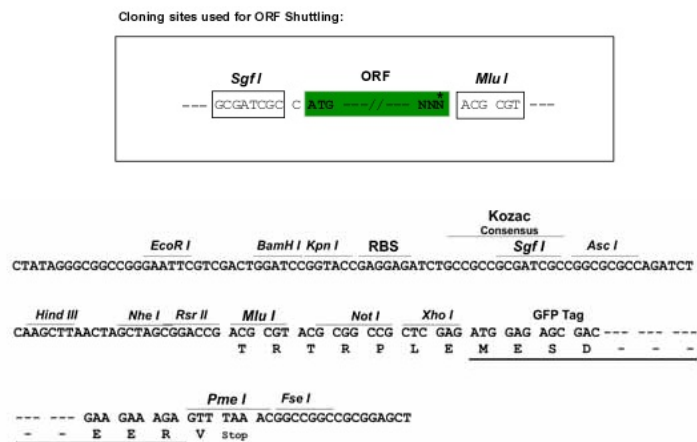
MDFPSSLRPALFLTGPLGLSDVPDLFMCSWRDALTLPEAQPQNSENGALHVTKDLLWEPATPGPLMPLP
 PLIDPWPDPGLTARDLLFRGGCRYRKRPRVLDVTEQISRFLLDHGDVAFAPLGLMLENFKLEGAGSRTK
 KKTVVSVKLLQLDLGGHQPWGPCWAYLSNRQRRFSILGGPILGTSVASHLAELLHEELVLRWEQLLLDEA
 CTGGALAWVPGRTPQFGQLVYPAGGAQDRLHFQEVVLTGPDNPQFLGKPGRIQLQGPVVRQVVTCTVQGES
 KALIYTFLPHWLTCTYLTGPFHPSSALLAVRSDYHCAVWKFQKQWQPTLLQAMQVEKGATGISLSPHLP
 ELAICSRSGAVCLWSPEDGLRQIYRDPETLVFRDSSSWRWADFTAHPRVLTVDRTGVKMLDTQGP
 PGG LLLFRLGAEASCQKGERVLLTQYLGHSSPKCLPPTLHLVCTQFSLYLVDERLPLVPMKWNHGLPSPLLL
 ARLLPPPRPSCVQPLLLGGQGGQLQLHLAGEGASVPRLAGPPQSLPSRIDSLPAFPLEPKIQWRLQER
 LKAPTIGLAADVPPPLPSAPTPGLVLFQLSAAGDVFYQQLRPQVDSLRDAGPPGDTQPDCHAPTASWTS
 QDTAGCSQWLKALLKVPLAPPVWTAFTFTHRQMLGSTELRREEEEGQRLGVLKAMARGQLLLQRDLGSL
 PAAEPPAPESGLEDKLSERLGEAWAGRAAWWERQQGRTSEPGRQTRRPKRRTQLSSFSLSGHVDPSE
 DTSSPHSPEWPPADALPLPPTTPPSQELTPDACAQGVPSQRQMLRDYMAKLPQQRDTPGCATTPPHSQA
 SSVRATRSQQHTPVLSSSQPLRKKPRMGF

TRTRPLE - GFP Tag - V

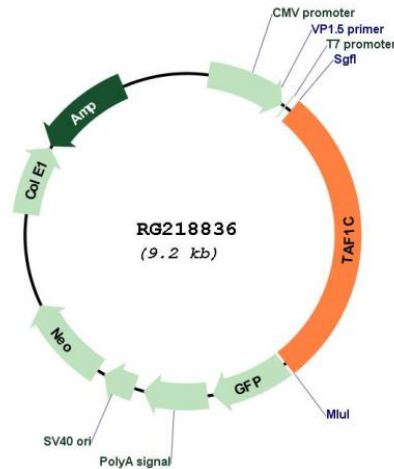
Restriction Sites:

Sgfl-MluI

Cloning Scheme:



Plasmid Map:



ACCN: NM_005679

ORF Size: 2607 bp

OTI Disclaimer: The molecular sequence of this clone aligns with the gene accession number as a point of reference only. However, individual transcript sequences of the same gene can differ through naturally occurring variations (e.g. polymorphisms), each with its own valid existence. This clone is substantially in agreement with the reference, but a complete review of all prevailing variants is recommended prior to use. [More info](#)

OTI Annotation: This clone was engineered to express the complete ORF with an expression tag. Expression varies depending on the nature of the gene.

Components: The ORF clone is ion-exchange column purified and shipped in a 2D barcoded Matrix tube containing 10ug of transfection-ready, dried plasmid DNA (reconstitute with 100 ul of water).

Reconstitution Method:

1. Centrifuge at 5,000xg for 5min.
2. Carefully open the tube and add 100ul of sterile water to dissolve the DNA.
3. Close the tube and incubate for 10 minutes at room temperature.
4. Briefly vortex the tube and then do a quick spin (less than 5000xg) to concentrate the liquid at the bottom.
5. Store the suspended plasmid at -20°C. The DNA is stable for at least one year from date of shipping when stored at -20°C.

RefSeq: [NM_005679.4](#)

RefSeq Size: 3925 bp

RefSeq ORF: 2610 bp

Locus ID: 9013

UniProt ID: [Q15572](#)

Cytogenetics: 16q24.1

Protein Families: Transcription Factors

Gene Summary: Initiation of transcription by RNA polymerase I requires the formation of a complex composed of the TATA-binding protein (TBP) and three TBP-associated factors (TAFs) specific for RNA polymerase I. This complex, known as SL1, binds to the core promoter of ribosomal RNA genes to position the polymerase properly and acts as a channel for regulatory signals. This gene encodes the largest SL1-specific TAF. Multiple alternatively spliced transcript variants encoding different isoforms have been identified. [provided by RefSeq, Jul 2011]