

Product datasheet for **RG218835**

Carboxypeptidase Z (CPZ) (NM_001014447) Human Tagged ORF Clone

Product data:

Product Type:	Expression Plasmids
Product Name:	Carboxypeptidase Z (CPZ) (NM_001014447) Human Tagged ORF Clone
Tag:	TurboGFP
Symbol:	CPZ
Mammalian Cell Selection:	Neomycin
Vector:	pCMV6-AC-GFP (PS100010)
E. coli Selection:	Ampicillin (100 ug/mL)



[View online »](#)

ORF Nucleotide Sequence:

>RG218835 representing NM_001014447
 Red=Cloning site Blue=ORF Green=Tags(s)

TTTTGTAATACGACTCACTATAGGGCGGCCGGGAATTCGTCGACTGGATCCGGTACCGAGGAGATCTGCC
 GCC**CGGATCGCC**

ATGCCGCCCCCGCCGCGCTGCTCCTTACAGTCTGGTCTGCGCCGCTGCCGCGGGGTGCGAGT
 TTGAGCGGAACCCCGCCGGTGAATGCCACAGGCCACCAGCTGCAGACAGCGCCACCTGCGTGGACCTGCA
 GCTCAGGACCTGCAGCGATGCCGCTACAACCACACCACCTTCCCCAACCTGCTTACAGCACCAGTCTGG
 GAGGTGGTGGAGGCCAGCTCCGAGTACATCCTGCTGAGCGTTCTACACCAGCTCCTGGAAGGCCAGTGA
 ACCCGGACCTGCGGCTGCTGGGCTGTGCTGTGCTGGCCCCCGGTGTGAGGGCGGCTGGGTGCGCAGACC
 CTGCCGGCACATCTGCGAGGGCCTGCGGGAGGTCTGCCAGCCCGCCTTCGACGCCATTGACATGGCTGG
 CCCTACTTCTTGACTGCCACCGCTACTTCACGAGAGAGGACGAGGGCTGCTATGACCCGCTGGAGAAGC
 TTCGGGGAGGCCGGAGGCTGACGAGGCACTGCCCTCAGGGCTGCCGCCACCTTCATCCGCTTCAGCCA
 CCACTCCTACGCCAGATGGTGCCTGTGCTGAGGCGGACGGCCTCCCGCTGCGCCACGTGGCCAGGACC
 TACAGCATCGGGCGCAGCTTCGACGGCAGGGAGCTGCTGGTTCATCGAGTTCTCCAGCCGCCCGGCCAGC
 ACGAGCTGATGGAGCCCAGGTGAAGCTCATCGGCAACATTCATGGCAACGAGGTGGCGGGCCGGGAGAT
 GCTCATCTACCTAGCCCAGTACCTGTGCTCTGAGTACCTGCTTGGTAACCCCGCATCCAGCGCCTGCTC
 AACACCACCCGCATCCACCTGCTGCCCTCCATGAACCCTGACGGCTATGAGGTGGCAGCTGCCGAGGGTG
 CCGGCTACAACGGGTGGACGAGCGGGAGGCAGAACCGCGCAGAACCTGGATCTGAACCGAAATTTCCCGGA
 CCTGACGTCAGTACTACCGCTGGCGGAGACCCGCGCGCACGACGACACATCCCATCCCCAG
 CACTACTGGTGGGTAAAGTGGCCCCGAGACAAAGGCAATCATGAAGTGGATGCAGACCATACCCCTTG
 TGCTCTCAGCCAGCCTTCATGGGGCGACCTGGTGGTGTCTACCCCTTCGACTTCTCAAGCACCCCA
 GGAGGAGAAGATGTTTTCTCCACGCCCGACGAGAAGATGTTCAAGCTGCTGTCCAGAGCCTACGCTGAC
 GTCCACCCCATGATGATGGACAGGTGCGGAGAATAGGTGTGGAGGCAATTCCTGAAGAGGGGGAGCATCA
 TCAACGGGGCGGACTGGTACAGCTTCACGGGAGGCATGTCGATTTCAACTACCTGCACACCAACTGCTT
 TGAGATACGGTAGAGCTGGGCTGTGTGAAGTTCACCCCGAGGAGGCCCTGTACACACTCTGCCAGCAC
 AACAGGAGTCACTCCTGAATTCGTGGAGACGGTGCACCGGGCATCAAAGGTGTGGTACAGATAAAT
 TCGGCAAGCCAGTCAAAAACGCCCGGATCTCAGTCAAAGGCATTCGCCACGACATACCACAGCCCCAGA
 TGGTACTACTGGAGACTGCTGCCCCAGGTATCCACATTGTTCATTGCCAAGCCCTGGCTACGCCAAA
 GTCATCAAGAAATCATATCCCGCCCGGATGAAGAGGGCTGGCCGTGTGGACTTCATTCTGCAACCTC
 TGGGGATGGGACCAAGAACTTTATTATGGGCTGCGGAGGACTGGGCCACGACCCGCTGGGAGGTGC
 CAGCTCTTTGGGGAGGCCACGGAGCCCGACCCGCTCCGGGCGCGCAGGACCCCTCGGCCGACGGGAGT
 AAGCCCTGGTGGTGGTCTACTTACATCGCTGAGCACCCACAGGCCACGCTGGCTGCTCAAGTAC

ACGCGTACGCGGGCCGCTCGAG - GFP Tag - GTTTAA

Protein Sequence:

>RG218835 representing NM_001014447
 Red=Cloning site Green=Tags(s)

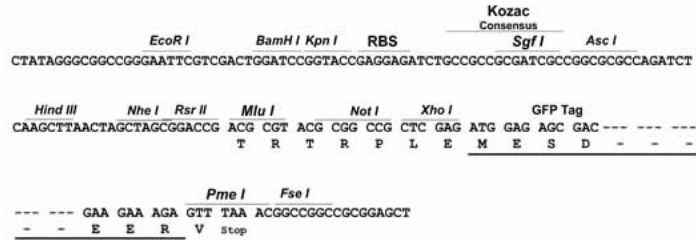
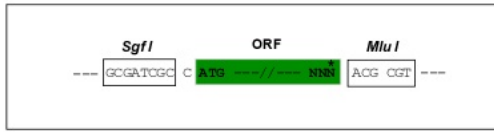
MPPPPPLLLLTVLVVAAARPGEFERNPAGECHRPPAADSATCVDLQLRTCSDAAYNHTTFPPLLQHRSW
 EVVEASSEYILLSVLHQLLEGGQCNPDRLRLGCAVLAPRCEGGWRRPCRHI CEGLREVCQPAFDAIDMAW
 PYFLDCHRYFTREDEGCYDPLEKLRGLEADEALPSGLPPTFIRF SHHSYAQMVRVLRRTASRCAHVART
 YSIGRSFDGRELLVIEFSSRPGQHELMEPEVKLIGNIHGNEVAGREMLIYLAQYLCSEYLLGNPRIQRLL
 NTTRIHLPLSMNPDGYEVAAAEGAGYNGWTSGRQNAQNLDLNRNFPDLTSEYYRLAETRGARSDHIPIQ
 HYWWGKVAPETKAIMKWMQTIPIFVLSASLHGGDLVVSYPDFSKHPQEEKMFSPDPDEKMFKLLSRAYAD
 VHPMMDRSENRCGGNFKRGSIIINGADWYSFTGMSDFNYLHTNCFEITVELGCVKFPPEEALYTLWQH
 NKESLLNFVETVHRGIKGVVTDKFKGPKVNARISVKGIRHDITAPDGDYWRLLPPGIHIVIAQAPGYAK
 YIKKVIIIPARMKRAGRVDFILQPLGMGPKNF IHGLRRTGPHDPLGGASSLGEATEPDPLRARRQPSADGS
 KPWWWSYFTSLSTRPRWLLKY

TRTRPLE - GFP Tag - V

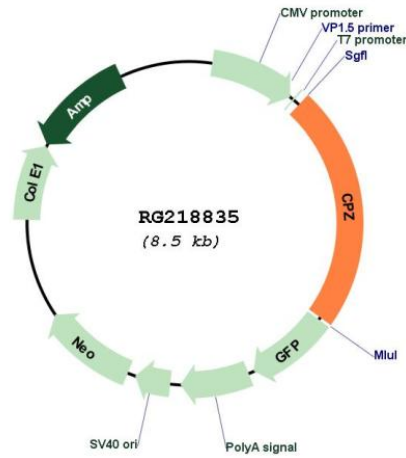
Restriction Sites: SgfI-MluI

Cloning Scheme:

Cloning sites used for ORF Shuttling:



Plasmid Map:



ACCN: NM_001014447

ORF Size: 1956 bp

OTI Disclaimer:	The molecular sequence of this clone aligns with the gene accession number as a point of reference only. However, individual transcript sequences of the same gene can differ through naturally occurring variations (e.g. polymorphisms), each with its own valid existence. This clone is substantially in agreement with the reference, but a complete review of all prevailing variants is recommended prior to use. More info
OTI Annotation:	This clone was engineered to express the complete ORF with an expression tag. Expression varies depending on the nature of the gene.
Components:	The ORF clone is ion-exchange column purified and shipped in a 2D barcoded Matrix tube containing 10ug of transfection-ready, dried plasmid DNA (reconstitute with 100 ul of water).
Reconstitution Method:	<ol style="list-style-type: none">1. Centrifuge at 5,000xg for 5min.2. Carefully open the tube and add 100ul of sterile water to dissolve the DNA.3. Close the tube and incubate for 10 minutes at room temperature.4. Briefly vortex the tube and then do a quick spin (less than 5000xg) to concentrate the liquid at the bottom.5. Store the suspended plasmid at -20°C. The DNA is stable for at least one year from date of shipping when stored at -20°C.
RefSeq:	NM_001014447.2 , NP_001014447.1
RefSeq Size:	2292 bp
RefSeq ORF:	1959 bp
Locus ID:	8532
UniProt ID:	Q66K79
Cytogenetics:	4p16.1
Protein Families:	Druggable Genome, Protease, Secreted Protein
Gene Summary:	This gene encodes a member of the metallo-carboxypeptidase family. This enzyme displays carboxypeptidase activity towards substrates with basic C-terminal residues. It is most active at neutral pH and is inhibited by active site-directed inhibitors of metallo-carboxypeptidases. Alternative splicing in the coding region results in multiple transcript variants encoding different isoforms. [provided by RefSeq, Jul 2008]