

## Product datasheet for **RG218831**

### NBPF11 (NM\_183372) Human Tagged ORF Clone

#### Product data:

Product Type:	Expression Plasmids
Product Name:	NBPF11 (NM_183372) Human Tagged ORF Clone
Tag:	TurboGFP
Symbol:	NBPF11
Synonyms:	NBPF24
Mammalian Cell Selection:	Neomycin
Vector:	pCMV6-AC-GFP (PS100010)
E. coli Selection:	Ampicillin (100 ug/mL)
ORF Nucleotide Sequence:	>RG218831 ORF sequence, <b>codon optimized</b> . Due to the complexity of NM_183372, the ORF clone is codon optimized for mammalian Expression. The nucleotide sequence differs from the reference sequence, yet the amino acid sequence remains identical.

Red=Cloning site Blue=ORF Green=Tags(s)

TTTTGTAATACGACTCACTATAGGGCGGCCGGAATTCGTCGACTGGATCCGGTACCGAGGAGATCTGCC  
GCC**CGATCGCC**

ATGGTAAAGCAAAATAATATCATTCCCGGAGAAACACAAATTCTCCTGAGGTTACAGGCTGGGAATCAA  
AGGTGAATGCTAAAAAGCAGCTGCCAGTGGGCATAAAGTGTGAGCCAATGGATCAGGTGCCCGATTCAAC  
TTCTAGCGCAACCAATGTCTCCATGGTGGTTTCCGCAGGGCCATGGTCTTCAGAAAAAGCCGAGATGAAC  
ATTCTGGAGATCAACGAAAAGCTGCGCCCGCAGCTGGCTGAGAACAAGCAGCAGTTCGGAACTGAAGG  
AACGCTGCTTTCTGACACAGTTGGCGGGTTCCTTGTCTAATAGGCAGAAGAAATACAAATACGAAGAGTG  
CAAGGATCTTATCAAATTCATGCTGCGGAACGAGCGCCAGTTAAGGAAGAGAACTGGCTGAGCAGTTG  
AAACAGGCCGAAGAGCTCCGGCAGTACAAGGTTCTCGTGCACCTCAGGAGCGCAGCTGACCCAGCTGC  
GAGAGAACTTAGAGAAGGTCGCGACGCATCACGATCTTAAATGAACATTTGCAGGCACTGCTGACGCC  
TGACGAACCCGATAAGTCAAGGCCAGGATTTGCAGGAACAGCTTGCCGAGGGCTGCCGACTGGCCCAA  
CACCTTGTACAAAACTGAGCCCGAGAACGACGAAGATGAAGACGAGGATGTCCAGGTGGAAGAAGACG  
AGAAGGCTTGGAACTAGTGCCCTAGGGAAGTCCAAAAGGCCGAAGAGTCTAAGGTACCTGAGGATAG  
CCTGGAAGAGTGCGCTATCACTTGACAGCAACAGCCACGGACCCTGCGATTCAATCCAGCCACATAAAAT  
ATCAAAATCACGTTTCGAGGAAGATAAGGTGAATTCTTCTCTCGTCTGGACCGGAATCTAGTCACGATG  
GCTGTCAGGACGCGCTGAACATTCTTCTGTACCGGGACCGACATCTAGCGCAACCAACGTGTAATGGT  
TGTGTCTGCAGGACCGTTGAGCTCAGAAAAGCAGAGATGAATATCCTGGAGATAAATGAGAAGTTGTGT  
CCTCAACTGGCAGAGAAGAAGCAGCAGTCCGCTCCCTGAAGAAAAGTGTGTTGTGACGCAGGTCGCTT



[View online »](#)

GCTTCCTGGCCAAACAGCAGAATAAATACAAATATGAGGAATGCAAAGATCTCATCAAAGTATGTTGAG  
 GAACGAGCGACAGTTTAAAGGAAGAAAAATTGGCAGAACAGTTGAAGCAGGCAGAGGAACTGCGACAATAT  
 AAGGTCTTGTGCACTCTCAGGAAAGGGAAGTACTCAGCTCAGAGAGAAGTTGAGGGAGGGCCGCGACG  
 CTTCTAGGTCCCTCAATGAACACTTGCAAGCGCTTCTGACACCCGACGAGCCAGATAAATCACAAGGCCA  
 GGACCTGCAGGAACAACCGCGGAGGGCTGCCGCTGGCCAGCACCTGGTACAGAAGCTTTCCCTGAG  
 AACGACAATGACGACGACGAGGACGTTCAAGTAGAAGTAGCTGAGAAGTTTCAAGAAATCAAGCAGCCAA  
 GAGAAATGCAGAAAGCAGAAAGAAAAGGAAGTCCCGAGGACAGCCTCGAAGAATGCGCCATAACATGTTT  
 CAACAGCCATGGCCCTTATGATAGCAATCAGCCACAGAAAGACCAAGATCACATTGAAAGAGGATAAA  
 GTCGACTCCACCTTGATCGGGTCCAGCTCCCATGTGCAATGGGAGGACGCTGTCCATATCATTCCAGAGA  
 ACGAATCAGACGACGAGGAGGAGGAAGAAAAGGACCTGTGAGCCCTCGAAACCTGCAAGAATCTGAAGA  
 AGAAGAGGTGCCCGAGGAGACTGGGATGAGGGCTACTCAACTCTGAGCATTCCCCTGAGAGGCTGGCG  
 AGTTACCAGAGTTATAGTAGCACTTTCCATTCACTGGAAGAGCAGCAGGTCTGTATGGCTGTGGACATAG  
 GTAGGCATAGGTGGGATCAAGTGAAGAAGGAAGACCAAGAGGCCACCGGCCACGCTGTCTCGCGAATT  
 GTTGGACGAAAAGAACCTGAAGTGTGCAGGATAGCCTGGATCGGTGCTATAGCACGCCAAGTGTGTAC  
 CTGGGCTTGACAGATTCTGTCAACCATACAGGTGAGCATTCTAGCTTCTGAGCAGCAGAGAATCGGCC  
 TGGCGGTGACATGGATGAGATTGAGAAGTACCAGGAGGTAGAAGAAGACCAGGATCCGAGCTGTCCAAG  
 GCTGTCCCAGAGCTCCTGGCTGAGAAGGAGCCGAAGTTCTCCAGGACTCTCTCGATCGGTGTTATTCA  
 ACACCAAGCGGTTACCTTGAATTGCCCGACCTGGGACAGCCATACCGGAGCGCGGTGATTCTCTCGAGG  
 AACAGTACTTGGGTCTGGCTCTGGACGTCGATCGAATCAAGAAAGATCAGGAGGAGGAAGAAGATCAGGG  
 ACCTCCATGCCCCAGACTTTCAAGGGAAGTGTGCTGAGGTTGTGCAACCCGAGGTTCTCCAAGATAGCCTC  
 GACGTGATTCAACTGCTGCCAGTTGTGCTCAACAGCTTGACACCTGCTAGCCCTACTGAGGTGCCTTTTA  
 TGCATTGGAGAAAGAATATGTTGGCATTCTCCTTACATGGGAGAAGCTTAAACGGCGCGCCGCGGACG  
 CAAGGAAGGAGAGGAAGATCAGAGAAGGAAGAGGAGGGGGAGGAGAAAAGGCCAAGAAAATAAAGACA  
 CATCACGCTCTGGAAGTGCCGCTGT

ACGCGTACGCGGCCGCTCGAG - GFP Tag - GTTTAA

**Protein Sequence:**

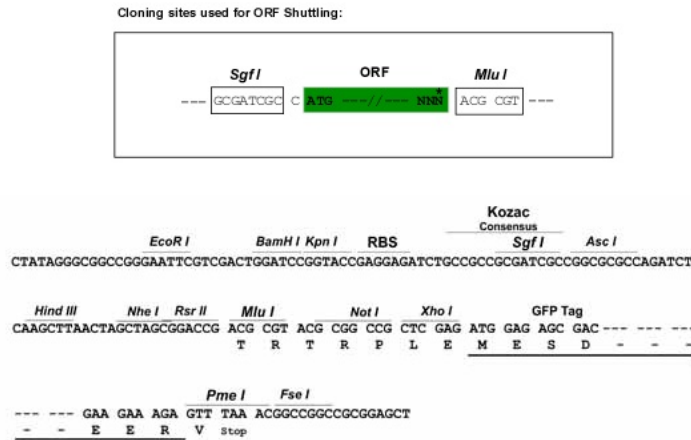
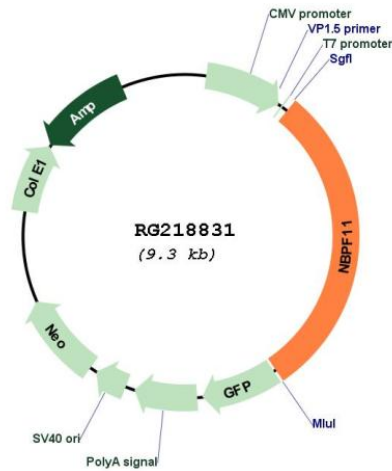
>RG218831 representing NM\_183372  
 Red=Cloning site Green=Tags(s)

MVKQNNIIPGETQILLRFTGWESKVNAAKQLPVGIKCEPMDQVPDSTSSATNVSMVVSAGPWSSEKAEMN  
 ILEINEKLRPQLAENKQQFRNLKERCFLTQLAGFLANRQKYYEEDKDLIKFMLRNERQFKEEKLAEQL  
 KQAEELRQYKVLVHSQERELTQLREKLREGRDASRSLNEHLQALLTPDEPKSQGQDLQEQLAEGCRLAQ  
 HLVQKLSPENDEDEDEDVQVEDEKVLLESSAPREVQKAEESKVPEDSLEECAITCSNSHGPCDSIQPHKN  
 IKITFEEDKVNSSLVVDRESSHDGCQDALNILPVPGPTSSATNVSMVVSAGPLSSEKAEMNILEINEKLC  
 PQLAEKKQQFRSLKEKCFVTQVACFLAKQNKYYEEDKDLIKSMLRNERQFKEEKLAEQLKQAEELRQY  
 KVLVHSQERELTQLREKLREGRDASRSLNEHLQALLTPDEPKSQGQDLQEQLAEGCRLAQHLVQKLSPE  
 NDNDDEDVQVEVAEKVQKSSSPREMQAEEKEVPEDSLEECAITCSNSHGPYDSNQPHRKTITFEEDK  
 VDSTLIGSSSHVEWEDAVHIIPENESDDEEEEEKGPVSPRNLQSEEEVQPESWDEGYSTLSIPPERLA  
 SYQSYSSTFHSLQVCMVAVDIGRHRWDQYKEDQEATGPRLSRELLDEKEPEVLQDSLDRCYSTPSVY  
 LGLTDSQPYRSIFYVLEQQRIGLAVDMEIEKYQEVEEDQDPSCPRLSRELLAEKEPEVLQDSLDRCY  
 TPSGYLELPDLGQPYRSAYVLSLEEQYLGLALDVRIRKDKQEEEDQGPCCPRLSRELLVEVEPEVLQDSL  
 DVIQLLPVNLSTPASPTVEPFMHRKNMLAFLLTWEKLRGRGRKEGEEDQRRKEEGEEKKGGKIKT  
 HHAPGSAAC

TRTRPLE - GFP Tag - V

**Restriction Sites:**

Sgfl-MluI

**Cloning Scheme:**

**Plasmid Map:**


**ACCN:** NM\_183372

**ORF Size:** 2757 bp

**OTI Disclaimer:** The molecular sequence of this clone aligns with the gene accession number as a point of reference only. However, individual transcript sequences of the same gene can differ through naturally occurring variations (e.g. polymorphisms), each with its own valid existence. This clone is substantially in agreement with the reference, but a complete review of all prevailing variants is recommended prior to use. [More info](#)

<b>OTI Annotation:</b>	This clone was engineered to express the complete ORF with an expression tag. Expression varies depending on the nature of the gene.
<b>Components:</b>	The ORF clone is ion-exchange column purified and shipped in a 2D barcoded Matrix tube containing 10ug of transfection-ready, dried plasmid DNA (reconstitute with 100 ul of water).
<b>Reconstitution Method:</b>	<ol style="list-style-type: none"><li>1. Centrifuge at 5,000xg for 5min.</li><li>2. Carefully open the tube and add 100ul of sterile water to dissolve the DNA.</li><li>3. Close the tube and incubate for 10 minutes at room temperature.</li><li>4. Briefly vortex the tube and then do a quick spin (less than 5000xg) to concentrate the liquid at the bottom.</li><li>5. Store the suspended plasmid at -20°C. The DNA is stable for at least one year from date of shipping when stored at -20°C.</li></ol>
<b>RefSeq:</b>	<a href="#">NM_183372.4</a> , <a href="#">NP_899228.4</a>
<b>RefSeq Size:</b>	5483 bp
<b>RefSeq ORF:</b>	2598 bp
<b>Locus ID:</b>	200030
<b>UniProt ID:</b>	<a href="#">Q86T75</a>
<b>Cytogenetics:</b>	1q21.2