

Product datasheet for **RG218809**

SNF5 (SMARCB1) (NM_003073) Human Tagged ORF Clone

Product data:

Product Type:	Expression Plasmids
Product Name:	SNF5 (SMARCB1) (NM_003073) Human Tagged ORF Clone
Tag:	TurboGFP
Symbol:	SNF5
Synonyms:	BAF47; CSS3; hSNFS; INI1; MRD15; PPP1R144; RDT; RTPS1; Sfh1p; SNF5; SNF5L1; Snr1; SWNTS1
Mammalian Cell Selection:	Neomycin
Vector:	pCMV6-AC-GFP (PS100010)
E. coli Selection:	Ampicillin (100 ug/mL)
ORF Nucleotide Sequence:	>RG218809 representing NM_003073 Red=Cloning site Blue=ORF Green=Tags(s)

TTTTGTAATACGACTCACTATAGGGCGGCCGGAATTCGTCGACTGGATCCGGTACCGAGGAGATCTGCC
GCC**CGATCGCC**

ATGATGATGATGGCGCTGAGCAAGACCTTCGGGCAGAAGCCCGTGAAGTCCAGCTGGAGGACGACGGCG
AGTTCTACATGATCGGCTCCGAGGTGGGAACTACCTCCGTATGTTCCGAGGTTCTCTGTACAAGAGATA
CCCCTCACTCTGGAGGCGACTAGCCACTGTGGAAGAGAGGAAGAAAATAGTTGCATCGTCACATGGTAAA
AAAACAAAACCTAACACTAAGGATCACGGATACACGACTCTAGCCACCAGTGTGACCCTGTTAAAAGCCT
CGAAGTGAAGAGATTCTGGATGGCAACGATGAGAAGTACAAGGCTGTGTCCATCAGCACAGAGCCCC
CACCTACCTCAGGAACAGAAGGCCAAGAGGAACAGCCAGTGGGTACCCACCCTGCCAACAGCTCCCAC
CACTTAGATGCCGTGCCATGCTCCACAACCATCAACAGGAACCGCATGGGCCGAGACAAGAAGAGAACCT
TCCCCCTTGCTTGATGACCATGACCCAGCTGTGATCCATGAGAACGCATCTCAGCCCCAGGTGCTGGT
CCCCATCCGGCTGGACATGGAGATCGATGGGCAGAAGCTGCGAGACGCCTTACCTGGAACATGAATGAG
AAGTTGATGACGCCTGAGATGTTTTAGAAAATCCTCTGTGACGATCTGGATTTGAACCCGCTGACGTTTG
TGCCAGCCATCGCCTCTGCCATCAGACAGCAGATCGAGTCCACCCACGGACAGCATCTGGAGGACCA
GTCAGACCAGCGCGTCATCATCAAGCTGAACATCCATGTGGGAAACATTTCCCTGGTGGACAGTTTGAG
TGGGACATGTGAGAGAAGGAGAAGTCCACAGAGAAGTTGCCCTGAAGCTGTGCTCGGAGCTGGGGTTGG
GCGGGGAGTTTGTACCACCATCGCATAACGATCCGGGGACAGCTGAGCTGGCATCAGAAGACCTACGC
CTTCAGCGAGAACCCTCTGCCACAGTGGAGATTGCCATCCGGAACACGGGCGATGCGGACAGTGGTGC
CCACTGCTGGAGACTCTGACAGACGCTGAGATGGAGAAGAAGATCCGCGACACAGGACAGGAACACGAGGC
GGATGAGGCGTCTTGCCAACACGGCCCCGGCCTGG

ACGCGTACGCGGCCGCTCGAG - GFP Tag - GTTTAA



[View online >](#)

Protein Sequence: >RG218809 representing NM_003073
 Red=Cloning site Green=Tags(s)

```

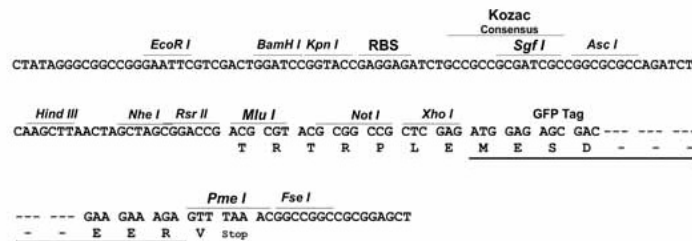
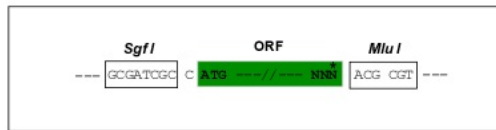
MMMALSKTFGQKPVKFQLEDDGEFYMIGSEVGNLRFMRGSLYKRYPSLWRRLATVEERKKIVASSHGK
KTKPNTKDHGYTTLATSVTLKASEVEEILDGNDEKYKAVSISTEPPTYLREQKAKRNSQWVPTLPNSSH
HLDVAVPCSTTINRNRMRGRDKKRTFPLCFDDHDPVAVIHENASQPEVLVPIRLDMEIDGQKLRDAFTWNMNE
KLMTPEMFSEILCDDLNLNPLTFVPAIASAIRQQIESYPTDSILEDDQSDQRVVIKLNHVGNIISLVDQFE
WDMSEKENSPEKFALKLCELGLGGEFVTTIAYSIRGQLSWHQKTYAFSENPLPTVEIAIRNTGDADQWC
PLLETLTDAEMEKKIRDQRNTRMRRLANTAPAW
  
```

TRTRPLE - GFP Tag - V

Restriction Sites: SgfI-MluI

Cloning Scheme:

Cloning sites used for ORF Shutting:



ACCN: NM_003073

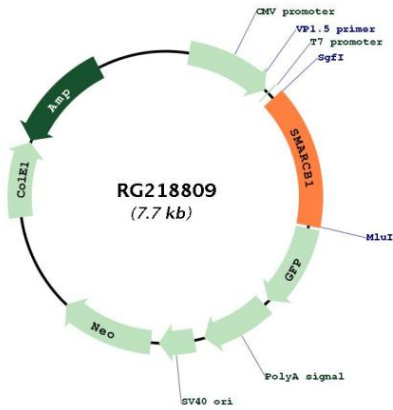
ORF Size: 1155 bp

OTI Disclaimer: Due to the inherent nature of this plasmid, standard methods to replicate additional amounts of DNA in E. coli are highly likely to result in mutations and/or rearrangements. Therefore, OriGene does not guarantee the capability to replicate this plasmid DNA. Additional amounts of DNA can be purchased from OriGene with batch-specific, full-sequence verification at a reduced cost. Please contact our customer care team at custsupport@origene.com or by calling 301.340.3188 option 3 for pricing and delivery.

The molecular sequence of this clone aligns with the gene accession number as a point of reference only. However, individual transcript sequences of the same gene can differ through naturally occurring variations (e.g. polymorphisms), each with its own valid existence. This clone is substantially in agreement with the reference, but a complete review of all prevailing variants is recommended prior to use. [More info](#)

OTI Annotation:	This clone was engineered to express the complete ORF with an expression tag. Expression varies depending on the nature of the gene.
Components:	The ORF clone is ion-exchange column purified and shipped in a 2D barcoded Matrix tube containing 10ug of transfection-ready, dried plasmid DNA (reconstitute with 100 ul of water).
Reconstitution Method:	<ol style="list-style-type: none">1. Centrifuge at 5,000xg for 5min.2. Carefully open the tube and add 100ul of sterile water to dissolve the DNA.3. Close the tube and incubate for 10 minutes at room temperature.4. Briefly vortex the tube and then do a quick spin (less than 5000xg) to concentrate the liquid at the bottom.5. Store the suspended plasmid at -20°C. The DNA is stable for at least one year from date of shipping when stored at -20°C.
RefSeq:	NM_003073.5
RefSeq Size:	1717 bp
RefSeq ORF:	1158 bp
Locus ID:	6598
UniProt ID:	Q12824
Cytogenetics:	22q11
Domains:	SNF5
Protein Families:	Transcription Factors
Gene Summary:	The protein encoded by this gene is part of a complex that relieves repressive chromatin structures, allowing the transcriptional machinery to access its targets more effectively. The encoded nuclear protein may also bind to and enhance the DNA joining activity of HIV-1 integrase. This gene has been found to be a tumor suppressor, and mutations in it have been associated with malignant rhabdoid tumors. Alternatively spliced transcript variants have been found for this gene. [provided by RefSeq, Dec 2015]

Product images:



Circular map for RG218809