

Product datasheet for **RG218806**

BCL9L (NM_182557) Human Tagged ORF Clone

Product data:

Product Type: Expression Plasmids
Product Name: BCL9L (NM_182557) Human Tagged ORF Clone
Tag: TurboGFP
Symbol: BCL9L
Synonyms: B9L; BCL9-2; DLNB11
Mammalian Cell Selection: Neomycin
Vector: pCMV6-AC-GFP (PS100010)
E. coli Selection: Ampicillin (100 ug/mL)
ORF Nucleotide Sequence: >RG218806 representing NM_182557
 Red=Cloning site Blue=ORF Green=Tags(s)

TTTTGTAATACGACTCACTATAGGGCGGCCGGAATTCGTCGACTGGATCCGGTACCGAGGAGATCTGCC
 GCC**CGATCGCC**

ATGAGGATCCTGGCTAACAAAGACAAGGTTACCCACCCAGGAGGAGAGAAGCTCCAGGGAGCCCGCCG
 TGTCCTCCCGCGGTATTGCCCTGCCCCAGCAAGCAATGCACCCAGAAAAATAATTGACCAATCA
 TGGCAAGACAGGGAATGGCGGGCCCAATCTCAGCACCAGAATGTGAACCAAGGACCCACCTGCAACGTG
 GGCTCGAAGGGCGTGGGGCGGGAAACCATGGGCGCAAGGCAACAGATCTCGCCTAGCAACTCAAGTC
 TGAAGAACCCCGAGCAGGGGTGCCCTTTCAGCTCGCTCAAGGCAAGGTGAAGAGGGACCGGAGTGT
 GTCTGTGGACTCTGGAGAGCAGCGAGAGGCTGGGACCCATCCCTGGATTAGAGGCCAAAGAGGTGGCG
 CCGCGGAGTAAGCGGCGCTGTGTCTGGAGCGGAAGCAGCCGTACAGTGGGGACGAATGGTGTCTGGAC
 CGGACAGTGAGGAGGACGACAAGCCATTGGGGCCACCCACAATTGTAATGTAGCAGACCCAGCCATGGC
 GGCCCCACAGTGGGTCCCGGCCAAACCACCAACTGCCCTCAGCGAGAGCAGCGTGCCAGGCGCCCCG
 CACGGCCCTCCTCCTGGCCTTCGGCCTGATGCCCTGGGGCGGGGGCGGGGGCGGGGGCGTCCCCGGAA
 AGCCTCCCTCGCAGTTCGTATATGTCTTACCACCCACCTGGCCAACACGGCTGCAGAGGCGAGTGTGCA
 GGGCGGGCCGACTCCATCCTCGCTACCACAGCAGAACGTGCCCGGGCAAGCTTGACCAGGCCCT
 AAAGTGCCCCCACCAGAACCGTACCCCTGAGCAGCGCTCAGCAGGACCCCGCAGTCCCAGCCAC
 CTCACACTGCCCGCCGCCACCCCGGCCCTGGCAGTGCCCGCCTGCTCTGCCCCAGAGGGGCTCC
 TGAGGACAGCAGTCAGGACCTGGCCCCAACTCGGTGGGAGCTGCCAGCAGAGTGGTGGGACTGGGGC
 ACCCACCTAACACCCGACGGCTACCACCGCCAACAACCCTCTGCCTCTGGAGGAGACCCAGCAGTG
 CCCCCGGCCCTGCCCTGCTGGGGAGGACCGCCCTGGAAATGGGCAGCGCAGCCTGGTGGGCTCAGA
 GGGCTTGTCAAAGAGCAGCTGGAGCATCGGGAACGGTCCCTCCAGACGCTGCGAGACATTGAGCGACTG
 CTGCTCCGAGCGGAGAGACTGAGCCCTCCTCAAGGGGCCCCAGGAGGAGCGGGTGGGGGGGCCAC
 CAGCACAAGCCCCCTCCCCCAGCAGCCACCCAGGCCCTCCAGCGGGCTGAAGAAATATGAGGA
 ACCCTTGAGTCCATGATTTACAGACACAGAGCTAGGGGGCCCCCGTGGAGCATGAAGTGCCTGG



[View online »](#)

CACCCCCGGTGGGACATGGGCGAGCAGATGAACATGATGATACAGAGGCTGGGCCAGGACAGCCTCA
 CGCCTGAGCAGGTGGCCTGGCGCAAGCTGCAGGAGGAGTACTACGAAGAGAAACGGCGAAAGAGGAACA
 GATTGGGCTGCATGGGAGCCGTCTCTGCAGGACATGATGGGCATGGGGGCATGATGGTGGGGGGCCC
 CCGCCTCCTTACCACAGCAAGCCTGGGGATCAGTGGCCACCTGGAATGGGTGCGCAGCTGCGGGGGCCCA
 TGGATGTTCAAGATCCCATGCAGCTCCGGGGCGGACCTCCCTTTCCTGGGCCCGTTTCCAGGCAACCA
 GATAACAACGGGTGCCTGGGTTTGGGGCATGCAGAGTATGCCCATGGAGGTGCCCATGAATGCCATGCAG
 AGGCCCTGAGACCAGGCATGGGCTGGACCGAAGACTTGGCCCTATGGGGGGACCCAGCAATTTTGCCC
 AGAACACCATGCCCTACCCAGGTGGGCGAGGTGAGGCGGAGCGATTGACTCCCCGGTCCGTGAGGA
 GCTGCTGCGGCACCAGCTGCTGGAGAAGCGGTGCGATGGGCATGCAGCGCCCCCTGGGCATGGCAGGCAGT
 GGCATGGGACAGAGCATGGAGATGGAGCGGATGATGCAGGCGCACCGACAGATGGATCCTGCCATGTTTC
 CCGGGCAGATGGCTGGTGGTGGGGCCTGGCGGGCACTCCATGGGCATGGAGTTTGGTGGAGGCCGGGG
 CCTCCTGAGCCCTCCATGGGGCAGTCTGGGCTGAGGGAGGTGGACCCACCCATGGGGCCAGGCAACCTC
 AACATGAACATGAATGTCAACATGAACATGAACATGAACCTGAACGTGCAGATGACCCCGCAGCAGCAGA
 TGCTGATGTCGAGAAGATGCGGGGCCCTGGGGACTTGATGGGGCCCAGGGCCTCAGTCTGAGGAGAT
 GGCCCGGTTTCGGGCCAGAACAGCAGTGGCGTATGGGCGGCCCGAGAAGATGCTGATGCCTTACAG
 TTTCCCAACCAGGGCCAGCAGGGATTCTCTGGAGGCCAGGGACCTACCAAGCCATGTCAGGACATGG
 GCAATACCAAGACATGTTGAGCCCTGATCAGAGCTCAATGCCCATGAGCAACGTGGGCACCCACCGGCT
 CAGCCACATGCCTCTGCCCTCGCTCCATCTCCTGGGACCGTGCATTAGCCCAAACCGGGGGCTA
 GGCAGGCGGCCTTCGGACCTCACCATCAGTATTAATCAGATGGGCTCACCGGGCATGGGGCACTTGAAGT
 CGCCACCCCTTAGCCAGGTGCACTACCCCTGGTCACTCGCCCTCTGCCAACCTCAAGTACCCAGAGC
 TCCCTCACAGATGGTGCCTTGCCTTCTGCAACCCGCCAGGACCTCTCAAGTCGCCCCAGGTCTCGGC
 TCCTCCCTCAGTGTCCGTTACCCACTGGCTCGCCAGCAGGCTCAAGTCTCCTTCCATGGCGGTGCCTT
 CTCCAGGCTGGTTGCCACCTAAGACGGCCATGCCAGCCCGGGGGTCTCCAGAACAAGCAGCCGCC
 TCTCAACATGAACCTTCCACCACCTGAGCAACATGGAACAGGGTACCCTCCCGCTAGCGGCCCCCGG
 AGCAGTCTCAGCACCTCCCGCAACCTCCAGCGGCCTCATGAACCCAGCCTACCATTCACTTCT
 CCCCAGACCCACACCTTCCAGAACCCTGTCACTGATGATGACCCAGATGTCCAAGTACGCCATGCC
 CAGCTCCACCCGCTCTACCACAATGCCATCAAGACCATCGCCACCTCAGACGACGAGTCTGCCCGAC
 CGGCCCTGTGCCCCCCCACCACCACCGCAGGGCTCCGGGCCAGGGATCAGCAACAGCCAGCCAGCC
 AGATGCACCTGAACCTCAGCCGCTGCCAGAGCCCTATGGGCATGAACCTGCCAGGCCAGCAGCCCTGTC
 CCATGAGCCCCCGCCATGCTGCCCTCCCCACCCCTCTGGGCTCCAACATTCAGTGCATCCCAAC
 GCACAGGGGACAGGGGGCCCCCTCAAACCTCCATGATGATGGCCCCAGGGGGCCCCGACTCCCTGAATG
 CCCCCTGTGGCCAGTGCCAGCTCCTCCAGATGATGCCCTTCCCCCTCGGCTGCAGCAGCCCATGG
 TGCCATGGCCCCACTGGGGTGGGGCGGGGGCCTGGCCTGCAGCAGCACTACCCGTCAGGCATGGCC
 CTGCCTCCCGAGGACCTGCCAACCAGCCGCCAGGCCCATGCCTCCCCAGCAGCACCTGATGGGCAAG
 CCATGGCTGGGCGCATGGGCGACGCATACCCACCGGGTGTGCTCCCTGGGGTGGCATCAGTGTGAACGA
 CCCCAGCTGAGCGAGGTGATCCGGCCACCCCAACGGGGATCCCCGAGTTGACTTGTGAGGATCATC
 CCCTCTGAGAAGCCAAGCAGCACCTCCAGTACTTCCCAAGAGCGAGAACCAGCCCCCAAGGCTCAGC
 CCCCTAATCTGCATCTCATGAACCTGCAGAACATGATGGCGGAGCAGACTCCCTCTGGCCTCCCAACT
 CCCAGGCCAGAGGGCGTCCAGCGGGGGCTCAACATGTCCATGTGCCACCCCGGACAGATGTCTTGCTG
 GGCAGGACAGGCGTCCCCCACAGCAGGGGATGGTGCCCATGGCCTGCACCAGGGGTGATGTCCCTC
 CACAAGGCTCATGACCCAGCAGAATTTATGCTGATGAAGCAGCGGGCGTGGGGGGCAGGTTCTACAG
 CCAGCCGCCACATGCTCTCCCCGAGGGCTCCCTCATGGCCCCCGCCCCAGCAGAACCTCATGGTG
 TCCCACCCCTTCGGCAGCGCAGTGTGTCCCTGGACAGCCAGATGGGCTACCTCCCGGCACCAGGCGGCA
 TGGCAACCTGCCCTC

ACGCGTACGCGGCCGCTCGAG – GFP Tag – GTTTAA

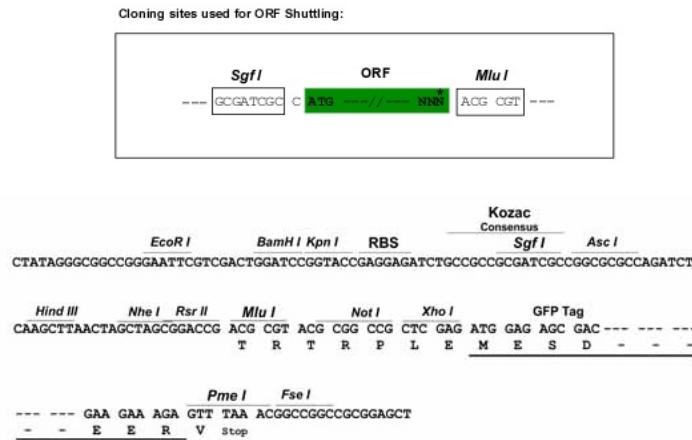
Protein Sequence: >RG218806 representing NM_182557
 Red=Cloning site Green=Tags(s)

MRILANKTRLPHRRREAPGSPPLSPRGHCPPAPAKPMHPENKLTNHGKTGNGGAQSQHQNVNQGPCTCNV
 GSKGVGAGNHGAKANQISPSNSSLKNPQAGVPPFSSSLKGVKRDERSVSDSGEQREAGTPSLDSEAKEVA
 PRSKRRCVLERKQPYSGDEWCSGPDSEEDDKPIGATHNCNVADPAMAAPQLGPGQTTQLPLSESSVPGAP
 HGPPPGLRPDAPGGGGGGGGVPGKPPSQFYVFTTHLANTAEEAVLQGRADSILAYHQNVPRAKLDQAP
 KVPPTPEPLPLSTPSAGTPQSQPPPLPPPPPPAPGSAPPALPPEGPPEDSSQDLAPNSVGAASSTGGGTGG
 THPNTPTATTANNPLPPGGDPSSAPGALLGEAAAPGNGQRSLVGSEGLSKEQLEHRERSLQTLRDIERL
 LLRSGETEPFLKPPGGAGEGGPPAQAPPPQPPPTAPPSGLKKYEEPLQSMISQTSLSLGGPPEHEVPG
 HPPGGDMGQMMMIQRLQDQSLTPEQVAWRKLQEEYEEKRRKEEQIGLHGSRPLQDMMGMGMMVVRGP
 PPPYHSGPDQWPPGMGAQLRGPMDVQDPMQLRGGPPFPGRFPGNQIQRVPGFGGMQSMMPMEVPMNAMQ
 RPVVRPGMWTEDELPPMGPSNF AQNTMPYPGGQGEAERFMTPRVREELLRHQLLEKRSMMQRPPLGMAGS
 GMGQSMEMERMMQAHQMDPAMFPGQ MAGGELAGTPMGMEFGGGRLLSPPMGQSGLEVDPPMPGPNL
 NMNMNVNMNMNMLNVQMT PQQMLMSQKMRGPGDLMGPQGLSPEEMARVRAQNSSGVMGGPQKMLMPSQ
 FPNQGGQGFSGGGQPYQAMSQDMGNTQDMFSPDQSSMPMSNVGTRLSHMLPPASNPPTVHSAPNRGL
 GRRPSDLTISINQMGSPGMHLKSPTLSQVHSPLVTSPSANLKSQTPSQMVPLPSANPPGPKSPQVLG
 SSLSVRSPTGSPSRLKSPSMAVPSPGWVASPKTAMPSPGVSQNKQPPLNMNSSTL SNMEQGLTLPSPGR
 SSSSAPPANPPSGLMNP SLPFTSSPDTPSQNPLSLMMTQMSKYAMPSSSTPL YHNAIKTIATSDELLPD
 RPLLPPPPPPQSGSGPISNSQPSQMHLSAAAQSPMGMLPGQQPLSHEPPA MLPSPTPLG SNIPLHPN
 AQGTGGPPQNSMMAPGGPDSL NACPVPSSSQMMPFPRLQQPHGAMAPTGGGGGGGLQQHYPSGMA
 LPPEDLNQPPGMPMPQHLMGKAMAGRMGDAYPPGVLPGVASV LNDPELSEVIRPTPTGIPEFDLSRII
 PSEKPSSTLQYFPKSENQPPKAQPPNLHLMNLQNMMAEQTPSRPPNLPGQQGVQRLNMSMCHPGQMSLL
 GRTGVVPPQQGMVPHGLHQGVMSPPQGLMTQQNFMLMKQRGVGGEVYSQPPHMLSPQGSMLGPPPPQQLMV
 SHPLRQRSVSLDSQMGYLPAPGGMANLPF

TRTRPLE - GFP Tag - V

Restriction Sites: SgfI-MluI

Cloning Scheme:

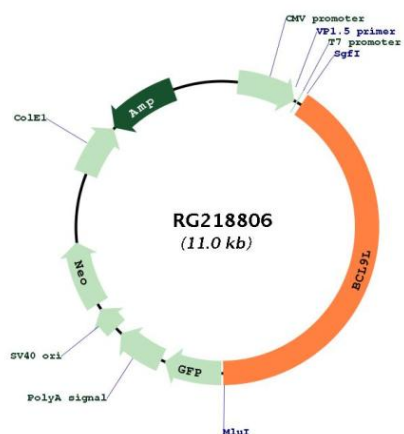


ACCN: NM_182557

ORF Size: 4497 bp

OTI Disclaimer:	The molecular sequence of this clone aligns with the gene accession number as a point of reference only. However, individual transcript sequences of the same gene can differ through naturally occurring variations (e.g. polymorphisms), each with its own valid existence. This clone is substantially in agreement with the reference, but a complete review of all prevailing variants is recommended prior to use. More info
OTI Annotation:	This clone was engineered to express the complete ORF with an expression tag. Expression varies depending on the nature of the gene.
Components:	The ORF clone is ion-exchange column purified and shipped in a 2D barcoded Matrix tube containing 10ug of transfection-ready, dried plasmid DNA (reconstitute with 100 ul of water).
Reconstitution Method:	<ol style="list-style-type: none">1. Centrifuge at 5,000xg for 5min.2. Carefully open the tube and add 100ul of sterile water to dissolve the DNA.3. Close the tube and incubate for 10 minutes at room temperature.4. Briefly vortex the tube and then do a quick spin (less than 5000xg) to concentrate the liquid at the bottom.5. Store the suspended plasmid at -20°C. The DNA is stable for at least one year from date of shipping when stored at -20°C.
RefSeq:	NM_182557.1 , NP_872363.1
RefSeq Size:	7539 bp
RefSeq ORF:	4500 bp
Locus ID:	283149
UniProt ID:	Q86UU0
Cytogenetics:	11q23.3
Gene Summary:	Transcriptional regulator that acts as an activator. Promotes beta-catenin transcriptional activity. Plays a role in tumorigenesis. Enhances the neoplastic transforming activity of CTNNB1 (By similarity).[UniProtKB/Swiss-Prot Function]

Product images:



Circular map for RG218806