

Product datasheet for **RG218797**

SUPT16H (NM_007192) Human Tagged ORF Clone

Product data:

Product Type: Expression Plasmids
Product Name: SUPT16H (NM_007192) Human Tagged ORF Clone
Tag: TurboGFP
Symbol: SUPT16H
Synonyms: CDC68; FACTP140; SPT16; SPT16/CDC68
Mammalian Cell Selection: Neomycin
Vector: pCMV6-AC-GFP (PS100010)
E. coli Selection: Ampicillin (100 ug/mL)
ORF Nucleotide Sequence: >RG218797 representing NM_007192
 Red=Cloning site Blue=ORF Green=Tags(s)

TTTTGTAATACGACTCACTATAGGGCGGCCGGAATTCGTCGACTGGATCCGGTACCGAGGAGATCTGCC
 GCC**CGATCGCC**

ATGGCTGTGACTCTGGACAAAGACGCTTATTATCGGCGAGTGAAGAGACTGTACAGCAATTGGCGGAAAG
 GAGAAGATGAGTATGCCAACGTTGATGCCATTGTTGTATCAGTGGGTGTTGATGAAGAAATTGTTTATGC
 CAAATCAACTGCCTTACAGACATGGCTCTTTGGTTATGAACTAAGTACTATCATGGTCTTTTGTGAT
 GACAAAATCATCTTTATGGCCAGCAAGAAAAAGTGGAGTTCCTGAAACAGATTGCCAACACTAAGGGCA
 ATGAGAATGCTAATGGAGCCCTGCCATCACACTGCTAATACGAGAAAAGAAATGAAAGTAATAAGAGTAG
 CTTTGACAAAATGATTGAAGCCATTAAAGAAAGCAAGAAATGGCAAGAAGATTGGAGTGTTCAGCAAAGAC
 AAATCCCTGGAGAGTTCATGAAGAGCTGGAATGACTGCCTCAACAAAGAAGGCTTTGACAAAATAGATA
 TCAGTGCAGTTGTGGCATATACCATCGCTGTAAAGGAGGATGGGGAGCTCAACCTAATGAAGAAAGCAGC
 CAGCATCACTTCTGAAGTCTTCAACAAATCTTCAAGGAAAGAGTCATGGAAATAGTTGATGCAGATGAG
 AAAGTTCGACACAGCAAAGTGGCTGAGTCTGTGAAAAGGCCATTGAAGAGAAAAATACCTTGCTGGGG
 CAGACCCTTCTACTGTGAAAATGTGTACCCTCCTATCATTGAGAGTGGTGGCACTATAATCTCAAGTT
 CAGTGTGGTGAAGTGAAGAATCATATGCACTTTGGGGCTACTTGTGCCATGGGATTCGCTTCAAG
 TCTTACTGCTCCAACCTTGTTCGCACTTTGATGGTTGATCCTTCTCAAGAAGTTCAAGAAAATTAACT
 TTTTGCTCCAGCTTCAAGAGGAGCTGCTGAAGGAATTAAGACATGGTGTGAAGATATGTGACGTGTATAA
 CGCTGTGATGGAGTGGTTAAAAAGCAGAAGCCAGAAGTCTGAACAAAATTACAAAAACCTAGGGTTT
 GGGATGGGAATTGAATCCGTGAAGGCTCCCTAGTAATCAATAGCAAAAATCAATACAACTGAAGAAAG
 GAATGGTTTTTCAGCATCAATTTAGGATTCTCAGACCTGACTAACAAGGAGGGGAAAAAGCCAGAAGAGAA
 AACCTATGCCCTGTTTATTGGTACACAGTCTTGTGGATGAGGATGGCCAGCTACTGTTCTCACTTCT
 GTGAAGAAGAAAGTGAAGAATGTGGGATTTTCTAAAGAATGAAGATGAGGAAGAAGAGGAGGAGGAGA
 AAGATGAGGCAGAGGACCTTTTGGGAAGAGTTCTCGGGCAGCATTACTTACAGAAAGAACAAGAAATGA
 AATGACTGCAGAAGAGAAGCGAAGAGCACATCAGAAAGAACTAGCGGCTCAACTCAATGAAGAAGCAAAG



[View online >](#)

```

AGGCGATTGACTGAACAAAAGGGAGAACAGCAGATTTCAGAAAGCTCGCAAGTCTAATGTGTCCTATAAAA
ACCCATCTCTGATGCCTAAGGAACCGCATATTCGGGAAATGAAGATCTACATCGATAAGAAATATGAGAC
TGTAATAATGCCCGTGTGGCATTGCAACACCGTTTCACATTGCCACAATCAAGAATAAAGTATGTCC
GTGGAAGGAGATTACTTACTTGCGAATCAACTTTTATTGCCAGGCAGTGTCTGGGCAGGAATGAAG
GCAACATCTTTCCCTAACCTGAAGCGACTTTTGTCAAGGAAATACATACCGAGCATCAAAATTAAGGC
ACCCGGAGAACAGACAGTACCAGCCTTGAACCTCAGAATGCTTCCGAATTATTAAGAAGTACAGAAA
CGTTATAAACTCGAGAAGCTGAAGAGAAGAGAAGGAGGGGATTGTAACAAGACTCACTGGTGATCA
ATCTAAACCGGAGTAATCCGAAACTGAAAGATCTATACATTCCGCCAAATATTGCCAAAAAGGATGCA
AGGCTCACTGGAGGCCATGTCAATGGCTTCCGCTTACATCTGTTTCGAGGAGACAAAGTGATATTTTG
TACAATAATTAAGCATGCTTTGTTCCAGCCCTGTGATGGAGAAATGATTATTGTCTTGCACTTTCACC
TCAAGAATGCCATCATGTTTGGGAAGAAGCGGCACACGGATGTGCAGTTCTACACAGAAGTGGGAGAGAT
AACCACGGACTTGGGAAACATCAGCATATGCATGACCGAGATGACCTCTATGCTGAGCAGATGGAACGA
GAAATGAGGCACAACTGAAACAGCCTTTAAAAATTTTCATTGAGAAAGTAGAGGCTCTAACTAAGGAGG
AACTGGAATTTGAAGTGCCTTTTAGGGACTTGGGATTTAACGGAGCTCCCTATAGGAGTACCTGCCTCT
TCAGCCACTAGTAGTGCCTGGTAAATGCTACGGAATGGCCACCTTTTGTGGTACATTGGATGAGGTA
GAGCTGATCCACTTTGAGCGGGTCCAGTTTCACCTGAAGAACTTTGATATGGTAATCGTCTACAAGGACT
ACAGCAAGAAAGTGACCATGATCAACGCCATTCCTGTAGCCTCTCTTGACCCCATCAAGGAATGGTTGAA
TTCTGCGACCTGAAATACACAGAAGGAGTACAGTCCCTCAACTGGACTAAAATCATGAAGACCATTGTT
GATGACCTGAGGGCTTCTTTCGAACAAGGTGGCTGGTCTTTCTGGAGCCTGAGGGTGAAGGGAGTGATG
CTGAAGAAGGGGATTGAGAGTCTGAAATGAAGATGAGACTTTTAACTCCTCAGAAGATGACTATGAAGA
GGAAGAGGAGGACAGTGTGAAGATTATCATCAGAAGCAGAAGAGTCACTATTCTAAGGAGTCAATG
GGTAGTGAAGAAGAGAGTGGAAAGGATTGGGATGAACTGGAGGAAGAAGCCCGAAAAGCGGACCCGAGAAA
GTGCTTACGAGGAAGAAGAACAAGTCAAGTATGAGCCGGAAGAGGAAGGCATCTGTGCACAGTTC
GGCCGTGGCTTAACCGTGGTTCAGACACAGCTCTGCACCCCAAGAAAAAGAGGAAG
    
```

ACGCGTACGCGGCCGCTCGAG - GFP Tag - GTTTAA

Protein Sequence:

>RG218797 representing NM_007192
 Red=Cloning site Green=Tags(s)

```

MAVTLDDKDAYRRVKRLYSNWRKGEDEYANVDAIVVSVGVDEEIVYAKSTALQTLWFGYELTDTIMVFC
DKIIFMASHKKVEFLKQIANTKGNENANGAPAITLLIREKNESNKSSFDMIEAIKESKNGKIGVFSK
KFPGEFMKSWNDCLNKEGFDKIDISAVVAYTIAVKEDGELNLMKKAASITSEVFNKFFKERVMEIVDA
KVRHSLAESVEKAIIEKKYLAGADPSTVEMCYPIIQSGGNYNLKFVSDKNHMHFGAITCAMGIRFK
SYCSNLVRTLMVDPSQEVQENYNFLQLQEELLKELRHGVKICDYYNAVMDVVKQKPELLNKITKNLGF
GMGIEFREGSLVINSKNQYKLLKGMVFSINLGFSDLTNKEGKPEEKTYALFIGDVLVDEDPATVLT
VKKKVKNVGIFLKNEDEEEEEEKDEAEDLLGRGSRAALLTERTRNEMTAEKRRAHQKELAAQLNEEAK
RRLTEQKGEQQIQKARKSNVSYKNPSLMPKEPHIREMKIYIDKKYETVIMPVFGIATPFHIATIKNISMS
VEGDYTYLRINFYCPGSALGRNEGNIFPNPEATFVKEITYRASNIKAPGEQTPALNLQNAFRIKEVQK
RYKTREAEKEKEGIVKQDSLVINLNRSNPCLKDLYIRPNIAQKRMQGSLEAHVNGFRFTSVRGDKVDIL
YNNIKHALFQPCDGMIIVLHFHLKNAIMFGKKRHTDVQFYTEVGEITTDLGKHQMHDRDDLAEQMER
EMRHKLKTAFFNFIEKVEALTKEELEFEVPPFDLGFNGAPYRSTCLLQPTSSALVNATEWPPFVVTLDEV
ELIHFERVQFHLKNFDMVIVYKDYSKVMTINAIIPVASLDPIKEWLNNSCDLKYTEGVQSLNWTIMKTIV
DDPEGFFEQGGWFLPEPEGSDAEEGDSESEIEDETFFNPSEDDYEEEEEDSDEYSSAEESDYSKESL
GSEESGKDWDELEEEARKADRESRYEEEEEQSRSMSRKRKASVHSSGRGSNRGRSHSSAPPKRRK
    
```

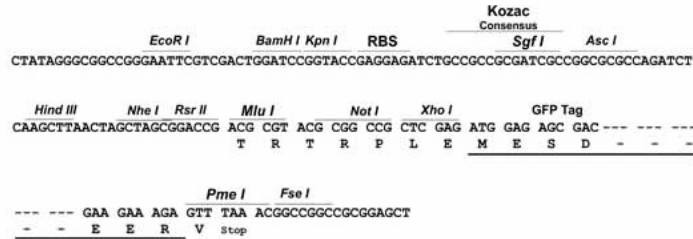
TRTRPLE - GFP Tag - V

Restriction Sites:

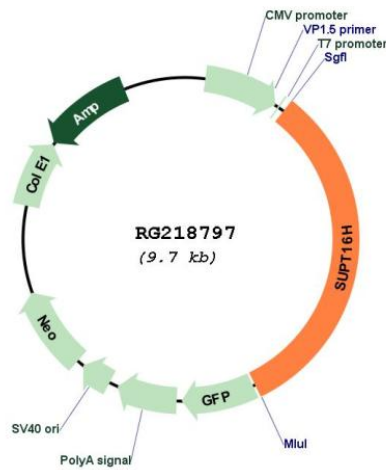
Sgfl-MluI

Cloning Scheme:

Cloning sites used for ORF Shutting:



Plasmid Map:



ACCN: NM_007192
 ORF Size: 3141 bp

OTI Disclaimer:	<p>Due to the inherent nature of this plasmid, standard methods to replicate additional amounts of DNA in E. coli are highly likely to result in mutations and/or rearrangements. Therefore, OriGene does not guarantee the capability to replicate this plasmid DNA. Additional amounts of DNA can be purchased from OriGene with batch-specific, full-sequence verification at a reduced cost. Please contact our customer care team at custsupport@origene.com or by calling 301.340.3188 option 3 for pricing and delivery.</p> <p>The molecular sequence of this clone aligns with the gene accession number as a point of reference only. However, individual transcript sequences of the same gene can differ through naturally occurring variations (e.g. polymorphisms), each with its own valid existence. This clone is substantially in agreement with the reference, but a complete review of all prevailing variants is recommended prior to use. More info</p>
OTI Annotation:	<p>This clone was engineered to express the complete ORF with an expression tag. Expression varies depending on the nature of the gene.</p>
Components:	<p>The ORF clone is ion-exchange column purified and shipped in a 2D barcoded Matrix tube containing 10ug of transfection-ready, dried plasmid DNA (reconstitute with 100 ul of water).</p>
Reconstitution Method:	<ol style="list-style-type: none">1. Centrifuge at 5,000xg for 5min.2. Carefully open the tube and add 100ul of sterile water to dissolve the DNA.3. Close the tube and incubate for 10 minutes at room temperature.4. Briefly vortex the tube and then do a quick spin (less than 5000xg) to concentrate the liquid at the bottom.5. Store the suspended plasmid at -20°C. The DNA is stable for at least one year from date of shipping when stored at -20°C.
RefSeq:	<p>NM_007192.2, NP_009123.1</p>
RefSeq Size:	<p>4696 bp</p>
RefSeq ORF:	<p>3144 bp</p>
Locus ID:	<p>11198</p>
UniProt ID:	<p>Q9Y5B9</p>
Cytogenetics:	<p>14q11.2</p>
Domains:	<p>Peptidase_M24</p>
Protein Families:	<p>Druggable Genome, Transcription Factors</p>
Gene Summary:	<p>Transcription of protein-coding genes can be reconstituted on naked DNA with only the general transcription factors and RNA polymerase II. However, this minimal system cannot transcribe DNA packaged into chromatin, indicating that accessory factors may facilitate access to DNA. One such factor, FACT (facilitates chromatin transcription), interacts specifically with histones H2A/H2B to effect nucleosome disassembly and transcription elongation. FACT is composed of an 80 kDa subunit and a 140 kDa subunit; this gene encodes the 140 kDa subunit. [provided by RefSeq, Feb 2009]</p>