

Product datasheet for **RG218783**

VN1R1 (NM_020633) Human Tagged ORF Clone

Product data:

Product Type:	Expression Plasmids
Product Name:	VN1R1 (NM_020633) Human Tagged ORF Clone
Tag:	TurboGFP
Symbol:	VN1R1
Synonyms:	V1RL1; VNR1911; ZVNH1; ZVNR1
Mammalian Cell Selection:	Neomycin
Vector:	pCMV6-AC-GFP (PS100010)
E. coli Selection:	Ampicillin (100 ug/mL)
ORF Nucleotide Sequence:	>RG218783 representing NM_020633 Red=Cloning site Blue=ORF Green=Tags(s)

TTTTGTAATACGACTCACTATAGGGCGGCCGGAATTCGTCGACTGGATCCGGTACCGAGGAGATCTGCC
GCC**CGATCGCC**

ATGGTTGGAGACACATTA~~AA~~ACTTCTGTCTCCACTGATGACAAGATACTTCTTTCTGCTTTTTTATTCTA
CTGATTCTTCAGACCTCAATGAAAATCAACATCCCCTAGATTTTGATGAAATGGCTTTTGGAAAAGTAA
ATCAGGGATTAGCTTCTCATTAGACTGGAGTTGGGATCCTGGGAAATCCTTCTCCTTTGTTTTAT
AACTTAATTTTGTTCACTGGACACAAGCTGAGACCCACGGACTTGATTCTCAGCCAAGTGGCTTGGCTA
ACTCCATGGTCTTTTCTTTAAAGGGATACCTCAGACAATGGCAGCTTTTGGATTGAAATATTTGCTGAA
TGACACTGGATGTAAGTTTGTCTTTTATTATCACAGGGTGGGCACAAGAGTTCCCTCAGACCATCTGC
CTTCTCAATGGATTCCAAGCCATTAAGCTCAACCCAGTATATGCAGGTGGATGGAGATCAAGATTAGAT
CCCCAAGGTTTATTGACTTCTGTGTCTCTCTGCTGGGCCCCCATGTCTTGATGAATGCATCTGTTCT
TCTATTAGTGAATGGCCCACTGAATAGCAAAAACAGTAGTGCAAAAACAATTATGGATACTGTTCTTAC
AAAGCATCAAAGAGATTTAGCTCATTACATGCAGTCTTATATTTTCCCCTGATTTTATGAGTTGGGCT
TCATGGTCTGGGCCAGTGGCTCCATGGTCTTCTCCTCTACAGACACAAGCAGCAAGTCCAACACAATCA
CAGCAACAGACTCTCCTGCAGACCTTCCCAGGAAGCCAGAGCCACACACACCATCATGGTCTGGTGAGC
TCCTTTTTTGTCTTCTATTAGTCCATAGTTTCTGACAATTTGGACAAGTGTAGTTGCAACCCAGGCC
AGTGGATAGTGACCAACTCTGTGTGGTGCCTCATGTTTCCCAGCACGACGCCCTTTTGTCTCATCAT
GAGTGATACTCATATCTCTCAGTCTGTTTTGCCTGCAGGACAAGGAAAACACTCTTTCCTAATCTGGTT
GTCATGCCA

ACGCGTACGCGGCCGCTCGAG - GFP Tag - GTTTAA



[View online »](#)

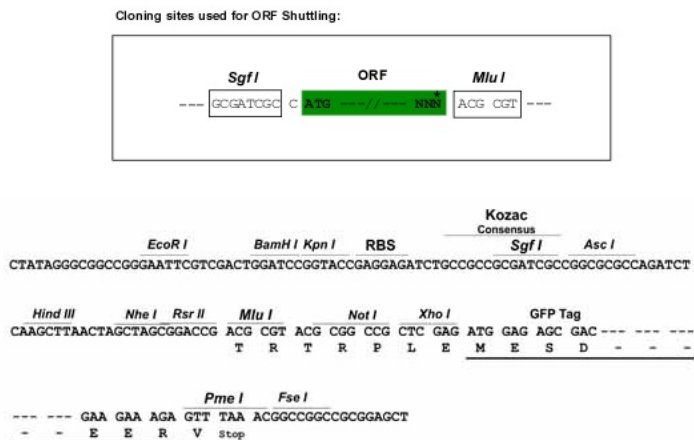
Protein Sequence: >RG218783 representing NM_020633
Red=Cloning site Green=Tags(s)

MVGDTLKLLSPLMTRYFFLLFYSTDSSDLNENQHPLDFDEMAFGVKVSGISFLIQTGVGILGNSFLLCFY
 NLILFTGHKLRPTDLILSQLALANSMVLFFKGIPTMAAFGLKYLLNDTGCKFVYYHRVGTTRVSLSTIC
 LLNGFQAIKLNPSICRWMEIKIRSPRFIDFCLLCWAPHVLMNASVLLL VNGPLNSKNSSAKNNYGYCSY
 KASKRFFSSLHAVLYFSPDFMSLGFMVWASGSMVFFLYRHKQQVQHNHSNRLSCRPSQEARATHTIMVLVS
 SFFVFYSVHSFLTIIWTTVVANPGQWIVTNSVLVASCFFPARSPFVLIIMSDTHISQFCACRTRKTLFPNLV
 VMP

TRTRPLE - GFP Tag - V

Restriction Sites: SgfI-MluI

Cloning Scheme:



ACCN: NM_020633

ORF Size: 1059 bp

OTI Disclaimer: The molecular sequence of this clone aligns with the gene accession number as a point of reference only. However, individual transcript sequences of the same gene can differ through naturally occurring variations (e.g. polymorphisms), each with its own valid existence. This clone is substantially in agreement with the reference, but a complete review of all prevailing variants is recommended prior to use. [More info](#)

OTI Annotation: This clone was engineered to express the complete ORF with an expression tag. Expression varies depending on the nature of the gene.

Components: The ORF clone is ion-exchange column purified and shipped in a 2D barcoded Matrix tube containing 10ug of transfection-ready, dried plasmid DNA (reconstitute with 100 ul of water).

Reconstitution Method:

1. Centrifuge at 5,000xg for 5min.
2. Carefully open the tube and add 100ul of sterile water to dissolve the DNA.
3. Close the tube and incubate for 10 minutes at room temperature.
4. Briefly vortex the tube and then do a quick spin (less than 5000xg) to concentrate the liquid at the bottom.
5. Store the suspended plasmid at -20°C. The DNA is stable for at least one year from date of shipping when stored at -20°C.

RefSeq: [NM_020633.3](#)

RefSeq Size: 1313 bp

RefSeq ORF: 1062 bp

Locus ID: 57191

UniProt ID: [Q9GZP7](#)

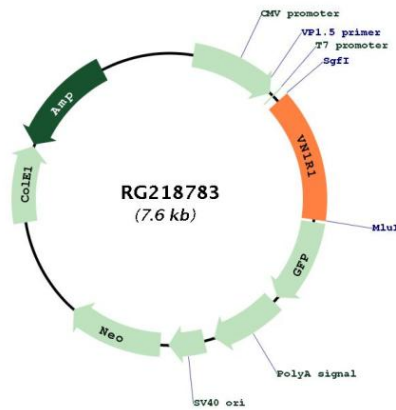
Cytogenetics: 19q13.43

Domains: V1R

Protein Families: Druggable Genome, GPCR, Transmembrane

Gene Summary: Pheromones are chemical signals that elicit specific behavioral responses and physiologic alterations in recipients of the same species. The protein encoded by this gene is similar to pheromone receptors and is primarily localized to the olfactory mucosa. An alternate splice variant of this gene is thought to exist, but its full length nature has not been determined. [provided by RefSeq, Jul 2008]

Product images:



Circular map for RG218783