

Product datasheet for **RG218763**

TFIIE alpha (GTF2E1) (NM_005513) Human Tagged ORF Clone

Product data:

Product Type:	Expression Plasmids
Product Name:	TFIIE alpha (GTF2E1) (NM_005513) Human Tagged ORF Clone
Tag:	TurboGFP
Symbol:	TFIIE alpha
Synonyms:	FE; TF2E1; TFIIE-A
Mammalian Cell Selection:	Neomycin
Vector:	pCMV6-AC-GFP (PS100010)
E. coli Selection:	Ampicillin (100 ug/mL)
ORF Nucleotide Sequence:	>RG218763 representing NM_005513 Red=Cloning site Blue=ORF Green=Tags(s)

TTTTGTAATACGACTCACTATAGGGCGGCCGGAATTCGTCGACTGGATCCGGTACCGAGGAGATCTGCC
GCC**CGATCGCC**

ATGGCAGACCCAGATGTCCTCACTGAAGTTCAGCAGCATTGAAGCGGTTAGCCAAGTATGTGATCCGGG
GATTTTATGGCATTGAGCATGCCTTGGCCTTGGACATCTTGATCAGGAACTCCTGTGTGAAAGAGGAGGA
TATGCTGGAGCTGCTCAAGTTTGTATCGGAAGCACTTCGATCAGTTTTGAATAATTTAAAGGGAGACAAG
TTTATCAAATGCAGAATGAGGGTAGAGACTGCTGCAGACGGGAAAACCACTCGCCATAACTACTACTTCA
TCAATTATCGTACTCTTGTAAATGTGGTAAAATAAACTGGACCACATGAGAAGAAGAATTGAGACCGA
TGAGAGAGATTGACCAACCGGGCTTCCTTCAAATGTCCTGTCTGTAGTAGTACTTTACAGACTTAGAA
GCTAATCAGCTCTTTGATCCTATGACAGGAACTTCCGCTGTACTTTTTGCCATACAGAGGTAGAAGAGG
ATGAATCAGCAATGCCCAAAAAGATGCACGCACACTTTTGGCAAGGTTAATGAACAAATTGAGCCCAT
TTATGCATTGCTTCGGGAGACAGAGGATGTGAACCTGGCCTATGAAATACTTGAGCCAGAACCACAGAA
ATCCCAGCCCTGAAACAGAGCAAGGACCATGCAGCACTACTGCTGGAGCTGCTAGCCTAGCAGGTGGGC
ACCACCGGAAGCATGGGCCACCAAGGTCCTTCTATGAAGACTTATACACTCAGAATGTTGTCAATTA
CATGGATGACCAAGAAGATCTTCATCGAGCCTCACTGGAAGGGAAATCTGCCAAAGAGAGGCCTATTTGG
TTGAGAGAAAGCACTGTCCAAGGGCATATGGTTCTGAAGATATGAAAGAAGGGGCATAGATATGGAG
CATTTTCAGGAGCGTGAGGAAGGCCATGCTGGCCTGATGACAACGAAGAGGTCATGCGAGCACTGCTCAT
TCACGAGAAAAAGACTTCTCTGCCATGGCTGGTTCAGTGGGGCAGCTGCTCCAGTGACCCTGCCAAT
GGCGATGACTCAGAAAGCGAGACCAGTGAGTCAGATGATGATTCTCCACCCCGTCCGGCAGCTGTGGCTG
TGCATAAACGAGAAGAGGATGAAGAGGAAGATGACGAGTTTGAAGAAGTAGCAGATGACCCCATGTCAT
GGTGGCTGGCCGTCGGTTCTCTACAGTGAAGTGAAGCAACGGCCAGAGCTAGTGGCCAGATGACACCA
GAAGAAAAGGAAGCATATATAGCAATGGGACAACGCATGTTTGAGGACCTCTTTGAG

ACGCGTACGCGGCCGCTCGAG - GFP Tag - GTTTAA



[View online »](#)

Protein Sequence: >RG218763 representing NM_005513
 Red=Cloning site Green=Tags(s)

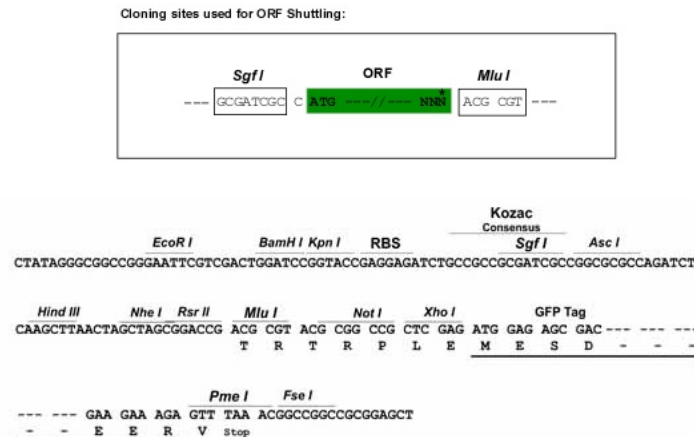
MADPDVLTEVPAALKRLAKYVIRGFYGIIEHALDILIRNSCVKEEDMLELLKFDRKQLRSVLNNLKGDK
 FIKCRMVETAADGKTRRHNYFINYRTLNVVVKYKLDHMRRIETDERDSTNRASFKCPVCSSTFDLE
 ANQLFDPMTGTRCTFCHEVEEDESAMPKKDARTLLARFNEQIEPIYALLRETEDVNLAYEILEPEPTE
 IPALKQSKDHAATTAGAASLAGGHHREAWATKGPSYEDLYTQNVVINMDDQEDLHRASLEGKSAKERPIW
 LRESTVQAYGSEDMKEGGIDMDAFQEREEGHAGPDDNEEVMRALLIHEKKTSSAMAGSVGAAAPVTAAN
 GDDSESETSESDDSPRPAAVAVHKREDEEEDDEFEEVADDPIMVAGRPFYSYSEVSQRPELVAQMTP
 EEKEAYIAMQRMFEDLFE

TRTRPLE - GFP Tag - V

Restriction Sites:

SgfI-MluI

Cloning Scheme:



ACCN: NM_005513

ORF Size: 1317 bp

OTI Disclaimer: The molecular sequence of this clone aligns with the gene accession number as a point of reference only. However, individual transcript sequences of the same gene can differ through naturally occurring variations (e.g. polymorphisms), each with its own valid existence. This clone is substantially in agreement with the reference, but a complete review of all prevailing variants is recommended prior to use. [More info](#)

OTI Annotation: This clone was engineered to express the complete ORF with an expression tag. Expression varies depending on the nature of the gene.

Components: The ORF clone is ion-exchange column purified and shipped in a 2D barcoded Matrix tube containing 10ug of transfection-ready, dried plasmid DNA (reconstitute with 100 ul of water).

Reconstitution Method:

1. Centrifuge at 5,000xg for 5min.
2. Carefully open the tube and add 100ul of sterile water to dissolve the DNA.
3. Close the tube and incubate for 10 minutes at room temperature.
4. Briefly vortex the tube and then do a quick spin (less than 5000xg) to concentrate the liquid at the bottom.
5. Store the suspended plasmid at -20°C. The DNA is stable for at least one year from date of shipping when stored at -20°C.

RefSeq: [NM_005513.1](#), [NP_005504.1](#)

RefSeq Size: 2969 bp

RefSeq ORF: 1320 bp

Locus ID: 2960

UniProt ID: [P29083](#)

Cytogenetics: 3q13.33

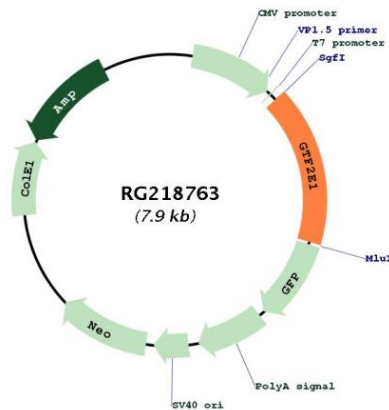
Domains: TFIIE

Protein Families: Transcription Factors

Protein Pathways: Basal transcription factors

Gene Summary: Recruits TFIIH to the initiation complex and stimulates the RNA polymerase II C-terminal domain kinase and DNA-dependent ATPase activities of TFIIH. Both TFIIH and TFIIE are required for promoter clearance by RNA polymerase.[UniProtKB/Swiss-Prot Function]

Product images:



Circular map for RG218763