

Product datasheet for **RG218761**

PLD3 (NM_012268) Human Tagged ORF Clone

Product data:

Product Type:	Expression Plasmids
Product Name:	PLD3 (NM_012268) Human Tagged ORF Clone
Tag:	TurboGFP
Symbol:	PLD3
Synonyms:	AD19; HU-K4; HUK4; SCA46
Mammalian Cell Selection:	Neomycin
Vector:	pCMV6-AC-GFP (PS100010)
E. coli Selection:	Ampicillin (100 ug/mL)



[View online »](#)

ORF Nucleotide Sequence:

>RG218761 representing NM_012268
 Red=Cloning site Blue=ORF Green=Tags(s)

TTTTGTAATACGACTCACTATAGGGCGGCCGGAATTCGTCGACTGGATCCGGTACCGAGGAGATCTGCC
 GCC**CGCATCGCC**

ATGAAGCCTAAACTGATGTACCAGGAGCTGAAGGTGCCTGCAGAGGAGCCCGCCAATGAGCTGCCATGA
 ATGAGATTGAGGCGTGAAGGCTGCGGAAAAGAAAGCCCGCTGGGTCTGCTGGTCTCATTCTGGCGGT
 TGTGGGCTTCGGAGCCCTGATGACTCAGCTGTTTCTATGGGAATACGGGACTTGATCTCTTTGGGCC
 AACCCAGCGCCAGCCCTGCTATGACCCTTGCAGAGCAGTGTGGTGAAGCATTCTGAGGGCTGG
 ACTTCCCAATGCCTCCACGGGAAACCCTCCACCAGCCAGGCCTGGCTGGGCTGCTCGCCGGTGC
 CAGCAGCTGGACATCGCTCCTTCTACTGACCCTCACCAACAATGACACCCACACGCAGGAGCCCTCT
 GCCCAGCAGGGTGAAGGCTCCCGCAGCTGCAGACCCTGGCACCAGGGCGTGAACGTCGCATCG
 CTGTGAGCAAGCCAGCGGGCCAGCCACAGGGGACCTGCAGGCTCTGCTGCAGAGCGGTGCCAGGT
 CCGCATGTTGACATGCAGAAGCTGACCATGGCGTCTGCATACCAAGTCTGGGTGGTGGACCAGACC
 CACTTCTACCTGGCAGTGCCAACATGGACTGGGTTCACTGACCAGGTCAAGGAGCTGGGCGTGGTCA
 TGTACAACCTGCAGCTGCCTGGCTCGAGACCTGACCAAGATCTTTGAGGCTACTGTTTCTGGGCCAGGC
 AGGCAGCTCCATCCCATCAACTGGCCCGGTTCTATGACACCCGCTACAACCAAGAGACACCAATGGAG
 ATCTGCCTCAATGGAACCCCTGCTCTGGCTACCTGGCGAGTGCGCCCCACCCCTGTGTCCAAGTGGCC
 GCACTCCAGACCTGAAGGCTCTACTCAACGTGGTGGACAATGCCCGGAGTTTCATCTACGTCGCTGCAT
 GAACTACCTGCCACTCTGGAGTCTCCACCCTCACAGTTCGGCTGCCATTGACGATGGGCTGCGG
 CGGGCCACCTACGAGCGTGGCGTCAAGGTGCGCCTGCTCATCAGCTGCTGGGACACTCGGAGCCATCCA
 TCGGGCCTTCTGCTCTCTGGCTGCCCTGCGTGACAACCACTCCACTCTGACATCCGAGTGA
 CTTTGTGGTCCCCGCGGATGAGGCCAGGCTCGAATCCCATATGCCCGTGTCAACCACAACAAGTACATG
 GTGACTGAACGCGCCACCTACATCGAACTCCAAGTGGTCTGGCAACTCTTACGAGACGGCGGCA
 CCTCGCTGCTGGTACGCAGAATGGGAGGGGCGGCTGCGGAGCCAGCTGGAGGCCATTTCTGAGGGA
 CTGGGACTCCCTTACAGCCATGACCTTACACCTCAGCTGACAGCGTGGCAACGCCTGCCGCTGCTC

ACGCGTACGCGGCCGCTCGAG - GFP Tag - GTTTAA

Protein Sequence:

>RG218761 representing NM_012268
 Red=Cloning site Green=Tags(s)

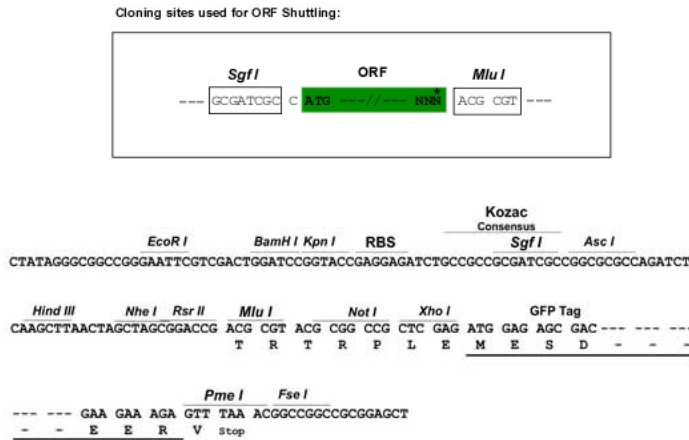
MKPKLQMYQELKVPAAEPPANELPMNEIEAWKAAEKARWVLLVLLAVVGFALMTQLFLWEYGDHLHFGP
 NQRPAFCYDPCAVLVEIPEGLDFPNASTGNPSTSQAWLGLLAGAHSSLDIASFYWTLTNNDTHTQEPS
 AQQGEEVLRQLQTLAPKGVNRIAVSKPSGPQPQADLQALLQSGAQVRMVDQMQLTHGVLHTKFWVVDQT
 HFYLGANMDWRSLSLQVKELGVVMYNCCLARDLTKIFEAYWFLGQAGSSIPSTWPRFYDTRYNQETPME
 ICLNGTPALAYLASAPPLCPSGRTPDLKALLNVVDNARSFIYVAVMNYLPTLEFSHPHFWPAIDGGLR
 RATYERGVKVRLLISWGHSEPSMRAFLLSLAALRDNHTSDIQVKLFVVPADAEQARIPYARVNHNKYM
 VTERATYIGTSNWSGNYFTETAGTSLLVTONRGGGLRSQLEAIFLRDWDSPYSHDLDTSDSVGNACRLL

TRTRPLE - GFP Tag - V

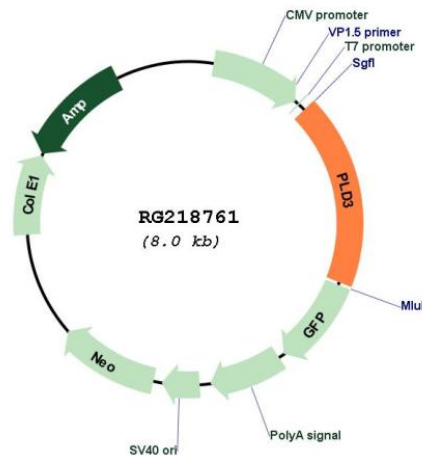
Restriction Sites:

Sgfl-MluI

Cloning Scheme:



Plasmid Map:



ACCN: NM_012268

ORF Size: 1470 bp

OTI Disclaimer: The molecular sequence of this clone aligns with the gene accession number as a point of reference only. However, individual transcript sequences of the same gene can differ through naturally occurring variations (e.g. polymorphisms), each with its own valid existence. This clone is substantially in agreement with the reference, but a complete review of all prevailing variants is recommended prior to use. [More info](#)

OTI Annotation: This clone was engineered to express the complete ORF with an expression tag. Expression varies depending on the nature of the gene.

Components: The ORF clone is ion-exchange column purified and shipped in a 2D barcoded Matrix tube containing 10ug of transfection-ready, dried plasmid DNA (reconstitute with 100 ul of water).

Reconstitution Method:

1. Centrifuge at 5,000xg for 5min.
2. Carefully open the tube and add 100ul of sterile water to dissolve the DNA.
3. Close the tube and incubate for 10 minutes at room temperature.
4. Briefly vortex the tube and then do a quick spin (less than 5000xg) to concentrate the liquid at the bottom.
5. Store the suspended plasmid at -20°C. The DNA is stable for at least one year from date of shipping when stored at -20°C.

RefSeq: [NM_012268.4](#)

RefSeq Size: 2424 bp

RefSeq ORF: 1473 bp

Locus ID: 23646

UniProt ID: [Q8IV08](#)

Cytogenetics: 19q13.2

Domains: PLDc

Protein Families: Transmembrane

Gene Summary: This gene encodes a member of the phospholipase D (PLD) family of enzymes that catalyze the hydrolysis of membrane phospholipids. The encoded protein is a single-pass type II membrane protein and contains two PLD phosphodiesterase domains. This protein influences processing of amyloid-beta precursor protein. Mutations in this gene are associated with Alzheimer disease risk. Alternatively spliced transcript variants encoding the same protein have been found for this gene. [provided by RefSeq, Apr 2014]