

Product datasheet for **RG218748**

KDM5D (NM_004653) Human Tagged ORF Clone

Product data:

Product Type:	Expression Plasmids
Product Name:	KDM5D (NM_004653) Human Tagged ORF Clone
Tag:	TurboGFP
Symbol:	KDM5D
Synonyms:	HY; HYA; JARID1D; SMCY
Mammalian Cell Selection:	Neomycin
Vector:	pCMV6-AC-GFP (PS100010)
E. coli Selection:	Ampicillin (100 ug/mL)
ORF Nucleotide Sequence:	>RG218748 representing NM_004653 Red=Cloning site Blue=ORF Green=Tags(s)

TTTTGTAATACGACTCACTATAGGGCGGCCGGAATTCGTCGACTGGATCCGGTACCGAGGAGATCTGCC
GCC**CGATCGCC**

ATGGAACCGGGTGTGACGAGTTCCTGCCGCCACCGGAGTGCCCGTTTTGAGCCTAGCTGGGCTGAAT
TCCAAGACCCGCTTGGCTACATTGCGAAAATAAGGCCATAGCAGAGAAGTCTGGCATCTGCAAAATCCG
CCCACCCGCGATTGGCAGCCTCCTTTGCAAGTAGAAGTTGACAATTTAGATTTACTCCTCGCTCCAA
AGGCTAAATGAACTGGAGGCCAACTAGAGTGAATTTGAACTATTTGGATCAGATTGCAAAATCTGGG
AAATCAAGGCTCCTCTTTAAAGATTCCCAATGTGGAGCGGAAGATCTTGGACCTCTACAGCCTTAGTAA
GATTGTGATTGAGGAAGGTGGCTATGAAGCCATCTGCAAGGATCGTCGGTGGGCTCGAGTTGCCAGCGT
CTCCACTACCCACCGCAAAAACATTGGCTCCCTGCTACGATCACATTACGAACGCATTATTTACCCCT
ATGAAATGTTTTCAGTCTGGAGCCAACCATGTGCAATGTAACACACACCCGTTTTGACAATGAGGTAAGA
TAAGGAATACAAGCCCCACAGCATCCCCCTTAGACAGTCTGTGCAGCCTTCAAAGTTCAGCAGCTACAGT
CGACGGGCAAAAAGGCTACAGCCTGATCCAGAGCCTACAGAGGAGGACATTGAGAAGCATCCAGAGCTAA
AGAAGTTACAGATATATGGGCCAGTCCCAAAATGATGGGCTTGGGCTTATGGCTAAGGATAAAGGATAA
GACTGTGCATAAGAAAGTCACATGCCCCCAACTGTTACGGTGAAGGATGAGCAAAGTGGAGGTGGGAAC
GTGTCATCAACATTGCTCAAGCAGCACTTGAGCCTAGAGCCCTGCACTAAGACAACCATGCAACTTCGAA
AGAATCACAGCAGTGCCAGTTTTATTGACTCATATATTTGCCAAGTATGCTCCCGTGGGGATGAAGATGA
TAAGCTCTTTTTCTGTGATGGCTGTGATGACAATTACCACATCTTCTGCTTGTACCACCCCTTCTGAA
ATCCCCAGAGGCATCTGGAGGTGCCAAAATGTATCTTGGCGGAGTGAAACAGCCTCCTGAAGCTTTTG
GATTTGAACAGGCTACCCAGGAGTACAGTTTGCAGAGTTTTGGTGAATGGCTGATTCTTCAAGTCCGA
CTACTTCAACATGCCTGTACATATGGTGCCTACAGAACTGTAGAGAAGGAATTTGGAGGCTGGTGAAGC
AGCATTGAGGAAGACGTGACAGTTGAATATGGAGCTGATATTCATTCCAAAGAATTTGGCAGTGGCTTTC
CTGTCAGCAATAGCAAACAAAATTATCTCCTGAGGAGAAGGAGTATGCGACCAGTGGTTGGAACCTGAA
TGTGATGCCAGTCTAGATCAGTCTGTTCTCTGTCACATCAATGCAGACATCTCAGGCATGAAGGTGCC



[View online >](#)

TGGCTGTACGTGGGCATGGTTTTCTCAGCATTTTGTGGCATATTGAGGATCACTGGAGTTACTCTATTA
ACTATCTGCATTGGGGTGGAGCCGAAGACCTGGTATGGTGTACCCTCCCTGGCAGCAGAGCATTGGAGGA
GGTGATGAAGATGCTGACACCTGAGCTGTTTATAGCCAGCCTGATCTCTACACCAGCTTGTCACTCTC
ATGAATCCCAACTTTGATGTCCCATGGTGTGCCAGTTGCCGACAAACCAGTGTGCAGGGGAGTTTG
TCATCACTTTTCTCGTGCTTACCACAGTGGTTTAACCAAGGCTACAATTTTGTGAAGCTGTCAACT
TTGACTGCTGACTGGCTACCTGCTGGACGCCAGTGCATTGAACACTACCGCCGGCTCCGGCCGCTATTGT
GTCTTCTCCACAGGAGCTCATCTGCAAGATGGCTGCCCTCCAGAGACGTTGGATCTCAATCTAGCAG
TAGCTGTGCACAAGGAGATGTTTATTATGGTTCAGGAGGAGCGACGTCTACGAAAAGGCCCTTTGGAGAA
GGCGCTCACGGAGGCTGAGCGAGAGGCTTTTGTAGCTGCTCCAGATGATGAACGCCAGTGCATCAAGTGC
AAGACCACGTGCTTCTTGTGAGCCCTGGCCTGCTACGACTGCCAGATGGCCTTGTATGCCTTTCCACA
TCAATGACCTCTGCAAGTGTCTAGTAGCCGACAGTACCTCCGGTATCGGTACACCTTGGATGAGCTCCC
CACCATGTGCATAAACTGAAGATTCGGGCTGAGTCTTTTACACCTGGGCAACAAAGTGCAGTGGCC
TTGGAGGTGGAGGATGGCCGTAACGCAGCTTTGAAGAGCTAAGGGCACTGGAGTCTGAGGCTCGTGA
GGAGGTTTCTAATAGTGAAGTGTCTCAGCGACTGAAGAACTGCCTGAGTGAAGTGGAGGCTTGTATTGC
TCAAGTCTGGGCTGGTCAAGTGGTCAAGTGGCCAGGATGGACACTCCACAGCTGACCTTACTGAACTC
CGGGTCTTCTTGTAGCAGATGGGAGCCTGCCCTGTGCCATGCATCAGATTGGGGATGTCAGGATGTCC
TGGAACAGGTGGAGGCTATCAAGCTGAGGCTCGTGAAGGCTTGCCACACTGCCCTCTAGTCCAGGGCT
ATTGCGGTCCCTGTTGGAGAGGGGGCAGCAGTGGGTGTAGAGGTGCCTGAAGCCATCAGCTTCAGCAG
CAGGTGGAGCAGGCGCAATGGCTAGATGAAGTGAAGCAGGCCCTGGCCCTTCTGCTCACAGGGGCTCTC
TGGTCACTATGCAGGGGCTTTTGGTTATGGGTGCCAAGATAGCCTCCAGCCCTTCTGTGGACAAGCCCCG
GGCTGAGCTGCAAGAAGTACTGACCATTCAGAGCGCTGGGAAGAAAAGGCTCATTTCTGCTGGAGGCC
AGGCAGAAGCATCCACCAGCCACATTGGAAGCCATAATTCGTGAGACAGAAAACATCCCTGTTCACTGCTC
TAACATCCAGGCTCTCAAGAAGCTTGACTAAGGCACAAGCTTGGATTGCTGATGGATGAGATCCA
AAATGGTGACCCTACCCCTGTCTAGATGACTTGGAGGGCTGGTGGCTGTGGCCGGGACTGCCCTGTG
GGGCTGGAAGAGCTGAGACAGCTAGAGCTGAGGTTTGGAGCAGCATTCTGGAGAGAGAAGGCCCTCCA
AGACCTTTCTCAAGAAGAATTCTTGTACACACTGCTTGAAGTGTCTTGGCCGTGTGACAGCCTGGCTC
AGACAGCACCAAGCGTAGCCGTGGATGGAGAAGGCGCTGGGTTGTACCAGTGTGACACAGAGCTGCTG
GGGCTGTCTGCACAGGACCTCAGAGACCCAGGCTCTGTGATTGTGGCCTCAAGGAAGGGGAACAGAAGG
AGAAGGAGGATCCTGCAGCTGCGTGCACCAACTCAGCCAAGCCAGTCCACTGGCACCATCCCTCAT
GGCCTCTTCTCCGACTTCTATCTGTGTGTGGCAGGTGCCAGCTGGGGTGGGAGTTCTGCAGTGTGAC
CTGTGTCAAGGACTGGTTCATGGGCAAGTGTGTGTCAGTGGCCATCTCCTCACCTCTCCAAGCCAGTC
TCACTTCACTCCACTGCTAGCCTGGTGGGAATGGGACACAAAATTCCTGTGCTCACTGTGTATGCGCTC
ACGACGGCCACGCTAGAGACAATCCTAGCCTTGCTGGTTGCCCTGCAGAGGCTGCCCGTGGGCTGCCCT
GAGGGTGAAGCCCTTCAAGTGTCTCACAGAGAGGGCCATTGGCTGGCAAGACCGTCCAGAAAAGGCTCTGG
CCTCTGAAGATGTGACTGCTCTGTTGCGACAGCTGGCTGAGCTTCGCCAACAGCTACAGGCCAAACCCAG
ACCAGAGGAGGCTCAGTCTACACTTACGCACTGCCTGTGACCTATCAGAGAAGGCAGTGGCAACAAT
ATTTCTAAGGTCCAAGGGCTGCTGGAGAATGGAGACAGTGTGACCAGTCTGAGAATGGCTCCAGGAA
AGGGCTCTGACCTGGAGCTACTGTCTCACTGTTGCCGAGTTGACTGGCCCTGTGTTGGAGTGCCTGA
GGCAATCCGGGCTCCCTGGAGGAGCTCATGATGGAAGGGGACCTGCTTGAAGTACCCTGGATGAGA
CACAGCATCTGGCAGCTGCTGCAGGCTGGACAGCCTCCAGACCTGGACAGAATTCGCACACTTCTGGAGC
TGGAAAAATTTGAACATCAAGGGAGTCGGACAAGGAGCCGGGCTCTGGAGAGGCGACGGCGGCGGAGAA
GGTGGATCAGGGTAGAAACGTTGAGAATCTTGTCAACAGGAGCTTCAAGTCAAAAAGGGCTCGGAGCTCA
GGGATTATGTCTCAGGTGGGCCGAGAAGAACAATTATCAGGAGAAAAGCAGACCGTGAATAATGTTCC
TGACACCTTCCACAGACCACAGCCCTTCTTGAAGGAAACAAAATAGCTTACAACACAAGGATTCAGG
CTCTTCACTGCTTGTCTTCTTAATGCCTTTGCTACAACCTCTCCTACTCTGATGAGCAACAGTTG

ACGCGTACGCGGCCGCTCGAG - GFP Tag - GTTTAA

Protein Sequence: >RG218748 representing NM_004653
 Red=Cloning site Green=Tags(s)

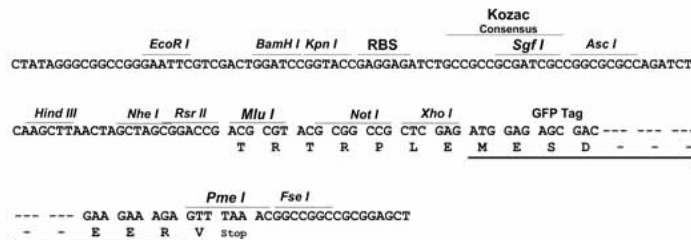
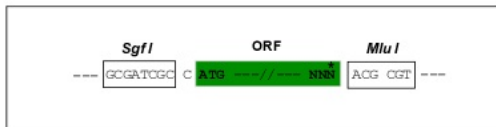
MEPGCDEFLPPPECPVFEPSSWAEFQDPLGYIAKIRPIAEKSGICKIRPPADWQPPFAVEVDNFRFTPRVQ
 RLNELEAQTRVKLNLYLDQIAKFWEIQGSSLKIPNVERKILDLYLSKIVIEEGGYEAICKDRRWARVAQR
 LHYPGKNIGSLLRSHYERIIYPYEMFQSGANHVQCNTHPFDNEVKDKEYKPHSIPLRQSVQPSKFSYS
 RRAKRLQPDPEPTEEDIEKHPELKKLQIYGP GPKMMGLGLMAKDKDKTVHKKVTCPTVTVKDEQSGGGN
 VSSTLLKQHLSELPCTKTTMLRKNHSSAQFIDSYICQVCSRGEDEDDKLLFCDGCCDDNYHIFCLLPPLPE
 IPRGIWRCPKCILAECKQPPEAFGFEQATQEYSLQSFGEADSFKSDYFNMPVHMVPTTELVEKEFWRLVS
 SIEEDVTVEYGADIIHSKEFGSGFPVSNKQNLSPREEKEYATSGWNLNVMPVLDQSVLCHINADISGMKVP
 WLYVGMVSAFCWHIEDHWSYSINYLHWGEPKTYGVP SLAAEHL EEVKMLTPELFDSDPDLHLQVTL
 MNPNTLM SHGVPVVRTNQ CAGEFVITFP RAYHSGFNQGYNFAEAVNFCTADWLPAGRQCIEHYRRLRRYC
 VFSHEELICKMAAFPETLDLNLAVAVHKEMFIMVQEERLRKALLEKGVTEAEREAFELLPDDERQCIKC
 KTT CFLSALACYDCPDGLVCLSHINDLCKCSSRQYLRYRYTLDLPTMLHKLKIRAESFDTWANKVRVA
 LEVEDGRKRSFEELRALESEARERRFPNSELLQRLKNCLSEVEACIAQVLGLVSGQVARMPTPQLTTEL
 RVLLEQMGSLPCAMHQIGDVKDQLEQVEAYQAEAREALATLPSSPGLLRSLLEERGQQLGVEVPEAHLQQ
 QVEQAQWLDEVKQALAPSAHRGSLVIMQGLLVMGAKIASSPSVDKARAEQLLETTIAERWEEKAHFCLEA
 RQKHPPATLEAIIRETENIPVHLPNIQALKEALTKAQAWIADVDEIQNGDHYPCLDDLEGLVAVGRDLPV
 GLEELRQLELQVLTASHWREKASKTFLKKNSCYTLLEVLCPCADAGSDSTKRSRWMEKALGLYQCDTELL
 GLSAQDLRDPGVSIVAFKEGEQKEKEGILQLRRTNSAKPSPLAPSLMASSPTSICVCGQVPAGVGLQCD
 LCQDWFHGQCVSVP HLLTSPKPSLTSSPLLAWEWDTKFLCPLCMRSRRRPLETILALLVALQRLPVRLP
 EGELQCLTERAIGWQDRARKALASEDVTALLRQLAELRQLQAKPRPEEASVYTSATACDP IREGSGNN
 ISKVQGLLENGDSVTSPE NMAPGKGS DLELLSSLLPQLTGPVLELPEAIRAPLEELMMEGDLLLEVTLDEN
 HSIWQLLQAGQPPDLDRIRTLLELEKFEHQSRTRSRLERRRRRQKVDQGRNVENLVQELQSKRARSS
 GMSQVGREEEHYQEKADRENMF LTPSTDHSPFLKGNQNSLQHKDSGSSAACPSLMPLLQLSYSDEQQL

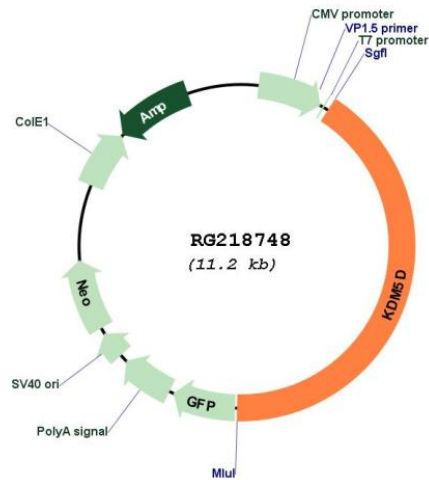
TRTRPLE - GFP Tag - V

Restriction Sites: SgfI-MluI

Cloning Scheme:

Cloning sites used for ORF Shutting:



Plasmid Map:


ACCN: NM_004653

ORF Size: 4617 bp

OTI Disclaimer: The molecular sequence of this clone aligns with the gene accession number as a point of reference only. However, individual transcript sequences of the same gene can differ through naturally occurring variations (e.g. polymorphisms), each with its own valid existence. This clone is substantially in agreement with the reference, but a complete review of all prevailing variants is recommended prior to use. [More info](#)

OTI Annotation: This clone was engineered to express the complete ORF with an expression tag. Expression varies depending on the nature of the gene.

Components: The ORF clone is ion-exchange column purified and shipped in a 2D barcoded Matrix tube containing 10ug of transfection-ready, dried plasmid DNA (reconstitute with 100 ul of water).

Reconstitution Method:	<ol style="list-style-type: none">1. Centrifuge at 5,000xg for 5min.2. Carefully open the tube and add 100ul of sterile water to dissolve the DNA.3. Close the tube and incubate for 10 minutes at room temperature.4. Briefly vortex the tube and then do a quick spin (less than 5000xg) to concentrate the liquid at the bottom.5. Store the suspended plasmid at -20°C. The DNA is stable for at least one year from date of shipping when stored at -20°C.
RefSeq:	NM_004653.5
RefSeq Size:	5502 bp
RefSeq ORF:	4620 bp
Locus ID:	8284
UniProt ID:	Q9BY66
Cytogenetics:	Yq11.223
Domains:	ARID, PHD, JmjC, JmjN, zf-C5HC2
Protein Families:	Druggable Genome, Transcription Factors
Gene Summary:	This gene encodes a protein containing zinc finger domains. A short peptide derived from this protein is a minor histocompatibility antigen which can lead to graft rejection of male donor cells in a female recipient. Alternative splicing results in multiple transcript variants. [provided by RefSeq, Apr 2009]