

Product datasheet for **RG218744**

RNF6 (NM_183043) Human Tagged ORF Clone

Product data:

Product Type:	Expression Plasmids
Product Name:	RNF6 (NM_183043) Human Tagged ORF Clone
Tag:	TurboGFP
Symbol:	RNF6
Mammalian Cell Selection:	Neomycin
Vector:	pCMV6-AC-GFP (PS100010)
E. coli Selection:	Ampicillin (100 ug/mL)



[View online »](#)

ORF Nucleotide
Sequence:

>RG218744 representing NM_183043
Red=Cloning site Blue=ORF Green=Tags(s)

TTTTGTAATACGACTCACTATAGGGCGGCCGGAATTCGTCGACTGGATCCGGTACCGAGGAGATCTGCC
GCCCGCATCGCC

ATGAATCAGTCTAGATCGAGATCAGATGGTGGCAGTGAAGAAACCTTACCTCAAGACCATAATCATCATG
AAAATGAGAGAAGATGGCAGCAAGAGCGTCTCCACAGAGAAGAGGCCTATTATCAGTTTATTAATGAAC
CAATGATGAAGATTATCGGCTTATGAGAGACCATAATCTTTTAGCCACCCTGGAGAAATACATCAGAA
GAACTGCAACAGCGGTTAGATGGCGTCAAGGAACAACCTAGCATCTCAGCCTGACTTGAGAGATGGAACGA
ATTACAGAGACTCAGAAGTCCCTAGAGAAAAGTTACATGAAGATTCTTCTAGAATGGTTGAACACCTT
TCGGCGCACAGGAAATGCAACTCGAAGTGGACAAAATGGGAACCAAACTTGAGAGCTGTGAGTCAACA
AACCCGAACAATGGAGAGTTTCGGTTTAGTTGGAAATCCACGTAATCATGAAAATAGAGGATTTGAAA
TTCATGGAGAAGATTATACAGACATTCCTTTTCCAGATAGTAACAGAGATCATACTGCAAAATAGGCAACA
AAGGTCAACTAGTCTGTGGCTAGGCGAACAAGAAGCCAAACCTCAGTGAATTTCAATGGTAGTAGTTCC
AACATTCGAAGGACTAGGCTTGCTTCAAGGGGGCAAAAATCCAGCTGAAGGATCTTTCTCAACATTGGGAA
GGTTAAGAAATGGAATGGGGGAGCAGCTGGCATTCTCGAGCTAACGCTTACGCACTAATTTTCAGTAG
TCACACAAACCAATCAGGTGGTAGTGAACCTCAGGCAAAGGGAGGGGCAACGGTTTGGAGCAGCACATGTT
TGGGAAAATGGGGCTAGAAGTAATGTTACAGTGAGGAATACAAACCAAAGATTAGAGCCAATAAGATTAC
GATCTACTTCCAATAGTCGAAGCCGTTCCCAATTCAGAGACAGAGTGGCACTGTTTATCATAATTTCCCA
AAGGAAAAGTAGACCAGTACAGCAAACCACTAGAAGATCTGTTAGGAGGAGAGGTAGAATCGAGTCTTT
TTAGAGCAAGATAGAGAACGAGAACGCAGAGGTACTGCATATACCCATTCTCTAATTCAGGCTTGTGT
CAAGAATAACAGTAGAAGAAGGAGAAGAATCCAGCAGATCCTCAACTGCTGTACGACGACATCCAACAAT
CACACTGGACCTTCAAGTGAGAAGGATCCGTCTGGAGAAAATAGAGATCGGGATAGTATTGCAAAATAGA
ACTCGATCCAGAGTAGGGCTAGCAGAAAATACAGTCACTATTGAAAGCAATAGTGGGGCTTTCCGCCGAA
CCATTTCTCGTTTAGAGCGGTCAGGTATTCGAACCTATGTTAGTACCATAACAGTTCCTCTTCGTAGGAT
TTCTGAGAATGAGCTTGTGAGCCATCATCAGTGGCTCTTCGGTCAATTTAAGGCAGATCATGACTGGG
TTTGGAGAACTGAGTTCTCTAATGGAGGCCGATTCTGAGTCAGAACTTCAAAGAAATGGCCAGCATTAC
CAGACATGCACTCAGAACTGAGTAACTTAGGTACAGATAACAACAGGAGCCAGCAGGGAAGGTTCCCTC
TCAAGACAGGCAGGCCAAGGAGACAGCACTGAAATGCATGGTAAAACGAGACCACCCAGCCTCATACT
CGAAACAGTGACAGTAGGGGTGGCAGGCAGTTGCGAAATCCAACAATTTAGTTGAAACTGGAACACTAC
CCATTTCTCGCCTTGCTCACTTTTTTTTACTAAATGAAAAGTGATGATGATGATCGAATACGTGGTTAAC
CAAAGAGCAGATTGACAATCTTTCCACCAGGCACTATGAGCATAACAGTATTGATAGTGAAC TAGGTA
ATCTGTAGTGTGTTGATTAAGTACTATGTAACGGAAACAAGCTCAGGCAATTACCTTGATGATGAAT
TTCACATTCATTGATTGACCGATGGCTCTCAGAGAATTGCACTTGTCGGATCTGTCCGACGCTGTTTT
AGGGTCTAACATAGCAAACAATGGG

ACGCGTACGCGGCCGCTCGAG - GFP Tag - GTTTAA

Protein Sequence: >RG218744 representing NM_183043
 Red=Cloning site Green=Tags(s)

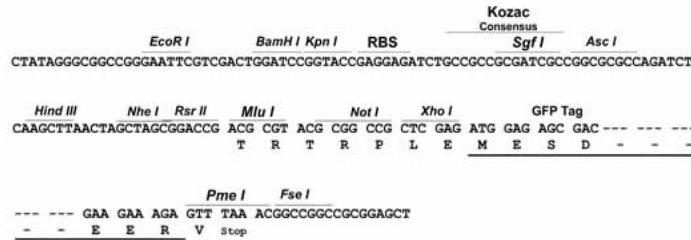
MNQSRSRSDGGSEETLPQDHNHHENERRWQERLHREEAYYQFINELNDEYRLMRDHNLGTPGEITSE
 ELQQRLDGVKEQLASQPDLDGTYRDSEVPRESSHEDSLEWLNTRFTGNATRSGQNGNQTWRAVSRT
 NPNNGEFRFSLEIHVNHENRGFEIHGEDYTDIPLSDSNRDHTANRQQRSTSPVARRTSQTSVNFGSSS
 NIPRTRLASRGQNPAGFSFSTLGRLRNGIGGAAGIPRANASRTNFSSTNQSGGSELRQREGQRFGAAHV
 WENGARSNVTVRNTNQRLEPIRLRSTSNRSRSPIQRQSGTVYHNSQRESRPVQQTTRRSVRRRGRTRVF
 LEQDRERERRGTAYTPFSNSRLVSRITVEEGEESRSSTAVRRHPTITLDLQVRRIRPGENRDRDSIANR
 TRSRVGLAENTVTIESNSGGFRRTISRLESGIRTYVSTITVPLRRISENELVEPSSVALRSILRQIMTG
 FGELSSLMEADSESELQRNGQHLPMHSELNLGTDNNRSQHREGSSQDRQAQGDSTEMHGENETTPHT
 RNSDSRGGRLRNPNNLVETGTLPLRLAHFLLNESDDDDIRIGLTKEQIDNLSTRHYEHNISIDSELGK
 ICSVCISDYVTGNKLRQLPCMEHFHIHCIDRWLSENCTCPICRQPVLGSNIANNG

TRTRPLE - GFP Tag - V

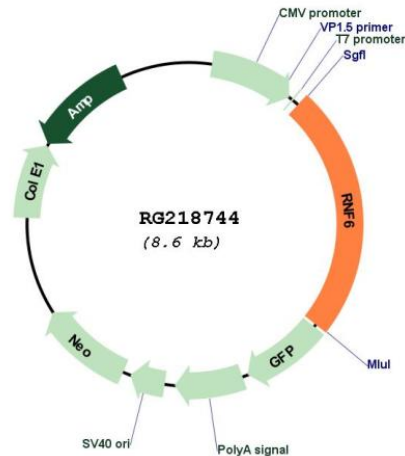
Restriction Sites: SgfI-MluI

Cloning Scheme:

Cloning sites used for ORF Shuttling:



Plasmid Map:



ACCN: NM_183043

ORF Size: 2055 bp

OTI Disclaimer: The molecular sequence of this clone aligns with the gene accession number as a point of reference only. However, individual transcript sequences of the same gene can differ through naturally occurring variations (e.g. polymorphisms), each with its own valid existence. This clone is substantially in agreement with the reference, but a complete review of all prevailing variants is recommended prior to use. [More info](#)

OTI Annotation: This clone was engineered to express the complete ORF with an expression tag. Expression varies depending on the nature of the gene.

Components: The ORF clone is ion-exchange column purified and shipped in a 2D barcoded Matrix tube containing 10ug of transfection-ready, dried plasmid DNA (reconstitute with 100 ul of water).

Reconstitution Method:

1. Centrifuge at 5,000xg for 5min.
2. Carefully open the tube and add 100ul of sterile water to dissolve the DNA.
3. Close the tube and incubate for 10 minutes at room temperature.
4. Briefly vortex the tube and then do a quick spin (less than 5000xg) to concentrate the liquid at the bottom.
5. Store the suspended plasmid at -20°C. The DNA is stable for at least one year from date of shipping when stored at -20°C.

RefSeq: [NM_183043.2](#)

RefSeq Size: 3284 bp

RefSeq ORF: 2058 bp

Locus ID: 6049

UniProt ID: [Q9Y252](#)

Cytogenetics: 13q12.13

Protein Families: Druggable Genome

Gene Summary: The protein encoded by this gene contains a RING-H2 finger motif. Deletions and mutations in this gene were detected in esophageal squamous cell carcinoma (ESCC), suggesting that this protein may be a potential tumor suppressor. Studies of the mouse counterpart suggested a role of this protein in the transcription regulation that controls germinal differentiation. Multiple alternatively spliced transcript variants encoding the same protein are observed. [provided by RefSeq, Jul 2008]