

Product datasheet for **RG218738**

NF2 (NM_016418) Human Tagged ORF Clone

Product data:

Product Type:	Expression Plasmids
Product Name:	NF2 (NM_016418) Human Tagged ORF Clone
Tag:	TurboGFP
Symbol:	NF2
Synonyms:	ACN; BANF; merlin-1; SCH
Mammalian Cell Selection:	Neomycin
Vector:	pCMV6-AC-GFP (PS100010)
E. coli Selection:	Ampicillin (100 ug/mL)



[View online »](#)

ORF Nucleotide Sequence:

>RG218738 representing NM_016418
 Red=Cloning site Blue=ORF Green=Tags(s)

TTTTGTAATACGACTCACTATAGGGCGGCCGGAATTCGTCGACTGGATCCGGTACCGAGGAGATCTGCC
 GCCCGCATCGCC

ATGGCCGGGGCCATCGTTCCCGCATGAGCTTCTCAAGAGGAAGCAACCAAGACGTTACCCG
 TGAGGATCGTCACCATGGACGCCGAGATGGAGTTCAATTGCGAGATGAAGTGAAAGGGAAGGACCTCTT
 TGATTTGGTGTGCCGACTCTGGGGCTCCGAGAAACCTGGTTCTTTGGACTGCAGTACACAATCAAGGAC
 ACAGTGGCTGGCTCAAATGGACAAGAAGGACTGGATCATGATGTTTCAAAGGAAGAACCAGTACCTT
 TTCACTTCTGGCCAAATTTTATCCTGAGAATGCTGAAGAGGAGCTGGTTCAGGAGATCACACAACATTT
 ATTCTTCTACAGGTAAGAAGCAGATTTTAGATGAAAAGATCTACTGCCCTCCTGAGGCTTCTGTGCTC
 CTGGCTTCTACGCCGTCAGGCCAAGTATGGTGACTACGACCCAGTGTTCACAAGCGGGGATTTTGG
 CCCAAGAGGAATTGCTTCCAAAAGGGTAATAAATCTGTATCAGATGACTCCGGAATGTGGGAGGAGAG
 AATTACTGCTTGGTACGCAGAGCACCGAGGCCGAGCCAGGGATGAAGCTGAAATGGAATATCTGAAGATA
 GCTCAGGACCTGGAGATGTACGGTGTGAACTACTTTGCAATCCGGAATAAAAAGGCCACAGAGCTGCTGC
 TTGGAGTGGATGCCCTGGGGCTTACATTTATGACCCTGAGAACAGACTGACCCCAAGATCTCCTTCCC
 GTGGAATGAAATCCGAAACATCTCGTACAGTGACAAGGAGTTTACTATTAACCCTGGATAAGAAAATT
 GATGTCTTCAAGTTAACTCCTCAAAGCTTCGTGTTAATAAGCTGATTCTCCAGCTATGTATCGGGAACC
 ATGATCTATTTATGAGGAGAAGGAAAGCCGATTCTTTGGAAGTTCAGCAGATGAAAGCCCAGGCCAGGGA
 GGAGAAGGCTAGAAAGCAGATGGAGCGCCAGCCCTCGCTCGAGAGAAGCAGATGAGGGAGGAGGCTGAA
 CGCAGCAGGGATGAGTTGGAGAGGAGGCTGCTGCAGATGAAAGAAGAAGCAACAATGGCCAACGAAGCAC
 TGATCGGTCTGAGGAGACAGCTGACCTGTTGGCTGAAAAGGCCAGATCACCGAGGAGGCAAAAAT
 TCTGGCCAGAAGGCCGAGAGGCTGAGCAGGAAATGCAGCGCATCAAGGCCACAGCGATTTCGCACGGAG
 GAGGAGAAGCGCCTGATGGAGCAGAAGGTGCTGGAAGCCGAGGTGCTGGCACTGAAGATGGCTGAGGAGT
 CAGAGAGGAGGGCCAAAGAGGCAGATCAGCTGAAGCAGGACCTGCAGGAAGCACGCGAGGCGAGCGAAG
 AGCCAAGCAGAAGCTCCTGGAGATTGCCACCAAGCCCACGTACCCGCCATGAACCCAATTCAGCACCG
 TTGCCTCCTGACATACCAAGCTTCAACCTCATTGGTGACAGCCTGTCTTTCGACTTCAAAGATACTGACA
 TGAAGCGCTTTCCATGGAGATAGAGAAAGAAAAGTGAATACATGGAAAAGAGCAAGCATCTGCAGGA
 GCAGCTCAATGAACTCAAGACAGAAATCGAGGCCCTTGAAGTGAAGAGAGGGAGACAGCTCTGGATATT
 CTGCACAATGAGAACTCCGACAGGGGTGGCAGCAGCAAGCACAATACCATTAAAAAGCCTCAAGCCCAAG
 GCAGAAGACCTATCTGCATT

ACGCGTACGCGGCCGCTCGAG - GFP Tag - GTTTAA

Protein Sequence:

>RG218738 representing NM_016418
 Red=Cloning site Green=Tags(s)

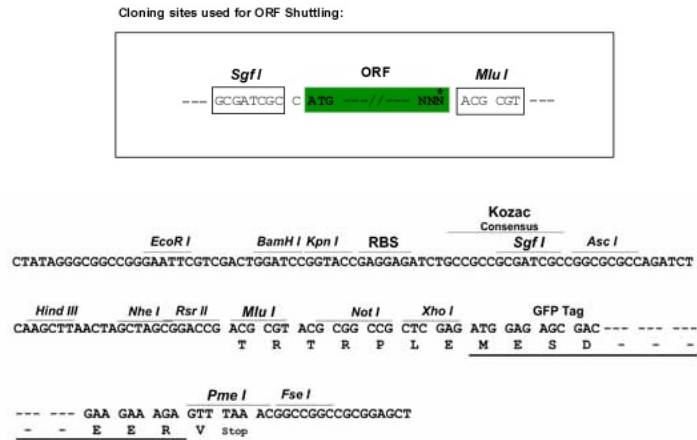
MAGAIASRMSFSSLKRKQPKFTTVRIVTMDAEMEFNCEMKWKGDLDLVCRTLGLRETWFFGLQYTIKD
 TVAWLKMDDKVLVDHVSKEEPVTFHFLAKFYPENAEELVQEITQHLFFLQVKKQILDEKIYCPPEASVL
 LASYAVQAKYGDYDPSVHKRGLAQEELLPKRVINLYQMTPEMWEERITAWYAEHRGRARDEAEMEYLKI
 AQDLEMYGVNYFAIRNKKGTELLLVGDALGLHIYDPENRLTPKISFPWNEIRNISYSDKEFTIKPLDKKI
 DVFKFNSSKLRVNKLIQLCIGNHDLFMRRRKADSLEVQQMKAQAREEKARKQMERQRLAREKQMRREEAE
 RTRDELERRLLQMKEEATMANEALMRSEETADLLAEKAQITEEEAKLLAQKAAEAEQEMQRIRKATAIRTE
 EEKRLMEQKVLAEVLAALKMAEESERRAKEADQLKQDLQEAAREARRAKQKLEIATKPTYPPMNP
 LPPDIPSNLIGDSL SFDKDTDMKRLSMEIEKEKVEYMEKSKHLQEQNLKTEIEALKLKERETALDI
 LHNENSDRGSSKHNTIKKPAQGRRPICL

TRTRPLE - GFP Tag - V

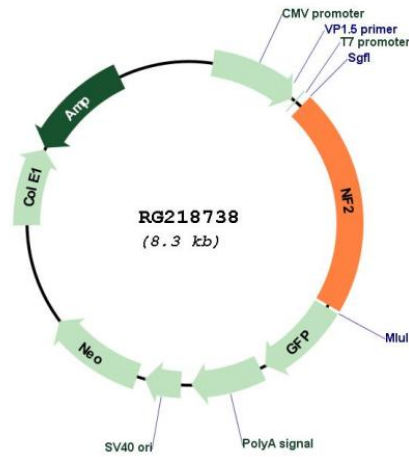
Restriction Sites:

SgfI-MluI

Cloning Scheme:



Plasmid Map:



ACCN: NM_016418

ORF Size: 1770 bp

OTI Disclaimer:	The molecular sequence of this clone aligns with the gene accession number as a point of reference only. However, individual transcript sequences of the same gene can differ through naturally occurring variations (e.g. polymorphisms), each with its own valid existence. This clone is substantially in agreement with the reference, but a complete review of all prevailing variants is recommended prior to use. More info
OTI Annotation:	This clone was engineered to express the complete ORF with an expression tag. Expression varies depending on the nature of the gene.
Components:	The ORF clone is ion-exchange column purified and shipped in a 2D barcoded Matrix tube containing 10ug of transfection-ready, dried plasmid DNA (reconstitute with 100 ul of water).
Reconstitution Method:	<ol style="list-style-type: none">1. Centrifuge at 5,000xg for 5min.2. Carefully open the tube and add 100ul of sterile water to dissolve the DNA.3. Close the tube and incubate for 10 minutes at room temperature.4. Briefly vortex the tube and then do a quick spin (less than 5000xg) to concentrate the liquid at the bottom.5. Store the suspended plasmid at -20°C. The DNA is stable for at least one year from date of shipping when stored at -20°C.
RefSeq:	NM_016418.5 , NP_057502.2
RefSeq Size:	6091 bp
RefSeq ORF:	1773 bp
Locus ID:	4771
UniProt ID:	P35240
Cytogenetics:	22q12.2
Protein Families:	Druggable Genome
Gene Summary:	This gene encodes a protein that is similar to some members of the ERM (ezrin, radixin, moesin) family of proteins that are thought to link cytoskeletal components with proteins in the cell membrane. This gene product has been shown to interact with cell-surface proteins, proteins involved in cytoskeletal dynamics and proteins involved in regulating ion transport. This gene is expressed at high levels during embryonic development; in adults, significant expression is found in Schwann cells, meningeal cells, lens and nerve. Mutations in this gene are associated with neurofibromatosis type II which is characterized by nervous system and skin tumors and ocular abnormalities. Two predominant isoforms and a number of minor isoforms are produced by alternatively spliced transcripts. [provided by RefSeq, Jul 2008]