

Product datasheet for **RG218736**

SLC34A2 (NM_006424) Human Tagged ORF Clone

Product data:

Product Type:	Expression Plasmids
Product Name:	SLC34A2 (NM_006424) Human Tagged ORF Clone
Tag:	TurboGFP
Symbol:	SLC34A2
Synonyms:	NAPI-3B; NAPI-IIb; NPTIIb; PULAM
Mammalian Cell Selection:	Neomycin
Vector:	pCMV6-AC-GFP (PS100010)
E. coli Selection:	Ampicillin (100 ug/mL)



[View online »](#)

ORF Nucleotide Sequence:

>RG218736 representing NM_006424
 Red=Cloning site Blue=ORF Green=Tags(s)

TTTTGTAATACGACTCACTATAGGGCGGCCGGAATTCGTCGACTGGATCCGGTACCGAGGAGATCTGCC
 GCC**GCGATCGCC**

ATGGCTCCCTGGCTGAATTGGGAGATGCCAGCCCAACCCCGATAAGTACCTCGAAGGGGCCGAGGTC
 AGCAGCCCACTGCCCTGATAAAAGCAAAGAGACCAACAAAACAGATAAAGTACCTGAGGCACCTGTAACCAA
 GATTGAACTTCTGCCGTCTACTCCACGGCTACTGATAGATGAGCCCACTGAGGTGGATGACCCCTGG
 AACCTACCACTCTTCAGGACTCGGGGATCAAGTGGTCAGAGAGAGACACCAAAGGGAAGATTCTCTGTT
 TCTTCCAAGGGATTGGGAGATTGATTTTACTTCTCGGATTTCTACTTTTTCTGTGCTCCCTGGATAT
 TCTTAGTAGCGCCTTCCAGCTGGTTGGAGGAAAAATGGCAGGACAGTTCTTCAGCAACAGCTCTATTATG
 TCCAACCTTTTGTGGGGCTGGTATCGGGGTGCTGGTACCCTTGGTGCAGAGCTCCAGCACCTCAA
 CGTCCATCGTTGTCAGCATGGTGTCTCTTATTGCTCACTGTTCCGGCTGCCATCCCCATTATCATGGG
 GGCCAACATTGGAACGTCAATCACCAACTATTGTTGCGCTCATGCAGGTGGGAGATCGGAGTGAGTTC
 AGAAGAGCTTTTGCAGGAGCCACTGTCCATGACTTCTTCAACTGGCTGTCCGTGTTGGTGTCTTGGCCG
 TGGAGGTGGCCACCCATTACCTCGAGATCATAACCCAGCTTATAGTGGAGAGCTTCCACTTCAAGATGG
 AGAAGATGCCCCAGATCTTCTGAAAGTCATCACTAAGCCCTTCAAAAAGCTCATTGTCCAGCTGGATAAA
 AAAGTTATCAGCCAAATTGCAATGAACGATGAAAAAGCGAAAAACAAGAGTCTTGTCAAGATTTGGTGCA
 AAATTTTACCAACAAGACCCAGATTAACGTCACTGTTCCCTCGACTGCTAACTGCACCTCCCCTTCCCT
 CTGTTGGACGGATGGCATCCAAAAGTGGACCATGAAGAATGTGACCTACAAGGAGAACATCGCCAAATGC
 CAGCATACTTTTGAATTTCCACCTCCCGGATCTTGTGTGGCACCATCTTGTCTATACTCTCCCTGC
 TGGTCTCTGTGGTTGCCTGATCATGATTGTCAAGATCCTGGGCTCTGTGCTCAAGGGGAGGTCGCCAC
 TGTTCATCAAGAAGACCATCAACTGATTTCCCTTTCCCTTTGCATGGTTGACTGGCTACCTGGCCATC
 CTCGTCGGGGCAGGCATGACCTTCATCGTACAGAGCAGCTCTGTGTTACGTCCGGCTTGACCCCTGTA
 TTGGAATCGGCGTGATAACCATTGAGAGGGCTTATCCACTCACGCTGGGCTCCAACATCGGCACCACCAC
 CACCGCCATCCTGGCCGCTTAGCCAGCCCTGGCAATGCATTGAGGAGTTCACTCCAGATCGCCCTGTGC
 CACTTTTTCTTCAACATCTCCGGCATCTTGTGTGGTACCCGATCCCGTTCACTCGCTGCCATCCGCA
 TGGCCAAGGGGCTGGGCAACATCTGCAAGTATCGCTGGTTCGCCGTCTTCTACCTGATCATCTTCTT
 CTTCTGATCCCCTGACGGTGTGGCCCTCTCGCTGGCCGCTGGCGGGTGTGGTGGTGTGGGGTT
 CCCGTCGTCTTATCATCATCTGGTACTGTGCCTCCGACTCCTGCAGTCTCGCTGCCACGCGTCTGTC
 CGAAGAACTCCAGAAGTGAAGTTCCTGCCGCTGTGGATGCGCTCGCTGAAGCCCTGGGATGCCGTCGT
 CTCCAAGTTCACCGGCTGCTCCAGATGCGCTGCTGCTGCTGCTGCCGCTGTGCTGCCGCGTGTGCTG
 TTGCTGTGTGGCTGCCCAAGTGTGCCGCTGCAGCAAGTGTGCGAGGACTTGGAGGAGGCGCAGGAGG
 GGCAGGATGTCCCTGTCAAGGCTCTGAGACCTTTGATAACATAACCATTAGCAGAGAGGCTCAGGGTGA
 GGTCCCTGCCTCGGACTCAAAGACCGAATGCACGGCCTTG

AG**CGGACCG**ACGCGTACGCGGCCGCTCGAG - GFP Tag - GTTTAA

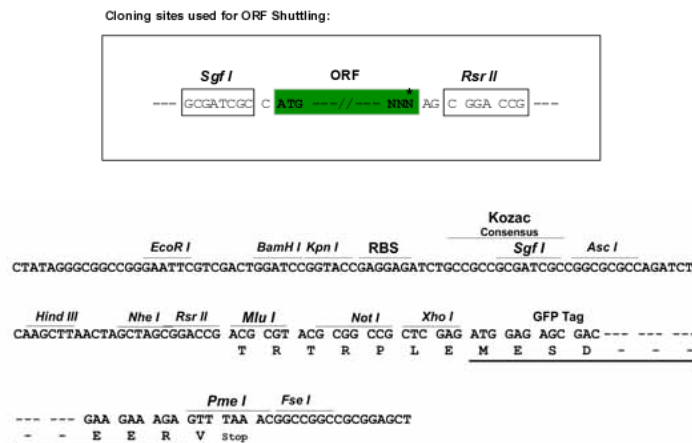
Protein Sequence: >RG218736 representing NM_006424
Red=Cloning site Green=Tags(s)

```
MAPWPPELGAQPNPKYLEGAAGQQPTAPDKSKETNKTDNTEAPVTKIELLPSYSTATLIDEPTEVDDPW
NLPTLQDSGIKWSERDTKGKILCFFQIGIRLILLGLFYFVCSLDILSSAFQLVGGKMAQOFFSNSSIM
SNPLLGLVIGLVTVLVQSSSTSTIVVSMVSSLLTVRAAIIIMGANIGTSITNTIVALMQVGRSEF
RRAFAGATVHDFNWL SVLVLLPVEVATHYLEIITQLIVESFHFKNGEDAPDLLKVITKPFKLIQVLDK
KVISQIAMNDEKAKNKSLVKIWKTFITNKTIQINVTVPSTANCTSPSLCWTGDIQNWTKMNVTYKENIAC
QHIFVNFHLPDLAVGTILLILSLLVLCGCLIMIVKILGSLVKGQVATVIKKTINTDFPFPAWLTGYLAI
LVGAGMTFIVQSSSVFTSALTPLIGIGVITIERAYPLTLGSGNIGTTTTAILAALASPGNALRSSLIQALC
HFFFNISGILLWYPIPFTRLPIRMAGLGNISAKYRWFVYFLIIFFFLIPLTVFGLSLAGWRVLVGVGV
PVVFIILVLCRLQLSRCPVLPKQLQNNFLPLWMSLKPWDVAVSKFTGCFQMRCCCCCRVCCRACC
LLCGCPKCCRCKCCEDLEEAQEQDVPVKAPETFDNITISREAQGEVPASDSKTECTAL
```

SGPTRRRLE - GFP Tag - V

Restriction Sites: SgfI-RsrII

Cloning Scheme:



ACCN: NM_006424

ORF Size: 2070 bp

OTI Disclaimer: The molecular sequence of this clone aligns with the gene accession number as a point of reference only. However, individual transcript sequences of the same gene can differ through naturally occurring variations (e.g. polymorphisms), each with its own valid existence. This clone is substantially in agreement with the reference, but a complete review of all prevailing variants is recommended prior to use. [More info](#)

OTI Annotation: This clone was engineered to express the complete ORF with an expression tag. Expression varies depending on the nature of the gene.

Components: The ORF clone is ion-exchange column purified and shipped in a 2D barcoded Matrix tube containing 10ug of transfection-ready, dried plasmid DNA (reconstitute with 100 ul of water).

Reconstitution Method:

1. Centrifuge at 5,000xg for 5min.
2. Carefully open the tube and add 100ul of sterile water to dissolve the DNA.
3. Close the tube and incubate for 10 minutes at room temperature.
4. Briefly vortex the tube and then do a quick spin (less than 5000xg) to concentrate the liquid at the bottom.
5. Store the suspended plasmid at -20°C. The DNA is stable for at least one year from date of shipping when stored at -20°C.

RefSeq: [NM_006424.2](#)

RefSeq Size: 2280 bp

RefSeq ORF: 2073 bp

Locus ID: 10568

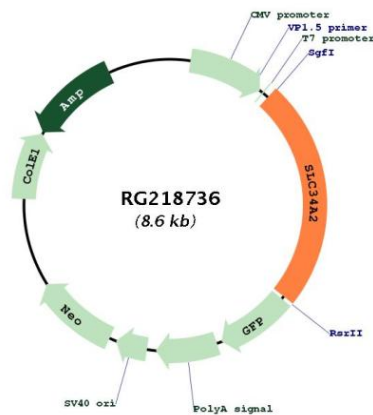
UniProt ID: [O95436](#)

Cytogenetics: 4p15.2

Protein Families: Transmembrane

Gene Summary: The protein encoded by this gene is a pH-sensitive sodium-dependent phosphate transporter. Phosphate uptake is increased at lower pH. Defects in this gene are a cause of pulmonary alveolar microlithiasis. Three transcript variants encoding two different isoforms have been found for this gene. [provided by RefSeq, May 2010]

Product images:



Circular map for RG218736