

Product datasheet for **RG218730**

Phospholipase A2 (PLB1) (NM_153021) Human Tagged ORF Clone

Product data:

Product Type:	Expression Plasmids
Product Name:	Phospholipase A2 (PLB1) (NM_153021) Human Tagged ORF Clone
Tag:	TurboGFP
Symbol:	Phospholipase A2
Synonyms:	PLB; PLB/LIP
Mammalian Cell Selection:	Neomycin
Vector:	pCMV6-AC-GFP (PS100010)
E. coli Selection:	Ampicillin (100 ug/mL)
ORF Nucleotide Sequence:	>RG218730 representing NM_153021 Red=Cloning site Blue=ORF Green=Tags(s)

TTTTGTAATACGACTCACTATAGGGCGGCCGGAATTCGTCGACTGGATCCGGTACCGAGGAGATCTGCC
GCC**CGATCGCC**

ATGGGGCTGCGGCCAGGCATTTTCCTCCTGGAGCTGCTGCTGCTTCTGGGGCAAGGGACCCCTCAGATCC
ATACCTCTCTAGAAAGAGTACATTGGAAGGGCAGCTATGGCCAGAGACCCTGAAGAATTCTCCATTCCC
ATGCAACCCAAATAAATTAGGAGTGAATATGCCTTCTAAATCAGTTCACCTCTCTGAAGCCTTCTGATATT
AAATTTGTGGCAGCCATTGGCAATCTGGAATTCCTCCAGACCCAGGGACGGCGATCTGGAGAAGCAAG
ACTGGACTGAAAGGCCACAGCAGGTGTGCATGGGAGTGATGACAGTCCTTTCAGACATCATCAGATATTT
CAGTCCTTCTGTTCCAATGCCTGTGTGCCACACTGGAAAGAGAGTCATACCCACGATGGTGTGAAGAC
TTGTGGATTCAAGGCTCAAGAAGCTGGTGAGAAACATGAAAGAGAACCTGCAACTTGACTTTCAATTTGACT
GGAAGCTCATCAATGTGTTCTTCAGTAATGCAAGCCAGTGTACCTGTGCCCTCTGCTCAACAGAATGG
GCTTGGCGCGGGCGGCTGGATGAGCTGATGGGGTGTGGACTACCTGCAGCAGGAGGTCCCAGAGCA
TTTGTAACCTGGTGGACCTCTCTGAGGTTGCAGAGGTCTCTCGTCAGTATCACGGCACTGGCTCAGCC
CTGCACCAGAGCCCTGTAATTGCTCAGAGGAGACCACCCGGCTGGCAAGGTGGTGTGATGCAGTGGTCTTA
TCAGGAAGCCTGGAACAGCCTCCTGGCCTCCAGCAGGTACAGTGAGCAGGAGTCCCTCACCGTGGTTTTTC
CAGCCTTTCTTCTATGAGACCACCCATCTCTACACTCGGAGGACCCCGACTCCAGGATCTACCACGC
TGGCCTGGCATCTCTGGAATAGGATGATGGAGCCAGCAGGAGAGAAAGATGAGCCATTGAGTGTAACA
CGGGAGGCCAATGAAGTGTCCCTCTCAGGAGAGCCCTATCTGTTGAGCTACAGAAAACAGCAACTACCTG
ACCAGACTGCAGAAACCCCAAGACAAGCTTGAAGTAAGAGAAGGAGCGGAAATCAGATGTCCTGACAAAAG
ACCCCTCCGATACGGTCCACCTCAGTTCATAGGCTGAAGCCGGCTGACATCAACGTAATTGGAGCCCT
GGTGACTCTCTACGGCAGGCAATGGGGCCGGTCCACACCTGGGAACGTCTTGGACGTCTTGACTCAG
TACCGAGGCTGTCTGGAGCGTCGGCGGAGATGAGAACATCGGCACCGTTACCACCTGGCGAACATCC
TCCGGGAATCAACCCTCCCTGAAGGGCTTCTCTGTTGGCACTGGGAAAGAAACCAGTCTAATGCCTT
CTTAAACCAGGCTGTGGCAGGAGGCCGAGCTGAGGATCTACCTGTCCAGGCCAGGAGGCTGGTGGACCTG



[View online >](#)

ATGAAGAATGACACGAGGATACACTTTCAGGAAGACTGGAAGATAATAACCCTGTTTATAGGCGGCAATG
ACCTCTGTGATTTCTGCAATGATCTGGTCCACTATTCTCCCAGAACTTCACAGACAACATTGGAAGGC
CCTGGACATCCTCCATGCTGAGGTTCTCGGGCATTGTGAACCTGGTGACGGTGCTTGAGATCGTCAAC
CTGAGGGAGCTGTACCAGGAGAAAAAGTCTACTGCCAAGGATGATCCTCAGGTCTCTGTGCCCTGTG
TCCTGAAGTTTGATGATAACTCAACAGAAGTCTGCTACCCTCATCGAATTCACAAGAAGTTTCAGGAGAA
GACCCACCAACTGATTGAGAGTGGGCGATATGACACAAGGGAAGATTTACTGTGGTTGTGCAGCCGTTT
TTTGAAAACGTGGACATGCCAAAGACTCGGAAGGATTGCCTGACAACCTTTTCTCGCTCCTGACTGTT
TCCACTTCAGCAGCAAGTCTCACTCCCAGCAGCCAGTGTCTCTGGAACAATATGCTGGAGCCTGTTGG
CCAGAAGACGACTCGTCATAAGTTTGAAAAACAAGATCAATATCACATGTCCGAACCAGGTCCAGCCGTTT
CTGAGGACCTACAAGAACAGCATGCAGGGTTCATGGGACCTGGCTGCCATGCAGGGACAGAGCCCCTCTG
CCTTGACCCCTACCTCAGTGCATGCCCTGAGACCTGCAGACATCCAAGTTGTGGCTGCTCTGGGGGATTC
TCTGACCCTGGCAATGGAATTGGCTCCAAACCAGACGACCTCCCAGTGTACCACACAGTATCGGGGA
CTGTACATACAGTGCAGGAGGGGACGGCTCCCTGGAGAATGTGACCACCTTACCTAATATCCTTGGGAGT
TTAACAGAAACCTCACAGGCTACGCCGTGGGCACGGGTGATGCCAATGACACGAATGCATTCCTCAATCA
AGCTGTTCCCGGAGCAAAGGCTGAGGATCTTATGAGCCAAGTCCAACTCTGATGCAGAAGATGAAAGAT
GATCATAGAGTAAATTTCCATGAAGACTGGAAGTGCATCACAGTGTGATCGGAGGCAGCGATTTATGTG
ACTACTGCACAGATTCGAATCTGTATTCTGCAGCCAACCTTTGTTGACCATCTCCGCAATGCCTTGGACGT
CCTGCATAGAGAGGTGCCAGAGTCTGGTCAACCTCGTGGACTTCTGAACCCACTATCATGCGGCAG
GTGTTCTGGGAAACCCAGACAAGTGCCAGTGCAGCAGGCCAGCGTTTTGTGTAAGTGCCTTGTGACCC
TGCGGGGAGAACTCCAAAGAGCTAGCCAGGCTGGAGGCCTTCAGCCGAGCCTACCGGAGCAGCATGCGCGA
GCTGGTGGGGTCAGGCCGCTATGACACGCAGGAGGACTTCTGTGGTGTGCAGCCCTTCTCCAGAAC
ATCCAGTCCCTGTCTGGCGGATGGGCTCCCAGATACGTCTTCTTTGCCCCAGACTGCATCCACCCAA
ATCAGAAATCCACTCCAGCTGGCCAGAGCCCTTTGGACCAATATGCTTGAACCAATGGGAGCAAAAC
AGAGACCCTGGACCTGAGAGCAGAGATGCCATCACCTGTCCCAGTCAAGATGAGCCCTTCTGAGAAC
CCTCGGAATAGTAACTACACGTACCCATCAAGCCAGCCATTGAGAACTGGGGCAGTGACTTCTGTGTA
CAGAGTGAAGGCTTCCAATAGTGTTCACACTGTGCCACCAGCTCCGACCAGCAGACATCAAAGTGGT
GGCCGCCCTGGGTGACTCTGACTACAGCAGTGGGAGCTCGACCAAACTCCAGTGCCTACCCACA
TCTTGAGGGGACTCTTGGAGCATTGGAGGGGATGGGAACTTGGAGACTCACACCACACTGCCCAACA
TTCTGAAGAAGTTCAACCCTTACCTCCTGGCTTCTCTACCAGCACCTGGGAGGGGACAGCAGGACTAAA
TGTGGCAGCGGAAGGGCCAGAGCTAGGGACATGCCAGCCAGGCTGGGACCTGGTAGAGCGAATGAAA
AACAGCCCGACATCAACCTGGAGAAAGACTGGAAGCTGGTCAACTCTTATTGGGGTCAACGACTTGT
GTCACTACTGTGAGAATCCGGAGGCCACTTGGCCACGGAATATGTTTCCAGCACATCCAACAGGCCCTGGA
CATCCTCTCTGAGGAGCTCCCAAGGGCTTTCGTCAACGTGGTGGAGGTCATGGAGCTGGCTAGCCTGTAC
CAGGGCCAAGGCGGGAAATGTGCCATGCTGGCAGCTCAGAACTGCACCTTGCCTCAGACACTCGCAAA
GCTCCCTGGAGAAGCAAGAACTGAAGAAAGTGAAGTGAACCTCCAGCATGGCATCTCCAGTTTCTCCTA
CTGGCACCAATACACACAGCGTGAAGGACTTTCGGTGTGGTGCAGCCTTCTTCCAAAACACACTCACC
CCACTGAACGAGAGAGGGGACACTGACCTCACCTTCTTCCGAGGACTGTTTTCACTTCTCAGACCCGG
GGCATGCCGAGATGGCCATCGCACTCTGGAACAACATGCTGGAACCAAGTGGGCCGCAAGACTACCTCAA
CAACTTCAACCACAGCCGAGCCAACTCAAGTCCCCTCTCTGAGAGCCCTTACCTCTACACCCTGCGG
AACAGCCGATTGCTCCCAGACCAGGCTGAAGAAGCCCCGAGGTGCTCTACTGGGCTGTCCCACTGGCAG
CGGGAGTCGGCCTTGTGGTGGGCATCATCGGGACAGTGGTCTGGAGGTGCAGGAGAGGTGGCCGGAGGGA
AGATCCTCCAATGAGCCTGCGCACTGTGCCCTC

ACGGTACGCGGCCGCTCGAG – GFP Tag – GTTAA

Protein Sequence:

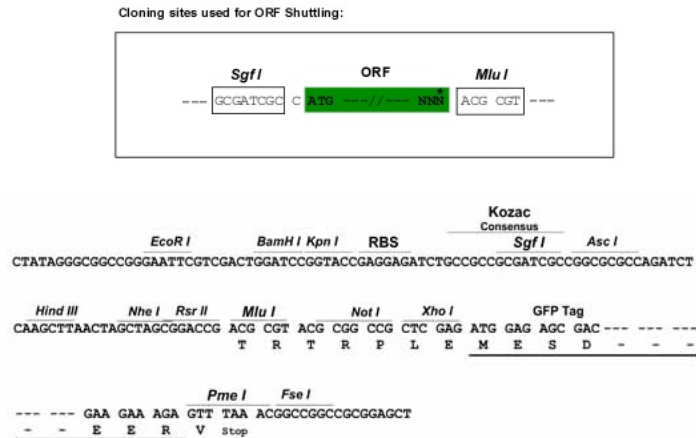
>RG218730 representing NM_153021
 Red=Cloning site Green=Tags(s)

MGLRPGIFLLELLLLLGGQTPQIHSPRKSTLEGQLWPETLKNPFPKPNKLGVMNPKSVHSLKPSDI
 KFVAAIGNLEIPDPDGTGLEKQDWTERRPQQVCMGVMVLSDIIRYFSPSPMPVCHTGKRVIPHDGAED
 LWIQAQELVRNMKENQLDFQFDWKLINVFFSNASQCYLCPAQQNGLAAGGVDELMDVLDYLDLQVEVPRA
 FVNLVDLSEVAEVSRYHGTWLSAPEPCNCSEETTRLAKVVMQWSYQEAWSLLASSRYSEQESFTVVF
 QPFFYETTPSLHSEDPRLQDSTTLAWHLWNRMMEPAGEKDEPLSVKHGRPMKCPSPYLF SYRNSNYL
 TRLQKPQDKLEVREGAEIRCPDKDPSDTPVTSVHRLKPADINVIGALGDSL TAGNGAGSTPGNVLDVLTQ
 YRGLSWSVGGDENIGTVTTLANILREFNPSLKGFSVGTGKETSNAFLNQAVAGGRAEDLPVQARRLVDL
 MKNDTRIHQEDWKIITLFIGGNDLCDFCNLDVHYSQNFQDNIGKALDILHAEPRAFVNLVTVLEIVN
 LRELYQEKKVYCPRMILRSLCPCVLKFDNSTELATLIEFNKKFQEKTHQLIESGRYDTREDFTVVQPF
 FENVDMPKTSEGLPDNSFFAPDCFFSSKSHSRAASALWNNMLEPVGQKTRHKFENKINICPNQVQPF
 LRITYKNSMQGHGTWLPDRDRAPSALHPTSVHALRPADIQVVAALGDSL TAGNGIGSKPDDL PDVTTQYRG
 LSYAGGDGSL ENVTTL PNILREFNRNL TGYAVGTGDANDTNAFLNQAVPGAKAEDLMSQVQTLMQMKMD
 DHRVNFHEDWKVITVLIGGSDLCDYCTDSNLYAANFVDHLRNALDVLHREVPRVNLVDFLNPITMRQ
 VFLGNPDKCPVQASVLCNCVLTRENSQELARLEAFSRAYSRSMREL VSGRYDTQEDFSVVLQPFQFN
 IQLPVLADGLPDT SFFAPDCIHPNQKFHSQ LARALWNNMLEPLGSKTETL DLRAEMPITCPTQNEPFLRT
 PRNSNYTYPIKPAIENWGSDFLCTEWKASNSVPTSVHQLRPADIKVVAALGDSL TTAVGARPNSSDLPT
 SWRGLSWSIGGDGNLEHTHTL PNILKKNFYLLGFSTSTWEGTAGLNVAEAGARARDMPAQAWDLVERMK
 NSPDINLEKDWKLVTLFIGVNDLCHYCNPEAHLATEYVQHIQQALDILSEELPRAFNVVVEVMELASLY
 QGQGGKCAMLAAQNNCTCLRHSQS SLEKQELKKNVWNLQHGISSF SYWHQYTRQEDFAVVVQPFQNTLT
 PLNERGDTDLTFFSEDCFFHSDRGHAEMAIALWNNMLEPVGKRTTSNNFTHSRAKLCPSPEPYLYTLR
 NSRLLPDQAEAEVLYWAVPVAAGVGLVVGIIIGTVVWRCCRGRREDPPMSLRTVAL

TRTRPLE - GFP Tag - V

Restriction Sites:

SgfI-MluI

Cloning Scheme:


ACCN:

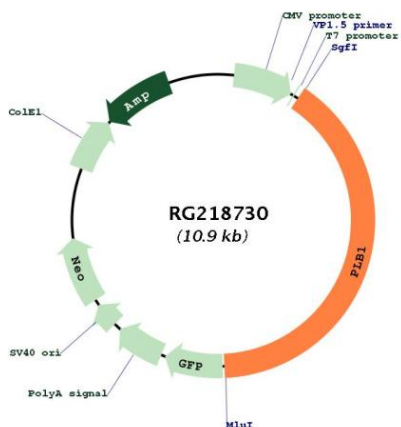
NM_153021

ORF Size:

4374 bp

OTI Disclaimer:	The molecular sequence of this clone aligns with the gene accession number as a point of reference only. However, individual transcript sequences of the same gene can differ through naturally occurring variations (e.g. polymorphisms), each with its own valid existence. This clone is substantially in agreement with the reference, but a complete review of all prevailing variants is recommended prior to use. More info
OTI Annotation:	This clone was engineered to express the complete ORF with an expression tag. Expression varies depending on the nature of the gene.
Components:	The ORF clone is ion-exchange column purified and shipped in a 2D barcoded Matrix tube containing 10ug of transfection-ready, dried plasmid DNA (reconstitute with 100 ul of water).
Reconstitution Method:	<ol style="list-style-type: none">1. Centrifuge at 5,000xg for 5min.2. Carefully open the tube and add 100ul of sterile water to dissolve the DNA.3. Close the tube and incubate for 10 minutes at room temperature.4. Briefly vortex the tube and then do a quick spin (less than 5000xg) to concentrate the liquid at the bottom.5. Store the suspended plasmid at -20°C. The DNA is stable for at least one year from date of shipping when stored at -20°C.
RefSeq:	NM_153021.3 , NP_694566.3
RefSeq Size:	5063 bp
RefSeq ORF:	4377 bp
Locus ID:	151056
UniProt ID:	Q6P1J6
Cytogenetics:	2p23.2
Protein Families:	Transmembrane
Gene Summary:	This gene encodes a membrane-associated phospholipase that displays lysophospholipase and phospholipase A2 activities through removal of sn-1 and sn-2 fatty acids of glycerophospholipids. In addition, it displays lipase and retinyl ester hydrolase activities. The encoded protein is highly conserved and is composed of a large, glycosylated extracellular domain composed of four tandem homologous domains, followed by a hydrophobic segment that anchors the enzyme to the membrane and a short C-terminal cytoplasmic tail. This gene has been identified as a candidate rheumatoid arthritis risk gene. [provided by RefSeq, Jul 2016]

Product images:



Circular map for RG218730