

## Product datasheet for **RG218723**

### Kallikrein 8 (KLK8) (NM\_144507) Human Tagged ORF Clone

#### Product data:

**Product Type:** Expression Plasmids  
**Product Name:** Kallikrein 8 (KLK8) (NM\_144507) Human Tagged ORF Clone  
**Tag:** TurboGFP  
**Symbol:** KLK8  
**Synonyms:** HNP; NP; NRPN; PRSS19; TADG14  
**Mammalian Cell Selection:** Neomycin  
**Vector:** pCMV6-AC-GFP (PS100010)  
**E. coli Selection:** Ampicillin (100 ug/mL)  
**ORF Nucleotide Sequence:** >RG218723 representing NM\_144507  
Red=Cloning site Blue=ORF Green=Tags(s)

TTTTGTAATACGACTCACTATAGGGCGCCGGGAATTCGTCGACTGGATCCGGTACCGAGGAGATCTGCC  
GCC**CGATCGCC**

**ATGGGACGCCCCGACCTCGTGC GGCCAAGACGTGGATGTTCTGCTCTTGCTGGGGGAGCCTGGGCAG**  
**GGCGATTCTGGAGGCCCCCTGGTGTG**

**ACGCGTACGCGGCCGCTCGAG** - GFP Tag - GTTTAA

**Protein Sequence:** >RG218723 representing NM\_144507  
Red=Cloning site Green=Tags(s)

MGRPRPRAAKTWMFLLLLGGAWAGRFWRPPGV

**TRTRPLE** - GFP Tag - V

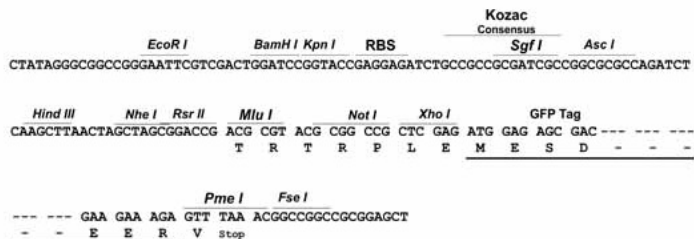
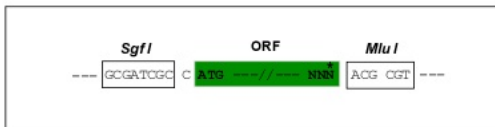
**Restriction Sites:** SgfI-MluI



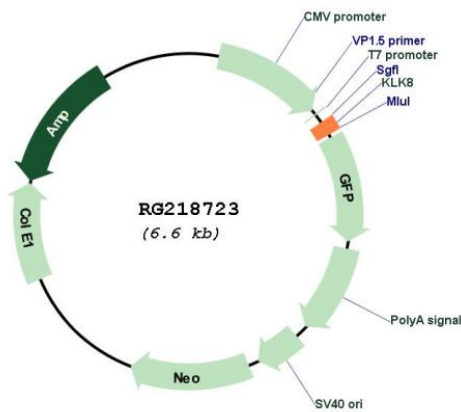
[View online »](#)

Cloning Scheme:

Cloning sites used for ORF Shutting:



Plasmid Map:



ACCN: NM\_144507

ORF Size: 96 bp

<b>OTI Disclaimer:</b>	The molecular sequence of this clone aligns with the gene accession number as a point of reference only. However, individual transcript sequences of the same gene can differ through naturally occurring variations (e.g. polymorphisms), each with its own valid existence. This clone is substantially in agreement with the reference, but a complete review of all prevailing variants is recommended prior to use. <a href="#">More info</a>
<b>OTI Annotation:</b>	This clone was engineered to express the complete ORF with an expression tag. Expression varies depending on the nature of the gene.
<b>Components:</b>	The ORF clone is ion-exchange column purified and shipped in a 2D barcoded Matrix tube containing 10ug of transfection-ready, dried plasmid DNA (reconstitute with 100 ul of water).
<b>Reconstitution Method:</b>	<ol style="list-style-type: none"><li>1. Centrifuge at 5,000xg for 5min.</li><li>2. Carefully open the tube and add 100ul of sterile water to dissolve the DNA.</li><li>3. Close the tube and incubate for 10 minutes at room temperature.</li><li>4. Briefly vortex the tube and then do a quick spin (less than 5000xg) to concentrate the liquid at the bottom.</li><li>5. Store the suspended plasmid at -20°C. The DNA is stable for at least one year from date of shipping when stored at -20°C.</li></ol>
<b>RefSeq:</b>	<a href="#">NM_144507.2</a>
<b>RefSeq Size:</b>	456 bp
<b>RefSeq ORF:</b>	99 bp
<b>Locus ID:</b>	11202
<b>UniProt ID:</b>	<a href="#">O60259</a>
<b>Cytogenetics:</b>	19q13.41
<b>Protein Families:</b>	Druggable Genome, Secreted Protein, Transmembrane
<b>Gene Summary:</b>	Kallikreins are a subgroup of serine proteases having diverse physiological functions. Growing evidence suggests that many kallikreins are implicated in carcinogenesis and some have potential as novel cancer and other disease biomarkers. This gene is one of the fifteen kallikrein subfamily members located in tandem in a gene cluster on chromosome 19. The encoded protein may be involved in proteolytic cascade in the skin and may serve as a biomarker for ovarian cancer. Alternate splicing of this gene results in multiple transcript variants encoding different isoforms. [provided by RefSeq, Jul 2013]