

Product datasheet for **RG218722**

DMRTA2 (NM_032110) Human Tagged ORF Clone

Product data:

Product Type:	Expression Plasmids
Product Name:	DMRTA2 (NM_032110) Human Tagged ORF Clone
Tag:	TurboGFP
Symbol:	DMRTA2
Mammalian Cell Selection:	Neomycin
Vector:	pCMV6-AC-GFP (PS100010)
E. coli Selection:	Ampicillin (100 ug/mL)



[View online »](#)

ORF Nucleotide Sequence:

>RG218722 representing NM_032110
 Red=Cloning site Blue=ORF Green=Tags(s)

TTTTGTAATACGACTCACTATAGGGCGGCCGGGAATTCGTCGACTGGATCCGGTACCGAGGAGATCTGCC
 GCC**CGGATCGCC**

ATGGAGCTGCGCTCGGAGCTGCCAGCGTGCCCGCGCGGACGCGGGCGGCAACAGCGACGGGGC
 CGCTGTGGCGTCGGTGGCGTCGGTGGCGCAGCCGCGCGGCCGCTGCATCGCTACCGGTGAGCGTGCC
 AGCGCGCTTGTGCGGGGGCCGCCACTGTTGCTGCGGGCAGCCGAGAAGTACCCGCGACCCCAAGTGC
 GCGCGCTGTCGAACCATGGCGTGGTGTGCGCCCTCAAGGGCCACAAACGCTACTGTCGCTGGAAGGACT
 GCCTGTGCGCCAAGTGCACGCTCATCGCGGAGCGCCAGCGTGTATGGCGGCGCAGGTGGCGCTGCGCAG
 GCAGCAGGCGCAGGAGGAGAACGAGGCGCGGAGCTGCAGCTGCTCTACGGCACTGCCGAGGGGCTGGCG
 CTGGCCCGCCCAACGGCATCATCCCCGAGGCCCGCTACGAGGTCTTCGGTTCAGTGTGCGCCGCCG
 ACGGGCGGGGACCTGGAGCGGGAGCGCCCGGGGACCGGAGGCGGAGCAGCTGGCGCAGGGGGCTCAGA
 GGCCAAGTTGCAGAAGTTTGACCTGTTTCTAAGACGCTGCTGCAGGCAGGCCCGCCGGGACGCCGCTG
 CGCCCGCGGTGAAGCCCTTATACCCGACGGCGCAGACTCGGGGCCCGGACGTCGTCCCAGAGGTGC
 GGCCCGGCTCAGGCTCGGAGAACGGCGATGGCGAGTCTTTTCTGGTTCGCCCTAGCTCGGGCCTCCAA
 AGAGGCAGGTGGCAGCTGCCAGGCAGCGCTGGCCCTGGCGGCGGCGGAGGAGACAGCCCGGCTCC
 GCTAGCCCTCTGGGCTCTGAATCCGGTTCAGAGGCTGACAAAGAAGAGGGTGAGGCCGCGCCGGCGCCAG
 GGCTGGGCGGAGGCTCGGGTCCACGGCAGCGGACGCCGCTGGATATCTTGACACGCGTGTCCAGGCCA
 CCGGCGAGGCGTCTGGAGCTGGTGTTCAGGGCTGCGGCGGCGACGTGGTGCAGGCCATCGAGCAGGTG
 CTGAACCACCACGCTGGGGGCTGGCGGCCGCTGGCCCTGCGGCGCCCCAGATAAGGCCCGCGTGG
 GTGCTGCAGCAGCTGCAGACGACGCGTGCCAGCCGCTGACGCGCGCCGCGCCGCGCCGCGCCGCGCG
 CGGGGGGCTGGGCTGCCTGCGCCGCTGCAGGCGGGGCCCGCGCACCTCCGCACCACAGACCCTTGCTG
 GCCGCGCCATGGCGCTGGGGCTGGGCTCGCTGAGCAGCCGCTCGGCCTTCTCGCGCTGCAGCCCA
 ACGCCAGTCACTTCGGTCCGACGCGGGCGCTACCCGCTGGGCGCGCCGCTCGGCCTCAGCCCCCTGCG
 CCTGGCTACTCCGCGGCGGCGGCACAGCCGCGGTCTGGCCTTTCATGGCGCCCTACTCCACTGCCGGC
 TTGGTGCCACGCTCGGCTTCCGCCACCCATGGACTACGCTTTAGCGATCTCATGCGTACCAGCTCGG
 CCGCCGCTGCTGCGGCGGTGCACAAGGAGCCGACCTACGGCGGCGCCTGTACGGCCTATGGTCAACGG
 CGCTCCGAGAAGCAG

AG**CGGACCG**ACGCGTACGCGGCCGCTCGAG – GFP Tag – GTTTAA

Protein Sequence:

>RG218722 representing NM_032110
 Red=Cloning site Green=Tags(s)

MELRSELPSVPGAATAAAATATGPPVASVASVAAAAAASLPVSVAGLLRGPPLLLRAAEKYPRTPKC
 ARCRNHGVVSALKGHKRYCRWKDCLCAKCTLIAERQVRMAAQVALRRQQAQEENEARELQLLYGTAEGLA
 LAAANGIIPRPAYEVFGSVCAADGGGPGAGAPAGTGGGAAGAGGSEAKLQKFDLFPKTLQLQAGRPGSPL
 PPPVKPLSPDGADSGPGTSSPEVRPGSGSENGDESFSGSPLARASKEAGGSCPGSAGPGGGGEEDSPGS
 ASPLGSESGSEADKEEGEAAAPAGLGGGSGPRQRTPLDILTRVFPGHRRGVLELVLQCGCGDVVQAIQV
 LNHHRGGLAAGLPAAPPDKAAVGA AAAAADDWPSRVDA AAAAAAAGGPGLPAPLQAGPAAPPHRPLL
 AGAMAPGALGSLSSRSFSPNQPNASHFGADAGAYPLGAPLGLSPLRLAYSAAAAHSRGLAFMAPYSTAG
 LVPTLGFRRPMDYAFSDLMRDRSAAAAAAVHKEPTYGGGLYGPVMNGAPEKQ

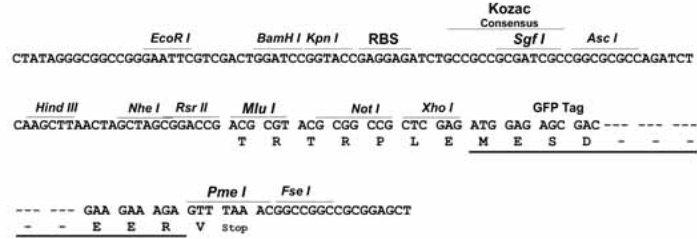
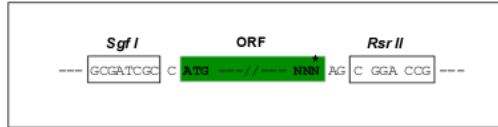
SGP**TRRRLE** – GFP Tag – V

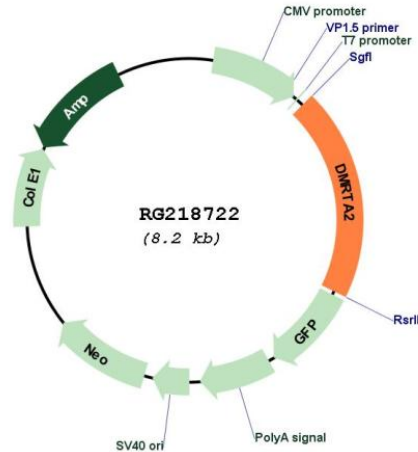
Restriction Sites:

Sgfl-RsrII

Cloning Scheme:

Cloning sites used for ORF Shuttling:



Plasmid Map:


ACCN: NM_032110

ORF Size: 1626 bp

OTI Disclaimer: The molecular sequence of this clone aligns with the gene accession number as a point of reference only. However, individual transcript sequences of the same gene can differ through naturally occurring variations (e.g. polymorphisms), each with its own valid existence. This clone is substantially in agreement with the reference, but a complete review of all prevailing variants is recommended prior to use. [More info](#)

OTI Annotation: This clone was engineered to express the complete ORF with an expression tag. Expression varies depending on the nature of the gene.

Components: The ORF clone is ion-exchange column purified and shipped in a 2D barcoded Matrix tube containing 10ug of transfection-ready, dried plasmid DNA (reconstitute with 100 ul of water).

Reconstitution Method:

1. Centrifuge at 5,000xg for 5min.
2. Carefully open the tube and add 100ul of sterile water to dissolve the DNA.
3. Close the tube and incubate for 10 minutes at room temperature.
4. Briefly vortex the tube and then do a quick spin (less than 5000xg) to concentrate the liquid at the bottom.
5. Store the suspended plasmid at -20°C. The DNA is stable for at least one year from date of shipping when stored at -20°C.

RefSeq: [NM_032110.3](#)

RefSeq Size: 3114 bp

RefSeq ORF: 1629 bp

Locus ID: 63950

UniProt ID: [Q96SC8](#)

Cytogenetics: 1p32.3

Gene Summary: May be involved in sexual development.[UniProtKB/Swiss-Prot Function]