

Product datasheet for **RG218712**

RNF190 (MARCH10) (NM_001100875) Human Tagged ORF Clone

Product data:

Product Type:	Expression Plasmids
Product Name:	RNF190 (MARCH10) (NM_001100875) Human Tagged ORF Clone
Tag:	TurboGFP
Symbol:	MARCHF10
Synonyms:	MARCH-X; MARCH10; RNF190
Mammalian Cell Selection:	Neomycin
Vector:	pCMV6-AC-GFP (PS100010)
E. coli Selection:	Ampicillin (100 ug/mL)



[View online »](#)

ORF Nucleotide Sequence:

>RG218712 representing NM_001100875
 Red=Cloning site Blue=ORF Green=Tags(s)

TTTTGTAATACGACTCACTATAGGGCGGCCGGAATTCGTCGACTGGATCCGGTACCGAGGAGATCTGCC
 GCC**CGCATCGCC**

ATGTTGCATGACGCAAGGGACAGGCAGAAAGTTCTTCAGCGATGTTCAAGTATCTGCGGGACATGCAGCATA
 AGGTGGACTCTGAGTATCAGGCTTGTCTGAGACGACAGGAATATAGAAGAGACCCAAATGAGAAGAAACG
 CGATCAGTTTTGGGGCAAGAGACAAGTTTTGAGAGATCCCGTTTTCTAGCAGGTCATCTTCCAAACAG
 AGTTCTAGTGAGGAGGATGCTCTAACTGAACCAAGGTCATCTATCAAGATATCTGCATTTAAGTGTGACT
 CCAAACCTCCAGCAATTGACCAAACATCAGTCAAGCAGAAACATAAAAGTACCATGACTGTAAGGAAAGC
 AGAGAAAGTGGACCCAGCGAACCTCTCCAGCAGACCAAGCACAATGGTTTTATTAAGAAAGAGGAAG
 CCAAACCTGAGGAGATTTACAGTCAAGCCAGAATCGCACAGCCGAGAGCATCTGGGGACAGAAGCAGAC
 AGAAACAGCAGTGGCCTGCAAAGGTGCCGGTCCAGGGGAGCAGATCAAGTAGTTCAACAAGAAGGCCCT
 GATGTGTAACACTAAGCTGAAGAGGCCAAATCAAGAGAGAAGAACTTGGTCCCATCGTCACAGCCAATG
 ACTGAGAACGCCCTGATAGAGCCAAAAAGGAGACCCGAGTGCCTTCCCAGAGTGAGCTGCATCCAG
 CCCTGTCCAGGCCTTCCAAGGAAAAAATAGTCCCTCAAGTATTGAGTGAGTTCTCGGGGCCACCACTCAC
 ACCCACCCTGTAGGAGGGCCAAGAAAGGCATCATTTAGGTTCCGAGATGAAGACTTTTATTCCATTTTG
 TCATTGAACAGCAGAAGAGAAAGCGATGACACTGAAGAGGAAACCCAGTCTGAAGAATGTCTGTGGGTTG
 GTGTGCGCTCACCTGTTCTCCTCCCATCACAAAAGAAGTAGATTTGGGGGGACATCGACCCCTCAGGC
 CAAAAATAAAATTTTGAAGAAATGCTGAAAATTCAGAGGTCATTCTCAAGAAGAAGTAGCCCAAGT
 CATGGCTCATTGAGAATAAGCAATGCAATGGAGCCAGCAACAGAGCGCCTTCTGCTGGGCAAAGGTTGT
 CCAAGACCCCGGGCTGCCTGATAGGGAATCTGCTACAGAGAAGGACAGAGGTGGCAGTAAAAATGCGAA
 AAAGAGCCCTCTTTCGTGGGACACCAAATCCGAGCCAGACAAGAGGTTGGTGTCAATGCTGAAAAATGTA
 TGGAGTGATTGATTTCTGTGGAACATAGGCCTGGCACCCATGATTCTGAAGGATACTGGAAGACTATT
 TAAACAGTTCTCAAAATCTCTTACTACTTTATTTCTGGCAGACCAATATCTCCAAGATCATCAGTGAA
 TTCATCTATAACCCTCTGCATCATTATGATTCTGCTCTGAGAGATGATTTCCAGTAGACTTGTCA
 ATGTCATCGACTTCAGTTCACAGCTCAGACTCAGAGGGAAACTCAGGGTTTCATGTTGCCAACCACTGT
 CTCCCATTAGAAATAGGACTCCATTTGCCAGTCCGAAAACCAATAATTTTCCCAGTAAACAGTGCACA
 CGAATTTGCTGTCAGGGAAGCAGAAGATACTACTTTAACAAGCCAGCCTCAGGGGGCTCCACTATATACA
 GATCTCTTACTAAATCCACAGGGCAATTTGTCCTTAGTGGATTCTCCAGCTCCTCTCCATCAAGAAATGA
 ACTCAGAAGGCCATTTGCATGTGTCTGGGTCTCTGCAAGAAAATACACCATTTACTTTCTTTCAGTGTCT
 TCATTTCCCAAATCAAAATGATAATGGGAGCAGGATGGCAGCCTCTGGTTTCACAGATGAAAAGGAAACC
 AGTAAGATAAAGGCAGACCCCTGAGAAAATCAAGAAATGCAAGAAAGTCTCCTGGAGGAGGACTCCGAGG
 AGGAGGGAGACTTGTGTGCGATCTGTCAGATAGCCGGGGTTCCCAAGCAACCCCTCTGGAGCCTTG
 CGGCTGTGTGGGAAGCCTGCAGTTTGTTCATCAAGAGTGCCTGAAAAAGTGGCTGAAAGTAAAAATAACA
 TCAGGAGCAGATCTTGGTGCCGTGAAGACCTGTGAGATGTGAAGCAAGGCCTGCTGGTTGACCTGGGTG
 ACTTTAACATGATTGAGTTCTACCAGAAGCACCAGCAATCTCAGGCACAAAACGAGCTGATGAATTCAGG
 CTTGTACCTGGTGTGCTGCTTACCTCTATGAGCAGAGGTTTGCAGAACTCATGAGGCTCAACCACAAC
 CAGGTGGAAGAGAGAGGTTGTCAAGAAATACCACAACCCAGAACAGAGGAAAATGAAAATTCGGAGT
 TGGGAGATGAAAATGAAGGCAGCATTTCTCAAAGCCAGGTCGTC

ACGCGTACGCGGCCGCTCGAG – GFP Tag – GTTTAA

Protein Sequence: >RG218712 representing NM_001100875
 Red=Cloning site Green=Tags(s)

```

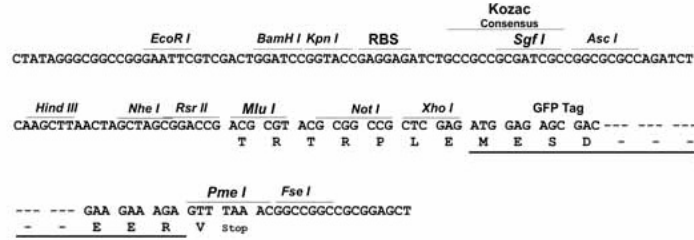
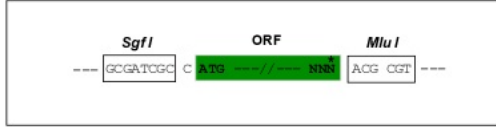
MLHDARDRQKFFSDVQYLQDMQHKVDSEYQAQLRRQEYRRDPNEKKRDQFWGQETSFERSRFSSRSSKQ
SSSEEDALTEPRSSIKISAFKCDKSLPAIDQTSVKQKHKSTMTVRKAEKVDPSESPADQAPMVLLRKRK
PNLRRFTVSPESHSPRASGDRSRQKQWPAPKVPVPRGADQVVQQEGLMCNTKLRPNQERRNLVPSSQPM
TENAPDRAKKGDPSPAPSQSELHPALSQAFQGNKSPQVLESEFSGPPLTPTTVGGPRKASFRFRDEDFYSIL
SLNSRRESDDTEETQSEELWVGVRSPCSPSHHKRSRFGGTSTPQAKNKNFEENAENCRGHSSRRSEPS
HGSLRISNAMEPATERPSAGQRLSQDPGLPDRESATEKDRGGSSENAKKSPLSWDTKSEPRQEVGVNAENV
WSDCISVEHRPGTHDSEGYWKDYLNSSQNSLDYFISGRPISPRSSVNSSYNPPASFMHSALRDDIPVDSL
MSSTSVHSSDSEGNMGFHCQPLSPIRNRTPFASAENHNYFPVNSAHEFAVREAEDTTLTSQPQGAPLYT
DLLLLNPQGNLSLVSSSSSPSRMNSEGHLHVSGSLQENTPFTFFAVSHFPNQNDNGSRMAASGFTDEKET
SKIKADPEKLLKQLLEEDSEEEGDLCRICQIAGGSPSNLLEPCGCVGSLQFVHQECLKKWLKVKIT
SGADLGAVKTCMCKQGLLVLDGDFNMIEFYQKHQQSQAQNELMNSGLYLVLHLHLYEQRFAELMRLNHN
QVERERLSRNYQPRTTEENSELGDGNEGSISQSQVV
  
```

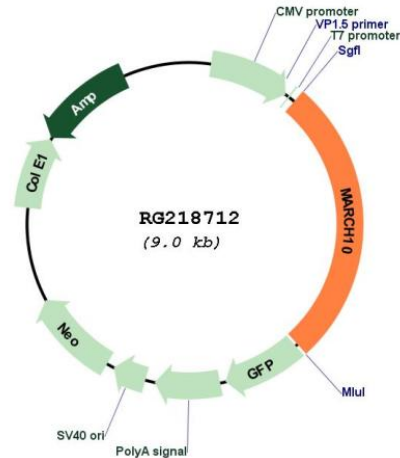
TRTRPLE - GFP Tag - V

Restriction Sites: Sgfl-MluI

Cloning Scheme:

Cloning sites used for ORF Shutting:



Plasmid Map:


ACCN: NM_001100875

ORF Size: 2424 bp

OTI Disclaimer: The molecular sequence of this clone aligns with the gene accession number as a point of reference only. However, individual transcript sequences of the same gene can differ through naturally occurring variations (e.g. polymorphisms), each with its own valid existence. This clone is substantially in agreement with the reference, but a complete review of all prevailing variants is recommended prior to use. [More info](#)

OTI Annotation: This clone was engineered to express the complete ORF with an expression tag. Expression varies depending on the nature of the gene.

Components: The ORF clone is ion-exchange column purified and shipped in a 2D barcoded Matrix tube containing 10ug of transfection-ready, dried plasmid DNA (reconstitute with 100 ul of water).

Reconstitution Method:

1. Centrifuge at 5,000xg for 5min.
2. Carefully open the tube and add 100ul of sterile water to dissolve the DNA.
3. Close the tube and incubate for 10 minutes at room temperature.
4. Briefly vortex the tube and then do a quick spin (less than 5000xg) to concentrate the liquid at the bottom.
5. Store the suspended plasmid at -20°C. The DNA is stable for at least one year from date of shipping when stored at -20°C.

RefSeq: [NM_001100875.3](#)

RefSeq Size: 3069 bp

RefSeq ORF: 2427 bp

Locus ID: 162333

UniProt ID: [Q8NA82](#)

Cytogenetics: 17q23.2

Gene Summary:

MARCH10 is a member of the MARCH family of membrane-bound E3 ubiquitin ligases (EC 6.3.2.19). MARCH enzymes add ubiquitin (see MIM 191339) to target lysines in substrate proteins, thereby signaling their vesicular transport between membrane compartments (Morokuma et al., 2007 [PubMed 17604280]).[supplied by OMIM, Apr 2010]