

Product datasheet for **RG218705**

PADI6 (NM_207421) Human Tagged ORF Clone

Product data:

Product Type:	Expression Plasmids
Product Name:	PADI6 (NM_207421) Human Tagged ORF Clone
Tag:	TurboGFP
Symbol:	PADI6
Synonyms:	hPADVI; PREMBL2
Mammalian Cell Selection:	Neomycin
Vector:	pCMV6-AC-GFP (PS100010)
E. coli Selection:	Ampicillin (100 ug/mL)



[View online »](#)

ORF Nucleotide Sequence:

>RG218705 representing NM_207421
 Red=Cloning site Blue=ORF Green=Tags(s)

TTTTGTAATACGACTCACTATAGGGCGGCCGGGAATTCGTCGACTGGATCCGGTACCGAGGAGATCTGCC
 GCC**CGGATCGCC**

ATGGTCAGCGTGGAGGGCCGAGCCATGTCCTTCCAGAGTATCATCCACCTGTCCCTGGACAGCCCTGTCC
 ATGCCGTTTGTGTGTTGGGCACAGAAATCTGCTGGATCTCAGCGGGTGTGCCCCCAAGAGTGCCAGTG
 CTTACCATCCATGGCTCTGGGAGGGTCTTGATCGATGTGGCCAACACGGTGATTCTGAGAAGGAGGAC
 GCCACCATCTGGTGGCCCTGTCTGATCCACGTACGCCACAGTGAAGATGACATCGCCAGCCCTTCCG
 TGGATGCGGATAAGGTCTCGGTACATACTATGGGCCAACGAGGATGCCCCCGTGGGCACAGCTGTGCT
 GTACCTCACTGGCATTGAGGTCTCTAGAGGTAGACATCTACCGCAATGGGCAAGTTGAGATGTCAAGT
 GACAAACAGGCTAAGAAAAATGGATCTGGGGTCCAGCGGTTGGGGTCCATCTGCTTGTGAATTGCA
 ACCCTGCTGATGTGGCCAGCAACTTGAGGACAAGAAAACCAAGAAAGTATCTTTTCAGAGGAAATAAC
 GAATCTGTCCAGATGACTCTGAATGTCCAAGGCCCCAGCTGTATCTTAAAGAAATATCGGCTAGTCCTC
 CATACTCCAAGGAAGAGTCGAAGAAGGCGAGAGTCTACTGGCCCCAAAAGACAACCTCCAGTACCTTTG
 AGTTGGTGTGGGGCCGACCAGCACGCCTATACCTTGGCCCTCCTCGGGAACCACTTGAAGGAGACTTT
 CTACGTTGAAGCTATAGCATTCCCATCTGCCGAATTCTCAGGCCTCATCTCCTACTCTGTGTCCCTGGTG
 GAGGAGTCTCAAGACCCGTCAATTCAGAGACTGTGCTGTACAAAGACACGGTGGTGTCCCGGGTGGCTC
 CCTGTGTCTTCATTCCCTGTACCCAGGTGCCTCTGGAGGTTTACCTGTGCAGGGAGCTGCAGCTGCAGGG
 TTTTGTGGACACAGTGACGAAGCTGAGTGAGAAGACAAACAGCCAGGTGGCATCTGTCTATGAGGACCCC
 AACCGCTGGGCAGGTGGCTCCAGGATGAGATGGCCTTCTGCTACACCCAGGCTCCCAACAAGACAACGT
 CTTGATCCTCGACACACCTCAGGCCCGCGATCTCGATGAGTCCCATGAAGTACTCACTGAGCCCTGG
 TATTGGCTACATGATCCAGGACACTGAGGACCATAAAGTGGCCAGCATGGATTCCATTGGGAACCTGATG
 GTGTCCCACTGTCAAGGTCCAAGGAAAGAGTACCCGCTGGGCAGAGTCTCATTGGCAGCAGCTTTT
 ACCCCAGTGACAGAGGGCCGGCCATGAGTAAGACCCTCCGAGACTTCTCTATGCCAGCAGGTCCAAGC
 GCCGGTGGAGCTCTACTCAGATTGGCTAATGACTGGCCACGTGGATGAGTTCATGTGCTCCATCCCCACA
 GATGACAAGAATGAGGGCAAAAAGGGCTTCTGCTGCTCCTGGCCAGCCCAGTGCCTGCTATAAACTGT
 TCCGAGAGAACCAGAAGGAAGGCTATGGCGACGCTCTTCTGTTTGTGATGAGCTTAGAGCAGATCAGCTCCT
 GTCTAATGGAAGGAAGCCAAAACCATCGACCAACTTCTGGCTGATGAAAGCCTGAAGAAGCAGAATGAA
 TACGTGGAGAAGTGCATTACCTGAACCGTGACATCCTGAAGACGGAGCTGGGCCTGGTGAACAGGACA
 TCATCGAGATTCCCCAGCTGTTCTGCTTGAGAAGCTGACTAACATCCCCCTCTGACCAGCAGCCCAAGAG
 GTCCTTTGCGAGGCCATACTTCCCTGACCTGTTGCGGATGATTGTGATGGCAAGAACCTGGGGATCCCC
 AAGCCTTTTGGGCCCAAATCAAGGGGACCTGCTGCCTGGAAGAAAAGATTTGCTGCTTGTGGAGCCCC
 TGGGCTTCAAGTGCACCTTCATCAATGACTTTGACTGTTACCTGACAGAGGTCGGAGACATCTGTGCCTG
 TGCCAACATCCGCCGGGTGCCCTTGCCTTCAAATGGTGAAGATGGTACCT

ACGCGTACGCGGCCGCTCGAG - GFP Tag - GTTTAA

Protein Sequence: >RG218705 representing NM_207421
 Red=Cloning site Green=Tags(s)

MVSVEGRAMSFQSIHLSLSDSPVHAVCVLGTICLDLSGCAPQKCQCFTIHGSGRVLIDVANTVISEKED
 ATIWWPLSDPTYATVKMTSPSPSVDADKVSVTYYGPNEDAPVGTAVLYLTGIEVSLEVDIYRNGQVEMSS
 DKQAKKKWIWGPSWGAILLVNCPADVGQQLLEDKTKKVFIFSEEITNLSQMTLNVOGPPSCILKKYRLVL
 HTSKEESKKARVYWPQKDNSSTFELVLGPDQHAYTLALLGNHLKETFFYVEAIAFPSAEFSGLISYSVSLV
 EESQDPSIPETVLYKDTVVFVRVAPCVFIPCTQVPLEVYLCRELQLQGFVDTVTKLSEKSNSQVASVYEDP
 NRLGRWLQDEMAFCYTQAPHKTTSLILDTPQAADLDEFPMKYSLSPGIGYMIQDTEHDKVASMDSIGNLM
 VSPPVKVQGKEYPLGRVLIGSSFYPSAEGRAMSKTLRDFLYAQVQAPVELYSDWLMTGHVDEFMCSIPT
 DDKNEGKKGFLLLASPSACYKLFRENQKEGYGDALLFDELADQLLSNGREAKTIDQLLADESLKKQNE
 YVEKCIHLNRDILKTELGLVEQDIIIEIPQLFCLEKLTNIPSDQQPKRSFARPYFPDLLRMIVMGKNLGI
 PPFQIKGTCCLEEKICLLEPLGFKCTFINDFCYLTEVGDICACANIRRVPAFKWVKMVP

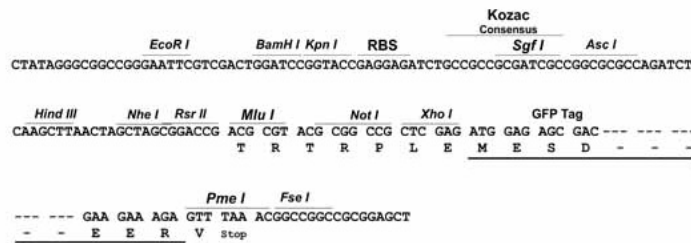
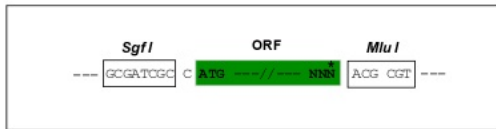
TRTRPLE - GFP Tag - V

Restriction Sites:

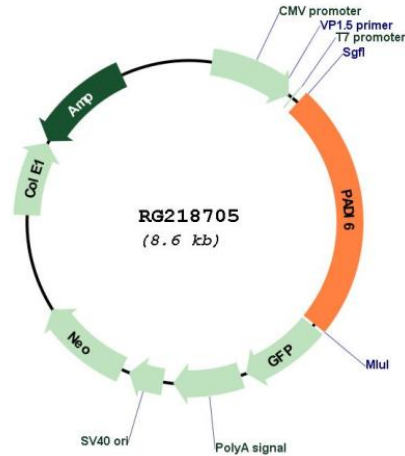
Sgfl-MluI

Cloning Scheme:

Cloning sites used for ORF Shuttling:



Plasmid Map:



ACCN: NM_207421

ORF Size: 2082 bp

OTI Disclaimer: Due to the inherent nature of this plasmid, standard methods to replicate additional amounts of DNA in *E. coli* are highly likely to result in mutations and/or rearrangements. Therefore, OriGene does not guarantee the capability to replicate this plasmid DNA. Additional amounts of DNA can be purchased from OriGene with batch-specific, full-sequence verification at a reduced cost. Please contact our customer care team at custsupport@origene.com or by calling 301.340.3188 option 3 for pricing and delivery.

The molecular sequence of this clone aligns with the gene accession number as a point of reference only. However, individual transcript sequences of the same gene can differ through naturally occurring variations (e.g. polymorphisms), each with its own valid existence. This clone is substantially in agreement with the reference, but a complete review of all prevailing variants is recommended prior to use. [More info](#)

OTI Annotation: This clone was engineered to express the complete ORF with an expression tag. Expression varies depending on the nature of the gene.

Components: The ORF clone is ion-exchange column purified and shipped in a 2D barcoded Matrix tube containing 10ug of transfection-ready, dried plasmid DNA (reconstitute with 100 ul of water).

Reconstitution Method:

1. Centrifuge at 5,000xg for 5min.
2. Carefully open the tube and add 100ul of sterile water to dissolve the DNA.
3. Close the tube and incubate for 10 minutes at room temperature.
4. Briefly vortex the tube and then do a quick spin (less than 5000xg) to concentrate the liquid at the bottom.
5. Store the suspended plasmid at -20°C. The DNA is stable for at least one year from date of shipping when stored at -20°C.

RefSeq: [NM_207421.2](#), [NP_997304.2](#)

RefSeq Size: 2397 bp

RefSeq ORF: 2085 bp

Locus ID: 353238

UniProt ID: [Q6TGC4](#)

Cytogenetics: 1p36.13

Gene Summary: This gene encodes a member of the peptidyl arginine deiminase family of enzymes, which catalyze the post-translational deimination of proteins by converting arginine residues into citrullines in the presence of calcium ions. The family members have distinct substrate specificities and tissue-specific expression patterns. This protein may play a role in cytoskeletal reorganization in the egg and in early embryo development. [provided by RefSeq, Sep 2012]