

Product datasheet for **RG218696**

TPD52L1 (NM_003287) Human Tagged ORF Clone

Product data:

Product Type: Expression Plasmids
Product Name: TPD52L1 (NM_003287) Human Tagged ORF Clone
Tag: TurboGFP
Symbol: TPD52L1
Synonyms: D53; TPD53
Mammalian Cell Selection: Neomycin
Vector: pCMV6-AC-GFP (PS100010)
E. coli Selection: Ampicillin (100 ug/mL)
ORF Nucleotide Sequence: >RG218696 representing NM_003287
Red=Cloning site Blue=ORF Green=Tags(s)

TTTTGTAATACGACTCACTATAGGGCGGCCGGAATTCGTCGACTGGATCCGGTACCGAGGAGATCTGCC
GCC**CGATCGCC**

ATGGAGGCGCAGGCACAAGGTTTGTGGAGACTGAACCGTTGCAAGGAACAGACGAAGATGCAGTAGCCA
GTGCTGACTTCTCTAGCATGCTCTCTGAGGAGGAAAAGGAAGAGTTAAAAGCAGAGTTAGTTCAGCTAGA
AGACGAAATTACAACACTACGACAAGTTTTGTGACGCGAAAAGGCATCTAGTTGAGATAAAACAAAA
CTCGGCATGAACCTGATGAATGAATTAACAGAACTTCAGCAAAAGCTGGCATGACATGCAGACTACCA
CTGCCTACAAGAAAACACATGAAACCTGAGTCACGCAGGCGAAAAGGCAACTGCAGCTTTCAGCAACGT
TGGAACGCCATCAGCAAGAAGTTCGGAGACATGAGTTACTCCATTCGCCATTCCATAAGTATGCCTGCT
ATGAGGAATTCTCTACTTTCAAATCATTGAGGAGAGGGTTGAGACAACCTGCACAAGCCTCAAGACGA
AAGTAGCGGTACGAACCTAATGGAGGAGTTTTGAGGAGGTCCTCAGCTCCACGGCCCATGCCAGTGC
CCAGAGCTTGGCAGGAGGCTCCCGCGGACCAAGGAGGAGGAGCTGCAGTGC

AG**CGGACCG**ACGCGTACGCGGCCGCTCGAG - GFP Tag - GTTTAA

Protein Sequence: >RG218696 representing NM_003287
Red=Cloning site Green=Tags(s)

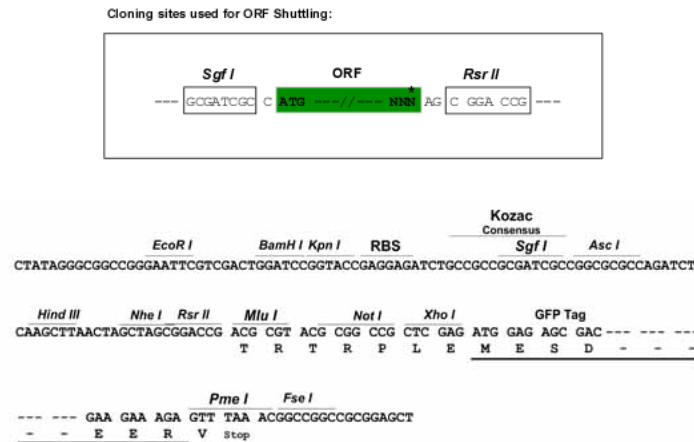
MEAQAGLLETEPLQGTDEDAVASADFSMSEEEKEELKAELVQLEDEITTLRQVLSAKERHLVEIKQK
LGMNLMNELKQNFSSKSWHDMQTTTAYKKTHELSHAGQKATAAFSNVGTAISSKFGDMSYSIRHSISMPA
MRNSPTFKSFEERVETTTSKTKVGGTNPNGGSFEEVLSSTAHASASLAGGSRRTKEELQC

SGPTRRRLE - GFP Tag - V

Restriction Sites: Sgfl-RsrII



[View online »](#)

Cloning Scheme:


ACCN: NM_003287

ORF Size: 612 bp

OTI Disclaimer: The molecular sequence of this clone aligns with the gene accession number as a point of reference only. However, individual transcript sequences of the same gene can differ through naturally occurring variations (e.g. polymorphisms), each with its own valid existence. This clone is substantially in agreement with the reference, but a complete review of all prevailing variants is recommended prior to use. [More info](#)

OTI Annotation: This clone was engineered to express the complete ORF with an expression tag. Expression varies depending on the nature of the gene.

Components: The ORF clone is ion-exchange column purified and shipped in a 2D barcoded Matrix tube containing 10ug of transfection-ready, dried plasmid DNA (reconstitute with 100 ul of water).

Reconstitution Method:

1. Centrifuge at 5,000xg for 5min.
2. Carefully open the tube and add 100ul of sterile water to dissolve the DNA.
3. Close the tube and incubate for 10 minutes at room temperature.
4. Briefly vortex the tube and then do a quick spin (less than 5000xg) to concentrate the liquid at the bottom.
5. Store the suspended plasmid at -20°C. The DNA is stable for at least one year from date of shipping when stored at -20°C.

RefSeq: [NM_003287.4](#)

RefSeq Size: 1388 bp

RefSeq ORF: 615 bp

Locus ID: 7164

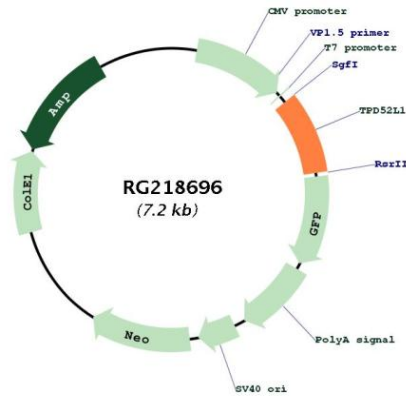
UniProt ID: [Q16890](#)

Cytogenetics: 6q22.31

Domains: TPD52

Gene Summary: This gene encodes a member of a family of proteins that contain coiled-coil domains and may form hetero- or homomers. The encoded protein is involved in cell proliferation and calcium signaling. It also interacts with the mitogen-activated protein kinase kinase kinase 5 (MAP3K5/ASK1) and positively regulates MAP3K5-induced apoptosis. Multiple alternatively spliced transcript variants have been observed. [provided by RefSeq, Jan 2016]

Product images:



Circular map for RG218696