

## Product datasheet for **RG218695**

### **IKB beta (NFKBIB) (NM\_001001716) Human Tagged ORF Clone**

#### Product data:

Product Type:	Expression Plasmids
Product Name:	IKB beta (NFKBIB) (NM_001001716) Human Tagged ORF Clone
Tag:	TurboGFP
Symbol:	IKB beta
Synonyms:	IKBB; TRIP9
Mammalian Cell Selection:	Neomycin
Vector:	pCMV6-AC-GFP (PS100010)
E. coli Selection:	Ampicillin (100 ug/mL)
ORF Nucleotide Sequence:	>RG218695 representing NM_001001716 Red=Cloning site Blue=ORF Green=Tags(s)

TTTGTAAATACGACTCACTATAGGGCGGCCGGAATTCGTCGACTGGATCCGGTACCGAGGAGATCTGCC  
GCC**CGATCGCC**

ATGAATGGTGCGACAGCGGCCTGGGCTCCCTGGGTCCGGACGCAGCGCCCCGGAGGACCTGGGTGGG  
CGCGGAGTTGGGCGGGGCTGTCGTGGGCTCCCTCGTCTTCGGCTACGTCAGGATGGGACACG  
CTTCTCGCCGGCACTGAGTACATGGACCTGCAGAATGACCTAGGCCAGACAGCCCTGCACCTGGCAGCC  
ATCCTGGGGGAGACATCCACGGTGGAGAAGCTGTACGCAGCAGGCGCCGGGCTGTGTGTGGCGGAGCGTA  
GGGGCCACACGGCGCTGCACCTGGCCTGCCGTGTGGGGCACACGCCTGTGCCCGTGCCCTGCTTCAGCC  
CCGCCCCCGCGCCCCAGGGAAGCCCCGACACCTACCTCGCTCAGGGCCCTGACCGTACTCCCGACACC  
AACCATACCCCTGTCGCCTTGTACCCCGATTCCGACTTGGAGAAGGAAGAAGAGGAGAGTGAGGAGGACT  
GGAAGCTGCAGCTGGAGGCTGAAACTACGAGGGCCACACCCCACTCCACGTGGCCGTTATCCACAAAGA  
TGTGGAGATGGTCCGGCTGCTCCGAGATGCTGGAGCTGACCTTGACAAACCGAGGCCACGTGCGGCCGG  
AGCCCCCTTCATTTGGCAGTGGAGGCCAGGCAGCCGATGTGCTGGAGCTTCTCTGAGGGCAGGCGCGA  
ACCCTGCTGCCCGCATGTACGGTGGCCGACCCCACTCGGCAGTGCCATGCTCCGGCCCAACCCATCCT  
CGCCCGCTCCTCCGTGCACACGGAGCCCTGAGCCCGAGGGCGAGGACGAGAAATCCGGCCCTGCAGC  
AGCAGTAGCGACAGCGACAGCGGAGACGAGGCGTGAGTCAGGAGGAGAGACAGGCGAGCCAGCTGGGG  
GGTCAGGA

**ACGCGT**ACGCGGCCGCTCGAG - GFP Tag - GTTTAA



[View online »](#)

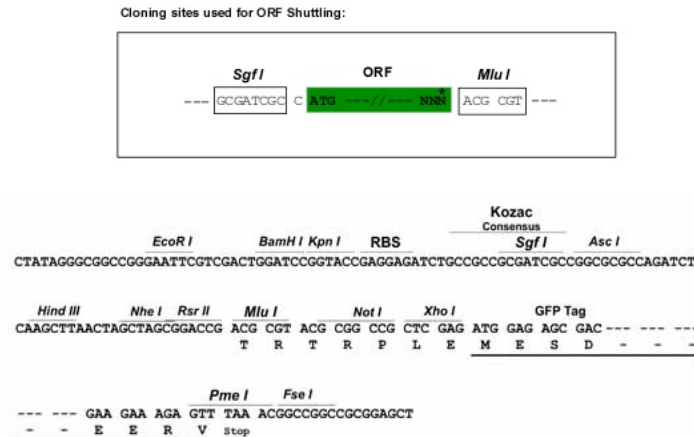
**Protein Sequence:** >RG218695 representing NM\_001001716  
 Red=Cloning site Green=Tags(s)

MNGATAAWAPWVRTQRPEDLGWARSWARGCRGLPSSSATSLRMGTRFSAGTEYMDLQNDLGQ TALHLAA  
 ILGETSTVEKLYAAGAGLCVAERRGHTALHLACRVGAHACARALLQPRPRRPREAPDTYLAQGPDRTPDT  
 NHTPVALYPDSLEKEEEESEEDWKLQLEAENYEGHTPLHVAVIHKDVMVRLLRDAGADLDKPEPTCGR  
 SPLHLAVEAQAADVLELLLRAGANPAARMYGGRTPLGSAML RPNPILARLLRAHGAPEPEGEDEKSGPCS  
 SSSDSDSGDEGVSQEERQGGSPAGGSG

TRTRPLE – GFP Tag – V

**Restriction Sites:** SgfI-MluI

**Cloning Scheme:**



**ACCN:** NM\_001001716

**ORF Size:** 918 bp

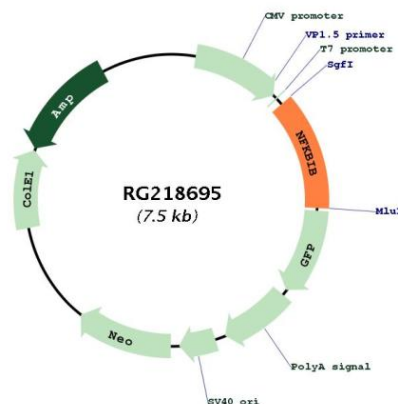
**OTI Disclaimer:** Due to the inherent nature of this plasmid, standard methods to replicate additional amounts of DNA in E. coli are highly likely to result in mutations and/or rearrangements. Therefore, OriGene does not guarantee the capability to replicate this plasmid DNA. Additional amounts of DNA can be purchased from OriGene with batch-specific, full-sequence verification at a reduced cost. Please contact our customer care team at [custsupport@origene.com](mailto:custsupport@origene.com) or by calling 301.340.3188 option 3 for pricing and delivery.

The molecular sequence of this clone aligns with the gene accession number as a point of reference only. However, individual transcript sequences of the same gene can differ through naturally occurring variations (e.g. polymorphisms), each with its own valid existence. This clone is substantially in agreement with the reference, but a complete review of all prevailing variants is recommended prior to use. [More info](#)

**OTI Annotation:** This clone was engineered to express the complete ORF with an expression tag. Expression varies depending on the nature of the gene.

<b>Components:</b>	The ORF clone is ion-exchange column purified and shipped in a 2D barcoded Matrix tube containing 10ug of transfection-ready, dried plasmid DNA (reconstitute with 100 ul of water).
<b>Reconstitution Method:</b>	<ol style="list-style-type: none"> <li>1. Centrifuge at 5,000xg for 5min.</li> <li>2. Carefully open the tube and add 100ul of sterile water to dissolve the DNA.</li> <li>3. Close the tube and incubate for 10 minutes at room temperature.</li> <li>4. Briefly vortex the tube and then do a quick spin (less than 5000xg) to concentrate the liquid at the bottom.</li> <li>5. Store the suspended plasmid at -20°C. The DNA is stable for at least one year from date of shipping when stored at -20°C.</li> </ol>
<b>RefSeq:</b>	<u>NM_001001716.1, NP_001001716.1</u>
<b>RefSeq Size:</b>	2213 bp
<b>RefSeq ORF:</b>	920 bp
<b>Locus ID:</b>	4793
<b>Cytogenetics:</b>	19q13.2
<b>Protein Families:</b>	Stem cell - Pluripotency, Transcription Factors
<b>Protein Pathways:</b>	Adipocytokine signaling pathway, B cell receptor signaling pathway, Chemokine signaling pathway, Cytosolic DNA-sensing pathway, Neurotrophin signaling pathway, NOD-like receptor signaling pathway, RIG-I-like receptor signaling pathway, T cell receptor signaling pathway
<b>Gene Summary:</b>	The protein encoded by this gene belongs to the NF-kappa-B inhibitor family, which inhibit NF-kappa-B by complexing with, and trapping it in the cytoplasm. Phosphorylation of serine residues on these proteins by kinases marks them for destruction via the ubiquitination pathway, thereby allowing activation of the NF-kappa-B, which translocates to the nucleus to function as a transcription factor. Alternatively spliced transcript variants have been found for this gene.[provided by RefSeq, Jul 2011]

## Product images:



Circular map for RG218695