

Product datasheet for **RG218694**

RARRES1 (NM_002888) Human Tagged ORF Clone

Product data:

Product Type: Expression Plasmids
Product Name: RARRES1 (NM_002888) Human Tagged ORF Clone
Tag: TurboGFP
Symbol: RARRES1
Synonyms: LXNL; PERG-1; TIG1
Mammalian Cell Selection: Neomycin
Vector: pCMV6-AC-GFP (PS100010)
E. coli Selection: Ampicillin (100 ug/mL)
ORF Nucleotide Sequence: >RG218694 representing NM_002888
 Red=Cloning site Blue=ORF Green=Tags(s)

TTTTGTAATACGACTCACTATAGGGCGCCGGGAATTCGTCGACTGGATCCGGTACCGAGGAGATCTGCC
 GCC**CGATCGCC**

ATGCAGCCCCGCGCAACGGCTGCCTGCCTCCCTGGTCCGGGCCAGGGGCCGCGCCCCACCGCCCCGC
 TGCTCGCGCTGCTGCTGTTGCTCGCCCCGGTGGCGGCCCGCGGGTCCGGGGACCCGACACCCTGG
 GCAGCCTCAGGATGCTGGGGTCCCGCGCAGGCTCCTGCAGCAGGCGCGCGCGCGCTTCACTTCTTC
 AACTCCGGTCCGGCTCGCCAGCGCGTACGAGTGTGGCCGAGGTGCAGGAGGGCCGCGCTGGATTA
 ATCCAAAAGAGGGATGTAAGTTCACGTGGTCTTCAGCACAGAGCGCTACAACCCAGAGTCTTTACTTCA
 GGAAGGTGAGGGACGTTTGGGAAATGTTCTGCTCGAGTGTTCGAGAAATCAGAAACCCAGACCAACC
 ATCAATGTAACCTGTACACGGCTCATCGAGAAAAAGAAAAGACAACAAGAGGATTACCTGCTTTACAAGC
 AAATGAAGCAACTGAAAAACCCCTTGGAAATAGTCAGCATACTGATAATCATGGACATATTGATCCCTC
 TCTGAGACTCATCTGGGATTTGGCTTTCCTTGGAAAGCTTTACGTGATGTGGGAAATGACAACACAGGTG
 TCACACTACTTGGCACAGCTCACTAGTGTGAGGCAGTGGTAAGAAAAACC

ACGCGTACGCGGCCGCTCGAG - GFP Tag - GTTTAA



[View online »](#)

Protein Sequence: >RG218694 representing NM_002888
 Red=Cloning site Green=Tags(s)

MQPRRQRLPAPWSGPRGRPTAPLLALLLLLAPVAAPAGSGDPDDPGQPQDAGVPRLLQQAARAALHFF
 NFRSGSPSALRVLAEVQEGRAWINPKEGCKVHVVFSTERYNPESLLQEGEGRLLGKCSARVFFKNQKPRPT
 INVTCRLIEKKKRQQEDYLLYKQMKQLKNPLEIVSIPDNHGHIDPSLRLIWDLAFLGSSVYMWEMTTQV
 SHYYLAQLTSVRQWVRKT

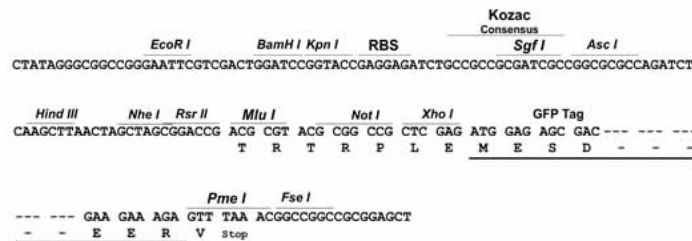
TRTRPLE - GFP Tag - V

Chromatograms: https://cdn.origene.com/chromatograms/ja2297_e03.zip

Restriction Sites: SgfI-MluI

Cloning Scheme:

Cloning sites used for ORF Shuttling:



ACCN: NM_002888

ORF Size: 684 bp

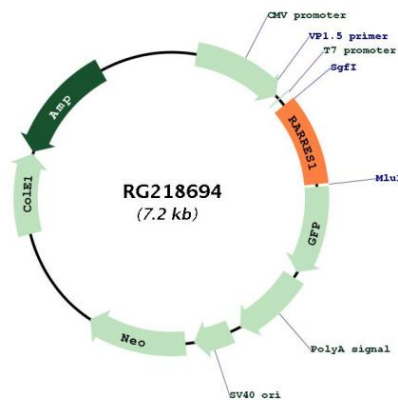
OTI Disclaimer: Due to the inherent nature of this plasmid, standard methods to replicate additional amounts of DNA in E. coli are highly likely to result in mutations and/or rearrangements. Therefore, OriGene does not guarantee the capability to replicate this plasmid DNA. Additional amounts of DNA can be purchased from OriGene with batch-specific, full-sequence verification at a reduced cost. Please contact our customer care team at custsupport@origene.com or by calling 301.340.3188 option 3 for pricing and delivery.

The molecular sequence of this clone aligns with the gene accession number as a point of reference only. However, individual transcript sequences of the same gene can differ through naturally occurring variations (e.g. polymorphisms), each with its own valid existence. This clone is substantially in agreement with the reference, but a complete review of all prevailing variants is recommended prior to use. [More info](#)

OTI Annotation: This clone was engineered to express the complete ORF with an expression tag. Expression varies depending on the nature of the gene.

- Components:** The ORF clone is ion-exchange column purified and shipped in a 2D barcoded Matrix tube containing 10ug of transfection-ready, dried plasmid DNA (reconstitute with 100 ul of water).
- Reconstitution Method:**
1. Centrifuge at 5,000xg for 5min.
 2. Carefully open the tube and add 100ul of sterile water to dissolve the DNA.
 3. Close the tube and incubate for 10 minutes at room temperature.
 4. Briefly vortex the tube and then do a quick spin (less than 5000xg) to concentrate the liquid at the bottom.
 5. Store the suspended plasmid at -20°C. The DNA is stable for at least one year from date of shipping when stored at -20°C.
- RefSeq:** [NM_002888.3](#)
- RefSeq Size:** 886 bp
- RefSeq ORF:** 687 bp
- Locus ID:** 5918
- UniProt ID:** [P49788](#)
- Cytogenetics:** 3q25.32
- Protein Families:** Druggable Genome
- Gene Summary:** This gene was identified as a retinoid acid (RA) receptor-responsive gene. It encodes a type 1 membrane protein. The expression of this gene is upregulated by tazarotene as well as by retinoic acid receptors. The expression of this gene is found to be downregulated in prostate cancer, which is caused by the methylation of its promoter and CpG island. Alternatively spliced transcript variant encoding distinct isoforms have been observed. [provided by RefSeq, Jul 2008]

Product images:



Circular map for RG218694