

Product datasheet for **RG218688**

alpha Adducin (ADD1) (NM_014190) Human Tagged ORF Clone

Product data:

Product Type:	Expression Plasmids
Product Name:	alpha Adducin (ADD1) (NM_014190) Human Tagged ORF Clone
Tag:	TurboGFP
Symbol:	ADD1
Synonyms:	ADDA
Mammalian Cell Selection:	Neomycin
Vector:	pCMV6-AC-GFP (PS100010)
E. coli Selection:	Ampicillin (100 ug/mL)



[View online »](#)

ORF Nucleotide Sequence:

>RG218688 representing NM_014190
 Red=Cloning site Blue=ORF Green=Tags(s)

TTTTGTAATACGACTCACTATAGGGCGGCCGGAATTCGTCGACTGGATCCGGTACCGAGGAGATCTGCC
 GCC**CGCATCGCC**

ATGAATGGTGATTCTCGTCTGCGGTGGTGACCTCACCACCCCGACCACAGCCCTCACAGGAGAGGT
 ACTTCGACCGAGTAGATGAGAACAACCCAGAGTACTTGAGGGAGAGGAACATGGCACCAGACCTTCGCCA
 GGACTTCAACATGATGGAGCAAAAAGAAGAGGGTGTCCATGATTCTGCAAAGCCCTGCTTTCTGTGAAGAA
 TTGGAATCAATGATACAGGAGCAATTTAAGAAGGGGAAGAACCCACAGGCCTATTGGCATTACAGCAGA
 TTGCAGATTTTATGACCACGAATGTACCAATGTCTACCAGCAGCTCCGCAAGGAGGGATGGCTGCCTT
 AAACATGAGTCTTGGTATGGTGACTCCTGTGAACGATCTTAGAGGATCTGATTCTATTGCGTATGACAAA
 GGAGAGAAGTTATTACGGTGTAAATTGGCAGCGTTTTATAGACTAGCAGATCTCTTTGGGTGGTCTCAGC
 TTATCTACAATCATATCACACCAGAGTGAACCTCCGAGCAGGAACACTTCTCATTGTCCCTTTGGGCT
 TCTTTACAGTGAAGTACTGCATCCAGTTTGGTTAAGATCAATCTACAAGGAGATATAGTAGATCGTGGA
 AGCACTAATCTGGGAGTGAATCAGGCCGCTTACCTTACACTCTGCAATTTATGCTGCACGCCCGGACG
 TGAAGTGCCTGCTGCACATTCACACCCAGCAGGGGCTGCGGTCTCTGCAATGAAATGTGGCCTCTTGCC
 AATCTCCCGGAGGCGCTTCCCTTGGAGAAGTGGCTTATCATGACTACCATGGCATTCTGGTTGATGAA
 GAGGAAAAAGTTTTGATTCAGAAAAATCTGGGGCCTAAAAGCAAGGTTCTTATTCTCCGGAACCATGGGC
 TCGTGTCAAGTGGAGAGAGCGTTGAGGAGGCTTCTATTACATCCATAACCTTGTGGTGGCTGTGAGAT
 CCAGGTTCGAAGTCTGGCCAGTGCAGGAGGACCAGACAATAGTCTGCTGAATCTGAGAAGTACAAA
 GCCAAGTCCCGTCCCGAGGCTCCGGTAGGGGAAGGCACTGGATCGCTCCCAAGTGGCAGATTGGTG
 AGCAGGAATTTGAAGCCCTCATGCGGATGCTCGATAATCTGGGCTACAGAAGTGGCTTATCGATA
 CCCTGCTCTGAGAGAGAAGTCTAAAAAATACAGCGATGTGGAGGTTCTGCTAGTGTACAGGTTACTCC
 TTTGCTAGTGACGGTGATTCGGGCACTTCTCCCACTCAGACACAGTTTTTCAGAAGCAGCAGCGGGAGA
 AGACAAGATGGCTGAACTCTGGCCGGGCGACGAAGCTTCCGAGGAAGGGCAGAATGGAAGCAGTCCCAA
 GTCGAAGACTAAGTGGACTAAAGAGGATGGACATAGAAGTCCACCTCTGCTGTCCTAACCTGTTTGT
 CCATTGAACACTAACCCAAAAGAGGTCCAGGAGATGAGGAACAAGATCCGAGAGCAGAATTTACAGGACA
 TTAAGACGGCTGGCCCTCAGTCCAGGTTTTGTGGTGTAGTATGGACAGGAGCTCGTCCAGGGAGA
 GCTGGTACGGCCTCAAGGCCATCATTGAAAAGGAGTACCAGCCCCACGTATTGTGAGCACCACGGGC
 CCCAACCCCTTACCACACTCACAGACCTGAGCTGGAGGAGTACCGCAGGGAGTGGAGAGGAAGCAGA
 AGGGCTCTGAAGAGAATCTGGACGAGGCTAGAGAACAGAAAGAAAAGAGTCTCCAGACCAGCCTGCGGT
 CCCCCACCGCCTCCAGCACTCCATCAAGCTGGAGGAAGGAGACGGATGCGCTAGAGAGTACCTGTTA
 CCC

ACGCGTACGCGGCCGCTCGAG – GFP Tag – GTTTAA

Protein Sequence:

>RG218688 representing NM_014190
 Red=Cloning site Green=Tags(s)

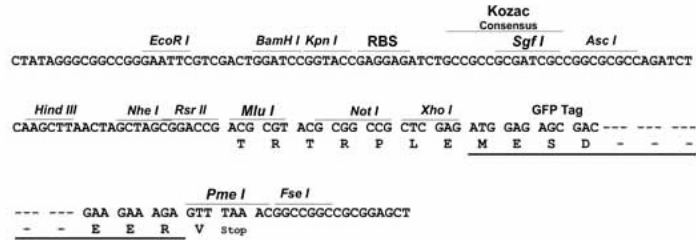
MNGDSRAAVVTSPPPTTAPHKERYFDRVDENNPEYLRERNMAPDLRQDFNMMEQKKRVSMILQSPAFCEE
 LESMIQEYFKKGNPTGLLALQQIADFMTTNVNVYPAAPQGGMAALNMSLGMVTPVNDLRGSDSIAYDK
 GEKLLRCKLAIFYRLADLFGWSQLIYNHITTRVNSEQEHLIVPFGLLYSEVTASSLVKINLQGDIVDRG
 STNLGVNQAGFTLHSAIYAARPDVKCVVHIHTPAGAAVSAMKCGLLPISPEALSLGEVAYHDYHGILVDE
 EEKVLIQKNLGPVSKVLILRNHGLVSVGESVVEAFYIHNLVVACEIQVRTLASAGGPDNLVLLNPEKYK
 AKSRSPGSPVGEVGGSPPKWQIGEQEFEALMRMLDNLGYRTGYPYRYPALREKSKYSDVEVPASVTGYS
 FASDGDSTGCSPLRHSFQKQREKTRWLNNSGRGDEASEEQNGSSPKSKTKWTKEDGHRSTSAVPLNFV
 PLNTNPKEVQEMRNKIREQNLQDIKTAGPQSQVLCGVVMDRSLVQGELVASKAIIIEKEYQPHVIVSTTG
 PNPFTTLTDRELEERREVERKQKQSEENLDEAREQKEKSPDQPAVPHPPPSTPIKLEEGDGCAREYLL
 P

TRTRPLE – GFP Tag – V

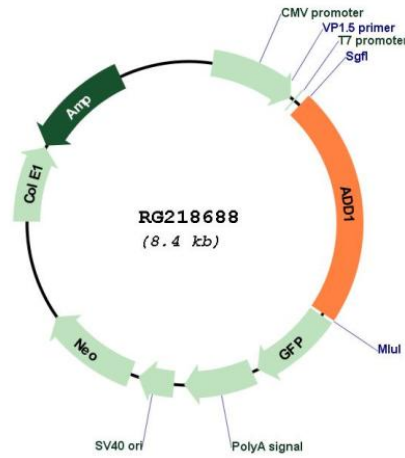
Restriction Sites: SgfI-MluI

Cloning Scheme:

Cloning sites used for ORF Shutting:



Plasmid Map:



ACCN: NM_014190

ORF Size: 1893 bp

OTI Disclaimer:	The molecular sequence of this clone aligns with the gene accession number as a point of reference only. However, individual transcript sequences of the same gene can differ through naturally occurring variations (e.g. polymorphisms), each with its own valid existence. This clone is substantially in agreement with the reference, but a complete review of all prevailing variants is recommended prior to use. More info
OTI Annotation:	This clone was engineered to express the complete ORF with an expression tag. Expression varies depending on the nature of the gene.
Components:	The ORF clone is ion-exchange column purified and shipped in a 2D barcoded Matrix tube containing 10ug of transfection-ready, dried plasmid DNA (reconstitute with 100 ul of water).
Reconstitution Method:	<ol style="list-style-type: none">1. Centrifuge at 5,000xg for 5min.2. Carefully open the tube and add 100ul of sterile water to dissolve the DNA.3. Close the tube and incubate for 10 minutes at room temperature.4. Briefly vortex the tube and then do a quick spin (less than 5000xg) to concentrate the liquid at the bottom.5. Store the suspended plasmid at -20°C. The DNA is stable for at least one year from date of shipping when stored at -20°C.
RefSeq:	NM_014190.4
RefSeq Size:	4004 bp
RefSeq ORF:	1896 bp
Locus ID:	118
UniProt ID:	P35611
Cytogenetics:	4p16.3
Domains:	Aldolase_II
Protein Families:	Druggable Genome
Gene Summary:	Adducins are a family of cytoskeletal proteins encoded by three genes (alpha, beta, and gamma). Adducin acts as a heterodimer of the related alpha, beta, or gamma subunits. The protein encoded by this gene represents the alpha subunit. Alpha- and beta-adducin include a protease-resistant N-terminal region and a protease-sensitive, hydrophilic C-terminal region. Adducin binds with high affinity to Ca(2+)/calmodulin and is a substrate for protein kinases A and C. [provided by RefSeq, Aug 2017]