

Product datasheet for **RG218661**

LYNX1 (NM_177457) Human Tagged ORF Clone

Product data:

Product Type: Expression Plasmids
Product Name: LYNX1 (NM_177457) Human Tagged ORF Clone
Tag: TurboGFP
Symbol: LYNX1
Mammalian Cell Selection: Neomycin
Vector: pCMV6-AC-GFP (PS100010)
E. coli Selection: Ampicillin (100 ug/mL)
ORF Nucleotide Sequence: >RG218661 representing NM_177457
Red=Cloning site Blue=ORF Green=Tags(s)

TTTTGTAATACGACTCACTATAGGGCGGCCGGAATTCGTCGACTGGATCCGGTACCGAGGAGATCTGCC
GCC**CGATCGCC**

ATGACGCCCTGCTCACCTGATCCTGGTGGTCTCATGGGCTTACCTCTGGCCAGGCCTGGACTGCC
ACGTGTGTGCCTACAACGGAGACAACCTGCTTCAACCCCATGCGCTGCCCGGCTATGGTTGCCTACTGCAT
GACCACGCGCACCTACTACACCCACCAGGATGAAGGTCAGTAAGTCTGCGTGCCCGCTGCTTCGAG
ACTGTGTATGATGGCTACTCCAAGCACGCGTCCACCACCTCCTGCTGCCAGTACGACCTTGCAACGGCA
CCGGCCTTGCCACCCCGGCCACCCTGGCCCTGGCCCCATCCTCCTGGCCACCCTCTGGGTCTCCTC

AG**CGGACCG**ACGCGTACGCGGCCGCTCGAG - GFP Tag - GTTTAA

Protein Sequence: >RG218661 representing NM_177457
Red=Cloning site Green=Tags(s)

MTPLLTLILVVLMLPLAQAALDCHVCAYNQDNCFNPMRCPAMVAYCMTTRTYTPTRMKVSKSCVPRCFE
TVYDGYKSHASTTSCCQYDLCNGTGLATPATLALAPILLATLWGLL

SGPTRRRLE - GFP Tag - V

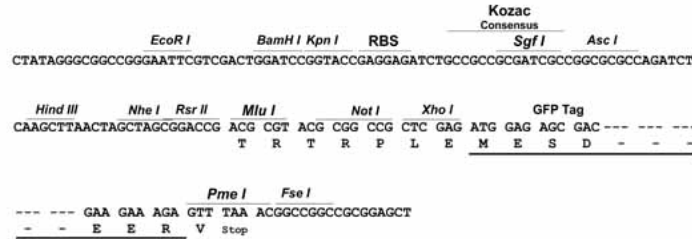
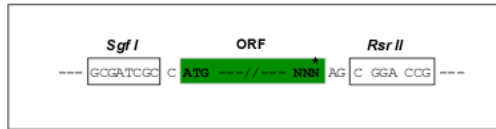
Restriction Sites: Sgfl-RsrII



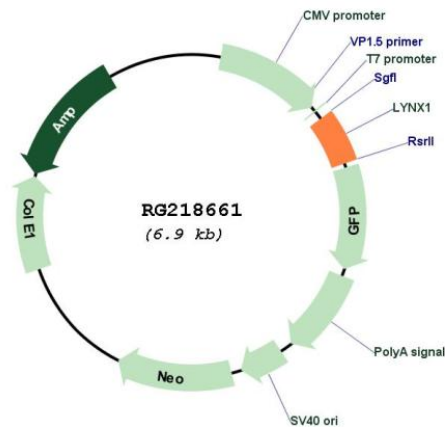
[View online »](#)

Cloning Scheme:

Cloning sites used for ORF Shuttling:



Plasmid Map:



ACCN: NM_177457

ORF Size: 348 bp

OTI Disclaimer:	The molecular sequence of this clone aligns with the gene accession number as a point of reference only. However, individual transcript sequences of the same gene can differ through naturally occurring variations (e.g. polymorphisms), each with its own valid existence. This clone is substantially in agreement with the reference, but a complete review of all prevailing variants is recommended prior to use. More info
OTI Annotation:	This clone was engineered to express the complete ORF with an expression tag. Expression varies depending on the nature of the gene.
Components:	The ORF clone is ion-exchange column purified and shipped in a 2D barcoded Matrix tube containing 10ug of transfection-ready, dried plasmid DNA (reconstitute with 100 ul of water).
Reconstitution Method:	<ol style="list-style-type: none"> 1. Centrifuge at 5,000xg for 5min. 2. Carefully open the tube and add 100ul of sterile water to dissolve the DNA. 3. Close the tube and incubate for 10 minutes at room temperature. 4. Briefly vortex the tube and then do a quick spin (less than 5000xg) to concentrate the liquid at the bottom. 5. Store the suspended plasmid at -20°C. The DNA is stable for at least one year from date of shipping when stored at -20°C.
RefSeq:	NM_177457.5
RefSeq Size:	4967 bp
RefSeq ORF:	351 bp
Locus ID:	66004
UniProt ID:	P0DP58
Cytogenetics:	8q24.3
Protein Families:	Druggable Genome
Gene Summary:	This gene encodes a GPI-anchored, cell membrane bound member of the Ly6/uPAR (LU) superfamily of proteins containing the unique three-finger LU domain. This protein interacts with nicotinic acetylcholine receptors (nAChRs), and is thought to function as a modulator of nAChR activity to prevent excessive excitation. Alternatively spliced transcript variants have been found for this gene. Read-through transcription between this gene and the neighboring downstream gene (SLURP2) generates naturally-occurring transcripts (LYNX1-SLURP2) that encode a fusion protein comprised of sequence sharing identity with each individual gene product. [provided by RefSeq, Sep 2017]