

## Product datasheet for **RG218608**

### TET1 (NM\_030625) Human Tagged ORF Clone

#### Product data:

Product Type:	Expression Plasmids
Product Name:	TET1 (NM_030625) Human Tagged ORF Clone
Tag:	TurboGFP
Symbol:	TET1
Synonyms:	bA119F7.1; CXXC6; LCX
Mammalian Cell Selection:	Neomycin
Vector:	pCMV6-AC-GFP (PS100010)
E. coli Selection:	Ampicillin (100 ug/mL)
ORF Nucleotide Sequence:	>RG218608 representing NM_030625 Red=Cloning site Blue=ORF Green=Tags(s)

TTTTGTAATACGACTCACTATAGGGCGGCCGGAATTCGTCGACTGGATCCGGTACCGAGGAGATCTGCC  
GCC**CGATCGCC**

ATGTCTCGATCCCGCCATGCAAGGCCTTCCAGATTAGTCAGGAAGGAAGATGTAACAAAAAAGAAAA  
ACAGCCAACTACGAAAGACAACCAAGGGAGCCAACAAAATGTGGCATCAGTCAAGACTTTAAGCCCTGG  
AAAATTAAGCAATTAATTCAAGAAAGAGATGTTAAGAAAAAACAGAACCTAACCCACCGTGCCAGTC  
AGAAGCCTTCTGACAAGAGCTGGAGCAGCACGCATGAATTTGGATAGGACTGAGGTTCTTTTTCAGAACC  
CAGAGTCTTAACCTGCAATGGGTTTACAATGGCGCTACGAAGCACCTCTTTAGCAGGGCAGCTCTCCCA  
ACCCCCACTGGTCGTAGCCAAATCCAAAAAGGTTCCACTTTCTAAGGGTTTAGAAAAGCAACATGATTGT  
GATTATAAGATACTCCCTGCTTTGGGAGTAAAGCACTCAGAAAATGATTCGGTTCCAATGCAAGACACCC  
AAGTCCTTCTGATATAGAGACTCTAATTGGTGTACAAAATCCCTCTTTACTTAAAGGTAAGAGCCAAGA  
GACAACTCAGTTTTGGTCCCAAAGAGTTGAGGATTCGAAGATCAATATCCCTACCCACAGTGCCCTGCA  
GCTGAGATCCTTCTGGGCCACTGGAAGGGACACGCTGTGGTGAAGGACTATTCTCTGAAGAGACATTGA  
ATGATACCAGTGGTTCCTCAAAAAATGTTTGCTCAGGACACAGTGTGTGCTCCTTTTCCCAAAGAGCAAC  
CCCCAAAGTTACCTCTCAAGGAAACCCAGCATTACGTTAGAAGAGTTGGGTTACAGAGTAGAATCTCTT  
AAGTTATCTGATTCTTACCTGGATCCCATTAAAAGTGAACATGATTGCTACCCACCTCCAGTCTTAATA  
AGTTTATACCTGACTTGAACCTTAGAACTGCTTGGCTCTTGGTGGTCTACGTCTCCTACCTCTGTAAT  
AAAATTCCTCTTGGCAGGCTCAAAAACAGCACCCTTGGTGTAAACCAGATCATCAAGAGGCCTTCGAA  
GCTACTGCAAAATCAACAGGAAGTTTCTGATACCACCTTTTCTAGGACAGGCCTTTGGTGTATCCAC  
ATCAATGGGAACTTCTGGTGTGACCCAGTTCATGGTGAAGCCCTGGGTGAGACCCAGATCTACCAGA  
GATTCCTGGTGTATTCCAGTCCAAGGAGAGGTCTTTGGTACTATTTTAGACCAACAAGAACTCTTGGT  
ATGAGTGGGAGTGTGCCCAGACTTGCTGTCTTCTTCTGTTCTCCTCAAATCCAATTGCTACCTTTA  
ATGCTCCTTCAAATGGCCTGAGCCCCAAGCACTGTCTCATATGGACTGCAGTCCAGGGTGTATACA  
GATTTTGCCTTTGGGCTCAGGACACACTCTCAATCATCATCAAACCTCAGAGAAAAATTCATTACCTCCA



[View online »](#)

GT AATGGCTATAAGCAATGTAGAAAATGAGAAGCAGGTT CATATAAGCTTCTGCCAGCTAACACTCAGG  
GGTTCCCATTAGCCCCTGAGAGAGGACTCTTCCATGCTTCACTGGGTATAGCCCAACTCTCTCAGGCTGG  
TCCTAGCAAAATCAGACAGAGGGAGCTCCAGGTCAGTGTAAACCAGCACAGTTCATGTTGTCAACACCACA  
GTGGTGACTATGCCAGTGCCAATGGTCAGTACCTCTCTTCTTCTATACCACTTTGCTACCGACTTTGG  
AAAAGAAGAAAAGAAAGCGATGTGGGTCTGTGAACCTGCCAGCAGAAGACCAACTGTGGTGAATGCAC  
TTACTGCAAGAACAGAAAAGAACGCCATCAGATCTGTAAAGAAAAGAAAATGTGAGGAGCTGAAAAAGAAA  
CCATCTGTTGTTGTCCTCTGGAGGTTATAAAGGAAAACAAGAGGCCCCAGAGGGAAAAGAACCCAAAAG  
TTTTAAAGGCAGATTTTGACAACAAACCAGTAAATGGCCCCAAGTCAGAATCCATGGACTACAGTAGATG  
TGGTCATGGGGAAGAACA AAAAATTGGAATTGAACCCACATACTGTTGAAAATGTA ACTAAAAATGAAGAC  
AGCATGACAGGCATCGAGGTGGAGAAGTGGACACAAAACAAGAAATCACAGTTAACTGATCACGTGAAAAG  
GAGATTTTAGTGCTAATGTCCCAGAAGCTGAAAAATCGAAAACTCTGAAGTTGACAAGAAACGAACCAA  
ATCTCCAAAATGTTTGTACAAACCGTAAGAAATGGCATTAAACATGTACTGTTTACCAGCTGAAACA  
AATGTTTCATTTAAAAATTC AATATTGAAGAATTCGGCAAGACATTGAAAAACAATTCTTATAAATTC  
TAAAAGACTGCAAACCATAAAAAACGCTATGAGCTCTGTTGCTACTGATATGAGTTGTGATCATCTCAA  
GGGGAGAAGTAACGTTTTAGTATTCAGCAGCCTGGCTTAACTGCAGTCCATTCCACATTCTTCACAC  
TCCATCATAAATCATCATGCTAGTATACACAATGAAGGTGATCAACCAAAAACCTCTGAGAATATACCAA  
GTAAGAACA AAAAAGATGGATCTCCCGTTCAACCAAGTCTCTTATCGTTAATGAAAGATAGGAGATTAAC  
ATTGGAGCAAGTGGTAGCCATAGAGGCCCTGACTCAACTCTCAGAAGCCCCATCAGAGAATTCCTCCCCA  
TCAAAGTCAGAGAAGGATGAGGAATCAGAGCAGAGAACAGCCAGTTTGCTTAATAGCTGCAAAGCTATCC  
TCTACTGTAAAGAAAAGACCTCCAAGACCCAACTTACAGGGAGAGCCACCAAACTTAATCACTGTCC  
ATCTTTGGAAAAACAAGTTCATGCAACACGGTGGTTTTCAATGGGCAAACTACTACCTTTCCAACCTCA  
CATATAACTCAGCTACTAACCAAGCATCCACAAAGTACATGAATTTCAAAGTCACAAATTCATTAT  
CTCTTTTTATACCAAAATCAAATTC AAGATTGACACCAATAAAAAGTATTGCTCAAGGGATAATTAC  
TCTTGACAATTTGTTCCAATGATTTGCATCAGTTGCCACCAAGAAAATAATGAAGTGAGTATTGCAACCCAG  
TTACTGGACAGCAGCAAAAATTGGACTCAGATGATCTATCATGTGAGGATGCAACCCATACCCAAATTG  
AGGAAGATGTTGCAACACAGTTGACACAACCTTGCTTCGATAATTAAGATCAATTATATAAAACCAGAGGA  
CAAAAAGTTGAAAGTACACCAACAAGCCTTGTCACATGTAATGTACAGCAAAAATACAATCAGGAGAAG  
GGCACAATGCAACAGAAACACCTTCAAGTGTACACAATAATCATGGTTCATCATTAAACAAAACAAAAGA  
ACCCAACCCAGAAAAGACAAAATCCACCCCATCAAGAGATCGGGCGAAAAGAAGCCACAGTTGTAAG  
TTATCAAGAAAATGATCGGCAGAAAGTGGAAAAGTTGCTCTATATGTATGGCACAATATGCGACATTTGG  
ATAGCATCGAAATTTCAAATTTTGGGCAATTTGTCCACATGATTTTCTACTGTATTTGGGAAAATTT  
CTTCTCGACCAAAATATGGAAACCACTGGCTCAAACGAGGTCCATTATGCAACCCAAAACAGTATTTCC  
ACCACTCACTCAGATAAAATTACAGAGATATCCTGAATCAGCAGAGGAAAAGGTGAAGGTTGAACCATTG  
GATTCACCTCAGCTTATTTTCATCTTAAAACGGAATCCAACGGGAAGGCATTCACTGATAAAGCTTATAAAT  
CTCAGGTACAGTTAACGGTGAATGCCAATCAGAAAAGCCCATCCTTTGACCCAGCCCTCTCTCCACCTAA  
CCAGTGTGCTAACGTGATGGCAGGCGATGACCAAAATACGGTTTCAGCAGGTTGTTAAGGAGCAACTCATG  
CATCAGAGACTGCCAACATTGCCTGGTATCTCTCATGAAACACCTTACCGGAGTCAGCACTAACTCTCA  
GGAATGTAATGTAGTGTGTTCAAGTGGAAATACAGTGGTTTCTACCAAAAAGTGAAGAGGAAGTCTGTTT  
AATCCAGTTTTGGAACATCAGAAATTTCCACAGTGGACAGTGCACAGAAAATTTTAAATGATTATGCCATG  
AACTTCTTTACTAACCTACAAAAAACCTAGTGTCTATAACTAAAGATTCTGAACTGCCACCTGCAGCT  
GTCTTGATCGAGTTATACAAAAAGACAAAAGGCCATATTATACACACCTTGGGGCAGGACCAAGTGTTC  
TGCTGTGAGGAAATCATGGAGAATAGGTATGGTCAAAAAGGAAAACGCAATAAGGATAGAAAATAGTAGTG  
TACACCGGTAAGAAGGGAAAAGCTCTCATGGGTGTC AATTGCTAAGTGGGTTTTAAGAAGAAGCAGTG  
ATGAAGAAAAGTTCTTTGTTGGTCCGGCAGCGTACAGGCCACCACTGTCCAACGTGTGATGGTGGT  
GCTCATCATGGTGTGGATGGCATCCCTCTTCCAATGGCCGACCGGCTATACACAGAGCTCACAGAGAAT  
CTAAAGTCATACAATGGGCACCTACCGACAGAAGATGCACCCTCAATGAAAATCGTACCTGTACATGTC  
AAGGAATTGATCCAGAGACTTGTGGAGTTCATCTCTTTTGGCTGTTTCATGGAGTATGTACTTTAATGG  
CTGTAAGTTTGGTAGAAGCCCAAGCCCCAGAAGATTTAGAATTGATCCAAGCTCTCCCTTACATGAAAA  
AACCTTGAAGATAACTTACAGAGTTTGGCTACACGATTAGCTCCAATTTATAAGCAGTATGCTCCAGTAG  
CTTACCAAAATCAGGTGGAATATGAAAATGTTGCCGAGAATGTCGGCTTGGCAGCAAGGAAGGTCGTCC  
CTTCTCTGGGGTCACTGCTTGCCTGGACTTCTGTGCTCATCCCCACAGGGACATTCAACAATGAATAAT  
GGAAGCACTGTGGTTGTACCTAACTCGAGAAGATAACCGCTCTTTGGGTGTTATTCTCAAGATGAGC

AGCTCCATGTGCTACCTCTTTATAAGCTTTCAGACACAGATGAGTTTGGCTCCAAGGAAGGAATGGAAGC  
CAAGATCAAACTGGGGCCATCGAGGTCCTGGCACCCCGCGCAAAAAAGAACGTGTTTCACTCAGCCT  
GTTCCCGTTCTGGAAAGAAGAGGGCTGCGATGATGACAGAGGTTCTTGCACATAAGATAAGGGCAGTGG  
AAAAGAAACCTATTCGCCGAATCAAGCGGAAGAATAACTCAACAACAACAACAACAGTAAGCCTTCGTC  
ACTGCCAACCTTAGGGAGTAACACTGAGACCGTGCAACCTGAAGTAAAAAGTGAACCCGAACCCATTTT  
ATCTTAAAAAGTTCAGACAACACTAAAACCTTATTCGCTGATGCCATCCGCTCCTCACCCAGTGAAGAGG  
CATCTCCAGGCTTCTCCTGGTCCCGAAGACTGCTTCAGCCACACCAGCTCCACTGAAGAATGACGCAAC  
AGCCTCATGCGGGTTTTTCAGAAAGAAGCAGCACTCCCACTGTACGATGCCTTCGGGAAGACTCAGTGGT  
GCCAATGCAGCTGCTGCTGATGGCCCTGGCATTTCACAGCTTGGCGAAGTGGCTCCTCTCCCCACCCGTG  
CTGCTCCTGTGATGGAGCCCTCATTAATTCTGAGCCTTCCACTGGTGTGACTGAGCCGCTAACGCCTCA  
TCAGCCAAACCACCAGCCCTCCTCCTCACCTCCTCAAGACCTTGCCTCTTCTCCAATGGAAGAAGAT  
GAGCAGCATTCTGAAGCAGATGAGCCTCCATCAGACGAACCCCTATCTGATGACCCCTGTACCTGCTG  
AGGAGAAATTGCCCCACATTGATGAGTATTGGTCAGACAGTGAACACATCTTTTTGGATGCAAAATATTGG  
TGGGGTGGCCATCGCACCTGCTCAGGCTCGGTTTTGATTGAGTGTGCCCGGCGAGAGCTGCACGCTACC  
ACTCCTGTTGAGCACCCCAACCGTAATCATCCAACCCGCTCCTCCTTGTCTTTTACCAGCACAAAACC  
TAAATAAGCCCCAACATGGTTTTGAACTAAACAAGATTAAGTTTGAAGCTAAAGAAGCTAAGAATAAGAA  
AATGAAGGCCTCAGAGCAAAAAGACCAGGCAGCTAATGAAGTCCAGAACAGTCCCTCTGAAGTAAATGAA  
TTGAACCAAAATCCTTCTCATAAAGCATTAAACCTAACCCATGACAATGTTGTCACCGTGTCCCCTATG  
CTCTCACACACGTTGCGGGGCCCTATAACCATTGGGTC

ACGCGTACGCGGCCGCTCGAG - GFP Tag - GTTTAA

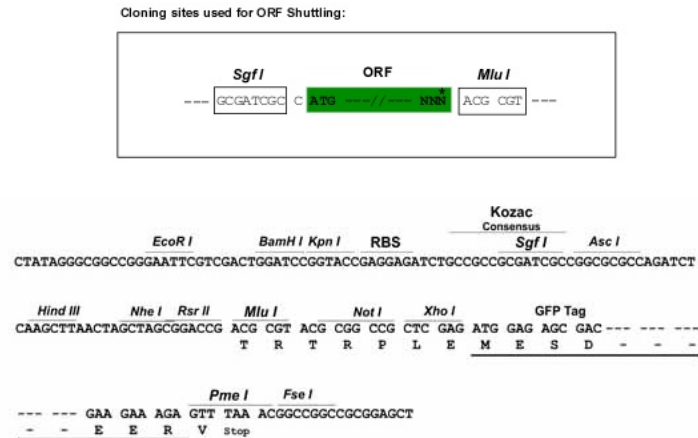
**Protein Sequence:** >RG218608 representing NM\_030625  
 Red=Cloning site Green=Tags(s)

```

MSRSRHARPSRLVRKEDVNKKKNSQLRKTGANKNVASVKTLSPGKLGKLIQERDVKKKTEPKPPVPV
RSLLTRAGAARMNLDREVLFNPESLTCNGFTMALRSTLSRRLSQPPLVVAKKKVPKSKGLEKQHD
DYKILPALGVKHSENDSVPMQDTQVLPDIETLIGVQNPSSLKGGKSQETTQFWSQRVEDSKINIPHSGPA
AEILPGPLEGTRCGEGLFSEETLNDSGSPKMF AQD TVCAPFPQRATPKVTSQGNPSIQLEELGSRVESL
KLSDSYLDPIKSEHDCYPTSSLNKKVIPDLNLRNCLALGGSTSPTSVIKFLLAGSKQATLGAKPDHQEAFE
ATANQQEVSDDTTSFLGQAFGAIPHQWELPGADPVHGEALGETPDLPEIPGAIPVQGEVFGTILDQQETLG
MSGSVVVDLPVFLPVPPNPIATFNAPSKWPEPQSTVSYGLAVQGAIQILPLGSGHTPQSSSNSEKNSLPP
VMAISNVENEKQVHISFLPANTQGFLAPERGLFHASLGIAQLSQAGPSKSDRGSSQVSVTSTVHVVNTT
VVTMPVPMVSTSSSYTTLLPTLEKKKRRCGVCEPCQQKTNCGECTYCKNRKNSHQICKKRKCEELKKK
PSVVVPLEVIKENKRPQREKKPKVLKADFNDKPVNGPKSEMDYSRCGHGEEQKLELNPHTVENVTKNED
SMTGIEVEKWTQNKKSQ L TDHVKGDF SANVPEAEKSKNSEVDKRTKSPKLFVQTVRNGIKHVHCLPAET
NVSFKKFNIEEFGKTLNNSYKFLKDTANHKNAMSSVATDMSCDHLKGRSNVLFVQPGFNCSSIPHSSH
SIINHHSIHNEGDQPKTPENIPSKEPKDGSVPQPSLLSLMKDRRLTLEQVVAIEALTQLSEAPSENSSP
SKSEKDEESEQRTASLLNSCKAIIYTVRKDLQDPNLQGEPPKLNHCPKLEKQSSCNTVVFNGQTTLTNS
HINSATNQASTKSHEYSKYVNSLSLFIKSNSSKIDTNKSI AQGII TLDNCSNDLHQLPPRNNEVEYCNQ
LLDSSKLLDSDDLSCQDATHQIEEDVATQLTQLASIIKINIKPEDKKVESTPTSLVTCNVQKYNQEK
GTMQKPPSSVHNNHGSSLTKQKNPTQKKTSTPSRDRRKKKPTVVSYQENDRQKWEKLSYMYGTICDIW
IASKFQNFQGFPHDFPTVFGKISSSTKIWKPLAQTRSIMQPKTVFPPLTQIKLQRYPESAEKVKVEPL
DSL SLFHLKTESNGKAF TDKAYNSQVQL TVNANQKAHPLTQPSSPPNQCANVMAGDDQIRFQQVVKEQLM
HQRLPTLPGISHETPLPESALTLRNVNVVCSGGITVVSTKSEEEVCSSTFGTSEFSTVDSAQKNFYNDYAM
NFFTNPTKNLVSI TKDSELPTCSCLDRVIQKDKGPYYTHLGAGPSVAAVREIMENRYGQKGN AIRIEIVV
YTGKEGKSSHGCP IAKWVLRSSDDEEKVLCVLRQRTGHHCTAVMVVLMVWDGIPLPMADRLYTELTEN
LKSYNHPTDRRCTLNENRTCTCQGIDPETCGASFSGCSWSMYFNGCKFGRSPSPRRFRIDPSSPLHEK
NLEDNLQSLATRLAPIYKQYAPVAYQNVQVEYENVARECRLGSKEGRPFSGVTA CLDFCAHPHRDIHNMNN
GSTVVCTLTREDNRSLGVIPQDEQLHVLPLYKLSDTDEFSGKEGMEAKIKSGAIEVLAPRRKRTCTFQP
VPRSGKKRAAMMTEVL AHKIRAVEKKPIPRIKRKNSTTTNNSKPSLPTLGSNTETVQPEVKSETEPHF
ILKSSDNTKTYSLMPSAPHPVKEASPGFSWSPKTASATPAPLKN DATASCGFSERSSTPHCTMPSGRLSG
ANAAAADGPGISQLGEVAPLPTLSAPVMEPLINSEPTGVTEPLTPHQPNHQPSFLTSPQDLASSPMEED
EQHSEADEPPSDEPLSDDPLSPAEEKLPHIDEYWSDEHIFLDANIGGVAIAPAHG SVLIECARRELHAT
TPVEHPNRNHPTRL SLVFYQHKNLNK PQHG FELNKIKFEAKEAKNKKMKASEQKDQAANEGPEQSSEVNE
LNQIPSHKALTLTHDNVTVSPYALTHVAGPYNHWW
  
```

TRTRPLE - GFP Tag - V

**Restriction Sites:** Sgfl-MluI

**Cloning Scheme:**


**ACCN:** NM\_030625

**ORF Size:** 6408 bp

**OTI Disclaimer:** The molecular sequence of this clone aligns with the gene accession number as a point of reference only. However, individual transcript sequences of the same gene can differ through naturally occurring variations (e.g. polymorphisms), each with its own valid existence. This clone is substantially in agreement with the reference, but a complete review of all prevailing variants is recommended prior to use. [More info](#)

**OTI Annotation:** This clone was engineered to express the complete ORF with an expression tag. Expression varies depending on the nature of the gene.

**Components:** The ORF clone is ion-exchange column purified and shipped in a 2D barcoded Matrix tube containing 10ug of transfection-ready, dried plasmid DNA (reconstitute with 100 ul of water).

**Reconstitution Method:**

1. Centrifuge at 5,000xg for 5min.
2. Carefully open the tube and add 100ul of sterile water to dissolve the DNA.
3. Close the tube and incubate for 10 minutes at room temperature.
4. Briefly vortex the tube and then do a quick spin (less than 5000xg) to concentrate the liquid at the bottom.
5. Store the suspended plasmid at -20°C. The DNA is stable for at least one year from date of shipping when stored at -20°C.

**RefSeq:** [NM\\_030625.1](#), [NP\\_085128.1](#)

**RefSeq Size:** 8497 bp

**RefSeq ORF:** 6411 bp

**Locus ID:** 80312

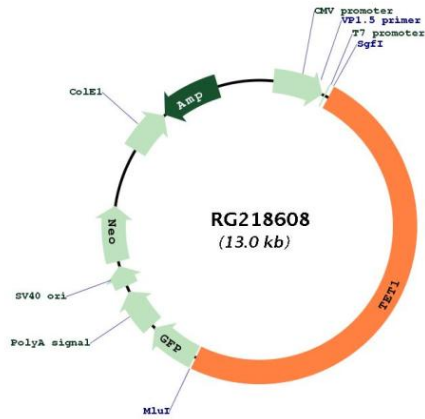
**UniProt ID:** [Q8NFU7](#)

**Cytogenetics:** 10q21.3

**Gene Summary:**

DNA methylation is an epigenetic mechanism that is important for controlling gene expression. The protein encoded by this gene is a demethylase that belongs to the TET (ten-eleven translocation) family. Members of the TET protein family play a role in the DNA methylation process and gene activation. [provided by RefSeq, Sep 2015]

**Product images:**



Circular map for RG218608