

## Product datasheet for **RG218584**

### TOPBP1 (NM\_007027) Human Tagged ORF Clone

#### Product data:

Product Type:	Expression Plasmids
Product Name:	TOPBP1 (NM_007027) Human Tagged ORF Clone
Tag:	TurboGFP
Symbol:	TOPBP1
Synonyms:	Dpb11; TOP2BP1
Mammalian Cell Selection:	Neomycin
Vector:	pCMV6-AC-GFP (PS100010)
E. coli Selection:	Ampicillin (100 ug/mL)
ORF Nucleotide Sequence:	>RG218584 representing NM_007027 Red=Cloning site Blue=ORF Green=Tags(s)

TTTTGTAATACGACTCACTATAGGGCGGCCGGAATTCGTCGACTGGATCCGGTACCGAGGAGATCTGCC  
GCC**CGATCGCC**

ATGTCCAGAAATGACAAAGAACCCTTTTTGTGAAGTTTTAAAGTCTTCAGACAATCCAAATGTTTTT  
TAAAGCTCTCGAGTCCATAAAAGAATCCAAATCAGAAGAATATCTTCAGATTATTACAGAAGAAGAGGC  
ATTGAAGATAAAGGAGAATGATAGATCACTTTATCTGTGACCCTTTAGTGCCGTTGTCTTTGATCAC  
CTCAAAAAGCTTGGCTGCAGAATTGTTGGTCTCAAGTAGTCATATTTGTATGCACCACCAGCGATGTG  
TCCAAGAGCCGAACATCCAGTTTATAATATGGTTATGTCTGATGAACCATATCTGTACAAGTCTGGA  
AAAAGAAAAAGGAAGAAGTTCATAAATATGTACAAATGATGGCGGACGAGTATACAGAGACCTTAAT  
GTATCAGTAACTCACCTATTGCAGGAGAAGTTGGTAGCAAAAAATTTAGTTGCTGCAACCTGAAGA  
AACCTATTTGCTTCCCTCTGGATAAAAAACCTTTGGGAGAAGTCACAAGAGAAAAAATAACTAGATA  
TACTGATATAACATGGAAGATTCAAGTGTCTATTTTTCTGGTTGCATAATCTGTGTGACTGGCTTA  
TGTGGCTTAGACAGGAAAGAAGTTCAGCAACTCACAGTTAAGCATGGAGGTCAATACATGGGACAATTGA  
AAATGAATGAATGTACACACCTCATTGTGCAAGAACAAAAGGTCAGAAGTATGAGTGTGCCAAGAGATG  
GAATGTACACTGTGTGACCACACAGTGGTTTTTGTGACAGTATTGAGAAAGTTTTGTGTCAGGATGAATCC  
ATATCAAGACAGAACCCTAGACCAGAAGCAAGACTATGCCAAATCTTCAACTCCTACCAGCCAGATCA  
ACACAATTGATAGTCGTAATCTTTTCAGATGTGACCAATATTTCCAACATAAATGCAAGTTGCGTAAGTGA  
ATCAATATGTAATCACTTAACAGCAAACTGGAGCCTACACTGAAAACTAGAAAACTGGATGTGAGT  
GCATTTCAAGCACCTGAAGATTTATTAGATGGTTGTGCGGATATATCTTTGCGTTTTAGTGGCAGAAAGC  
TAGATAAACTGAGAAGACTTATTAACAGTGGAGGTGGAGTTTCGTTTTAACAGCTAAATGAAGATGTAAC  
TCATGTTATTGTGGGAGATTATGATGATGAATTGAAGCAGTTTTGGAATAAATCAGCCCACAGGCCTCAT  
GTAGTGGGAGCAAAGTGGTTGCTAGAGTGTTCAGTAAAGTTATATGCTTTCTGAAGAACCATATATCC  
ATGCTAATTACCAGCCAGTGGAAATCCAGTTTCACATAAGCCTGAAAGTAAAGCAGCTCTTTAAAAAA  
GAAGAACAGCAGCTTCTCTAAGAAAGACTTTGCTCCTAGTAAAAGCATGAGCAAGCTGATGAAGATCTG



[View online »](#)

CTCTCTCAATATGAAAATGGTAGCTCCACAGTAGTTGAGGCTAAGACGTCTGAAGCCAGGCCCTTTAATG  
ATTCTACTCATGCTGAGCCCTTGAATGATTCTACTCACATTTCTTTGCAAGAAGAAAACCAAGTCTTCTGT  
CAGTCATTGTGTCCCTGATGTTTCTACAATTACTGAAGAAGGCTTATTTAGCCAAAAGAGTTTCTTGT  
TTGGGTTTTAGTAATGAAAATGAATCTAACATCGCAAACATCATAAAAAGAAAATGCTGGGAAAATCATGT  
CCCTTCTGAGCAGAACTGTTGCGGATTATGCTGTGGTTCTCTGCTGGGGTGTGAAGTGGAGCCACTGT  
GGGAGAAGTTGTTACAAAATACATGGCTGGTTACTTGCATAGACTATCAGACTTTGTTTGATCCAAAGTCG  
AATCCTCTCTTACACCAGTCCAGTAATGACAGGAATGACTCCTTTAGAGGATTGTGTTATTTTCATTTA  
GCCAGTGTGCTGGAGCAGAAAAGAGTCTTTAACATTCCCTAGCAAACCTCCTGGAGCAAGTGTTCGAAGA  
ATACTTTGTTTCGCAAATCCAATGCAAAGAAAGGCATGTTTGCAGTACTCATCTTATACTGAAAAGACGT  
GGTGGCTCTAAATATGAAGCTGCAAAGAAGTGGAAATTTACCTGCCGTTACTATAGCTTGGCTGTTGGAGA  
CTGCTAGAACGGGAAAGAGAGCAGACGAAAGCCATTTTCTGATTGAAAATCAACTAAAGAAGAACGAAG  
TTTGGAAACAGAAATAACAAATGGAATCAATCTAAATTCAGATACTGCAGAGCATCTGGCACACGCCTG  
CAAACCTCACAGAAAACCGTCGTTACACCTTTAGATATGAACCGCTTTCAGAGTAAAGCTTTCCTGCTG  
TGGTCTCACAAACATGCCAGACAGGTCGACGCTCCCCAGCAGTAGGACAACCCTTCAGAAGGAGCCCTC  
GTTACACCTGGATACACCATCAAAATTCCTGTCCAAGGACAAACTCTTCAAGCCTCCTTTGATGTGAAG  
GATGCACTTGCAGCCTTGAAAACCTCCAGGACGTCCCAGCCAACAGAAAAGGAAAACCGAGTACGCCACTCT  
CAGAAGTTATTGTCAAAAACCTTGAACCTTGCTTTGGCAAATAGCTCTCGAAATGTGTGCTCTTTCTGC  
CAGCCCTCAACTGAAAGAGGCCAGTCCAGAGAAGGAAGAGCCCAAAGCCACTTCACAAAGTAGTGGTA  
TGTGTTAGTAAAAAACTCAGTAAGAAGCAGAGTGAACAAATGGGATCGCAGCCTCTCTAGGAGCAGATT  
ACAGGTGGAGTTTTGATGAAACAGTACTCATTTTCACTATCAAGGGCGGCCAAATGACACTAATCGGGA  
GTATAATCTGTAAAAGAAAGAGGAGTACACATGTTTCCGAGCACTGGCTTTTAGATTGTGCCAAAGAG  
TGTAACATCTTCTGAATCTCTTTATCCACATACTTATAATCCCAAAATGAGCTTGATATCAGCGCAG  
TGCAAGATGGCCGGCTCTGTAATAGTCGACTACTCAGCTGTGTCTTCAACAAAGGATGATGAGCCAGA  
TCCTTTGATTTTGAAGAAGAAATGATGTAGACAATATGGCCACCAATAATAAAGAGTCAGCACCATCAAA  
GGAAGTGGAAAGAAATGACTCTAAAGGAGTTCTGACACAGACCTTAGAGATGAGAGAGAATTTTCAGAAGC  
AGTTACAGGAGATAATGTCTGCAACATCAATAGTAAAACCCCAAGGGCAGAGGACTTCCCTTTCAAGAAG  
TGGTTGTAAACAGCGCATCTTCAACCCCTGACAGCACTCGCTCTGCTCGCAGTGGACGAAGTAGAGTCTTA  
GAGGCACTGAGGCAGTCTCGTCAGACAGTACCTGATGTCAACACAGAGCCTTCCCAAAATGAACAGATCA  
TTTGGGATGACCCCTACAGCAAGGGAGGAGAGCAAGGCTTGGCAGCAATTTGCAGTGGCCTAGTTGTCC  
CACACAATACTCTGAGCTTCAGGTTGACATTCAAAACTTGAGGATTCTCCTTTTCAAAAGCCTTTACAT  
GATTCAGAAATTGCTAACAGGCTGTCTGTGATCCTGAAACATACGTGTGACTGAAGCTCCCAACACC  
CAATCTCTGAAGAACTGGAACCTCCATAAAAGACAGCCACCTGATCCCTACGCCCTCAAGCCCCAGTAT  
TGCCCTTCCACTCGCAACCCCTGTGGCTCCGCACCCTAGAGAAAAGATTATAACGATAGAGGAGACT  
CATGAAGAATTAACAAAACAGTACATATTTCAAGTTATCATCTCTGAATCCTCAAGAACGTATTGACTATT  
GTCATCTGATTGAGAACTAGGTGGATTGGTGATAGAAAAGCAGTGCTTTGATCCACCTGTACACACAT  
TGTTGTGGGACATCCACTTCGAAACGAGAAGTATTTAGCCTCAGTGGCAGCTGGGAAGTGGGTGCTTCAT  
CGCTCCTACCTTGAAGCCTGCAGGACTGCTGGACACTTCGTGCAGGAAGAAGACTATGAATGGGGAAGTA  
GTTCCATACTTGATGTTCTGACTGGAATCAATGTACAGCAACGAAGACTAGCACTTGCAGCAATGAGATG  
GAGAAAAAAAATCCAGCAAAGACAAGAATCTGGCATTGTTGAGGGAGCATTAGTGGGTGGAAGGTTATT  
TTACATGTGGATCAGTCTCGAGAAGCAGGCTTCAAACGCCTTCTCAGTACAGGAGGCAAAAGGTGCTAC  
CTGGTCATTCTGTACCTTTATTTAAAGAGGCCACACATCTTTTTCTGACTTGAATAAACTGAAACCAGA  
TGACTCAGGAGTTAATATAGCAGAAGCTGCTGCCAGAACGTGTACTGCTTGAGAACAGAATACATTGCT  
GATTATCTCATGCAGGAATCACCTCCTCATGTAGAAAATTAAGTCTACCAAGGCTATTTTCATTTATTC  
AGAATAAAGGAACCTGGGACTGGATTATCACAAAAGAGGAAAGCTCCTACAGAAAAAATAAAATCAA  
ACGACCTAGAGTACAC

ACGCGTACGCGGCCGCTCGAG - GFP Tag - GTTTAA

**Protein Sequence:** >RG218584 representing NM\_007027  
 Red=Cloning site Green=Tags(s)

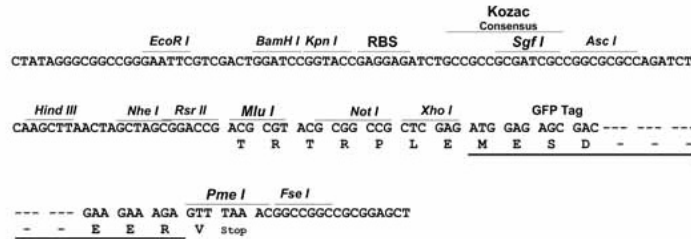
```
MSRNDKEPFFVKFLKSSDNSKCFKALESIKEFQSEYEQIITEEEALKIKENDRSLYICDPFSGVVFDDH
LKKLGCRIVGPQVVIFCMHHQRCVPRAEHPVYVMMSDVTISCTSLKEKEKREEVHKYVQMMGGRVYRDLN
VSVTHLIAGEVGSKKYLVAANLKKPILLPSWIKTLWEKSQEKKITRYTDINMEDFKCPIFLGCIICVTGL
CGLDRKEVQQLTVKHGGQYMGQLKMNECTHLIVQEPKGQKYECARWNVHCVTQTQWFFDSIEKGFCDQDES
IYKTEPRPEAKTMPNSSTPTSQINTIDSRTLSDVSNISININASCVSESI CNSLNSKLEPTLENLENLDVS
AFQAPEDLLDGCRIYLCGFSGRKLDKLRRLINSGGGVRFNQLNEDVTHVI VGDYDDELKQFVNKSAHRPH
VVGAKWLLCEFSKGYMLSEEPYIHANYQPVEIPVSHKPEKAALLKKNSSFSKKDFAPSEKHEQADEDL
LSQYENGSSSTVVEAKTSEARPFNDSTHAEPLNDSTHISLQEEQSSVSHCVDPVSTITEEGLFSQKSFLV
LGFSENENESNIANI IKENAGKIMSLLSRTVADYAVVPLL GCEVEATVGEVVTNTWLVT CIDYQTLFDPKS
NPLFTPVPVMTGMPLEDCVISFSQCAGAEKESL TFLANLL GASVQEYFVRKSNAKKGMFASTHLILKER
GGSKYEAAKKWNLP AVTIAWLL ETARTGRADESHFLIENSTKEERSLETEITNGINLNSDTAEHPGTRL
QTHRKT VVTP LDMNRFQSKAFRAVVSQHARQVAASPAVGQPLQKEPSLHLDTPSKFLSKDKL FKPSFDVK
DALAALETPGRPSQQKRKPSTPLSEVIVKNLQLALANSSRNAVALSASPQLKEAQSEKKEEAPKPLHKVVV
CVSKKLSKKQSELNIAASLGADYRWSFDETVTHFIYQGRPNDTNREYKSVKERVHIVSEHWLLDCAQE
CKHLPESLYPHTYNPKMSLDISAVQDGRLCNSRLLSAVSSTKDDEPDPLILEENDVDNMTNKNKESAPSN
GSGKNSDKGVL TQ TLEMREN FQKQLQEIMSATSI VKPQGQRTSLSRSGCNSASSTPDSTRSARSGRSVL
EALRQSRQTVPDVNTPEPSQNEQI IWDPTAREERARLASNLQWPSCPTQYSELQVDIQNLEDSPFQKPLH
DSEIAKQAVCDP GNIRVTEAPKHPISSELETP IKDSHL IPTPQAPSI AFPLANPPVAPHPREKIIITIEET
HEELKKQYIFQLSSLNPQERIDYCHLIEKLGGLVIEKQCFDPTCTHIVVGHPLRNEKYLASVAAGKWVLH
RSYLEACRTAGHFVQEEDYEWGSSILDVLTGINVQRRLLAAMRWKRIQQRQESGIVEGAFSGWKVI
LHVDQSR EAGFKRLLQSGGAKVLP GHSVPLFKEATHLFS DLNKLKPD DSGVNIAEAAAQNVYCLRTEYIA
DYLMQESPPHVENYCLPEAISFIQNNKELGTGLSQKRKAPTEKNKIKRPRVH
```

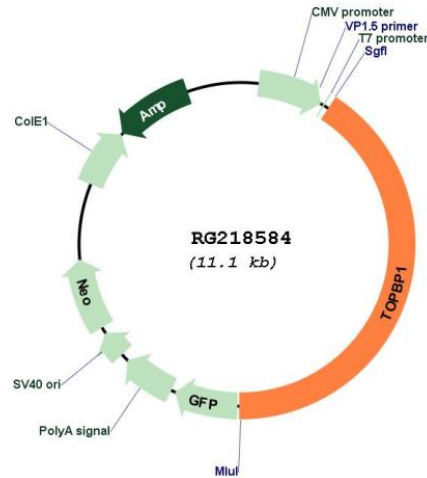
TRTRPLE - GFP Tag - V

**Restriction Sites:** SgfI-MluI

**Cloning Scheme:**

Cloning sites used for ORF Shutting:



**Plasmid Map:**


**ACCN:** NM\_007027

**ORF Size:** 4566 bp

**OTI Disclaimer:** Due to the inherent nature of this plasmid, standard methods to replicate additional amounts of DNA in E. coli are highly likely to result in mutations and/or rearrangements. Therefore, OriGene does not guarantee the capability to replicate this plasmid DNA. Additional amounts of DNA can be purchased from OriGene with batch-specific, full-sequence verification at a reduced cost. Please contact our customer care team at [custsupport@origene.com](mailto:custsupport@origene.com) or by calling 301.340.3188 option 3 for pricing and delivery.

The molecular sequence of this clone aligns with the gene accession number as a point of reference only. However, individual transcript sequences of the same gene can differ through naturally occurring variations (e.g. polymorphisms), each with its own valid existence. This clone is substantially in agreement with the reference, but a complete review of all prevailing variants is recommended prior to use. [More info](#)

**OTI Annotation:** This clone was engineered to express the complete ORF with an expression tag. Expression varies depending on the nature of the gene.

<b>Components:</b>	The ORF clone is ion-exchange column purified and shipped in a 2D barcoded Matrix tube containing 10ug of transfection-ready, dried plasmid DNA (reconstitute with 100 ul of water).
<b>Reconstitution Method:</b>	<ol style="list-style-type: none"><li>1. Centrifuge at 5,000xg for 5min.</li><li>2. Carefully open the tube and add 100ul of sterile water to dissolve the DNA.</li><li>3. Close the tube and incubate for 10 minutes at room temperature.</li><li>4. Briefly vortex the tube and then do a quick spin (less than 5000xg) to concentrate the liquid at the bottom.</li><li>5. Store the suspended plasmid at -20°C. The DNA is stable for at least one year from date of shipping when stored at -20°C.</li></ol>
<b>RefSeq:</b>	<a href="#">NM_007027.4</a>
<b>RefSeq Size:</b>	5378 bp
<b>RefSeq ORF:</b>	4569 bp
<b>Locus ID:</b>	11073
<b>UniProt ID:</b>	<a href="#">Q92547</a>
<b>Cytogenetics:</b>	3q22.1
<b>Domains:</b>	BRCT
<b>Gene Summary:</b>	This gene encodes a binding protein which interacts with the C-terminal region of topoisomerase II beta. This interaction suggests a supportive role for this protein in the catalytic reactions of topoisomerase II beta through transient breakages of DNA strands. [provided by RefSeq, Jul 2008]