

Product datasheet for **RG218582**

NR2C1 (NM_003297) Human Tagged ORF Clone

Product data:

Product Type:	Expression Plasmids
Product Name:	NR2C1 (NM_003297) Human Tagged ORF Clone
Tag:	TurboGFP
Symbol:	NR2C1
Synonyms:	TR2
Mammalian Cell Selection:	Neomycin
Vector:	pCMV6-AC-GFP (PS100010)
E. coli Selection:	Ampicillin (100 ug/mL)



[View online »](#)

ORF Nucleotide Sequence:

>RG218582 representing NM_003297
 Red=Cloning site Blue=ORF Green=Tags(s)

TTTTGTAATACGACTCACTATAGGGCGGCCGGAATTCGTCGACTGGATCCGGTACCGAGGAGATCTGCC
 GCC**CGGATCGCC**

ATGGCAACCATAGAAGAAATTGCACATCAAATTATTGAACAACAGATGGGAGAGATTGTTACAGAGCAGC
 AAAGTGGCAGAAAAATCCAGATTGTGACAGCACTTGATCATAATACCCAAGGCAAGCAGTTCATTCTGAC
 AAATCACGACGGCTCTACTCCAAGCAAAGTCATTCTGGCCAGGCAAGATCCACTCCGGGAAAAAGTTTTTC
 CTTAACAATCCAGATGCAGCAGGTGTCAACCAGTTATTTTTTACCCTCTGATCTGTCTGCACAACACC
 TGCAGCTCCTAACAGATAATTCTCCAGACCAAGGACCAAATAAGGTTTTTGTCTTTGCGTAGTATGTGG
 AGACAAAGCATCAGGACGTCATTATGGAGCAGTAACTTGTGAAGGCTGCAAAGGATTTTTTAAAAGAAGC
 ATCCGAAAAAATTTAGTATATTCATGTCGAGGATCAAAGGATTGTATTATTAATAAGCACCACCGAAACC
 GCTGTCAATACTGCAGGTTACAGAGATGTATTGCGTTTGAATGAAGCAAGACTCTGTCCAATGTGAAAG
 AAAACCCATTGAAGTATCACGAGAAAAATCTTCCAAGTGTCCGCTTCAACAGAAAAAATCTATATCCGA
 AAGGACCTTCGTAGCCATTAAGTCAACTCCAATTTTGTAAACAGATAGTAAAAGTACAAGGTCAACAG
 GACTGTTAGATTCAGGAATGTTCAATATTCATCCATCTGGAGTAAAAACTGAGTCAGCTGTGCTGAT
 GACATCAGATAAGGCTGAATCATGTGAGGAGATTTAAGTACATTGGCCAATGTGGTTACATCATTAGCG
 AATCTTGGAAAAACTAAAGATCTTTCTCAAAATAGTAATGAAATGTCTATGATTGAAAGCTTAAGCAATG
 ATGATACCTCTTTGTGTGAATTTCAAGAAATGCAGACCAACGGTGTGTTTCAAGGGCATTGACACTCT
 TGCAAAAGCATTGAATCCTGGAGAGACACAGCCTGCCAGAGCTCAGTAGCGGCATGGAAGGAAGTGTA
 CACCTAATCACTGGAGATTCAAGCATAAATTACACCGAAAAAGAGGGGCCACTTCTCAGCGATTACATG
 TAGCTTTTCAAGGCTCACCATGCCTTCTCCTATGCCTGAGTACCTGAATGTGCACTACATTGGGGAGTCTGC
 CTCCAGACTGCTGTTCTTATCAATGCACTGGGCACTTTGATTCTTCTTTCCAGGCTCTAGGGCAAGAA
 AACAGCATATCACTGGTGAAGCTTACTGGAATGAACTTTTTACTCTTGGTCTTGCCAGTGTGCAAG
 TGATGAATGTAGCAACTATATTAGCAACATTTGTCAATTGTCTTCACAATAGTCTTCAACAGATAAAAT
 GTCAACAGAAAGAAGAAAATTATTGATGGAGCACATCTTCAAACTACAGGAGTTTTGTAACAGCATGGTT
 AAAGTCTGATTGATGGATACGAATATGCCTACCTGAAGGCAATAGTACTCTTCAAGTCCAGATCATCCAA
 GCCTAGAAAACATGGAAGTATAGAGAAATTTCAAGAAAAGGCTTATGTGGAATTCAGATTATATAAC
 CAAAACATATCCAGATGACACCTACAGGTTATCCAGACTACTACTCAGATTGCCAGCTTTAAGACTGATG
 AATGCTACCATCACTGAAGAATGTTTTTCAAAGGTCTCATTGGCAATATACGAATTGACAGTGTATCC
 CACATATTTGAAAATGGAGCCTGCAGATTATAACTCTCAATAATTGGTCACAGCATT

ACGCGTACGCGGCCGCTCGAG - GFP Tag - GTTTAA

Protein Sequence:

>RG218582 representing NM_003297
 Red=Cloning site Green=Tags(s)

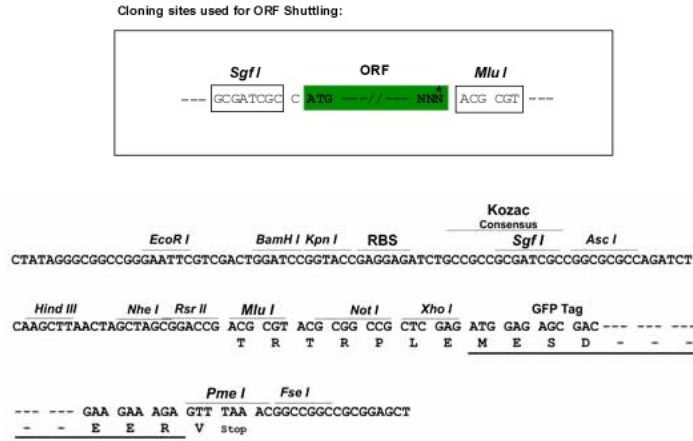
MATIEEIAHQIIEQQMGEIVTEQQTGQKIQIVTALDHNTQGKQFILTNHDGSTPSKVILARQDSTPGKVF
 LTTTPDAAGVNLFFFTTDLAQHLQLLTDNSPDQGNKVFVLCVCGDKASGRHYGAVTCEGCKGFFKRS
 IRKNLVYSCRGSKDCIINKHHRNRCQYCRQRCIAFGMKQDSVQCERKPIEVSREKSSNCAASTEKIYIR
 KDLSRPLTATPTFVTDSESTRSTGLLDSGMFMNIHPSGVKTESAVLMTSDKAESCQGDLSLANVVTSLA
 NLGKTKDLSQNSNEMSMIESLSDNDTSLCEFQEMQTNQDVSRAFDTLAKALNPGESTACQSSVAGMEGSV
 HLITGDSSINYTEKEGPLLSDSHVAFRLTMPSPMPEYLVNHYIGESASRLLFLSMHWALSIPSFQALGQE
 NSISLVKAYWNEFLTLGLAQCWQVMNVATILATFVNCLHNSLQDKMSTERRKLLMEHIFKLQEFCSMV
 KLCIDGYEYAYLKAIVLFSPPHPSLENMELIEKFQEKAYVEFQDYITKTYPDDTYRLSRLRLPALRLM
 NATITEELFFKGLIGNIRIDSVIPHILKMEPADYNSQIIGHSI

TRTRPLE - GFP Tag - V

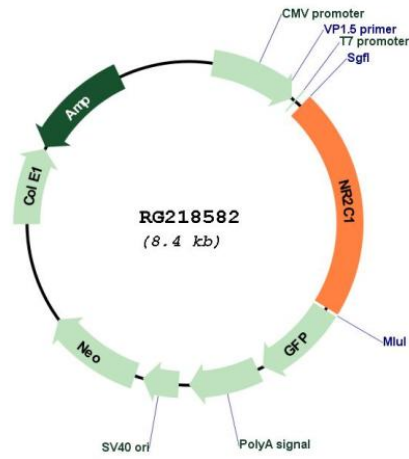
Restriction Sites:

Sgfl-MluI

Cloning Scheme:



Plasmid Map:



ACCN: NM_003297
 ORF Size: 1809 bp

OTI Disclaimer:	<p>Due to the inherent nature of this plasmid, standard methods to replicate additional amounts of DNA in E. coli are highly likely to result in mutations and/or rearrangements. Therefore, OriGene does not guarantee the capability to replicate this plasmid DNA. Additional amounts of DNA can be purchased from OriGene with batch-specific, full-sequence verification at a reduced cost. Please contact our customer care team at custsupport@origene.com or by calling 301.340.3188 option 3 for pricing and delivery.</p> <p>The molecular sequence of this clone aligns with the gene accession number as a point of reference only. However, individual transcript sequences of the same gene can differ through naturally occurring variations (e.g. polymorphisms), each with its own valid existence. This clone is substantially in agreement with the reference, but a complete review of all prevailing variants is recommended prior to use. More info</p>
OTI Annotation:	<p>This clone was engineered to express the complete ORF with an expression tag. Expression varies depending on the nature of the gene.</p>
Components:	<p>The ORF clone is ion-exchange column purified and shipped in a 2D barcoded Matrix tube containing 10ug of transfection-ready, dried plasmid DNA (reconstitute with 100 ul of water).</p>
Reconstitution Method:	<ol style="list-style-type: none">1. Centrifuge at 5,000xg for 5min.2. Carefully open the tube and add 100ul of sterile water to dissolve the DNA.3. Close the tube and incubate for 10 minutes at room temperature.4. Briefly vortex the tube and then do a quick spin (less than 5000xg) to concentrate the liquid at the bottom.5. Store the suspended plasmid at -20°C. The DNA is stable for at least one year from date of shipping when stored at -20°C.
RefSeq:	<p>NM_003297.1, NP_003288.1</p>
RefSeq Size:	<p>4068 bp</p>
RefSeq ORF:	<p>1812 bp</p>
Locus ID:	<p>7181</p>
UniProt ID:	<p>P13056</p>
Cytogenetics:	<p>12q22</p>
Domains:	<p>HOLI, zf-C4</p>
Protein Families:	<p>Druggable Genome, Nuclear Hormone Receptor, Transcription Factors</p>
Gene Summary:	<p>This gene encodes a nuclear hormone receptor characterized by a highly conserved DNA binding domain (DBD), a variable hinge region, and a carboxy-terminal ligand binding domain (LBD) that is typical for all members of the steroid/thyroid hormone receptor superfamily. This protein also belongs to a large family of ligand-inducible transcription factors that regulate gene expression by binding to specific DNA sequences within promoters of target genes. Multiple alternatively spliced transcript variants have been described, but the full-length nature of some of these variants has not been determined. [provided by RefSeq, Jul 2008]</p>