

Product datasheet for **RG218574**

BPY2 (BPY2C) (NM_001002761) Human Tagged ORF Clone

Product data:

Product Type: Expression Plasmids
Product Name: BPY2 (BPY2C) (NM_001002761) Human Tagged ORF Clone
Tag: TurboGFP
Symbol: BPY2C
Synonyms: VCY2C
Mammalian Cell Selection: Neomycin
Vector: pCMV6-AC-GFP (PS100010)
E. coli Selection: Ampicillin (100 ug/mL)
ORF Nucleotide Sequence: >RG218574 representing NM_001002761
Red=Cloning site **Blue**=ORF **Green**=Tags(s)

TTTTGTAATACGACTCACTATAGGGCGGCCGGAATTCGTCGACTGGATCCGGTACCGAGGAGATCTGCC
GCC**CGATCGCC**

ATGATGACGCTTGTCCCCAGAGCCAGGACACGTGCAGGACAGGATCATTACTCTCATCCCTGCCCCAGAT
TTTCACAGGTGCTGTTACAGAGGGCATCATGACATATTGCTTGACAAAGAACCTAAGTGATGTTAATAT
TCTGCATAGGTTGCTAAAAATGGGAATGTGAGAAATACCTTGCTTCAGTCCAAAGTGGGCTTGCTGACA
TATTATGTGAAACTGTACCCGGTGAAGTGACTCTTCTGACTAGGCCAGCATACAAATGAGATTATGCT
GTATCACTGGCTCAGTGTGAGGCCAGATCACAGAAG

ACGCGTACGCGGCCGCTCGAG - GFP Tag - GTTTAA

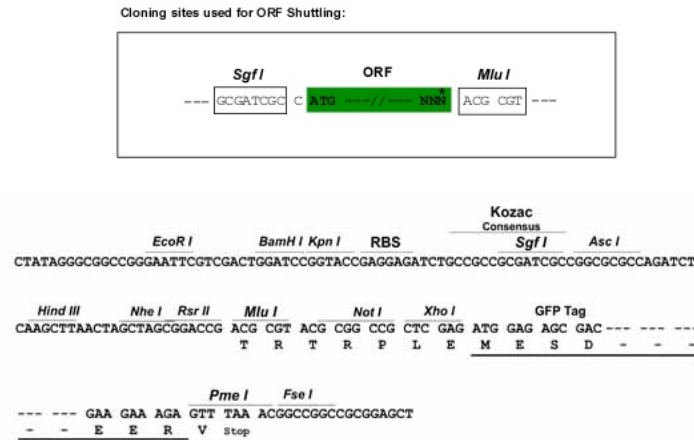
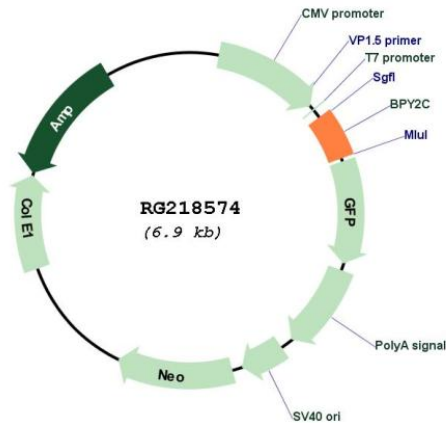
Protein Sequence: >RG218574 representing NM_001002761
Red=Cloning site **Green**=Tags(s)
MRTLVPRARTRAGQDHYSHPCPRFSQVLLTEGIMTYCLTKNLSVNIHLRLLKNGNVRNTLLQSKVGLLT
YYVKLYPGEVTLTRPSIQMLCCITGSVSRPRSQK

TRTRPLE - GFP Tag - V

Restriction Sites: Sgfl-MluI



[View online »](#)

Cloning Scheme:

Plasmid Map:


ACCN: NM_001002761

ORF Size: 318 bp

OTI Disclaimer: The molecular sequence of this clone aligns with the gene accession number as a point of reference only. However, individual transcript sequences of the same gene can differ through naturally occurring variations (e.g. polymorphisms), each with its own valid existence. This clone is substantially in agreement with the reference, but a complete review of all prevailing variants is recommended prior to use. [More info](#)

OTI Annotation:	This clone was engineered to express the complete ORF with an expression tag. Expression varies depending on the nature of the gene.
Components:	The ORF clone is ion-exchange column purified and shipped in a 2D barcoded Matrix tube containing 10ug of transfection-ready, dried plasmid DNA (reconstitute with 100 ul of water).
Reconstitution Method:	<ol style="list-style-type: none">1. Centrifuge at 5,000xg for 5min.2. Carefully open the tube and add 100ul of sterile water to dissolve the DNA.3. Close the tube and incubate for 10 minutes at room temperature.4. Briefly vortex the tube and then do a quick spin (less than 5000xg) to concentrate the liquid at the bottom.5. Store the suspended plasmid at -20°C. The DNA is stable for at least one year from date of shipping when stored at -20°C.
RefSeq:	<u>NM_001002761.1</u> , <u>NP_001002761.1</u>
RefSeq Size:	1206 bp
RefSeq ORF:	321 bp
Locus ID:	442868
UniProt ID:	<u>O14599</u>
Cytogenetics:	Yq11.23
Gene Summary:	This gene is located in the nonrecombining portion of the Y chromosome, and expressed specifically in testis. The encoded protein interacts with ubiquitin protein ligase E3A and may be involved in male germ cell development and male infertility. Three nearly identical copies of this gene exist on chromosome Y; two copies are part of a palindromic region. This record represents the more telomeric copy within the palindrome. [provided by RefSeq, Jul 2008]