

Product datasheet for **RG218561**

CPEB2 (NM_182485) Human Tagged ORF Clone

Product data:

Product Type:	Expression Plasmids
Product Name:	CPEB2 (NM_182485) Human Tagged ORF Clone
Tag:	TurboGFP
Symbol:	CPEB2
Synonyms:	CPE-BP2; CPEB-2; hCPEB-2
Mammalian Cell Selection:	Neomycin
Vector:	pCMV6-AC-GFP (PS100010)
E. coli Selection:	Ampicillin (100 ug/mL)



[View online »](#)

ORF Nucleotide Sequence:

>RG218561 representing NM_182485
 Red=Cloning site Blue=ORF Green=Tags(s)

TTTTGTAATACGACTCACTATAGGGCGGCCGGAATTCGTGACTGGATCCGGTACCGAGGAGATCTGCC
 GCC**CGCATCGCC**

ATGCCCGCCAGCCCCGACTCAGAGAACGGTCTACCCCGGCTGCCGTGTCATGAACCCGGCT
 TCTTCCCTAGCTTCTCGCCGTGTGCGCCGACGGCTGCACTGGGCTCAGGTTCCGACGAGCGCGCGG
 CGGCGCGGCTTTCGCGGCCCTTCTCGCTACCCTGTGCCCTCCGCGCGCCCGCATGAATATA
 CCTCAACAGCAGCCCCCGCCGCGCGCGCAGCAGCCGAGAGCCGGAGGTCGCCCCGAGCCCGC
 AGCTCCAGCAGCAGCACCAGGCGCGCGCCGCTTCTGCAGCAGAGGAACTCTATAACCACCA
 GCCTCTTCTGAAACAGTCTCCCTGGAGCAACCATCAGAGCAGTGGCTGGGCACTGGAAGTATGCTGG
 GGAGCAATGCATGGCAGAGATCATCGTAGAACCGAAACATGGGAATCCAGGAACTATGAATCAGAT
 CTCCATTGAAGAAACCGTTTTCTGGTAAATGTCATAGCACCCGAAATTTACTCGCTCACTCCACT
 GACTCCAAAATCTGGATTGAAGATAATGTGTTGAGAACAGACAACAATAGTAATACACTTTACCTTA
 CAGGTGAGATCTAGTTTGCAATTGCCAGCTGGGGCTCAGATTCCTCAAGATAGTTGGTGCATCGAG
 CCGGAACATCCAGAATAGACCAGGATCGAAGTAGAATGTATGACAGTTTGAATATGCACTTTTGAAAA
 TTCCCTTATCGATATTATGAGAGCAGAGCATGATCCTCTTAAGGGTCGATTGAGCTATCCACATCCAGGA
 ACTGACAACTGTGTGATGTTAAATGGTCGTTCTTCCCTTTTCCAATAGATGATGGCTTGCTTGATGATG
 GTCACAGTGATCAAGTTGGAGTTTTAAATTCACCCACCTGTTATTCAGCTCACAAAATGGAGAGCGAAT
 AGAACGCTTCTCTCGAAAAGTTTTGTTGGTGGTCTTCTCCAGATATTGATGAAGATGAAATAACTGCT
 AGCTTCAGAAGATTTGGCCCTTTGGTAGTAGATTGGCTCATAAAGCAGAAAGCAAGTCTATTTCCAC
 CAAAAGGCTATGCATTTCTCTTTCAAGAAGAGAGCTCAGTTCAGGCACTATTGATGCTTTGATTGA
 AGAAGATGGAAAACCTATCTGTGTGTTCTAGCCCTACTATCAAGGACAAACCAGTTCAAATACGTCCT
 TGGAAATTAAGTGATAGTATTTGTAATGGATGGTTCTCAGCCTTTGGATCCCCGAAAAACAATTTTG
 TTGGAGGTGTTCTAGGCCATTAAGGGCTGTGAACTTGCTATGATCATGGACCGGCTGTATGGTGGAGT
 TTGTTATGCAGGAATTGATACAGATCCTGAGCTAAAATACCCAAAAGGTGCTGGGCGAGTTGCTTTCTCC
 AATCAGCAGAGCTATATTGCTGCCATTAGTCTCGTTTGTTCAGCTCAGCATGGTGATATTGATAAAC
 GTGTGGAGGTAAGCCATATGTGCTAGATGACCAGATGTGTGATGAATGCCAGGGCGCACGCTGTGGTGG
 AAAATTTGCTCCCTTTTTTTGTGCAATGTCATTGCCTGCAGTATTACTGTGAGTTTTGTTGGCAAT
 ATCCACTCTCGTCTGGACGTGAGTTCATAAGCCATTGGTAAAGGAAGTGCTGATCGCCACGTCAGA
 TCCACTCCGCTGGAAC

ACGCGTACGCGGCCGCTCGAG - GFP Tag - GTTTAA

Protein Sequence:

>RG218561 representing NM_182485
 Red=Cloning site Green=Tags(s)

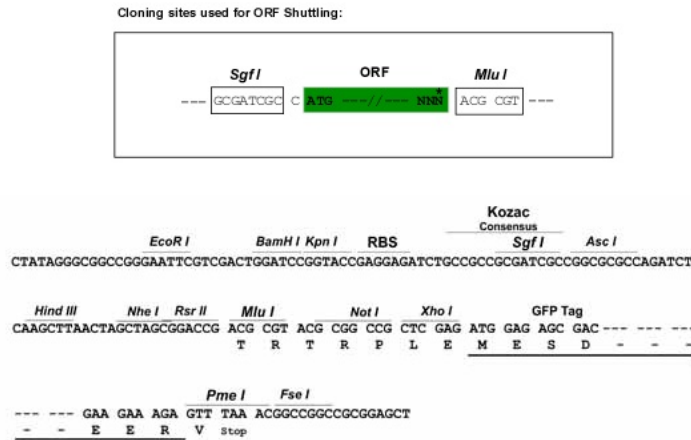
MPPSPDSENGFYPLPSSMNPAFFPSFSPVSPHGCTGLSVPTSGGGGGGFGGPFSAVPPPPPPAMNI
 PQQQPPPPAAPQQPQSRSPVSPQLQQHQAAAAAFLQQRNSYNHHQPLLKQSPWSNHQSSGWTGMSW
 GAMHGRDHRRTGNMIGIPGTMNQISPLKKPFSGNVIAPPKFTRSTPSLTPKSWIEDNVFRDNNSTLLPL
 QVRSSLQLPAWGSDSLQDSWCTAAGTSRIDQDRSRMYDSLNMHSLNSLIDIMRAEHDPLKGRLSYHPG
 TDNLLMLNGRSSLFPIDGLLDDGHSQVGVLSPTCYSAHQNGERIERFSRKVFVGLPPDIDEDEITA
 SFRRFGLVVDWPHKAESKSYFPPKGYAFLLFQEESSVQALIDACIEEDGKLYLCVSSPTIKDKPVQIRP
 WNLSDSDFVMDGSQPLDPRKTIFFVGGVPRPLRAVELAMIMDRLYGGVCYAGIDTDPELKYPKGAGRVAFS
 NQQSYIAAISARFVQLQHGDIDKRVEVKPYVLDDQMCDCEQGARCGGKFAFFFCANVTCLQYYCEFCWAN
 IHSRAGREFHKPLVKEGADRPRQIHFRWN

TRTRPLE - GFP Tag - V

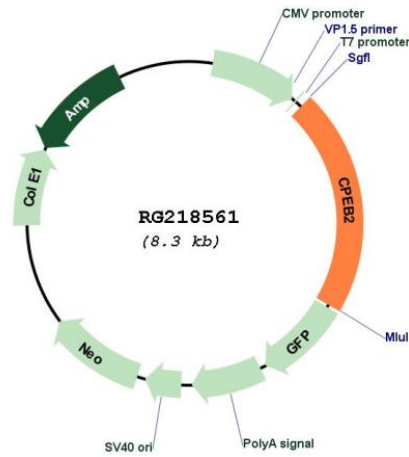
Restriction Sites:

SgfI-MluI

Cloning Scheme:



Plasmid Map:



ACCN: NM_182485

ORF Size: 1767 bp

OTI Disclaimer:	<p>Due to the inherent nature of this plasmid, standard methods to replicate additional amounts of DNA in E. coli are highly likely to result in mutations and/or rearrangements. Therefore, OriGene does not guarantee the capability to replicate this plasmid DNA. Additional amounts of DNA can be purchased from OriGene with batch-specific, full-sequence verification at a reduced cost. Please contact our customer care team at custsupport@origene.com or by calling 301.340.3188 option 3 for pricing and delivery.</p> <p>The molecular sequence of this clone aligns with the gene accession number as a point of reference only. However, individual transcript sequences of the same gene can differ through naturally occurring variations (e.g. polymorphisms), each with its own valid existence. This clone is substantially in agreement with the reference, but a complete review of all prevailing variants is recommended prior to use. More info</p>
OTI Annotation:	<p>This clone was engineered to express the complete ORF with an expression tag. Expression varies depending on the nature of the gene.</p>
Components:	<p>The ORF clone is ion-exchange column purified and shipped in a 2D barcoded Matrix tube containing 10ug of transfection-ready, dried plasmid DNA (reconstitute with 100 ul of water).</p>
Reconstitution Method:	<ol style="list-style-type: none">1. Centrifuge at 5,000xg for 5min.2. Carefully open the tube and add 100ul of sterile water to dissolve the DNA.3. Close the tube and incubate for 10 minutes at room temperature.4. Briefly vortex the tube and then do a quick spin (less than 5000xg) to concentrate the liquid at the bottom.5. Store the suspended plasmid at -20°C. The DNA is stable for at least one year from date of shipping when stored at -20°C.
RefSeq:	<p>NM_182485.1, NP_872291.1</p>
RefSeq Size:	<p>5627 bp</p>
RefSeq ORF:	<p>3081 bp</p>
Locus ID:	<p>132864</p>
UniProt ID:	<p>Q7Z5Q1</p>
Cytogenetics:	<p>4p15.32</p>
Gene Summary:	<p>The protein encoded by this gene is highly similar to cytoplasmic polyadenylation element binding protein (CPEB), an mRNA-binding protein that regulates cytoplasmic polyadenylation of mRNA as a trans factor in oogenesis and spermatogenesis. Studies of the similar gene in mice suggested a possible role of this protein in transcriptionally inactive haploid spermatids. Alternatively spliced transcript variants encoding distinct isoforms have been described. [provided by RefSeq, Jul 2008]</p>