

Product datasheet for **RG218549**

IQGAP1 (NM_003870) Human Tagged ORF Clone

Product data:

Product Type:	Expression Plasmids
Product Name:	IQGAP1 (NM_003870) Human Tagged ORF Clone
Tag:	TurboGFP
Symbol:	IQGAP1
Synonyms:	HUMORFA01; p195; SAR1
Mammalian Cell Selection:	Neomycin
Vector:	pCMV6-AC-GFP (PS100010)
E. coli Selection:	Ampicillin (100 ug/mL)
ORF Nucleotide Sequence:	>RG218549 representing NM_003870 Red=Cloning site Blue=ORF Green=Tags(s)

TTTTGTAATACGACTCACTATAGGGCGGCCGGAATTCGTCGACTGGATCCGGTACCGAGGAGATCTGCC
GCC**CGATCGCC**

ATGTCCGCCGAGACGAGGTTGACGGGCTGGCGTGGCCCGCCGCACTATGGCTCTGTCCTGGATAATG
AAAGACTTACTGCAGAGGAGATGGATGAAAGGAGACGTCAGAACGTGGCTTATGAGTACCTTTGTCATTT
GGAAGAAGCGAAGAGGTGGATGGAAGCATGCCTAGGGGAAGATCTGCCTCCACCACAGAAGTGGAGGAG
GGCTTAGGAATGGGTCTACCTTGCCAACTGGGAACCTCTTCTCTCCAAAGTAGTGTCCCTGAAAA
AAATCTATGATCGAGAACAGACCAGATACAAGGCGACTGGCTCCACTTTAGACACACTGATAATGTGAT
TCAGTGGTTGAATGCCATGGATGAGATTGGATTGCCTAAGATTTTTACCAGAACTACAGATATCTAT
GATCGAAAGAACATGCCAAGATGTATCTACTGTATCCATGCACACTCAGTTTGTACCTGTTCAAGCTAGGCC
TGGCCCTCAGATTCAAGACCTATATGGAAAGGTTGACTTCACAGAAGAAGAAATCAACAACATGAAGAC
TGAGTTGGAGAAGTATGGCATCCAGATGCCTGCCTTTAGCAAGATTGGGGCATCTTGGCTAATGAAGT
TCAGTGGATGAAGCCGATTACATGCTGCTGTTATTGCTATTAATGAAGCTATTGACCGTAGAATCCAG
CCGACACATTTGCAGCTTTGAAAAATCCGAATGCCATGCTTGTAAATCTGAAGAGCCCTTGGCATCCAC
TTACCAGGATATACTTTACCAGGCTAAGCAGGACAAAAATGACAAATGCTAAAAACAGGACAGAAAACTCA
GAGAGAGAAAGAGATGTTTATGAGGAGCTGCTCACGCAAGCTGAAATTCAGGCAATATAAACAAGTCA
ATACATTTCTGCATTAGCAAATATCGACCTGGCTTTAGAACAAGGAGATGCACTGGCCTTGTTCAGGGC
TCTGCAGTCAACGACCTGGGGCTTCGAGGACTGCAGCAACAGAATAGCGACTGGTACTTGAAGCAGCTC
CTGAGTGATAAACAGCAGAAGAGACAGAGTGGTCAGACTGACCCCTGCAGAAGGAGGAGCTGCAGTCTG
GAGTGGATGCTGCAAACAGTGTGCCAGCAATATCAGAGAAGATTGGCAGCAGTAGCACTGATTAATGC
TGCAATCCAGAAGGTGTTGCTGAGAAGACTGTTTTGAACTGATGAATCCCGAAGCCAGCTGCCCCAG
GTGTATCCATTTGCCCGGATCTCTATCAGAAGGAGCTGGCTACCCTGCAGCGACAAAGTCTGAACATA
ATCTACCCACCCAGAGCTCTGTGCGAGTGGAGATGTTGTATCGGTGGCCCTGATCAACAGGGCATT
GGATCAGGAGATGTGAATACAGTGTGGAAGCAATTGAGCAGTTCAGTTACTGGTCTTACCAATATTGAG



[View online »](#)

GAAGAAAAGTGTGAGAGGTATCTCGATGAGTTGATGAAACTGAAGGCTCAGGCACATGCAGAGAATAATG
 AATTCATTACATGGAATGATATCCAAGCTTGCCTGGACCATGTGAACCTGGTGGTCAAGAGGAACATGA
 GAGGATTTTAGCCATTGGTTAATTAATGAAGCCCTGGATGAAGGTGATGCCAAAAGACTCTGCAGGCC
 CTACAGATTCCTGCAGCTAAACTTGAGGGAGTCCCTGCAGAAGTGGCCAGCATTACCAAGACACGCTGA
 TTAGAGCGAAGAGAGAGAAAAGCCAGGAAATCCAGGATGAGTCAAGTGTGTTATGGTTGGATGAAATTCA
 AAGTGAATCTGGCAGTCCAACAAGACACCAAGAAGCACAGAAGTTTGCCTTAGGAATCTTTGCCATT
 AATGAGGCAGTAGAAAAGTGGTGTGTTGGCAAAACACTGAGTGCCTTCGCTCCCTGATGTTGGCTTGT
 ATGGAGTCATCCCTGAGTGTGGTAAAACCTTACCACAGTATCTTGTGCTGAAGCCAAGAAAAGAACTGGC
 AGTAGGAGATAATAACAGCAAGTGGGTGAAGCACTGGGTAAGAGTGGATATTATTATTACCACAATCTG
 GAGACCCAGGAAGGAGGATGGGATGAACCCCAAAATTTGTGCAAAATCTATGCAGCTTCTCGGGAGG
 AGATCCAGAGTCTATCTCTGGGTGACTGCCGCATATAACCGAGAACAGCTGTGGCTGGCCATGAAGG
 CCTGATCACCAGGCTGCAGGCTCGCTGCCGTGGATACTTAGTTCGACAGGAATCCGATCCAGGATGAAT
 TTCCTGAAGAAAACAAATCCCTGCCATCACCTGCATTAGTCCAGTGGAGAGGATACAAGCAGAAGAAGG
 CATATCAAGATCGTTAGCTTACCTGCGCTCCCACAAAGATGAAGTTGTAAGATTAGTCCCTGGCAAG
 GATGCACCAAGCTCGAAAGCGCTATCGAGATCGCTGCAGTACTCCGGGACCATATAAATGACATTATC
 AAAATCCAGGCTTTTATTCGGGCAAAACAAAGCTCGGGATGACTACAAGACTCTCATCAATGCTGAGGATC
 CTCTATGGTTGTGGTCCGAAAATTTGTCCACCTGCTGGACCAAAGTGACCAGGATTTTCAGGAGGAGCT
 TGACCTTATGAAGATGCGGGAAGAGGTTATCACCTCATTGTTCTAACCAGCAGCTGGAGAATGACCTC
 AATCTCATGGATATCAAAATGGACTGCTAGTGAATAAAGATTACGTTGCAGGATGTGGTTTCCACACA
 GTAAAAAACTTACCAAAAAAATAAGGAACAGTTGTCTGATATGATGATGATAAATAAACAGAAGGGAGG
 TCTCAAGGCTTTGAGCAAGGAGAAGAGAGAAGTTGGAAGCTTACCAGCACCTGTTTTATTTATGCAA
 ACCAATCCACCTATCTGGCCAAGTCAATTTTTCAGATGCCCCAGAACAAGTCCACCAAGTTCATGGACT
 CTGTAATCTTACACTCTACAACACTACGCGTCCAACCAGCGAGAGGAGTACCTGCTCGGGCTCTTTAA
 GACAGCACTCCAAGAGGAAATCAAGTCAAGGTAGATCAGATTCAAGAGATTGTGACAGGAAATCCCTACG
 GTTATTAATAAGTGTGTAAGTTTCAACCGTGGTCCCGTGGCCAGAATGCCCTGAGACAGATCTTGCC
 CAGTCTGGAAGGAAATATGGATGACAAATCTCTCAACATCAAAACTGACCCTGTGGATATTTACAAATC
 TTGGGTTAATCAGATGGAGTCTCAGACAGGAGAGGCAAGCAAACCTGCCCTATGATGTGACCCCTGAGCAG
 GCGCTAGCTCATGAAGAAGTGAAGACACGGCTAGACAGCTCCATCAGGAACATGCGGGCTGTGACAGACA
 AGTTTCTCTCAGCCATTGTCAGCTCTGTGGACAAAATCCCTTATGGGATGCGCTTATTGCCAAAGTGT
 GAAGGACTCGTTGCATGAGAAGTCCCTGATGCTGGTGAAGGATGAGCTGCTGAAGATTATGGTAACTTG
 CTTTATTATCGATACATGAATCCAGCCATTGTTGCTCCTGATGCCTTTGACATCATTGACCTGTCAGCAG
 GAGGCCAGCTTACCACAGACCAACGCGCAAATCTGGGCTCCATTGCAAAAATGCTTCAGCATGCTGCTTC
 CAATAAGATGTTTCTGGGAGATAATGCCCACTTAAAGCATTAATGAATATCTTTCCAGTCTACCAG
 AAATTCAGACGGTTTTTCCAAACTGCTTGTGATGTCCCAGAGCTTCCAGGATAAATTTAATGTGGATGAGT
 ACTCTGATTTAGTAACCCCTACCAAAACCAGTAATCTACATTTCCATTGGTGAAATCATCAACACCCACAC
 TCTCCTGTTGGATCACCAGGATGCCATTGCTCCGGAGCACAATGATCCAATCCACGAACTGCTGGACGAC
 CTCGGCGAGGTGCCCAACATCGAGTCCCTGATAGGGGAAAGCTCTGGCAATTTAATGACCCAAATAAGG
 AGGCACTGGCTAAGACGGAAGTGTCTCACCCGACCAACAAGTTCGACGTGCCTGGAGATGAGAATGC
 AGAAATGGATGCTCGAACCATCTTACTGAATACAAAACGTTTAAATGTGGATGTCATCCGGTTCCAGCCA
 GGAGAGACCTTGACTGAAATCCTAGAAAACACAGCCACCAGTGAACAGGAAGCAGAACATCAGAGAGCCA
 TGACAGAGACGTGCTATCCGTGATGCCAAAACACCTGACAAGATGAAAAGTCAAAATCTGTAAAGGAAGA
 CAGCAACCTCACTCTTCAAGAGAAGAAAGAGAAGATCCAGACAGGTTTAAAGAAGCTAACAGAGCTTGG
 ACCGTGGACCCAAAGAACAATAACAGGAACTGATCAACGACATTGCCAGGGATATTCGGAATCAGCGGA
 GGTACCGACAGAGGAGAAAGGCCGAACTAGTGAAGTGAACAGACATACGCTGCTGAACTCTAAGGC
 CACCTTTTATGGGAGCAGGTGGATTACTATAAAGCTATATCAAAACCTGCTTGGATAACTTAGCCAGC
 AAGGGCAAAGTCTCAAAAAGCCTAGGGAAATGAAAAGGAAAAGAAAAGCAAAAAGATTTCTCTGAAATATA
 CAGCAGCAAGACTACATGAAAAGGAGTCTTCTGGAATTTGAGGACCTGCAAGTGAATCAGTTAAAAA
 TGTTATATTTGAAATCAGTCCAACAGAAGAAGTTGGAGACTTCGAAGTGAAGCCAAATTCATGGGAGTT
 CAAATGGAGACTTTTATGTTACATTATCAGGACCTGCTGCAGCTACAGTATGAAGGAGTTGACGATGA
 AATTATTTGATAGAGCTAAAGTAAATGTCAACCTCCTGATCTTCTTCTCAACAAAAGTTCTACGGGAA
 G

AGCGGACCGACGCGTACGCGGCCGCTCGAG - GFP Tag - GTTTAA

Protein Sequence:

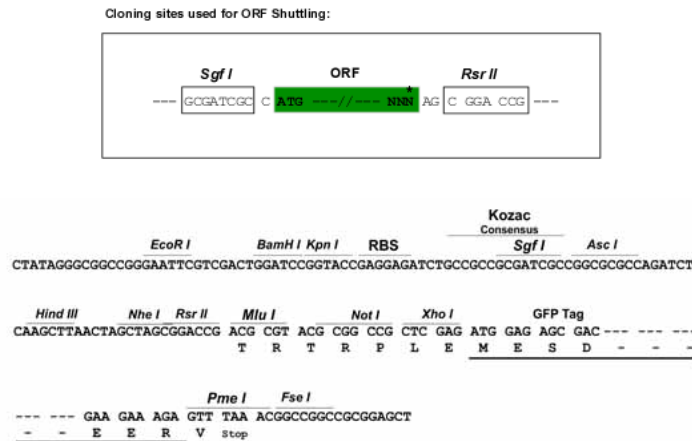
>RG218549 representing NM_003870
 Red=Cloning site Green=Tags(s)

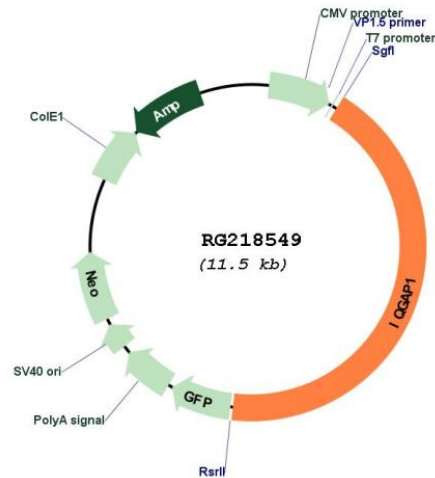
MSAADEV DGLGVARPHYGSVLDNERLTAEMDERRRQNVAYEYLCHLEEKRWMEACLGEDLPPTTELEE
 GLRNGVYLAKLGNFFSPKVVSLKKIYDREQTRYKATGLHFRHTDNVIQWLNAMDEIGLPKIFYPETTDIY
 DRKNMPRCIYCIHALSLYLFKLGLAPQIQDLYGKVDFTTEEINNMKTELEKYGIQMPAFSKIGGILANEL
 SVDEAALHAAVIAINEAIDRRIPADTFAALKNPNAVLNLEEPLASTYQDILYQAKQDKMTNAKNTENS
 ERERDVEEELLTQAEIQGNINKVNTFSALANIDLALAEQGDALALFRALQSPALGLRGLQQNSDWYKQL
 LSDKQQKRQSGQTDPLQKEELQSGVDAANSAQQYQRRLLAAVALINAAIQKGVAEKTVLELMNPEAQLPQ
 VYPFAADLYQKELATLQRQSPENHLTHPEL SVAVEMLSSVALINRALESGDVNTVWKQLSSSVTGLTNIE
 EENCQRYLDELMLKKAQAHAENNEFITWNDIQACVDHVNLVVQEEHERILAIGLINEALDEGDAQTLQA
 LQIPAAKLEGLVAEQHYQDTLIRAKREKAQEQDES AVLWLDIQQGIWQSNKDTQEAQKFAIGIFAI
 NEAVESGDVGTLSALRSPDVGLYGVIPCEGETYHSDLAEAKKKLAVGDNNSKWKHWKGGYYYYHNL
 ETQEGGWDEPPNFVQNSMQLSREEIQSSISGVTAAYNREQLWLANEGLITRLQARCRGYLVRQEFRSRMN
 FLKKQIPAITCIQSQRGKQKAYQDRLAYLRSHKDEVVKIQSLARMHQARKRYRDRQLQYFRDHINDII
 KIQA FIRANKARDDYKTLINAEDPPMVVVRKFVHLLDQSDQDFQEELDLMKMREEVITLIRSNQQLENDL
 NLMDIKIGLLVKNKITLQDVVSHSKLTKKNKEQLSDMMINKQKGLKALSKEKREKLEAYQHLFYLLQ
 TNPTYLAKLIFQMPQNKSTKFMDSVIFTLNYASNQREEYLLRLFKTALQEEIKSKVDQIQEIVTGNPT
 VIKMVVSFNRGARGONALRQILAPVVKIIMDDKSLNIKTDPVDIYKSWVNQMESQTEASKLPYDVTPEQ
 ALAHEEVKTRLDSSIRNMRVTDKFLSAIVSSVDKIPYGMRFIAKVLKDSLHEKFPDAGEDELLKIIIGNL
 LYYRYMNP AIVAPDAFDIIDLSAGGQLTTDQRRNLGSIKMLQHAASNKMF LGDNAHLSIINEYLSQSYQ
 KFRRFFQTACDVPELQDKFNVDEYSDLVTLTKPVIYISIGEIINTHTLLLDHQDAIPEHNDPIHELLDD
 LGEVPTIESLIGESSGNLNDPNKEALAKTEVSLTLTNKFDVPGDENAEMDARTILLNTRKRLIVDVIRFQP
 GETL TEILETPATSEQEAHQRAMQRRIRDAKTPDKMKKSKSVKEDSNLTLQEKKEKIQTGLKKLTELG
 TVDPKNKYQELINDIARDIRNQRRYRQRRKAELVKLQQTAAALNSKATFYGEQVDYKSYIKTCLDNLAS
 KGKVS KKP REMK GKSKKISLKYTAARLHEKGVLLIEDLQVNQFKNVIFEISPTEEVGFVEKAKFMGV
 QMETFMLHYQDLLQLQYEGVAVMKLFDRAKVVNLLIFLLNKKFYGK

SGPTRRRLE - GFP Tag - V

Restriction Sites:

SgfI-RsrII

Cloning Scheme:


Plasmid Map:


ACCN: NM_003870

ORF Size: 4971 bp

OTI Disclaimer: The molecular sequence of this clone aligns with the gene accession number as a point of reference only. However, individual transcript sequences of the same gene can differ through naturally occurring variations (e.g. polymorphisms), each with its own valid existence. This clone is substantially in agreement with the reference, but a complete review of all prevailing variants is recommended prior to use. [More info](#)

OTI Annotation: This clone was engineered to express the complete ORF with an expression tag. Expression varies depending on the nature of the gene.

Components: The ORF clone is ion-exchange column purified and shipped in a 2D barcoded Matrix tube containing 10ug of transfection-ready, dried plasmid DNA (reconstitute with 100 ul of water).

Reconstitution Method:

1. Centrifuge at 5,000xg for 5min.
2. Carefully open the tube and add 100ul of sterile water to dissolve the DNA.
3. Close the tube and incubate for 10 minutes at room temperature.
4. Briefly vortex the tube and then do a quick spin (less than 5000xg) to concentrate the liquid at the bottom.
5. Store the suspended plasmid at -20°C. The DNA is stable for at least one year from date of shipping when stored at -20°C.

RefSeq: [NM_003870.3](#), [NP_003861.1](#)

RefSeq Size: 7219 bp

RefSeq ORF: 4974 bp

Locus ID: 8826

UniProt ID: [P46940](#)
Cytogenetics: 15q26.1
Domains: IQ, RasGAP_C, WW, CH, RasGAP
Protein Families: Druggable Genome
Protein Pathways: Adherens junction, Regulation of actin cytoskeleton

Gene Summary: This gene encodes a member of the IQGAP family. The protein contains four IQ domains, one calponin homology domain, one Ras-GAP domain and one WW domain. It interacts with components of the cytoskeleton, with cell adhesion molecules, and with several signaling molecules to regulate cell morphology and motility. Expression of the protein is upregulated by gene amplification in two gastric cancer cell lines. [provided by RefSeq, Jul 2008]