

## Product datasheet for **RG218531**

### STXBP2 (NM\_006949) Human Tagged ORF Clone

#### Product data:

Product Type:	Expression Plasmids
Product Name:	STXBP2 (NM_006949) Human Tagged ORF Clone
Tag:	TurboGFP
Symbol:	STXBP2
Synonyms:	FHL5; Hunc18b; MUNC18-2; pp10122; UNC18-2; UNC18B
Mammalian Cell Selection:	Neomycin
Vector:	pCMV6-AC-GFP (PS100010)
E. coli Selection:	Ampicillin (100 ug/mL)



[View online »](#)

**ORF Nucleotide Sequence:**

>RG218531 representing NM\_006949  
 Red=Cloning site Blue=ORF Green=Tags(s)

TTTTGTAATACGACTCACTATAGGGCGGCCGGAATTCGTCGACTGGATCCGGTACCGAGGAGATCTGCC  
 GCC**CGGATCGCC**

ATGGCGCCCTCGGGCTGAAGGCGGTGGTGGGGAAAAAATTCTGAGCGGAGTTATTCGGAGTGTCAAGA  
 AGGATGGGGAGTGAAGGTGCTTATCATGGATCACCCAAGCATGCGCATCTTGCTTCTCTGCTGCAAAAT  
 GTCAGATATCCTGGCTGAGGGCATCACCATTTGTTGAAGACATCAACAAACGGCGGGAACCCATTCCCACT  
 CTGGAGGCCATTTATTTGCTGAGCCCCACGGAGAAGTCGGTTCAGGCCCTGATCAAAGACTTCCAGGGGA  
 CCCCAGCTTTACCTACAAAGCGGCCATATCTTCTTACCGACACCTGCCCGAGCCCCGTTCAGTGA  
 GCTAGGCCGCTCTCGTCTGGCAAAGGTGGTGAAGACGTTGAAGGAGATTCACCTTGCTTCTCCCTAC  
 GAGGCCAGGTGTTCTCCCTCGATGCTCCACAGCACCTACAACCTCTACTGCCCTTCCGGGCAGAGG  
 AGCGCACGCGGCAGCTCGAGGTGCTGGCCAGCAGATTGCCACGCTGTGCCACCCTGCAGGAGTACCC  
 GGCCATCCGCTACCGCAAGGGCCAGAGGACACAGCCAGTTGGCCACGCGCTCTGGCCAAGCTGAAC  
 GCCTTCAAGGCAGACACTCCAGTCTGGGCGAGGGCCAGAGAAAACCCGCTCCAGCTGCTGATAATGG  
 ACCGGGACGCTGACCCCGTGTCCCACTACTGCATGAGCTCACGTTCCAGGCCATGGCGTATGATCTGCT  
 GGACATAGAGCAGGACACATACAGGTATGAGACCACGGGCTGAGCGAGGCGCGGAGAAGGCCGCTTGT  
 CTGGACGAGGACGATGACTTGTGGGTGGAGCTTCCGCACATGCATATCGCAGATGTGTCCAAGAAGTCA  
 CGGAGCTCCTGAGGACCTTCTGTGAGAGCAAGAGGCTGACCACGGACAAGGCGAACATCAAAGACCTATC  
 CCAGATCTGAAAAGATGCCGCAGTACCAGAAGGAGCTGAATAAGTATTCTACGCACCTGCATCTAGCA  
 GATGATGTATGAAGCACTTCAAGGGCTCGGTGGAGAAGCTGTGTAGTGTGGAGCAGGACCTGGCCATGG  
 GCTCCGACGAGAGGGGAGAAGATCAAGGACTCCATGAAGCTGATCGTCCGGTCTGCTGGACGCGGC  
 GGTGCCCGCTACGACAAGATCCGGTCTGCTCTACATCCCTTCGGAATGGTGTGAGTGAGGAG  
 AACCTGGCCAAGCTGATCCAGCATGCCAATGTACAGGCGCACAGCAGCCTCATCCGTAACCTGGAGCAGC  
 TGGGAGGCACTGTACCAACCCGGGGCTCGGGACCTCCAGCCGGCTGGAGCCGAGAGAACGCATGGA  
 GCCACCTATCAGCTGTCCCGTGGACCCCGTCAAGGATGTAATGGAGGACGCCGTGGAGGACCCGG  
 CTGGACAGGAACCTGTGGCCCTCGTATCCGACCCGCCCCACGGCCAGCTCCAGGCCGCTGTCACTG  
 CCCGCTTCGGTCACTGGCACAAGAACAAGGCTGGCATAGAAGCCGGCGGGCCCCGGCTCATCGTGTA  
 TGTCATGGGCGGTGTGGCCATGTCAGAGATGAGGGCCGCTACGAGGTGACCAGGGCCACCGAGGGCAAG  
 TGGGAGGTGCTCATTGGCTCCTCACACATCCTCACCCGACCCGCTTCTGGATGACCTGAAGGCACTGG  
 ACAAGAAGCTGGAGGACATTGCCCTGCC

**ACGCGT**ACGCGGCCGCTCGAG - GFP Tag - GTTTAA

**Protein Sequence:**

>RG218531 representing NM\_006949  
 Red=Cloning site Green=Tags(s)

MAPSGLKAVVGEKILSGVIRSVKKGGEWKVLMIDHPSMRILSSCKMSDILAEGITIVEDINKRREPIPS  
 LEAIYLLSPTEKSVQALIKDFQGTPTFTYKAAHIFFTDTCPEPLFSELGRSRLAKVVKTLEIHLAFLPY  
 EAQVFLSDAPHSTYNLYCPFRAEERTRQLEVLAAQIATLCATLQEYPAIRYRKGPEDTAQLAHAVLAKLN  
 AFKADTPSLGEGPEKTRSQLLIMDRAADPVSPLLHELTFQAMAYDLLDIEQDTRYETTGLSEAREKAVL  
 LDEDDDLWVELRHMHIADVSKKVTPELLRTFCESKRLTTDKANIKDLSQILKKMPQYQKELNKYSTHLHLA  
 DDCMKHFKGSVEKLCVSEQDLAMGSDAEGEKIKDSMKLIVPVLLDAAVPAYDKIRVLLLYILLRNGVSEE  
 NLAKLIQHNVQAHSSLIRNLEQLGGTVTNPGSGTSSRLEPRERMEPTYQLSRWTPVIKDVMEVAVEDR  
 LDRNLWPFVSDPAPTASSQAAVSARFGHWHKKNKAGIEARAGPRLIVYVMGGVAMSEMRAAYEVTRATEGK  
 WEVLIGSSHILTPTRFLDDLKALDKKLEDIALP

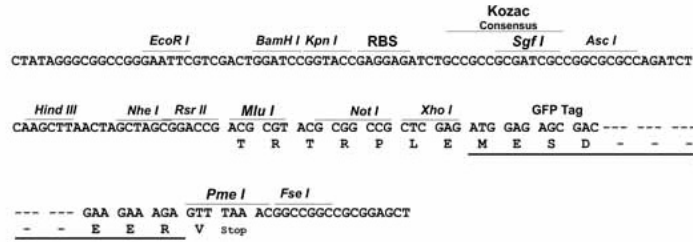
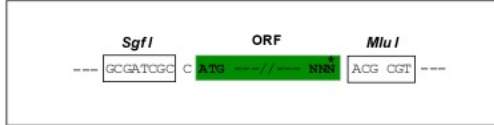
**TRTRPLE** - GFP Tag - V

**Restriction Sites:**

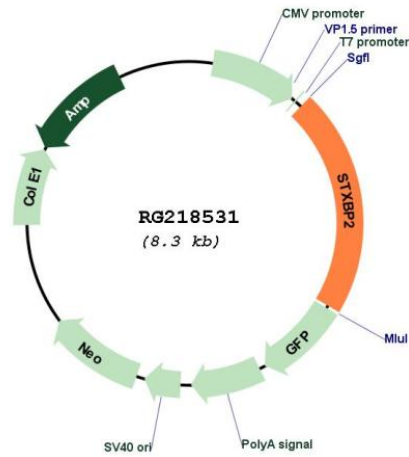
Sgfl-MluI

Cloning Scheme:

Cloning sites used for ORF Shutting:



Plasmid Map:



ACCN: NM\_006949

ORF Size: 1905 bp

<b>OTI Disclaimer:</b>	The molecular sequence of this clone aligns with the gene accession number as a point of reference only. However, individual transcript sequences of the same gene can differ through naturally occurring variations (e.g. polymorphisms), each with its own valid existence. This clone is substantially in agreement with the reference, but a complete review of all prevailing variants is recommended prior to use. <a href="#">More info</a>
<b>OTI Annotation:</b>	This clone was engineered to express the complete ORF with an expression tag. Expression varies depending on the nature of the gene.
<b>Components:</b>	The ORF clone is ion-exchange column purified and shipped in a 2D barcoded Matrix tube containing 10ug of transfection-ready, dried plasmid DNA (reconstitute with 100 ul of water).
<b>Reconstitution Method:</b>	<ol style="list-style-type: none"><li>1. Centrifuge at 5,000xg for 5min.</li><li>2. Carefully open the tube and add 100ul of sterile water to dissolve the DNA.</li><li>3. Close the tube and incubate for 10 minutes at room temperature.</li><li>4. Briefly vortex the tube and then do a quick spin (less than 5000xg) to concentrate the liquid at the bottom.</li><li>5. Store the suspended plasmid at -20°C. The DNA is stable for at least one year from date of shipping when stored at -20°C.</li></ol>
<b>RefSeq:</b>	<a href="#">NM_006949.4</a>
<b>RefSeq Size:</b>	1910 bp
<b>RefSeq ORF:</b>	1782 bp
<b>Locus ID:</b>	6813
<b>UniProt ID:</b>	<a href="#">Q15833</a>
<b>Cytogenetics:</b>	19p13.2
<b>Domains:</b>	Sec1
<b>Protein Families:</b>	Stem cell - Pluripotency
<b>Gene Summary:</b>	This gene encodes a member of the STXBP/unc-18/SEC1 family. The encoded protein is involved in intracellular trafficking, control of SNARE (soluble NSF attachment protein receptor) complex assembly, and the release of cytotoxic granules by natural killer cells. Mutations in this gene are associated with familial hemophagocytic lymphohistiocytosis. Alternatively spliced transcript variants encoding different isoforms have been noted for this gene. [provided by RefSeq, Jan 2013]