

## Product datasheet for **RG218518**

### IL1RA (IL1RN) (NM\_173842) Human Tagged ORF Clone

#### Product data:

**Product Type:** Expression Plasmids  
**Product Name:** IL1RA (IL1RN) (NM\_173842) Human Tagged ORF Clone  
**Tag:** TurboGFP  
**Symbol:** IL1RA  
**Synonyms:** DIRA; ICIL-1RA; IL-1ra; IL-1ra3; IL-1RN; IL1F3; IL1RA; IRAP; MVCD4  
**Mammalian Cell Selection:** Neomycin  
**Vector:** pCMV6-AC-GFP (PS100010)  
**E. coli Selection:** Ampicillin (100 ug/mL)  
**ORF Nucleotide Sequence:** >RG218518 representing NM\_173842  
 Red=Cloning site Blue=ORF Green=Tags(s)

TTTTGTAATACGACTCACTATAGGGCGGCCGGAATTCGTCGACTGGATCCGGTACCGAGGAGATCTGCC  
 GCC**CGATCGCC**

ATGGAAATCTGCAGAGGCCTCCGCAGTCACCTAATCACTCTCCTCCTCTTCTGTTCCATTCAGAGACGA  
 TCTGCCGACCCTCTGGGAGAAAAATCCAGCAAGATGCAAGCCTTCAGAATCTGGGATGTTAACAGAAAG  
 CTTCTATCTGAGGAACAACCACTAGTTGCCGGATACTTGCAAGGACCAATGTCAATTTAGAAGAAAAG  
 ATAGATGTGGTACCCATTGAGCCTCATGCTCTGTTCTTGGGAATCCATGGAGGGAAGATGTGCCTGTCT  
 GTGTCAAGTCTGGTGTGATGAGACCAGACTCCAGCTGGAGGCAGTTAACATCACTGACCTGAGCGAGAACAG  
 AAAGCAGGACAAGCGCTTCGCCTTCATCCGCTCAGACAGTGGCCCCACCACCAGTTTGTAGTCTGCCGCC  
 TGCCCCGGTTGGTTCTCTGCACAGCGATGGAAGCTGACCAGCCCGTCAGCCTCACCAATATGCCTGACG  
 AAGGCGTCATGGTCACCAAAATTCTACTTCCAGGAGGACGAG

**ACGCGT**ACGCGGCCGCTCGAG - GFP Tag - GTTTAA

**Protein Sequence:** >RG218518 representing NM\_173842  
 Red=Cloning site Green=Tags(s)

MEICRGLRSHLITLLLFLFHSETICRPSGRKSSKMQAFRIWDVNQKTFYLRNNQLVAGYLQGPVNVLEEK  
 IDVVPIEPHALFLGIHGGKMCSCVKSGDETRLQLEAVNITDLSENKQDKRFAFIRSDSGPTTSFESAA  
 CPGWFLCTAMEADQPVSLTNMPDEGVMVTKFYFQEDE

**TRTRPLE** - GFP Tag - V

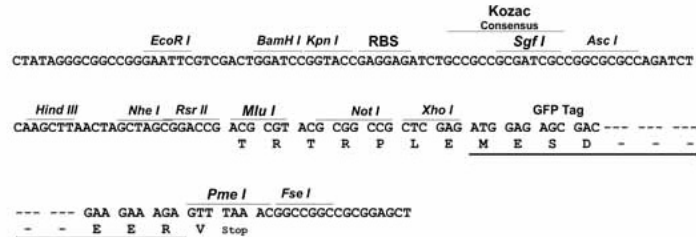
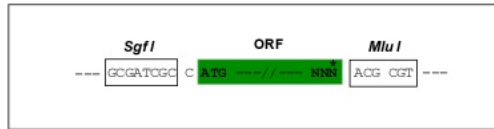
**Restriction Sites:** Sgfl-MluI



[View online >](#)

**Cloning Scheme:**

Cloning sites used for ORF Shutting:



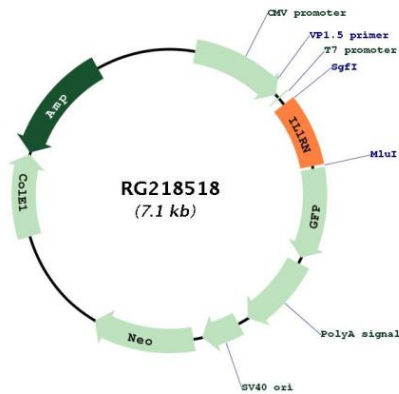
<b>ACCN:</b>	NM_173842
<b>ORF Size:</b>	531 bp
<b>OTI Disclaimer:</b>	The molecular sequence of this clone aligns with the gene accession number as a point of reference only. However, individual transcript sequences of the same gene can differ through naturally occurring variations (e.g. polymorphisms), each with its own valid existence. This clone is substantially in agreement with the reference, but a complete review of all prevailing variants is recommended prior to use. <a href="#">More info</a>
<b>OTI Annotation:</b>	This clone was engineered to express the complete ORF with an expression tag. Expression varies depending on the nature of the gene.
<b>Components:</b>	The ORF clone is ion-exchange column purified and shipped in a 2D barcoded Matrix tube containing 10ug of transfection-ready, dried plasmid DNA (reconstitute with 100 ul of water).
<b>Reconstitution Method:</b>	<ol style="list-style-type: none"> <li>1. Centrifuge at 5,000xg for 5min.</li> <li>2. Carefully open the tube and add 100ul of sterile water to dissolve the DNA.</li> <li>3. Close the tube and incubate for 10 minutes at room temperature.</li> <li>4. Briefly vortex the tube and then do a quick spin (less than 5000xg) to concentrate the liquid at the bottom.</li> <li>5. Store the suspended plasmid at -20°C. The DNA is stable for at least one year from date of shipping when stored at -20°C.</li> </ol>
<b>RefSeq:</b>	<a href="#">NM_173842.1</a> , <a href="#">NP_776214.1</a>
<b>RefSeq Size:</b>	1760 bp
<b>RefSeq ORF:</b>	534 bp
<b>Locus ID:</b>	3557
<b>UniProt ID:</b>	<a href="#">P18510</a>

**Cytogenetics:** 2q14.1

**Protein Families:** Druggable Genome, Secreted Protein

**Gene Summary:** The protein encoded by this gene is a member of the interleukin 1 cytokine family. This protein inhibits the activities of interleukin 1, alpha (IL1A) and interleukin 1, beta (IL1B), and modulates a variety of interleukin 1 related immune and inflammatory responses, particularly in the acute phase of infection and inflammation. This gene and five other closely related cytokine genes form a gene cluster spanning approximately 400 kb on chromosome 2. A polymorphism of this gene is reported to be associated with increased risk of osteoporotic fractures and gastric cancer. Several alternatively spliced transcript variants encoding distinct isoforms have been reported. [provided by RefSeq, Aug 2020]

**Product images:**



Circular map for RG218518