

Product datasheet for **RG218515**

YIF1B (NM_001039672) Human Tagged ORF Clone

Product data:

Product Type: Expression Plasmids
Product Name: YIF1B (NM_001039672) Human Tagged ORF Clone
Tag: TurboGFP
Symbol: YIF1B
Synonyms: FinGER8
Mammalian Cell Selection: Neomycin
Vector: pCMV6-AC-GFP (PS100010)
E. coli Selection: Ampicillin (100 ug/mL)
ORF Nucleotide Sequence: >RG218515 representing NM_001039672
 Red=Cloning site Blue=ORF Green=Tags(s)

TTTTGTAATACGACTCACTATAGGGCGGCCGGAATTCGTCGACTGGATCCGGTACCGAGGAGATCTGCC
 GCC**CGGATCGCC**

ATGACCCCGCAGGCTTGGCGGCGGGCTGCGGGGACGCCCCGGCTGCGTAAGTGGCCCTCGAAGCGGA
 GGATCCCTGTGTCCAGCCGGGCATGGCCGACCCACCAGCTTTTCGATGACACAAGTTCAGCCCAGAG
 CCGGGGCTATGGGGCCAGCGGGCACCTGGTGGCCTGAGTTATCCTGCAGCCTCTCCACGCCCCATGCA
 GCCTTCCTGGCTGACCCGGTGTCCAACATGGCCATGGCCTATGGGAGCAGCCTGGCCGCGCAGGGCAAGG
 AGCTGGTGGATAAGAACATCGACCGCTTACCCCATCACCAAGCTCAAGTATTACTTTGCTGTGGACAC
 CATGTATGTGGGCAGAAAGCTGGCCTGCTGTTCTTCCCCTACCTACACCAGGACTGGGAAGTGCAGTAC
 CAACAGGACACCCCGGTGGCCCCCGCTTTGACGTCAATGCCCGGACCTCTACATTCCAGCAATGGCTT
 TCATCACCTACGTTTTGGTGGCTGGTCTTGGCCTGGGGACCCAGGATAGGTTCTCCCAGACCTCTGGG
 GCTGCAAGCGAGCTCAGCCCTGGCCTGGCTGACCCTGGAGGTGCTGGCCATCCTGCTCAGCCTCTATCTG
 GTCACGTCAACACCGACCTCACCACATCGACCTGGTGGCCTTCTTGGGCTACAAATATGTCGGGATGA
 TTGGCGGGTCTCATGGCCTGCTCTTCGGGAAGATTGGCTACTACCTGGTGTGGGCTGGTGTGCGT
 AGCCATCTTTGTGTTTCATGATCCGGACGCTGCGGCTGAAGATCTTGGCAGACGCAGCAGCTGAGGGGTC
 CCGGTGCGTGGGGCCGGAACAGCTGCGCATGTACCTGACCATGGCGGTGGCGGCGCGCAGCCTATGC
 TCATGTAAGTGGCTCACCTTCCACCTGGTGGC

ACGCGTACGCGGCCGCTCGAG - GFP Tag - GTTTAA



[View online »](#)

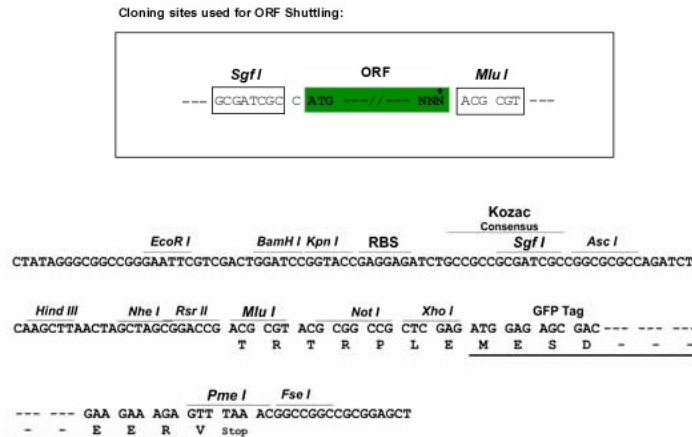
Protein Sequence: >RG218515 representing NM_001039672
 Red=Cloning site Green=Tags(s)

MHPAGLAAAAAGTPRLRKWPSKRRIPVVSQPGMADPHQLFDDTSSAQSRYGAQRAPGGLSYPAASPTPHA
 AFLADPVSNMAMAYGSSLAAQKELVDKNIDRFIPITKLKYFFAVDTMYVGRKLGLLFFPYLHQDWEVQY
 QQDTPVAPRFVDVNAPDLIIPAMAFITYVLVAGLALGTQDRFSPDLLGLQASSALAWLTLEVLAILLSLYL
 VTYNTDLTTIDLVAFLGYKYVGMIGGVLMLLFGKIGYYLVLGWCCVAIFVFMIRTLRLKILADAAAEGV
 PVRGARNQLRMYLTMVAAAQPLMYWLTFFHLVR

TRTRPLE - GFP Tag - V

Restriction Sites: SgfI-MluI

Cloning Scheme:



ACCN: NM_001039672

ORF Size: 942 bp

OTI Disclaimer: The molecular sequence of this clone aligns with the gene accession number as a point of reference only. However, individual transcript sequences of the same gene can differ through naturally occurring variations (e.g. polymorphisms), each with its own valid existence. This clone is substantially in agreement with the reference, but a complete review of all prevailing variants is recommended prior to use. [More info](#)

OTI Annotation: This clone was engineered to express the complete ORF with an expression tag. Expression varies depending on the nature of the gene.

Components: The ORF clone is ion-exchange column purified and shipped in a 2D barcoded Matrix tube containing 10ug of transfection-ready, dried plasmid DNA (reconstitute with 100 ul of water).

Reconstitution Method:

1. Centrifuge at 5,000xg for 5min.
2. Carefully open the tube and add 100ul of sterile water to dissolve the DNA.
3. Close the tube and incubate for 10 minutes at room temperature.
4. Briefly vortex the tube and then do a quick spin (less than 5000xg) to concentrate the liquid at the bottom.
5. Store the suspended plasmid at -20°C. The DNA is stable for at least one year from date of shipping when stored at -20°C.

RefSeq: [NM_001039672.3](#)

RefSeq Size: 1242 bp

RefSeq ORF: 945 bp

Locus ID: 90522

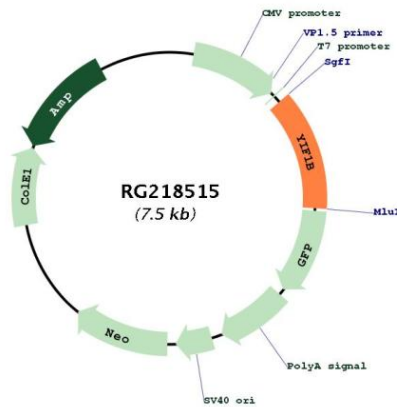
UniProt ID: [Q5BJH7](#)

Cytogenetics: 19q13.2

Protein Families: Transmembrane

Gene Summary: Involved in the anterograde traffic pathway from the endoplasmic reticulum to the plasma membrane and the organization of the Golgi architecture (By similarity). Plays a key role in targeting to neuronal dendrites receptors such as HTR1A (By similarity).[UniProtKB/Swiss-Prot Function]

Product images:



Circular map for RG218515