

## Product datasheet for **RG218478**

### LTK (NM\_206961) Human Tagged ORF Clone

#### Product data:

Product Type:	Expression Plasmids
Product Name:	LTK (NM_206961) Human Tagged ORF Clone
Tag:	TurboGFP
Symbol:	LTK
Synonyms:	TYK1
Mammalian Cell Selection:	Neomycin
Vector:	pCMV6-AC-GFP (PS100010)
E. coli Selection:	Ampicillin (100 ug/mL)



[View online »](#)

**ORF Nucleotide  
Sequence:**

>RG218478 representing NM\_206961  
 Red=Cloning site Blue=ORF Green=Tags(s)

TTTTGTAATACGACTCACTATAGGGCGGCCGGGAATTCGTCGACTGGATCCGGTACCGAGGAGATCTGCC  
 GCC**CGATCGCC**

ATGGGCTGCTGGGACAGCTGCTGGTGTGGTTCGGAGCCGCGGGCGCCATTCTCTGCTCTAGCCCGGGT  
 CCCAGGAGACTTTTCTGCGGTCCCTCGCCCTGCCGCTGGCAAGTCCCAGCCCCGGGACCGGAAAGTCAG  
 CGCCCCGCTAGTATCTTGGAGCCAGCCTCCCCGCTGAATTCTCCGGGCACCGAGGGTCTTGGCTGTTT  
 TCTACCTGCGGGGCCAGCGCCGGCATGGGCCACACAGACACAATGTGACGGGGCGTACGCGGGACCA  
 GCGTGGTGGTGACCGTGGGGGCCCGGGCAGCTGAGAGCGTGCAGCTGTGGCGCTGCCGGGCCCTGG  
 CCAGTATCTGATCTCAGCCTACGAGCCGCGGGCGGCAAGGCGCAAGAACCACCTGTCGCGGGCGCAT  
 GCGCTCTCGTCTCAGCAATCTTCTCCCTCGTCTCGGGAGTCGCTGTACATCTGGTGGGCGAGCAGG  
 GAGAGGACGCTGTCCCGGAGGTAGCCCGGAGAGCCAGCTCGTCTGCCTCGGGAGTCTCGAGCCGTTGA  
 AGAGCACGCGGCGATGGATGGGAGCGAAGGGTCCCGGGTTCGCGCGCTGGGCGGAGGTGGCGGGGT  
 GCGGGGGCGCCACCTACGTTTTCCGGGTGCGCGCTGGCGAGCTGGAACCGTTGCTGGTGGCGGCCGGAG  
 GCGGCGGTGCGGCCTACCTGAGGCCGCGGGACCGAGGCCGACTCAGGCCTCCCCGAGAACTGGAGAA  
 CCGCTCGGAGGCGCCCGGAGCGCGGGAGAGCGGGGCGGAGGGGGCGACGCTTCAGAGACTGACAA  
 CTCTGGGTGATGGGGAAGATGGAGTATCCTTCATACACCCAGCAGCGAGCTCTTCTGCAGCCTCTGG  
 CAGTCAACGAGAACACGGAGAGGTAGAGATCCGAAGGCACCTCAACTGCAGTACTGCCCTTGAGAGA  
 CTGCCAATGGCAGGACAGCTCCAGCTGGCTGAATGCCTGTGCCAGAAGGCATGGAGCTAGCTGTGGAT  
 AACGTACCTGCATGGACCTGCACAAGCCCCAGGCCCTCTGGTCTGATGGTGGCTGTGGTGGCAACCT  
 CAACACTGAGCCTCCTTATGGTGTGTGGGTCTGATTCTGGTGAAGCAGAAGAAGTGGCAGGGCCTGCA  
 GGAGATGAGGCTGCCGAGCCCTGAGCTTGAGCTGAGCAAGCTTCGAACCTCTGCCATCAGGACAGCCCC  
 AATCCCTATTATTGCCAGGTGGGCTTGCCCCGCGCCAGTCTGGCCTCTGCCACCAGGTGTACCGAGG  
 TTTCCCGAGCAATGTTACTCTGCTCAGAGCCCTGGGCCATGGTGCCTTTGGGGAGGTGTATGAGGACT  
 GGTAATTGGCCTTCTGGGACTCCAGTCCCCTGCAGGTAGCTATCAAGACCCTGCCAGAACTCTGCTCG  
 CCTCAGGATGAGCTGGATTTCTCATGGAGGCCCTCATCATCAGCAAGTTTCGCCATCAGAACATTGTGC  
 GGTGTGTGGGCTCAGCCTCAGGGCCACCCCTCGCCTATTCTGCTGGAAGTGTGTCTGGAGGGGACAT  
 GAAGAGTTTCTGAGGCACAGTCGGCCACACCTGGGCCAGCCATCACCTCTGGTCATGCGGGACCTGCTG  
 CAACTGGCCCAGGACATAGCCCAGGGCTGCCACTACCTGGAGGAAATCACTTCATCCACAGGGATATTG  
 CCGCCCGAACTGCCTGCTGAGCTGCGCTGGACCCAGCCGAGTGGCCAAGATTGGGGACTTTGGGATGGC  
 ACGAGATATCTACCGGGCCAGTTATTACCGCAGGGGGGACCGGGCCTTGCTCCCAGTCAAGTGGATGCC  
 CCAGAGGCCCTTCTGGAGGGCATCTTCACATCCAAGACAGATTCTGGTCTTTGGGGTGTCTCTGGG  
 AGATCTTCTCACTGGGTACATGCCCTATCTGGGCGCACCAACCAGGAGGTGCTGGACTTCGTCGTTGG  
 AGGAGGCCGATGGACCTCCTAGGGGCTGCCAGGGCCTGTGTACCGCATCATGACCCAGTGTTGGCAG  
 CACGAGCCTGAGCTCCGCCCTAGCTTTGCCAGCATCTTGGAGCGTCTGCAGTACTGCACTCAGGACCCGG  
 ATGTGCTGAATCACTCCTGCCAATGGAGCTGGGGCCACCCAGAGGAGGAAGGACTTCTGGGCTGGG  
 GAACAGATCTTTGGAGTGCCTAAGACCCCCACAGCCCCAGGAAGTCCAGAGAAGTTGAAAAGCTGG  
 GGAGGTAGCCCTTTGGCCCTGGCTGTCTTGGCCTCAAGCCCTCAAATCCAGGGGCTCCAACCTC  
 AGAACCTTTGGAATCCCACTTATCGCTCC

**ACGCGT**ACGCGGCGGCTCGAG – GFP Tag – GTTTAA

**Protein Sequence:** >RG218478 representing NM\_206961  
 Red=Cloning site Green=Tags(s)

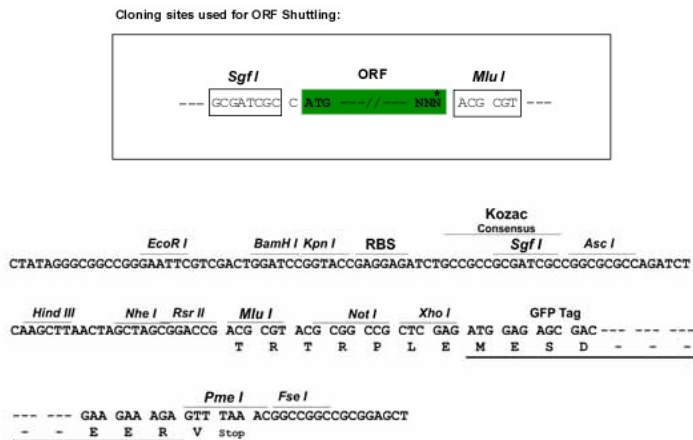
MGCWGQLLVWFGAAGAILCSPGSGQETFLRSSPLPLASPSRDPKVSAPPSILEPASPLNSPGTEGSWLF  
 STCGASGRHGPTQTQCDGAYAGTSVVVTVGAAGQLRGVQLWRVPGPGQYLISAYGAAGGKGAKNHLSRAH  
 GVFSIAIFSLGLGESLYILVGQGEDACPGGSPESQLVCLGESRAVEEHAAMDGSEGVPGSRRWAGGGGG  
 GGGATYVFRVRAGELEPLLVAAGGGGRAYLRPRDRGRTQASPEKLENRSEAPGSGGRGGAAGGDASETDN  
 LWADGEDGVSF IHPSSSELFLQPLAVTENHGEVEIRRHLCNSHCPLRDCQWQAEQLAECLCEGMELAVD  
 NVTCMDLHKPPGPLVLMVAVVATSTLSLLMVCGLILVKQKKWQGLQEMRLPSPELELSKLRTSAIRTAP  
 NPYYCQVGLGPAQSWPLPPGVTEVSPANVTLLRALGHGAFGEVYEGLVIGLPGDSSPLQVAIKTLPELCS  
 PQDELDFLMEAL IISKFRHQNIVRCVGLSLRATPRLILLEMSGGDMKSFLRHSRPHLGQPSPLVMRDLL  
 QLAQDIAQGCHYLEENHFIHRDIAARNCLLSCAGPSRVAKIGDFGMARDIYRASYRRGDRALLPVKWMP  
 PEAFLGIFTSKTDSWSFGVLLWEIFSLGYMPYPGRTNQEVLDFFVGGGRMDPPRGCPGPVYRIMTQCWQ  
 HEPRLRPSFASILERLQYCTQDPDVLNSLLPMELGPTPEEEGTSGLGNRSLECLRPPQPQELSPEKLKSW  
 GGSPLGPWLSSGLKPLKSRGLQPQNLWNPTYRS

TRTRPLE – GFP Tag – V

**Chromatograms:** [https://cdn.origene.com/chromatograms/ja3357\\_a01.zip](https://cdn.origene.com/chromatograms/ja3357_a01.zip)

**Restriction Sites:** SgfI-MluI

Cloning Scheme:



**ACCN:** NM\_206961

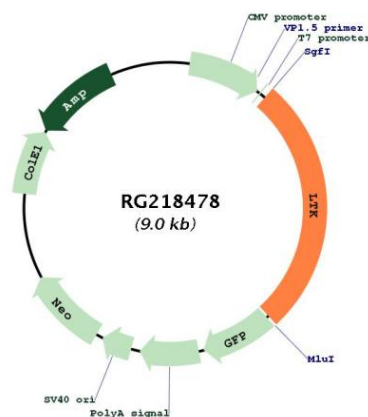
**ORF Size:** 2409 bp

**OTI Disclaimer:** Due to the inherent nature of this plasmid, standard methods to replicate additional amounts of DNA in E. coli are highly likely to result in mutations and/or rearrangements. Therefore, OriGene does not guarantee the capability to replicate this plasmid DNA. Additional amounts of DNA can be purchased from OriGene with batch-specific, full-sequence verification at a reduced cost. Please contact our customer care team at [custsupport@origene.com](mailto:custsupport@origene.com) or by calling 301.340.3188 option 3 for pricing and delivery.

The molecular sequence of this clone aligns with the gene accession number as a point of reference only. However, individual transcript sequences of the same gene can differ through naturally occurring variations (e.g. polymorphisms), each with its own valid existence. This clone is substantially in agreement with the reference, but a complete review of all prevailing variants is recommended prior to use. [More info](#)

<b>OTI Annotation:</b>	This clone was engineered to express the complete ORF with an expression tag. Expression varies depending on the nature of the gene.
<b>Components:</b>	The ORF clone is ion-exchange column purified and shipped in a 2D barcoded Matrix tube containing 10ug of transfection-ready, dried plasmid DNA (reconstitute with 100 ul of water).
<b>Reconstitution Method:</b>	<ol style="list-style-type: none"> <li>1. Centrifuge at 5,000xg for 5min.</li> <li>2. Carefully open the tube and add 100ul of sterile water to dissolve the DNA.</li> <li>3. Close the tube and incubate for 10 minutes at room temperature.</li> <li>4. Briefly vortex the tube and then do a quick spin (less than 5000xg) to concentrate the liquid at the bottom.</li> <li>5. Store the suspended plasmid at -20°C. The DNA is stable for at least one year from date of shipping when stored at -20°C.</li> </ol>
<b>RefSeq:</b>	<u><a href="#">NM_206961.4</a></u>
<b>RefSeq Size:</b>	2960 bp
<b>RefSeq ORF:</b>	2412 bp
<b>Locus ID:</b>	4058
<b>UniProt ID:</b>	<u><a href="#">P29376</a></u>
<b>Cytogenetics:</b>	15q15.1
<b>Protein Families:</b>	Druggable Genome, Protein Kinase, Transmembrane
<b>Gene Summary:</b>	The protein encoded by this gene is a member of the ros/insulin receptor family of tyrosine kinases. Tyrosine-specific phosphorylation of proteins is a key to the control of diverse pathways leading to cell growth and differentiation. Multiple transcript variants encoding different isoforms have been found for this gene. [provided by RefSeq, Oct 2008]

## Product images:



Circular map for RG218478