

Product datasheet for **RG218466**

CCDC108 (CFAP65) (NM_194302) Human Tagged ORF Clone

Product data:

Product Type:	Expression Plasmids
Product Name:	CCDC108 (CFAP65) (NM_194302) Human Tagged ORF Clone
Tag:	TurboGFP
Symbol:	CFAP65
Synonyms:	CCDC108; SPGF40
Mammalian Cell Selection:	Neomycin
Vector:	pCMV6-AC-GFP (PS100010)
E. coli Selection:	Ampicillin (100 ug/mL)
ORF Nucleotide Sequence:	>RG218466 representing NM_194302 Red=Cloning site Blue=ORF Green=Tags(s)

TTTTGTAATACGACTCACTATAGGGCGGCCGGAATTCGTCGACTGGATCCGGTACCGAGGAGATCTGCC
GCC**CGATCGCC**

ATGTTTACCTTAACCGTTGTAGACTGGTGGAGAAAACCCAGAAGGTAGAGAATCCATCAGTCTCATTTG
CCTCTTCTTTCCCTTATTCTCTTCTCCTAAGAGGCAAGAGTGTTCAGAAGAAACAAGCAGAGAGTAA
AAGCCAGATAAAGCTCCATACTCAGAGTCTCCCTTTGGACTGTGTCCCAAGGACATGATGCTCACCCAG
GCTCCAAGCTCCGTCGTGAGGTCCAGGAACAGCAGGAACACACCGTGAAGTCTGGTGGATCCTGCCTGA
GTGCCAGCACAGTGGCCATCCCTGCCATCAACGACAGCAGTGCAGCCATGAGTGCCTGCAGCACCATCAG
CGCCAGCCCGCAAGCTCCATGGACACTCAGATGCACTCCCAAAGAAGCAGGAGAGAGTGAACAAGAGG
GTCATCTGGGGCATTGAGGTGGCTGAGGAGCTGCATTGAAAGGCTGGGAGCTAGGAAAGGAGACCACAA
GGAATCTGGTTCTGAAAAATCGATCCTTGAAACTCCAGAAGATGAAGTACAGGCCCCCAAGACCAAGTT
CTTCTTACGGTCATCCCTCAGCCCATCTTCTGAGCCAGGCATAACCCCTCACGCTCCCATCGTCTTC
CGGCTCTGGAGGCGAAGGAGTACATGGACCAGCTGTGGTTTGAGAAAGCGGAGGGGATGTTCTGTGTCG
GCCTACGGGCCACCCTGCCCTGCCACAGGCTGATCTGCCGCCACCATCCCTGCAGCTGCCATGTGTGC
TGTGGGAGATACGACTGAGGCCTTTTCTGCCTGGATAATGTGGGGACCTGCCACCTTCTTACCTGG
GAGTTCTCCAGCCATTCCAGATGCTGCCGCCACGGGGCTCTGGAGCCAGGCCAGGCCCTCAGATCA
AGGTGACCTTTCAGCCCTTACAGCCGTATCTACGAGGTGCAGGCCACGTGCTGGTACGGGCGGGCAG
CCGGCAGAGGAGCAGCATCCAGCTGCAGGCTGTGGCCAAGTGCGCCAGCTGCTGGTGGAGCATAAAGCAC
AAGTGCCCGGAGGACCAGGATGCCGAGGGCTTCCAGAAGCTGTTGTAAGTGGCTCTGTTGCTGTGGCT
GCACCTCGGAGAGGCAGATCAGGCTACACAACCCGTCGGCGGTAATGCCCCCTCAGGATTGAAATTTT
CCCGGATGAAGTGGCCGAAGACCAGGCCCTTCTCATGCCCCACGGCCCATGGCATCGTCTCCGGGAGAG
AAGAAATGTGTGTCGGTGTCTTCCACCCCAAGACTCTGGACACCAGAAGTGGACTACTGCTCCATCA
TGCTTCTGGCTGTGCCTCAAGACCCTGCTTAAAGTCGTTGGTTTCTGTAGAGGCCCTGCTGTGTCCT
GCAGCACTACTGTCAACTTCAGCTGGGTCAACCTTGGGGAGCGCTCCGAGCAGCCCTGTGGATTGAG



[View online »](#)

AACCAATCGGACTGCACGGCCCACTTCCAGTTGCCATCGACTGCTTGGAGAGTGTCTTTACCATCAGGC
 CTGCCTTTGGGACGCTGGTGGGCAAGGCCCGTATGACCCTGCACTGTGCCTTCCAGCCCACTCACCCCAT
 CATCTGCTTTGGCGTGTGGCCTGTCTCATCCACCACCAGGACCCACTGTTCTGGACCTGATGGGGACC
 TGCCACTCGGACAGCACCAAGCCAGCCATCCTGAAGCCTCAGCACCTCACCTGGTACCGCACACCTGG
 CCCGGGCTGACGCTCTACCCCTGACATCCTGGATGCCATGCTGAAGGAGAAGAAGTGGCACAGGA
 CCAGAACGGGGCTCTCATGATTTCCATCCAGGATCTGGAGGACATGCCGGCCCGCAGTACCCTTATATC
 CCCCCATGACCGAGTTCTTCTTCGACGGCACCAGCGACATAACCATCTTCCCCCGCCATCAGTGTAG
 AGCCTGTCGAGGTAGACTTCGGTGCCTGCCAGGGCCTGAGGCCCAACCCTGTACCCCTGTGCCTGAT
 GAACCACACCAAGGGCAAGATCATGGTGGTCTGGACGCGAAGGTCTGACTGCCCTTCTGGGTGACTCCA
 GAGAGCTGCGACGTGCCCACTCAAGTCCATGGCCATGCGCCTGCACTTCCAGCCGCTCACCCCAACT
 GCCTTTACACGGTGGAGCTCGAAGCCTTCGCCATCTATAAGTCTGCAGAGCTACAGTAATATTGAGGA
 GGACTGCACCATGTGCCATCCTGGTGCCTGACGGTGGGGCAGGAGCCACAGCTATTTGCTGGCTTT
 GAGCACCATCCCCAGTATCCCTAGATGTCCCAAGCTATTTCCAGCAGTGCCTCCGGTGGCCCA
 CCTACCGCAGCCTGCTCCTGGTCAACAAGACTGCAAGCTGCTGACCTTCAGCCTGGCCCCCAGAGAGG
 CTCAGACGTCATCTTCGGCCCACTTCGGGCTTGTGGCACCCGGGGCCACCAGATCATCTCATCTGC
 ACCTACCTGAGGGCAGCTCCTGGAAGCAGCACACTTTCTATCTGCAAGTGAATGCTTCCCCCAGTATC
 TAAGGAGGTGAGCATGTACAGCCGGGAGGAGCCACTGCAGCTGAAGCTGGACACCCACAAAAGCCTCTA
 CTTCAAGCCACCTGGGTGGGCTGCTCCTCCACCAGCCCTTACCTTCCGCAACCCCTCGGTCTGCC
 CTGCAGTTCGAGTGGAGGGTCTCTGAGCAGCATCGAAAGTGTGGTGTCCAGCCCTCCAGGGGCTAA
 TCCAGCCCAACGAGAGACTTACGCTGACGTGGACTTCAGCCCTTTGGAGGAGACCAAGTACCTGTTCCA
 AGTGGGGATGTGGGTCTGGGAAGCCGGCCTGTCCCAATGCCAACCCGCTGCCACCACCACTACATG
 CTCGGCTGGTGGGCTTGGGCTCACCAGCAGCCTCTCTGCAAAGGAAAAGGAGCTGGCCCTTTGGGAATG
 TGCTGGTGAACAGCAAGCAGTCCAGGTTCTTGTCTCTGAATGACGGCAACTGCACCTCTATTACCG
 CCTCTACCTGGAGCAGGGCAGCCCTGAGGCCGTTGACAACCACCCCTCGCTCTGCAGCTGGACGAACA
 GAGGGGAGCATGCCACCCGGTCCAGGACACCATCTGCCTGACTGCCTGTCCAAGCAGCGGTCCCACT
 ACTCCTGGACCATCACCTACTCTCTCTTTCCACAGAGATAACAAGGCTGGGGAGAAGCAGGAGCTGTG
 CTGCGTCTCCCTGGTGGCCGTGTACCCCTGCTTTCCATCCTGGATGTCAGCTCCATGGGCAGTGTGAG
 GGTATCACCCGGAAGCACCTGTGGCGCCTTCTCTCTGGACTGCTTAAACAGTACTTGGAGCGTGACC
 CCACCCCTGTGAGCTCACCTACAAGGTGCCACCCGGCAGCATGAGCCAGATCCCCCGCTCCTCAC
 CCCTTTAAGGCTTGACTTCAATTTGGGGCCGCACCATTCAAGGCCACCTTCCGTGGTATTCTGGCC
 CTGAAGAACAGCGGAGTGGTGTCCCTGGACTGGGCTTCTCCTTCCAAGTGACCAGCGGATTGACGTGG
 AGCTCTGGGCAGAGCAAGCAGAGTTGAATTCAGTGCAGCTCCACCAGATGCGCGTGCAGGACAATTGCC
 CTTCTCCATCAGCCCAAGGCTGGGAGCCTGAGTCTGGGCAGGAGCAGATGGTGGAGTTAAAATACAGC
 CACCTGTTTCATCGGTACTGATCACCTCCCAGTGTCTTCAAGGTGTCCATGGCCGGGAGATCCTGCTAA
 ATTTATAGGTGTGACAGTGAAGCCGGAGCAGAAGTATGTGCACTTACCTTACTACCCACCAAGTTCAT
 CCCCATTCCCATTGGTGCACGCTACCCCAAGGAGATTTATGAGTGTATAATGGTGGCTCAGTGCC
 GTGACATATGAGGTCCAGACCGATGCTGTGACAGGTTCAAGGAAAAAATTTGATCACCCATCTTT
 GCTGCCTCAACCCAAAGGGGAGATCCAGCCAGGAGCAGTGCCTGGGATGGAAGTCCAGCCATCCACTT
 CAGGGAGTGGGCTACAACCCCATATGATGGGGACACAGCCCAATTCACAACATCTCCTCGTGGGACA
 ACAGTTCCATACTCTAGGCTGGTGGTGCCTGGACAGAATGTCTTCTGTCCCAGTCTCATATTTCCCT
 GGGAAACATACCTGTGCAGAGCAAGTGCAGCCGCTGCTTCTCAACAACATCTCCAAGAACGAGGAA
 ATTGCCTTCTCCTGGCAGCAAGTCTCTAGATTTGGGGAGGTGTCTGTGAGTCCCATGATAGGGGTGG
 TGGCTCCTGAAGAGACGGTCCATTTGTGGTACCTTGGGGCTCTGTGCATGCCAGTCTTACAGTGC
 AGACCTGGTATGCAAGCTGTACTCGCAGCAGCTCATGAGGCAGTATCACAAGGAGCTGCAGGAGTGAAG
 GACGAGAAGGTGCGGCAGGAAGTGGAGTTCACCATCACCGACATGAAAGTGAAGAAGAGAACATGCTGCA
 CAGCCTGTGAACCTGCGAGGAAGTACAAGACACTGCCTCCATCAAGAACCAGCAGTCTGTGAGCCGGCC
 TGCCAGCTGGAAGTGCAGACCCCAAGGAGGAGTGTCTTGGCCCTGCCCCAGCCACCTCGCCAGGC
 ATGCTCTGCCTGGGCTTACTGCCGAGCCATGCCACCGACTACTTTCTGGCTAACTTCTTCTCAGAGT
 TTCCCTGCCACTTTTGCACCGGGAGCTGCCAAAGAGGAAGGCCCCAGGGAAAGAGTGCAGAGACTTCTGA
 GGAAAAATCCCCTAACAAGTGGGGCCCTGTTTCCAAGCAGAAGAAGCAGCTCCTGGTTGACATTCTACC
 ACAATAATCAGGGGCTGCTGGAAGACAAGAATTCCATGAGGCTGTGGACCAAGCCTGGTGGAGCAGG

TGCCGTA CTTCCGCCAATTCTGGAATGAGCAGTCAACTAAGTTCATGGACCAGAAAAACAGCCTGTA CTT
AATGCCAATCCTGCCTGTACCCTCCAGCAGCTGGGAGGATGGGAAGGGCAAGCAGCCGAAGGAAGACAGA
CCAGAGCACTATCCAGGGTTGGGAAAGAAGGAAGAGGGGGAGGAGGAGAAGGGTGAAGAGGAAGAAGAAG
AGTTGGAGGAGGAAGAGGAGGAAGAAGAGGAGACAGAAGAGGAGGAGTTGGGCAAGGAGGAGATAGAGGA
GAAGGAGGAGGAGAGGGATGAGAAGGAAGAAAGTGAAGTGGCGGGCATCGGGCCACACCACAGCCT
GAGTCCCAGGAGTCCATGCAATGGCAGTGGCAACAGCAGCTGAATGTATGGTGAAGGAGGAGCAAGAAC
AGGACGAGAAGGAGGCCATCAGAAGGCTCCCGCCTTCGCCAACCTGCAGGAGGCGCTGCTGGAGAACAT
GATCCAGAACATCCTGGTGGAGGCGAGCCGGGGAGGTGGTACTCACCTCGCGGCCACGCGTCATCGCC
CTGCCCGCTTCTGCGTCCCAGGAGTCTGACCCCGACACGCTGCTGCCGACGACAGCAAGCAGAGGTAC
TCCACCCGGTGGTCCACTTCTACCGACCTTCG

AGCGGACCGACGCGTACGCGGCCGCTCGAG - GFP Tag - GTTTAA

Protein Sequence:

>RG218466 representing NM_194302
Red=Cloning site Green=Tags(s)

MFTLTGCRLEVEKQKVENPSVSFASSFLIPLLLRGSVQKKQAESKSQIKLHTQSAPFGLCPKDMMLTQ
APSSVVRSRNRSRHTVNSGGSLSASTVAIPAINDSSAAMSACSTISAQPASSMDTQMHSPPKQERVNKR
VIWGIEVAEELHWKGWELGKETTRNLVLKNRSLKQKMYRPPKTKFFFTVIPQPIFLSPGITLTLPIVF
RPLEAKEYMDQLWFEKAEGMFCVGLRATLPCHRLICRPPSLQLPMCAVGDTEAFFCLDNVGDLPFTFTW
EFSSPFQMLPATGLLEPGQASQIKVTFQPLTAVIYEVQATCWYGAGSRQRSSIQLAQAVAKCAQLLVSIKH
KCPEDQDAEGFQKLLYFGSVAVGCTSERQIRLHNPASVNAFPRIEISPDELAEDQAFSCPTAHGIVLPGE
KCCVSVFHPKTLDRTRVDYCSIMPSCASKTLLKVVGFCRGPVSLQHYCVNFSWVNLGERSEQLWIE
NQSDCTAHFQFAIDCLESVFTIRPAFGTLV GKARMTLHCAFQPTHPIICFRRVACLIIHQDPLFLDLMGT
CHSDSTKPAILKPOHLTWYRTHLARGLTLYPPDILDAMLKEKLAQDQNGALMIPIQDLEMPAPQYPI
PPMTEFFFDGTSITIFPPPISEVPEVEVDFGACPGPEAPNPVPLCLMNHTKGIKIMVWTRRSDCPFVWTP
ESCDVPLPKSMAMRHLHFQPPHPNCLYTVLEAFIYKVLQYSNIEEDCTMCPSWCLTVRARGHSYFAGF
EHHIPQYSLDVPKLPFAVSSGEPTYRSLLLVNDCKLLTFSLAPQRGSDVILRPTSGLVAPGAHQIILIC
TYPEGSSWKQHTFYLQCNASPYLKEVSMYSREEPLQLKLDTHKSLYFKPTWVGCSSTSPFTFRNPSRLP
LQFEWRVSEQHRKLLAVQPSRGLIQPNERLTWTFSPLEETKYLQVGMWVWEAGLSPNANPAATTHYM
LRLVGVGLTSSLSAKEKELAFGNVLVNSKQSRFLVLLNDGNCTLYYRLYLEQGSPEAVDNHPLALQLDRT
EGSMPPRSQDITICLTACPKQRSQYSWTITYSLLSHRDNKAGEKQELCCVSLVAVYPLL SILDVSSMGSAE
GITRKHLLWRLFSLDLLNSYLERDPTPCELTYKVPTRHMSQIPVLTPLRLDFNFGAAPPKAPPSVVFLA
LKNSGVSLDWFALLPSDQRIDVELWAEQAEINSTEHLQMRVQDNCLFSISPKAGSLSPGQEQMVELKYS
HLFIGTDHLPVLFKVS HGREILLNFIGTVKPEQKYVHFSTTHQFIPPIGDTLPPRQIYELYNGGSVP
VTYEVQTDVLSQVQEKNFDPHFICCLNPKGEIQPGSTARVLWIFSPIEAKTYTVDVPIHILGWNSALIH
QGVGNPHMMGDTAPFHNISSWDNSSIHSRLVVPQGNVFLSQSHISLGNIPVQSKSRLFLNNSKNEE
IAFSWQPSPLDFGEVSVSPMIGVVAPEETVPFVTLRASVHASFYSADLVCKLYSQQLMRQYHKELQEWK
DEKVRQVEFTITDMKVKKRTCCCTACEPARKYKTLPPIKNQSVSRPASWKLQTPKEEVSWPQPSPSPG
MLCLGLTARAHATDYFLANFFSEFPCHFLHRELPKRKAPREESETSEEKSPNKWGPVSKQKQLLVDILT
TIIRGLLEDKNFHEAVDQSLVEQVPYFRQFWNEQSTKFMQKNSLYLMPILPVPSSSWEDGKGKQPKEDR
PEHYPLGKKEEGEEKGE EEE
ESQESMQWQWQQQLNVMVKEEQEQDEKEAIRRLPAFANLQEALLENMIQNILVEASRGEVLT SRPRVIA
LPPFCVPRSLTPDTLLPTQAEVLHPVVPLPTDLP

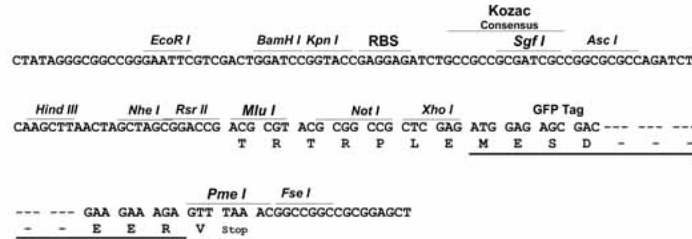
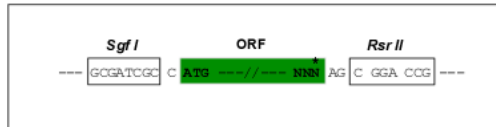
SGPTRRRLE - GFP Tag - V

Restriction Sites:

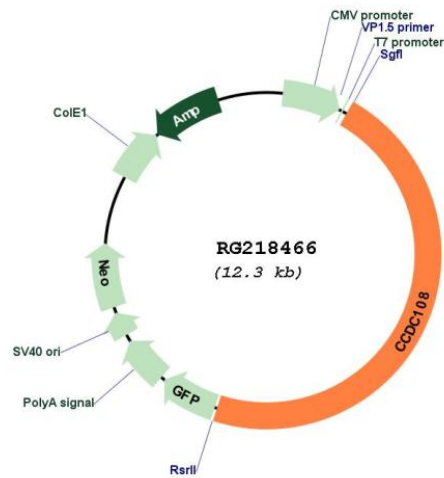
SgfI-RsrII

Cloning Scheme:

Cloning sites used for ORF Shuttling:



Plasmid Map:



ACCN: NM_194302

ORF Size: 5775 bp

OTI Disclaimer:	The molecular sequence of this clone aligns with the gene accession number as a point of reference only. However, individual transcript sequences of the same gene can differ through naturally occurring variations (e.g. polymorphisms), each with its own valid existence. This clone is substantially in agreement with the reference, but a complete review of all prevailing variants is recommended prior to use. More info
OTI Annotation:	This clone was engineered to express the complete ORF with an expression tag. Expression varies depending on the nature of the gene.
Components:	The ORF clone is ion-exchange column purified and shipped in a 2D barcoded Matrix tube containing 10ug of transfection-ready, dried plasmid DNA (reconstitute with 100 ul of water).
Reconstitution Method:	<ol style="list-style-type: none">1. Centrifuge at 5,000xg for 5min.2. Carefully open the tube and add 100ul of sterile water to dissolve the DNA.3. Close the tube and incubate for 10 minutes at room temperature.4. Briefly vortex the tube and then do a quick spin (less than 5000xg) to concentrate the liquid at the bottom.5. Store the suspended plasmid at -20°C. The DNA is stable for at least one year from date of shipping when stored at -20°C.
RefSeq:	NM_194302.2 , NP_919278.2
RefSeq Size:	5975 bp
RefSeq ORF:	5778 bp
Locus ID:	255101
UniProt ID:	Q6ZU64
Cytogenetics:	2q35
Protein Families:	Transmembrane
Gene Summary:	The protein encoded by this gene has putative coiled-coil domains and may be a transmembrane protein. The chicken ortholog of this gene is involved in the Rose-comb mutation, which is a large chromosome inversion, resulting in altered comb morphology and defects in sperm motility. [provided by RefSeq, Aug 2016]