

## Product datasheet for **RG218462**

### NG2 (CSPG4) (NM\_001897) Human Tagged ORF Clone

#### Product data:

Product Type:	Expression Plasmids
Product Name:	NG2 (CSPG4) (NM_001897) Human Tagged ORF Clone
Tag:	TurboGFP
Symbol:	NG2
Synonyms:	CSPG4A; HMW-MAA; MCSP; MCSPG; MEL-CSPG; MSK16; NG2
Mammalian Cell Selection:	Neomycin
Vector:	pCMV6-AC-GFP (PS100010)
E. coli Selection:	Ampicillin (100 ug/mL)
ORF Nucleotide Sequence:	>RG218462 representing NM_001897 Red=Cloning site Blue=ORF Green=Tags(s)

TTTTGTAATACGACTCACTATAGGGCGGCCGGAATTCGTCGACTGGATCCGGTACCGAGGAGATCTGCC  
GCC**CGATCGCC**

ATGCAGTCCGGGCGCGGCCCACTTCCAGCCCCGGCCTGGCCTTGGCTTTGACCCTGACTATGTTGG  
CCAGACTTGCATCCGCGGCTTCTTCTTCGGTGAGAACCACCTGGAGGTGCCTGTGGCCACGGCTCTGAC  
CGACATAGACCTGCAGCTGCAGTCTCCACGTCCAGCCGAAGCCCTCTTCTCCTGGCAGCAGGCCCA  
GCTGACCACCTCCTGCTGCAGCTCTACTCTGGACGCTGCAGGTGACTTGTCTGGGCCAGGAGGAGC  
TGAGGCTGCAGACTCCAGCAGAGACGCTGCTGAGTGACTCCATCCCCCACTGTGGTGTGACTGTCGT  
AGAGGGCTGGGCCACGTTGTGAGTCGATGGGTTTCTGAACGCCTCCTCAGCAGTCCAGGAGCCCCCTA  
GAGGTCCCTATGGGCTCTTGTGGGGCACTGGGACCCCTGGCCTGCCCTACCTGAGGGGAACCGCC  
GACCCCTGAGGGGTTGCCTCCATGCAGCCACCCTCAATGGCCGACGCTCCTCCGGCCTCTGACCCCGA  
TGTGCATGAGGGCTGTGCTGAAGAGTTTCTGCCAGTGATGATGTGGCCCTGGGCTTCTCTGGGCCCCAC  
TCTCTGGCTGCCTTCCCTGCCTGGGGCACTCAGGACGAAGGAACCTAGAGTTTACACTCACCACACAGA  
GCCGGCAGGCACCCTTGGCCTTCCAGGCAGGGGGCCGGCTGGGGACTTCATCTATGTGGACATATTTGA  
GGGCCACCTGCGGGCCGTGGTGGAGAAGGGCCAGGGTACCGTATTGCTCCACAACAGTGTGCTGTGGCC  
GATGGGCAGCCCCATGAGGTGAGTGTCCACATCAATGCTCACCGGCTGGAATCTCCGTGGACCAAGTACC  
CTACGCATACTTCGAACCGAGGAGTCTCAGCTACCTGGAGCCACGGGGCAGTCTCCTTCTCGGGGGCT  
GGATGCAGAGGCCTCTCGTCACCTCCAGGAACCCGCTGGGCTGACACCAGAGGCCACCAATGCCTCC  
CTGCTGGGCTGCATGGAAGACCTCAGTGTCAATGGCCAGAGGGGGGCTGCGGGAAGCTTTGCTGACGC  
GCAACATGGCAGCCGGCTGCAGGCTGGAGGAGGAGGAGTATGAGGACGATGCCTATGGACATTATGAAGC  
TTTCTCCACCCTGGCCCTGAGGCTTGGCCAGCCATGGAGCTGCCTGAGCCATGCGTGCCTGAGCCAGGG  
CTGCCTCCTGTCTTTGCCAATTTACCCAGCTGCTGACTATCAGCCCACTGGTGGTGGCCGAGGGGGCA  
CAGCCTGGCTTGTGAGTGGAGGCATGTGCAGCCACGCTGGACCTGATGGAGGCTGAGTGCCAAATCCCA  
GGTGTGTTGAGGCTGACCCGAGGGGACGCCATGGCGAGCTCGAGCTGGACATCCGGGAGCCAGGCA



[View online »](#)

CGAAAAATGTTACCCCTCCTGGACGTGGTGAACCGCAAGGCCCGCTTCATCCACGATGGCTCTGAGGACA  
 CCTCCGACCAGCTGGTGTCTGGAGGTGTCGGTGACGGCTCGGGTGCCCATGCCCTCATGCCTTCGGAGGGG  
 CCAAACATACCTCCTGCCATCCAGGTCAACCTGTCAATGACCCACCCACATCATCTTCCCACATGGC  
 AGCCTCATGGTGATCCTGGAACACACGCAGAAGCCGCTGGGGCCTGAGGTTTTCCAGGCCTATGACCCGG  
 ACTCTGCCTGTGAGGGCCTCACCTTCCAGGTCTTGGCACCTCCTCTGGCCTCCCCGTGGAGCGCCGAGA  
 CCAGCCTGGGGAGCCGGCGACCGAGTTCTCTGCCGGGAGTTGGAGGCCGGCAGCCTAGTCTATGTCAC  
 CGCGGTGGTCTGCACAGGACTTGACGTTCCGGGTACGGATGGACTGCAGGCCAGCCCGCCGACCGC  
 TGAAGGTGGTGGCCATCCGGCCGGCCATACAGATCCACCGCAGCACAGGGTTGCGACTGGCCCAAGGCTC  
 TGCCATGCCCATCTTGCCCGCAACCTGTCCGGTGGAGACCAATGCCGTGGGGCAGGATGTGAGCGTGCTG  
 TTCCCGCTCACTGGGGCCTGCAGTTTGGGGAGCTGCAGAAGCAGGGGGCAGGTGGGGTGGAGGGTGTG  
 AGTGGTGGGCCACACAGGCGTTCACCAGCGGGATGTGGAGCAGGGCCGCGTGAGGTACCTGAGCACTGA  
 CCCACAGCACCACGTTACGACACCGTGGAGAACCTGGCCCTGGAGGTGCAGGTGGGCCAGGAGATCCTG  
 AGCAATCTGTCTTCCAGTGACCATCCAGAGAGCCACTGTGTGGATGCTGCGGTGGAGCCACTGCACA  
 CTCAGAACACCCAGCAGGAGACCCTCACACAGCCACCTGGAGGCCACCCTGGAGGAGGACGGCCCAAG  
 CCCCCAACCTTCCATTATGAGGTGGTTCAGGCTCCCAGGAAAGGCAACCTTCAACTACAGGGCACAAAG  
 CTGTGAGATGGCCAGGGCTTACCCAGGATGACATACAGGCTGGCCGGGTGACCTATGGGGCCACAGCAC  
 GTGCCTCAGAGGCACTCGAGGACACCTTCCGTTTCCGTGTACAGCTCCACCATATTTTCCCCACTCTA  
 TACCTTCCCCATCCATTGGTGGTGACCCAGATGCGCCTGTCCTCACCAATGTCCTCCTCGTGGTGCT  
 GAGGGTGGTGAGGGTGTCTCTGTGCTGACCACCTCTTTGTCAAGAGTCTCAACAGTGCCAGTACCTCT  
 ATGAGGTGATGGAGCGGGCCCGCCATGGGAGGTTGGCTTGGCGTGGGACACAGGACAAGACCACTATGGT  
 GACATCCTTACCAATGAAGACCTGTTCGGTGGCCGGTGGTCTACCAGCATGATGACTCCGAGACCACA  
 GAAGATGATATCCATTGTTGCTACCCGCCAGGGCGAGAGCAGTGGTGCATGGCCTGGGAGGAGGTAC  
 GGGGTGTCTTCCGAGTGGCCATCCAGCCGTGAATGACCACGCCCTGTGCAGACCATCAGCCGGATCTT  
 CCATGTGGCCCGGGTGGCGGGCTGCTGACTACAGACGACGTGGCCTTCCAGCATGCTGACTCGGGC  
 TTTGCTGACGCCAGCTGGTGCTTACCCGAAGGACCTCCTCTTTGGCAGTATCGTGGCCGTAGATGAGC  
 CCACGCGGCCATCTACCGCTTACCCAGGAGGACCTCAGGAAGAGGCGAGTACTGTTCTGTCAGTCAAG  
 GGCTGACCGTGGTGGATCCAGCTGCAGGTGTCCGACGGGCAACACCAGGCCACTGCGCTGCTGGAGGTG  
 CAGGCCTCGAAACCTACCTCCGTGTGGCAACGGCTCCAGCCTTGTGGTCCCTCAAGGAGGCCAGGGCA  
 CCATCGACACGGCCGTGCTCCACCTGGACACCAACCTCGACATCCGCAGTGGGGATGAGGTCCACTACCA  
 CGTCACAGCTGGCCCTCGCTGGGACAGCTAGTCCGGGTGGTCCAGCCAGCCACAGCCTTCTCCCAGCAG  
 GACCTGCTGGATGGGGCCGTTCTCTATAGCCACAATGGCAGCCTCAGCCCCGAGACACCATGGCCTTCT  
 CCGTGGAAAGCAGGGCCAGTGCACACGGATGCCACCCTACAAGTGACCATTGCCCTAGAGGGCCACTGGC  
 CCCACTGAAGCTGGTCCGGCACAAGAAGATCTACGTCTTCCAGGGAGAGGCGAGTGCAGATCAGAAGGGAC  
 CAGCTGGAGGCAGCCAGGAGGCACTGCCACCTGCAGACATCGTATTCTCAGTGAAGAGCCACCAGGTG  
 CCGGTACCTGGTGTGGTGTGCGGTGGCGCCTTGGCAGATGAGCCACCCAGCCTGGACCCCGTGCAGAG  
 CTTCTCCCAGGAGGCACTGGACACAGGCAAGGCTCTGTACCTGCACTCCCGCCCTGAGGCCTGGAGCGAT  
 GCCTTCTCGTGGATGTGGCCTCAGGCCTGGGTGCTCCCTCGAGGGCGTCTTGTGGAGCTGGAGGTGC  
 TGCCCGCTGCCATCCCCTAGAGGGCGAAAACCTCAGCGTCCCTGAGGGTGGCAGCCTCACCTGGCCCC  
 TCCACTGCTCCGTGTCTCCGGCCCTACTTCCCCTCTCCTGGGCCCTCAGCCTGCAGTGTGGAGCCA  
 CCCCAGCATGGAGCCCTGCAGAAGGAGGACGGACCTCAAGCCAGGACCCTCAGCGCCTTCTCCTGGAGAA  
 TGGTGAAGAGCAGCTGATCCGCTACGTGCATGACGGGAGCGAGACACTGACAGACAGTTTTGCTCTGAT  
 GGCTAATGCCTCCGAGATGGATCGCCAGAGCCATCCTGTGGCCTTCACTGTCACTGTCTGCTGTCAAT  
 GACCAACCCCCATCCTCACTACAAACACAGGCCTGCAGATGTGGGAGGGGGCCACTGCGCCATCCCTG  
 CGGAGGCTCTGAGGAGCACGGACGGCGACTCTGGGTCTGAGGATCTGGTCTACACCATCGAGCAGCCAG  
 CAACGGGCGGGTAGTGTGCGGGGGGCGCCGGGCACTGAGGTGCGCAGCTTACGCAGGCCAGCTGGAC  
 GCGGGCTCGTGCTGTTCTCACACAGAGGAACCTGGATGGAGGCTTCCGCTTCCGCTCTCTGACGGCG  
 AGCACACTTCCCCGGACACTTCTCCGAGTGACGGCCAGAAGCAAGTGTCTCTCGTGAAGGGCAG  
 CCAGACTGACTGTCTGCCAGGGTCCGTCCAGCCACTCAGCAGTCAAGCCCTCAGGGCCAGCTCCAGC  
 GCAGGCACTGACCCCAAGCTCCTGCTTACCGTGTGGTGCGGGGCCCCAGCTAGGCCGGCTGTTCCACG  
 CCCAGCAGGACAGCACAGGGGAGGCCCTGGTGAACCTCACTCAGGCAGAGGTCTACGCTGGGAATATTCT  
 GTATGAGCATGAGATGCCCCCGAGCCCTTTGGGAGGCCATGATACCTTAGAGCTCCAGCTGTCTCTG  
 CCGCTGCCCGGACGTGGCCGCCACCTTGTGTGGTGTGTCTTTGAGGCTGCCTGTCCCCAGCACC

CCAGCCACCTCTGGAAGAACAAGGTCTCTGGGTCCCCGAGGGCCAGCGGCCAGGATCACCGTGGCTGC  
TCTGGATGCCTCCAATCTCTTGGCCAGCGTTCCATCACCCAGCGCTCAGAGCATGATGTCTTCCAG  
GTCACACAGTTCCCCAGCCGGGGCCAGCTGTTGGTGTCCGAGGAGCCCTCCATGCTGGGCAGCCCCACT  
TCCTGCAGTCCCAGCTGGCTGCAGGGCAGCTAGTGTATGCCACGGCGGTGGGGGCACCCAGCAGGATGG  
CTTCCACTTTCGTGCCACCTCCAGGGGCCAGCAGGGGCCCTCCGTGGCTGGACCCAAACCTCAGAGGCC  
TTTGCCATCACGGTGAGGGATGTAATGAGCGGGCCCCCAGCCACAGGCCTCTGTCCACTCCGGCTCA  
CCCGAGGCTCTCGTGCCCCATCTCCGGGGCCAGCTGAGTGTGGTGGACCCAGACTCAGCTCCTGGGGA  
GATTGAGTACGAGGTCCAGCGGGCACCCACAACGGCTTCTCAGCCTGGTGGTGGTGGCCTGGGGCCC  
GTGACCCGCTTACGCAAGCCGATGTGGATTACAGGGCGGCTGGCCTTCTGTGGCAACGGGAGCAGCTGG  
CAGGCATCTTCCAGCTGAGCATGTCTGATGGGGCCAGCCACCCCTGCCATGTCCCTGGCTGTGGACAT  
CCTACCATCCGCCATCGAGGTGCAGCTGCGGGCACCCCTGGAGGTGCCCAAGCTTTGGGGCGCTCCTCA  
CTGAGCCAGCAGCAGCTCCGGTGGTTTTCAGATCGGGAGGAGCCAGAGGCAGCATAACCGCTCATCCAGG  
GACCCAGTATGGGCATCTCTGGTGGGGCGGGCCACCTCGGCCTCAGCCAATTCCAGATAGACCA  
GGGCGAGGTGGTCTTTCCTTACCAACTTCTCCTCTCATGACCACTCAGAGTCTGGCACTGGCT  
AGGGGTGTCAATGCATCAGCCGTAGTGAACGTCACTGTGAGGGCTCTGCTGCATGTGTGGCAGGTGGC  
CATGGCCCCAGGGTGCCACCCTGCGCCTGGACCCACCGTCTAGATGCTGGCGAGCTGGCAACCGCAC  
AGGCAGTGTGCCGCTTCCGCCTCCTGGAGGGACCCCGCATGGCCGCTGGTCCGCTGCCCCGAGCC  
AGGACGGAGCCCGGGGGCAGCCAGCTGGTGGAGCAGTTCACTCAGCAGGACCTTGAGGACGGGAGGCTGG  
GGCTGGAGGTGGGCAGGCCAGAGGGGAGGGCCCCGGCCCCGAGGTGACAGTCTCACTCTGGAGCTGTG  
GGCACAGGGCGTCCCGCTGTGTGGCCTCCCTGGACTTTGCCACTGAGCCTTACAATGCTGCCCGGCC  
TACAGCGTGGCCCTGCTCAGTGTCCCGAGGGCCCGGGACGGAAGCAGGGAAGCCAGAGAGCAGCACCC  
CCACAGGCGAGCCAGGCCCATGGCATCCAGCCCTGAGCCCGCTGTGGCAAGGGAGGCTTCTGAGCTT  
CCTTGAGGCCAACATGTTTCAGCGTCATCATCCCATGTGCCTGGTACTTCTGCTCCTGGCGCTCATCCTG  
CCCCTGCTCTTCTACCTCCGAAAACGCAACAAGACGGGCAAGCATGACGTCCAGGTCCTGACTGCCAAGC  
CCCACAGCGCCTGGCTGGTGCACCGAGACCTTTCGCAAGGTGGAGCCAGGCCAGGCCATCCCGCTCAC  
AGCTGTGCCTGGCCAGGGGCCCTCCAGGAGGCCAGCCTGACCCAGAGCTGCTGCAGTTCTGCCGGACA  
CCCAACCCTGCCCTTAAGAATGGCCAGTACTGGGTG

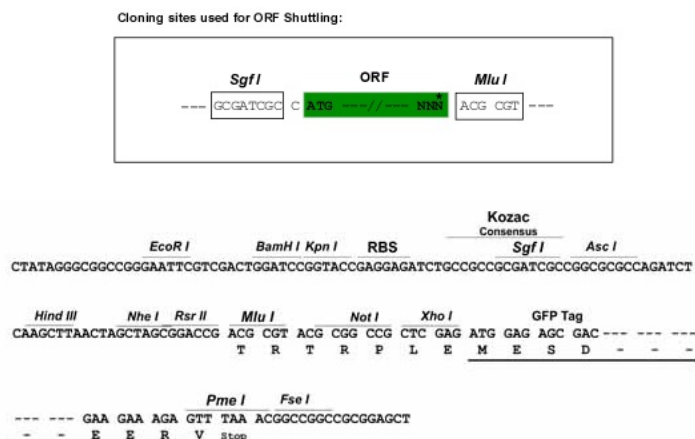
ACGCGTACGCGGCCGCTCGAG - GFP Tag - GTTAA

**Protein Sequence:** >RG218462 representing NM\_001897  
 Red=Cloning site Green=Tags(s)

MQSGPRPPLPAPGLALALTLMLARLASAASFFGENHLEVPVATALTDIDLQLQFSTSQPEALLLAAAGP  
 ADHLLLQLYSGRLQVRLVLGQEELRLQTPAETLLSDSIPHTVVLTVVEGWATLSVDGFLNASSAVPGAPL  
 EVPYGLFVGGTGTGLPYLRGTSRPLRGCLHAATLNGRSLRPLTPDVHEGCAEEF SASDDVALGFSGPH  
 SLAAFPWGTQDEGTLEFTLTTQSRQAPLAFQAGGRRGDFIYVDIFEGHLRAVVEKGGTVLLHNSVPVA  
 DGQPHEVSVHINHRLEISVDQYPTHTSNRGVLSYLEPRGSLLLGGLDAEASRHLQEHRLGLTPEATNAS  
 LLGCMEDLSVNGQRRGLREALLTRNMAAGCRLEEEYEDDAYGHYEAFTLAPEAWPAMELPEPCVPEPG  
 LPPVFANFTQLLTISPLVVAEGGTAWLEWRHVQPTLDLMEALRKSQVLSVTRGARHGELELDIPGAQA  
 RKMFTLLDVVNRKARFIHDGSEDTSDQLVLEVSVTARVPMPSCLRRGQTYLLPIQVNPVNDPPHIIIFPHG  
 SLMVILEHTQKPLGPEVFQAYDPDSACEGLTFQVLGTSSGLPVERRDQPGEPATEFSCRELEAGSLVYVH  
 RGGPAQDLTFRVSDGLQASPPATLKVVAIRPAIQIHRSTGLRLAQGSAMPILPANLSVETNAVGDQVSVL  
 FRVTGALQFGELQKQAGGVVEGAEWATQAFHQRDVEQGRVRYLSTDPQHAYDTVENLALVEVQVQGEIL  
 SNLSFPVTIQRATVWMLRLEPLHTQNTQQETLTAHLEATLEEAGSPPTFHVEVQAPRKGNLQLQGR  
 LSDGQGFQDDIQAGRVTYGATARASEAVEDTFRFRVTAPPYFSPLYTFPIHIGGDPDAPVLTNVLVVP  
 EGEGVLSADHLFVKSLNSASYLYEMERPRHGRLLAWRGTQDKTMMVTSFTNEDLLRGRLLVYQHDDSETT  
 EDDIPFVATRQGESSGDMAWEEVRGVFVVAIQPVNDHAPVQTI SRIFHVARGRRLLTTDDVAFSDADSG  
 FADAQLVLTRKDLLFGSIVAVDEPTRPIYRFTQEDLRKRRVLFVHSGADRGIQLQVSDGQHQATALLEV  
 QASEPYLRVANGSSLVPPQGGQGTIDTAVLHLDNLDIRSGDEVHYHVTAGPRWGQLVRAGQPATAFSQQ  
 DLLDGAVALYSHNGSLSPRDTMAFVVEAGPVHTDATLQVTIALEGPLAPLKLVRHKKIYVFQGEAAEIRR  
 QLEAAQEA VPPADIVFSVKSPPSAGYLVMVSRGALADEPPSLDPVQSFSQEA VDTGRVLYLHSRPEAWS  
 AFSLDVASGLGAPLEGLVLEVLPAAIPLAQNFSVPEGGSLTLAPLLRVSGPYFPTLLGLSLQVLEP  
 PQHGALQKEDGQPARTLSAFSWRMVEEQLIRYVHDGSETLTDSEFVLMANASEMDRQSHPVAFVTVLPVN  
 DQPPILLTNTGLQMWEGATAPIPAEALRSTDGDSGSEDLVYTI EQPSNGRVVLRGAPGTEVRSFTAQLD  
 GGLVLFSHRGLTDGGFRFRLSDGEHTSPGHFFRVTAQKQVLLSLKGSQTLTVCPGQSVQPLSSQTLRASS  
 AGTDPQLLLYRVVRGPQLGRLFHAQQDSTGEALVNFTQAEVYAGNILEHEMPPEPFWEAHDTELEQLSS  
 PPARDVAA TLAVAVSFEAACQHPHSLWKNKGLWVPEGQRARITVAALDASNLLASVPSQRSEHDVLFQ  
 VTQFP SRGQLLVSEEPLHAGQPHFLQSQAAGQLVYAHGGGTQQDGFHFRAHLQGPAGASVAGPQTSEA  
 FAITVRDVNERPPQPQASVPLRLTRGSRAPI SRAQLSVVDPDSAPGIEIEYVQRAPHNGFLSLVGGGLGP  
 VTRFTQADVDSGRLAFVANGSSVAGIFQLSMSDGASPLPMSLAVDILPSAIEVQLRAPLEVPQALGRSS  
 LSQQQLRVVSDREEPEAA YRLIQGPQYGHLLVGGRPTSAFSQFQIDQGEVVFATNFSSSHDHFVRLALA  
 RGVNASAVVNTVRALLHWAGGPWPQGATLRLDPTVLDAGELANRTGSVPRFRLLEGPRHGRVVRVPR  
 RTEPGGSQLEVFTQQDLEDGRLGLEVGRPEGRAPGAGDSL TLELWAQGVPPAVASLDFATEPYNAARP  
 YSVALLSVPEARTEAGKPESSPTGEPGPMASPEPAVAKGGFLSFLANMFSVIIPMCLVLLLLALIL  
 PLLFYLRKRNTGKHDVQVLTAKPRNGLAGDTETFRKVEPGQAIPLTAVPGQGGPPGQDPPELLQFCRT  
 PNPALKNGQYVW

TRTRPLE - GFP Tag - V

**Restriction Sites:** Sgfl-MluI

**Cloning Scheme:**


**ACCN:** NM\_001897

**ORF Size:** 6966 bp

**OTI Disclaimer:** Due to the inherent nature of this plasmid, standard methods to replicate additional amounts of DNA in E. coli are highly likely to result in mutations and/or rearrangements. Therefore, OriGene does not guarantee the capability to replicate this plasmid DNA. Additional amounts of DNA can be purchased from OriGene with batch-specific, full-sequence verification at a reduced cost. Please contact our customer care team at [custsupport@origene.com](mailto:custsupport@origene.com) or by calling 301.340.3188 option 3 for pricing and delivery.

The molecular sequence of this clone aligns with the gene accession number as a point of reference only. However, individual transcript sequences of the same gene can differ through naturally occurring variations (e.g. polymorphisms), each with its own valid existence. This clone is substantially in agreement with the reference, but a complete review of all prevailing variants is recommended prior to use. [More info](#)

**OTI Annotation:** This clone was engineered to express the complete ORF with an expression tag. Expression varies depending on the nature of the gene.

**Components:** The ORF clone is ion-exchange column purified and shipped in a 2D barcoded Matrix tube containing 10ug of transfection-ready, dried plasmid DNA (reconstitute with 100 ul of water).

**Reconstitution Method:**

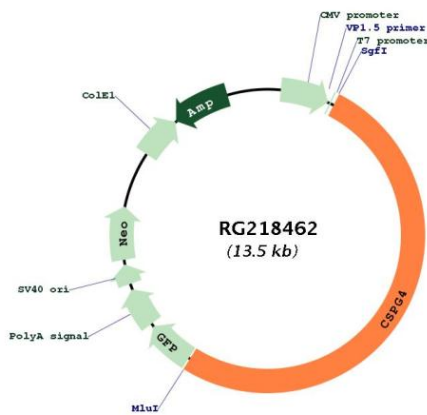
1. Centrifuge at 5,000xg for 5min.
2. Carefully open the tube and add 100ul of sterile water to dissolve the DNA.
3. Close the tube and incubate for 10 minutes at room temperature.
4. Briefly vortex the tube and then do a quick spin (less than 5000xg) to concentrate the liquid at the bottom.
5. Store the suspended plasmid at -20°C. The DNA is stable for at least one year from date of shipping when stored at -20°C.

**RefSeq:** [NM\\_001897.3](#), [NP\\_001888.2](#)

RefSeq Size: 7896 bp  
 RefSeq ORF: 6969 bp  
 Locus ID: 1464  
 UniProt ID: [Q6UVK1](#)  
 Cytogenetics: 15q24.2  
 Protein Families: Transmembrane  
 Gene Summary:

A human melanoma-associated chondroitin sulfate proteoglycan plays a role in stabilizing cell-substratum interactions during early events of melanoma cell spreading on endothelial basement membranes. CSPG4 represents an integral membrane chondroitin sulfate proteoglycan expressed by human malignant melanoma cells. [provided by RefSeq, Jul 2008]

### Product images:



Circular map for RG218462