

Product datasheet for **RG218429**

Netrin 1 (NTN1) (NM_004822) Human Tagged ORF Clone

Product data:

Product Type:	Expression Plasmids
Product Name:	Netrin 1 (NTN1) (NM_004822) Human Tagged ORF Clone
Tag:	TurboGFP
Symbol:	Netrin 1
Synonyms:	MRMV4; NTN1L
Mammalian Cell Selection:	Neomycin
Vector:	pCMV6-AC-GFP (PS100010)
E. coli Selection:	Ampicillin (100 ug/mL)



[View online »](#)

ORF Nucleotide Sequence:

>RG218429 representing NM_004822
 Red=Cloning site Blue=ORF Green=Tags(s)

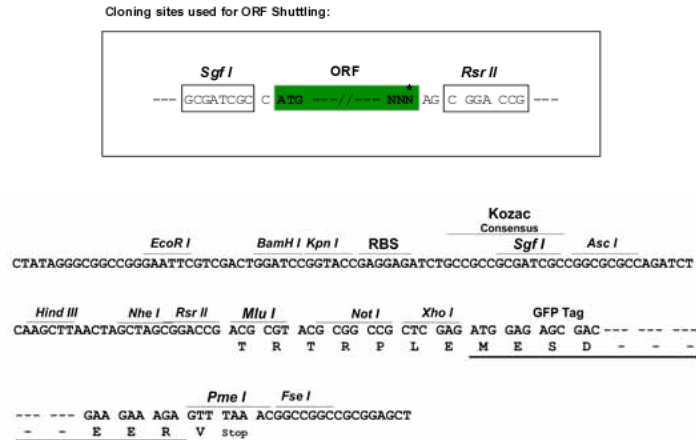
TTTTGTAATACGACTCACTATAGGGCGGCCGGGAATTCGTCGACTGGATCCGGTACCGAGGAGATCTGCC
 GCC**CGGATCGCC**

ATGATGCGCGCAGTGTGGGAGGCGCTGGCGGCGCTGGCGGCGGTGGCGTGCCTGGTGGGCGCGGTGCGCG
 GCGGGCCCGGGCTCAGCATGTTTCGCGGGCCAGGCGGCGCAGCCGATCCCTGCTCGGACGAGAACGGCCA
 CCCGCGCCGCTGCATCCCGGACTTTGTCAATGCGGCCTTCGGAAGGACGTGCGCGTGTCCAGCACCTGC
 GCCCGGCCCGGCGCGCTACTGCGTGGTGAAGGAGCGCGGCGAGGAGCGGCTGCGCTCGTCCACCTCT
 GCAACGCGTCCGACCCCAAGAAGGCGCACCCGCCGCCTTCCTCACCGACCTCAACAACCCGCACAACCT
 GACGTGCTGGCAGTCCGAGAACTACCTGCAGTTCGCGCACACGTACGCTCACACTGTCCCTCGGCAAG
 AAGTTCGAAGTGACCTACGTGAGCCTGCAGTTCGCTCGCGCGGCCGAGTCCATGGCCATCTACAAGT
 CCATGGACTACGGGCGCAGTGGGTGCCCTTCAGTTCCTACTCCACGAGTGGCGCAAGATGTACAACCG
 GCCGACCGCGCGCCCATCACCAAGCAGAACGAGCAGGAGGCCGTGTGCACCGACTCGCACACCGACATG
 CGCCCGCTCTCGGGCGGCCCTCATCGCCTTCAGCAGCTGGACGGGCGGCCCTCGGCGCACGACTTCGACA
 ACTCGCCCGTGTGCAGGACTGGGTACGGCCACAGACATCCGCGTGGCCTTCAGCCGCCTGCACACGTT
 CGGCGACGAGAACGAGGACGACTCGGAGCTGGCGCGGACTCGTACTTCTACGCGGTGTCCGACCTGCAG
 GTGGGCGGCCGCTGCAAGTGCAACGGCCACGCGGCCCGCTGCGTGCAGCGACCGCACCGACAGCCTGGTGT
 GCGACTGCAGGCACAACACGGCCGGCCGGAGTGCAGCCGCTGCAAGCCCTTCCACTACGACCGGCCCTG
 GCAGCGGCCACAGCCCGCAAGCAACGAGTGCCTGGCTGTAAGTCAACCTGCATGCCCGCGCTGC
 CGCTTCAACATGGAGCTCTACAAGCTTTCGGGGCGCAAGAGCGGAGGTGTCTGCCTCAACTGTCCGACA
 ACACCGCCGGCCGCCACTGCCATTACTGCAAGGAGGGCTACTACCGCGACATGGCAAGCCCATCACCA
 CCGGAAGGCCTGCAAGCCTGTGATTGCCACCCTGTGGGTGCTGCTGGCAAAACCTGCAACCAAACCAAC
 GGCCAGTGTCCCTGCAAGGACGGCGTGACGGGTATCACCTGCAACCGCTGCGCCAAGGCTACCAGCAGA
 GCCGCTCTCCATCGCCCTGCATAAAGATCCCTGTAGCGCCGCGGACGACTGCAGCCAGCAGCGTGGA
 GGAGCCTGAAGACTGCGATTCTACTGCAAGGCCTCCAAGGGGAAGCTGAAGATTAACATGAAAAAGTAC
 TGCAAGAAGGACTATGCCGTCCAGATCCACATCCTGAAGGCGGACAAGGCGGGGACTGGTGAAGTTCA
 CGGTGAACATCATCTCCGTGATAAGCAGGGCACGAGCCGATCCGCGCGGTGACCAGAGCCTGTGGAT
 CCGCTCGCGGGACATCGCCTGCAAGTGTCCAAAATCAAGCCCTCAAGAAGTACCTGCTGCTGGGCAAC
 GCGGAGGACTCTCCGGACCAGAGCGGCATCGTGGCCGATAAAAGCAGCCTGGTGTCCAGTGGCGGGACA
 CGTGGGCGCGGCGCTGCGCAAGTTCAGCAGCGTGAGAAGAAGGCAAGTGAAGAAGGCC

AG**CGGACCG**ACGCGT**ACGCGGCCGCTCGAG** - GFP Tag - GTTTAA

Restriction Sites:

Sgfl-RsrII

Cloning Scheme:


ACCN: NM_004822

ORF Size: 1812 bp

OTI Disclaimer: Due to the inherent nature of this plasmid, standard methods to replicate additional amounts of DNA in E. coli are highly likely to result in mutations and/or rearrangements. Therefore, OriGene does not guarantee the capability to replicate this plasmid DNA. Additional amounts of DNA can be purchased from OriGene with batch-specific, full-sequence verification at a reduced cost. Please contact our customer care team at custsupport@origene.com or by calling 301.340.3188 option 3 for pricing and delivery.

The molecular sequence of this clone aligns with the gene accession number as a point of reference only. However, individual transcript sequences of the same gene can differ through naturally occurring variations (e.g. polymorphisms), each with its own valid existence. This clone is substantially in agreement with the reference, but a complete review of all prevailing variants is recommended prior to use. [More info](#)

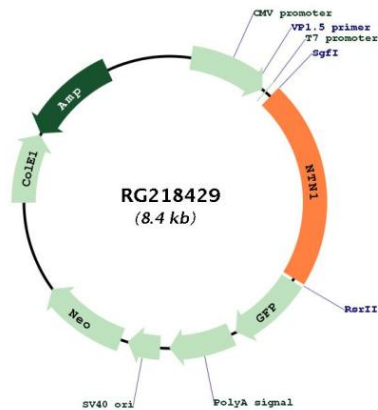
OTI Annotation: This clone was engineered to express the complete ORF with an expression tag. Expression varies depending on the nature of the gene.

Components: The ORF clone is ion-exchange column purified and shipped in a 2D barcoded Matrix tube containing 10ug of transfection-ready, dried plasmid DNA (reconstitute with 100 ul of water).

- Reconstitution Method:**
1. Centrifuge at 5,000xg for 5min.
 2. Carefully open the tube and add 100ul of sterile water to dissolve the DNA.
 3. Close the tube and incubate for 10 minutes at room temperature.
 4. Briefly vortex the tube and then do a quick spin (less than 5000xg) to concentrate the liquid at the bottom.
 5. Store the suspended plasmid at -20°C. The DNA is stable for at least one year from date of shipping when stored at -20°C.

RefSeq: [NM_004822.1, NP_004813.1](#)
RefSeq Size: 1989 bp
RefSeq ORF: 1815 bp
Locus ID: 9423
UniProt ID: [O95631](#)
Cytogenetics: 17p13.1
Protein Families: Druggable Genome, Secreted Protein, Transmembrane
Protein Pathways: Axon guidance
Gene Summary: Netrin is included in a family of laminin-related secreted proteins. The function of this gene has not yet been defined; however, netrin is thought to be involved in axon guidance and cell migration during development. Mutations and loss of expression of netrin suggest that variation in netrin may be involved in cancer development. [provided by RefSeq, Jul 2008]

Product images:



Circular map for RG218429