

Product datasheet for **RG218403**

KiSS1 receptor (KISS1R) (NM_032551) Human Tagged ORF Clone

Product data:

Product Type:	Expression Plasmids
Product Name:	KiSS1 receptor (KISS1R) (NM_032551) Human Tagged ORF Clone
Tag:	TurboGFP
Symbol:	KiSS1 receptor
Synonyms:	AXOR12; CPPB1; GPR54; HH8; HOT7T175; KISS-1R
Mammalian Cell Selection:	Neomycin
Vector:	pCMV6-AC-GFP (PS100010)
E. coli Selection:	Ampicillin (100 ug/mL)
ORF Nucleotide Sequence:	>RG218403 representing NM_032551 Red=Cloning site Blue=ORF Green=Tags(s)

TTTTGTAATACGACTCACTATAGGGCGGCCGGAATTCGTCGACTGGATCCGGTACCGAGGAGATCTGCC
GCC**CGATCGCC**

ATGCACACCGTGGCTACGTCCGGACCCAACGCGTCTGGGGGGCACCGGCCAACGCCTCCGGTGCCTGG
GCTGTGGCGCCAACGCCTCGGACGGCCAGTCCCTTCGCCGCGGGCCGTGGACGCCTGGCTGTCGCCGT
CTTCTTCGCGGCGCTGATGCTGCTGGGCTGGTGGGAACTCGTGGTCACTACGTCATCTGCCGCCAC
AAGCCGATGCGGACCGTGACCAACTTCTACATCGCCAACCTGGCGCCACGGACGTGACCTTCTCTCTGT
GCTGCGTCCCCTTACGCGCCTGCTGTACCCGCTGCCCGCTGGGTGCTGGGCGACTTCATGTGCAAGTT
CGTCAACTACATCCAGCAGGTCTCGGTGCAGGCCACGTGTGCCACTCTGACCGCCATGAGTGTGGACCGC
TGGTACGTGACGGTGTCCCGTTGCGCGCCTGCACCGCCGACGCCCGCCTGGCGCTGGCTGTACGCC
TCAGCATCTGGGTAGGCTCTGCGCGGTGTCTGCGCCGCTGCTCGCCCTGCACCGCCTGTACCCGGGCC
GCGCGCTACTGCAGTGAGGCCTTCCCCAGCCGCGCCCTGGAGCGCGCCTTCGCACTGTACAACCTGCTG
GCGCTGTACCTGCTGCCGCTGCTCGCCACCTGCGCCTGCTATGCGGCCATGCTGCGCCACCTGGGCGGG
TCGCCGTGCGCCCCGCGCCCGGATAGCGCCCTGCAGGGCAGGTGCTGGCAGAGCGCGCAGGCCGCGT
GCGGGCCAAGGTCTCGCGGCTGGTGGCGCCGCTGGTCTGCTCTTCGCCGCTGCTGGGGCCCCATCCAG
CTGTTCTGGTGTGACGGCCTGGGCCCCGCGGCTCCTGGCACCCACGCAGCTACGCGCCTACGCGC
TTAAGACCTGGGCTCACTGCATGTCTACAGCAACTCCGCGCTGAACCCGCTGCTACGCCTTCTGGG
CTCGCACTTCCGACAGGCCTTCCGCCGCTGCTGCCCTGCGCGCCGCGCCCGCCCCGCGCCCCCGCGG
CCCGGACCTCGGACCCCGCAGCCCCACGCGGAGCTGCTCCGCTGGGGTCCCACCCGCCCCCGCCA
GGGCGCAGAAGCCAGGGAGCAGTGGGCTGGCCGCGCGGGCTGTGCTCCTGGGGAGGACAACGCCCC
TCTC

AC**GGCCGCTCGAG** - GFP Tag - GTTTAA



[View online >](#)

Protein Sequence: >RG218403 representing NM_032551
 Red=Cloning site Green=Tags(s)

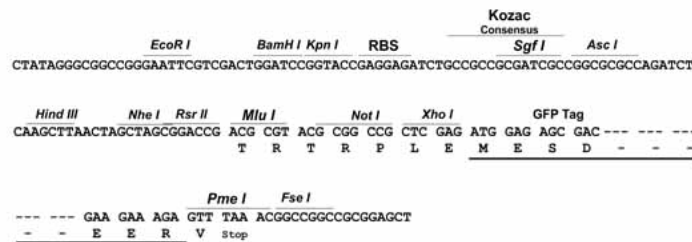
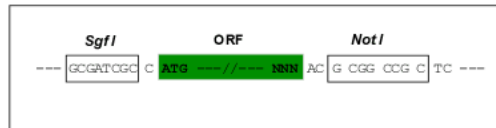
MHTVATSGPNASWGAPANASGCPGCGANASDGPVPSRAVDWL VPLFFAALMLLGLVGNSLVIYVICRH
 KPMRTVTNFYIANLAATDVTFLLCCVPFTALLYPLPGWVLGDFMCKFVNYIQQVSVQATCATLTAMSVDR
 WYVTVFPLRALHRRTPRLALAVLSIIVGSAAVSAPVLALHRLSPGPRAYCSEAFPSRALERAFALYNLL
 ALYLLPLLATCACYAAMLRLGRVAVRPAPADSALQGQVLAERAGAVRAKVSRLVAADVLLFAACWGPIQ
 LFLVLQALGPAGSWHPRSYYAAYALKTWAHCMSYSNSALNPLLYAFLGSHFRQAFRRVPCAPRRRPRR
 PGPSPDAAPHAELLRLGSHPPARAQPKGSSGLAARGLCVLGEDNAPL

TRPLE - GFP Tag - V

Restriction Sites: SgfI-NotI

Cloning Scheme:

Cloning sites used for ORF Shuttling:



ACCN: NM_032551

ORF Size: 1194 bp

OTI Disclaimer: The molecular sequence of this clone aligns with the gene accession number as a point of reference only. However, individual transcript sequences of the same gene can differ through naturally occurring variations (e.g. polymorphisms), each with its own valid existence. This clone is substantially in agreement with the reference, but a complete review of all prevailing variants is recommended prior to use. [More info](#)

OTI Annotation: This clone was engineered to express the complete ORF with an expression tag. Expression varies depending on the nature of the gene.

Components: The ORF clone is ion-exchange column purified and shipped in a 2D barcoded Matrix tube containing 10ug of transfection-ready, dried plasmid DNA (reconstitute with 100 ul of water).

Reconstitution Method:

1. Centrifuge at 5,000xg for 5min.
2. Carefully open the tube and add 100ul of sterile water to dissolve the DNA.
3. Close the tube and incubate for 10 minutes at room temperature.
4. Briefly vortex the tube and then do a quick spin (less than 5000xg) to concentrate the liquid at the bottom.
5. Store the suspended plasmid at -20°C. The DNA is stable for at least one year from date of shipping when stored at -20°C.

RefSeq: [NM_032551.5](#)

RefSeq Size: 1607 bp

RefSeq ORF: 1197 bp

Locus ID: 84634

UniProt ID: [Q969F8](#)

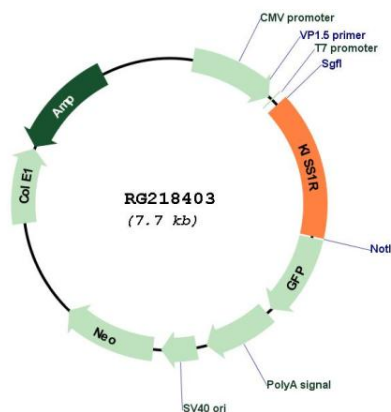
Cytogenetics: 19p13.3

Protein Families: Druggable Genome, GPCR, Transmembrane

Protein Pathways: Neuroactive ligand-receptor interaction

Gene Summary: The protein encoded by this gene is a galanin-like G protein-coupled receptor that binds metastin, a peptide encoded by the metastasis suppressor gene KISS1. The tissue distribution of the expressed gene suggests that it is involved in the regulation of endocrine function, and this is supported by the finding that this gene appears to play a role in the onset of puberty. Mutations in this gene have been associated with hypogonadotropic hypogonadism and central precocious puberty. [provided by RefSeq, Jul 2008]

Product images:



Circular map for RG218403