

Product datasheet for **RG218394**

CCDC78 (NM_173476) Human Tagged ORF Clone

Product data:

| | |
|---------------------------|---|
| Product Type: | Expression Plasmids |
| Product Name: | CCDC78 (NM_173476) Human Tagged ORF Clone |
| Tag: | TurboGFP |
| Symbol: | CCDC78 |
| Synonyms: | C16orf25; coiled-coil domain containing 78; FLJ34512; JFP10; JFP10, C16orf25, FLJ34512, LA16c-444G9.2 |
| Mammalian Cell Selection: | Neomycin |
| Vector: | pCMV6-AC-GFP (PS100010) |
| E. coli Selection: | Ampicillin (100 ug/mL) |
| ORF Nucleotide Sequence: | >RG218394 representing NM_173476 Red=Cloning site Blue=ORF Green=Tags(s) |

TTTTGTAATACGACTCACTATAGGGCGGCCGGAATTCGTCGACTGGATCCGGTACCGAGGAGATCTGCC
GCC**GCGATCGCC**

ATGGAGCAGCAGCCACCACAGGCCCCAGGCCTGGACCTCCCTCTCGCGGGTGGAGAATGTGAGTCCTC
TGGGACTTGCCGCTCCTGCCATGGGGTTGAAGTCTGCCGTTCCCCAAAGGCCAGGAAGGTGCAGGTTC
CTGCACCCTGGGCCTAATTTAGCCAGGAGAGGGACTTTTACAGCTCAGCCAGGCAGGGAGGCGGGACTG
GTGACTGCATGGGAGTGGGGCCACAGCCAGCCTGGGACCCACCTGGGGAATGGGTGGCGGTACCTCCCC
AGGTTGTGCTACGAGCCAAGGACTGGCTGCCAGGAGCTCCTGGGGCACCAGTGTGGGCCACCAGCTT
GGAAGCAGAGGTCCCACCAGATCTAGCGCTCAATAAGGAGCAGCAGCTGCAGATCTCAAGGAGCTGGTC
GACATTCAGATCACAAACCACCCTACATGAGCAGCATGAGGCTGAAATCTTCCAGCTGAAGAGTGAGA
TCCTTCGGCTGGAGAGCCGGTACTGGAGCTGGAGCTGCGAGGAGATGGCACCAGCCAGGCTGTGCACT
CCCAGTGGAGTCTGACCCAGGCATCCCCGGGCAGCAGCCAAAGAGCTCAGACACAAAGCCAGGTGCC
GGACACTCTGATGACCACAGATTCAGGTGCAGCCAAAGAACCATGGACCCCGAGAATGAGCAGCACA
GGCTGGGGAGCGGCTGAGTGTGACGCCACCTAGCTCAGGGGAGAGGGCAGCACCAGAGACCCCAAGCCT
AGGGTCTCATCCAGCCAGCCCTGTGTGCCCCACAGCTGCAGGGGGAAGTGAAGTGGGCGCTGGAGCATCA
GGAGGCCCGGCAGCAGGCACTGGTGACGCGTGTGTGAGTGGCCATCTCACCTGGGGCCCCATCCTGGAGC
AGAGAGAACCCCTGATCGTGGCCTGCTGAGCCTACCCCCGTGTCTTCAGGGCAACCCCTGGGCCGCGAG
CTGCAGGGAGCCCGAGAGGAGGCCAGGGCAGCCGGCAGCGACTGGCCACACAGGCTGTGG

AG**CGGACCG**ACGCGTACGCGGCCGCTCGAG - GFP Tag - GTTTAA



[View online »](#)

Protein Sequence: >RG218394 representing NM_173476
Red=Cloning site Green=Tags(s)

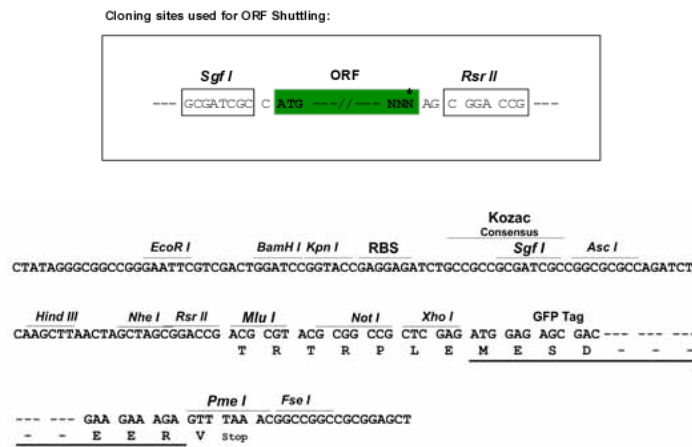
```
MEHAATTGPRPGPPSRRVENVSPLGLAAPAMGLKSARSPKQEGAGSCTLGLISARRGFTTAQPGREAGL
VTAWEWGHSPAWDPPGEWVAVPPQVVLRAKDWLPGAPGGTAVWATSLEAEVPPDLALNKEQQLQISKELV
DIQITTHHLHEQHEAEIFQLKSEILRLESRVLELELRGDGTSQGCAPVVEDPRHPRAAAQELRHKAQVP
GHSDDRHFQVQPKNTMDPENEQHRLGSGVSVQPPSSGERAAPETPSLGSHPASPVCPTAAGGSEVGAGAS
GGPAAGTGDACVSGHLTWGPPILEQREPLIVGLLSLTPVSSGQPWAGSCREPERRRPGQPGSDWPHRLW
```

SGPTRRRLE - GFP Tag - V

Chromatograms: https://cdn.origene.com/chromatograms/ja1870_h06.zip

Restriction Sites: SgfI-RsrII

Cloning Scheme:



ACCN: NM_173476

ORF Size: 1041 bp

OTI Disclaimer: Due to the inherent nature of this plasmid, standard methods to replicate additional amounts of DNA in E. coli are highly likely to result in mutations and/or rearrangements. Therefore, OriGene does not guarantee the capability to replicate this plasmid DNA. Additional amounts of DNA can be purchased from OriGene with batch-specific, full-sequence verification at a reduced cost. Please contact our customer care team at custsupport@origene.com or by calling 301.340.3188 option 3 for pricing and delivery.

The molecular sequence of this clone aligns with the gene accession number as a point of reference only. However, individual transcript sequences of the same gene can differ through naturally occurring variations (e.g. polymorphisms), each with its own valid existence. This clone is substantially in agreement with the reference, but a complete review of all prevailing variants is recommended prior to use. [More info](#)

OTI Annotation: This clone was engineered to express the complete ORF with an expression tag. Expression varies depending on the nature of the gene.

Components: The ORF clone is ion-exchange column purified and shipped in a 2D barcoded Matrix tube containing 10ug of transfection-ready, dried plasmid DNA (reconstitute with 100 ul of water).

Reconstitution Method:

1. Centrifuge at 5,000xg for 5min.
2. Carefully open the tube and add 100ul of sterile water to dissolve the DNA.
3. Close the tube and incubate for 10 minutes at room temperature.
4. Briefly vortex the tube and then do a quick spin (less than 5000xg) to concentrate the liquid at the bottom.
5. Store the suspended plasmid at -20°C. The DNA is stable for at least one year from date of shipping when stored at -20°C.

RefSeq: [NM_173476.2](#), [NP_775747.2](#)

RefSeq Size: 3454 bp

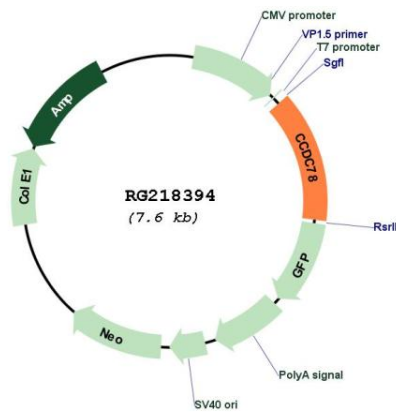
RefSeq ORF: 1043 bp

Locus ID: 124093

Cytogenetics: 16p13.3

Gene Summary: The product of this gene contains two coiled-coil domains. The function of this gene is currently unknown. [provided by RefSeq, Sep 2012]

Product images:



Circular map for RG218394