

Product datasheet for **RG218372**

SF3A1 (NM_001005409) Human Tagged ORF Clone

Product data:

Product Type:	Expression Plasmids
Product Name:	SF3A1 (NM_001005409) Human Tagged ORF Clone
Tag:	TurboGFP
Symbol:	SF3A1
Synonyms:	PRP21; PRPF21; SAP114; SF3A120
Mammalian Cell Selection:	Neomycin
Vector:	pCMV6-AC-GFP (PS100010)
E. coli Selection:	Ampicillin (100 ug/mL)



[View online »](#)

ORF Nucleotide Sequence:

>RG218372 representing NM_001005409
 Red=Cloning site Blue=ORF Green=Tags(s)

TTTTGTAATACGACTCACTATAGGGCGGCCGGGAATTCGTCGACTGGATCCGGTACCGAGGAGATCTGCC
 GCC**CGGATCGCC**

ATGCCGGCCGGACCCGTGCAGGCGGTGCCCCGCCCGCCCGTCCACGGAGCCAAACAGCCCACAG
 AAGAAGAAGCATCTTCAAAGGAGGATTCTGCACCTTCTAAGCCAGTTGTGGGGATTATTTACCCTCCTCC
 AGAGGTACAGAAATATTGTTGACAAGACTGCCAGCTTTGTGGCCAGAAAACGGGCTGAATTTGAAGCTAGG
 ATCCGACAGAACGAGATCAACAACCCCAAGTTCAACTTTCTGAACCCCAATGACCCTTACCATGCCTACT
 ACCGCCACAAGGTCAGCGAGTTCAAGGAAGGGAAGGCTCAGTTTGTGGCCAGGAATGGGCGCCAGTTTCT
 GACCCAGCTGATGCAGAAAGAGCAGCGCAACTACCAGTTTACTTTCTCCGCCACAGCAGCAGCCTCTTC
 AACTACTTCACGAAGCTAGTGGAACAGTACACCAAGATCTTGATTCCACCCAAAGGTTTATTTTCAAAGC
 TCAAGAAAGAGGCTGAAAACCCCGAGAAGTTTGGATCAGGTGTGTACCGAGTGAATGGGCCAAATT
 CCAGGAACGTGAGAGGAAGAAGGAAGAAGAGGAGAAGGAGCGGGTGGCCTATGCTCAGATCGAC
 TGGCATGATTTTGGTGGTGGAAAACAGTGGACTTCCAACCCAATGAGCAAGGGAATTCCTCCCCCA
 CCACGCCAGAGGAGCTGGGGGCCGAATCCTCATTGAGGAGCGCTATGAAAAGTTTGGGGAGAGTGAGGA
 AGTTGAGATGGAGGTCGAGTCTGATGAGGAGGATGACAAAACAGGAGAAGGCGGAGGAGCCTCCTCCAG
 CTGGACCAGGACACCCAAGTACAAGATATGGATGAGGGTTCAGATGATGAAGAAGAAGGGCAGAAAGTGC
 CCCCACCCAGAGACACCCATGCCTCCACCTCTGCCCAACTCCAGACCAAGTATTGTCCGCAAGGA
 TTATGATCCCAAAGCCTCCAAGCCTTGCTCCAGCCCTGCTCCAGATGAGTACTTTGTGTCCCCATT
 ACTGGGGAGAAGATCCCCGCCAGCAAAAATGCAGGAACACATGCGCATTGGACTTCTTGACCCTCGCTGGC
 TGGAGCAGCGGGATCGCTCCATCCGTGAGAAGCAGAGCGATGATGAGGTGTACGCACCAAGTCTGGATAT
 TGAGAGCAGCTTGAAGCAGTTGGCTGAGCGGCGTACTGACATCTTCGGTGTAGAGGAAACAGCCATTGGT
 AAGAAGATCGGTGAGGAGGAGATCCAGAAGCCAGAGGAAAAGGTGACCTGGGATGGCCACTCAGGCAGCA
 TGGCCCGGACCCAGCAGGCTGCCAGGCCAACATCACCTCCAGGAGCAGATTGAGGCCATTCACAAGGC
 CAAAGGCCTGGTGCCAGAGGATGACACTAAAGAGAAGATTGGCCCAGCAAGCCCAATGAAATCCCTCAA
 CAGCCACCGCCACCATCTTCAGCCACCAACATCCCAGCTCGGCTCCACCCATCACTTCAGTGCCCCGAC
 CACCCACAATGCCACCTCCAGTTCGTAACAGTTGTCTCCGAGTACCCGTCATGCCCGGCCCCCAAT
 GGCATCTGTGGTCCGGCTGCCCCAGGCTCAGTGATCGCCCCATGCCGCCATCATCCACGCGCCGAGA
 ATCAACGTGGTGCCCATGCCTCCCTCGGCCCTCTATTATGGCCCCCGCCACCCCATGATTGTGC
 CAACAGCCTTTGTGCCTGCTCCACCTGTGGCACCTGTCCAGCTCCAGCCCAATGCCCCCTGTGCATCC
 CCCACCTCCCATGGAAGATGAGCCACCTCCAAAAAACTGAAGACAGAGGACAGCCTCATGCCAGAGGAG
 GAGTTCCTGCGCAGAAACAAGGGTCCAGTGTCCATCAAAGTCCAGGTGCCCAACATGCAGGATAAGACGG
 AATGGAAGTGAATGGGCAGGTGCTGGTCTTACCCTCCCACTCACGGACCAGGTCTCTGTCAATTAAGGT
 GAAGATTCATGAAGCCACAGGCATGCCTGCAGGAAACAGAAGCTACAGTATGAGGGTATCTTCATCAA
 GATTCAACTCACTGGCTTACTACAACATGGCCAATGGCGCAGTCATCCACCTGGCCCTCAAGGAGAGAG
 GCGGGAGGAAGAAG

ACGCGTACGCGGCCGCTCGAG – GFP Tag – GTTTAA

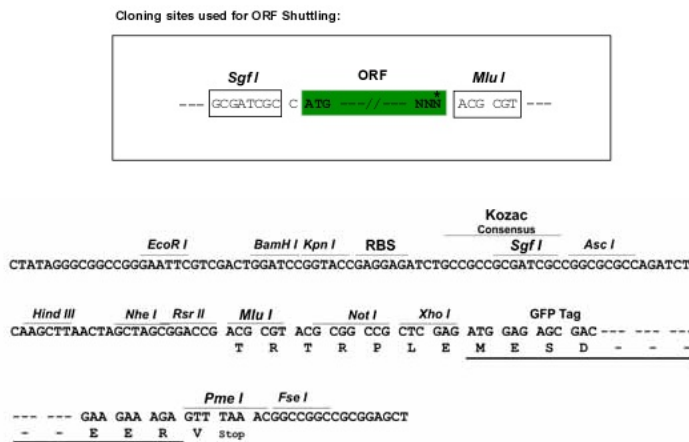
Protein Sequence: >RG218372 representing NM_001005409
 Red=Cloning site Green=Tags(s)

```
MPAGPVQAVPPPPVPTEPKQPTTEEEASSKEDSAPSKPVVGGIIYPPPEVRNIVDKTASFVARNGPEFEAR
IRQNEINNPKFNFLNPNDPYHAYRHKVSEFKEGKAQFVARNGRQFLTQLMQKEQRNYQDFLRPQHSLF
NYFTKLVEQYTKILIPPKGLFSLKKEAENPREVLQVCYRVEWAKFQERERKKEEEEEKEKERVAYAQID
WHDFVVVETVDFQPNEQGNFPPPTTPEELGARILIQERYEKFGESEEVEMEVEVEDEEDDKQEKAEEPPSQ
LDQDTQVQDMDEGSDDEEEGQKVPPPETPMPPLPPTPDQVIVRKDYDPKASKPLPPAPAPDEYLVSPI
TGEKIPASKMQEHMRIGLLDPRWLEQRDRSIREKQSDDEVYAPGLDIESSLKQLAERRTDIFGVEETAIG
KKIGEEIIQKPEEKVTWDGHSMSMARTQAAQANITLQEQIEAIHKAKGLVPEDDTKEKIGPSKPNIPQ
QPPPPSSATNIPSSAPPITSVPRPPTMPPVVRTTVVSAVPMRPPMASVVRLPPGSVIAPMPPIIHAPR
INVVPMPPSAPPIMAPRPPMIVPTAFVPAPPVAPVPAPAMPVHPPPPMEDEPTSKKLTEDSLMPEE
EFLRRNKGVPVSIKVQVPMQDKTEWKLNGQVLFVTLPLTDQVSVIKVKIHEATGMPAGKQKLQYEGIFIK
DSNSLAYYNMANGAVIHLALKERGGRRK
```

TRTRPLE - GFP Tag - V

Restriction Sites: SgfI-MluI

Cloning Scheme:



ACCN: NM_001005409

ORF Size: 2184 bp

OTI Disclaimer: The molecular sequence of this clone aligns with the gene accession number as a point of reference only. However, individual transcript sequences of the same gene can differ through naturally occurring variations (e.g. polymorphisms), each with its own valid existence. This clone is substantially in agreement with the reference, but a complete review of all prevailing variants is recommended prior to use. [More info](#)

OTI Annotation: This clone was engineered to express the complete ORF with an expression tag. Expression varies depending on the nature of the gene.

Components: The ORF clone is ion-exchange column purified and shipped in a 2D barcoded Matrix tube containing 10ug of transfection-ready, dried plasmid DNA (reconstitute with 100 ul of water).

Reconstitution Method:

1. Centrifuge at 5,000xg for 5min.
2. Carefully open the tube and add 100ul of sterile water to dissolve the DNA.
3. Close the tube and incubate for 10 minutes at room temperature.
4. Briefly vortex the tube and then do a quick spin (less than 5000xg) to concentrate the liquid at the bottom.
5. Store the suspended plasmid at -20°C. The DNA is stable for at least one year from date of shipping when stored at -20°C.

RefSeq: [NM_001005409.1](#), [NP_001005409.1](#)

RefSeq Size: 4941 bp

RefSeq ORF: 2187 bp

Locus ID: 10291

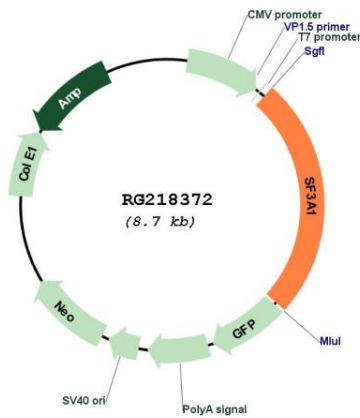
Cytogenetics: 22q12.2

Protein Families: Druggable Genome

Protein Pathways: Spliceosome

Gene Summary: This gene encodes a subunit of the splicing factor 3a protein complex. The splicing factor 3a heterotrimer is a component of the mature U2 small nuclear ribonucleoprotein particle (snRNP). U2 small nuclear ribonucleoproteins play a critical role in spliceosome assembly and pre-mRNA splicing. [provided by RefSeq, Aug 2014]

Product images:



Circular map for RG218372