

Product datasheet for **RG218368**

GUCY2D (NM_000180) Human Tagged ORF Clone

Product data:

Product Type:	Expression Plasmids
Product Name:	GUCY2D (NM_000180) Human Tagged ORF Clone
Tag:	TurboGFP
Symbol:	GUCY2D
Synonyms:	CACD1; CG-E; CORD5; CORD6; CSNB1I; CYGD; GUC1A4; GUC2D; LCA; LCA1; RCD2; retGC; RETGC-1; ROS-GC1; ROSGC
Mammalian Cell Selection:	Neomycin
Vector:	pCMV6-AC-GFP (PS100010)
E. coli Selection:	Ampicillin (100 ug/mL)
ORF Nucleotide Sequence:	>RG218368 representing NM_000180 Red=Cloning site Blue=ORF Green=Tags(s)

TTTTGTAATACGACTCACTATAGGGCGGCCGGAATTCGTCGACTGGATCCGGTACCGAGGAGATCTGCC
GCC**GCGATCGCC**

ATGACCGCTGCGCCCGCGAGCGGGTGGGCTTCCGGACCCCGGGCTCTGCGGTCCCGCGTGGTGGGCTC
CGTCCCTGCCCGCCTCCCCGGGCCCTGCCCGGCTCCCGCTCCTGCTGCTCTGCTTCTGCTGCAGCC
CCCCGCCCTCTCCGCGTGTTCACGGTGGGGTCTGGGCCCTGGGCTTGCACCCCATCTTCTCTCGG
GCTCGCCCGACCTGGCCGCCCGCTGGCCGCCCGCCCTGAACCGGACCCCGGCTGGCAGGCGGT
CCCGCTTCGAGGTAGCGTGTGCCGAGCCTTCCCGGACCGCGGCTCGCTGGGGCCGTGCTCCCG
GCTGGCCCGGTGTCGGGCTCGTGGTCCGGTGAACCTGCGGCTGCCGCCAGCCGAGCTGCTCGCC
GAAGAAGCCGGGATCGCGCTGGTCCCTGGGGTCCCTGGACGCAGGCGGAGGGCACCACGGCCCTG
CGGTGACCCCGCGCGGATGCCCTCTACGCCCTGCTTCGCGCATTCGGCTGGCCGCGCGTGGCCCTGGT
CACCGCCCCCAGGACCTGTGGGTGGAGGCGGGACGCTCACTGTCCACGGCACTCAGGGCCCGGGGCTG
CCTGTCGCTCCGTGACTTCCATGGAGCCTTGGACCTGTCTGGAGCCCGGAGGCCCTGAGGAAGGTT
GGGACGGGCCAGGGTACAGCAGTGATCATGGTGTGACTCGGTGCTGCTGGTGGCGAGGAGCAGCG
CTACCTCTGGAGGCCGAGAGGAGTGGGCTGACCGATGGCTCCCTGGTCTTCTGCCCTTCGACAGC
ATCCACTACGCCCTGTCCCAGGCCCGGAGGCCCTGGCCGCACTGCCAACAGCTCCAGCTTCGACAGG
CCCACGATGCCGTGCTCACCTCACGCGCACTGTCCCTGAAGGCAGCGTGTGGACAGCCTGCGCAG
TATGACGCGGTCTTCTTGTGGCAAGGGCGTGGCAGAAGCGCGGCTGCCGAGGTGGCAGATGGGTGT
CCGGAGCAGTGTGGCCGCCACATCCGGGATGCGCAGGTCCCTGGCTTCTGCGGGACCTAGGAGAGA
CGAGGAGCCCCATTCTGCTGTAGACACGGACGCGGGGAGACCGGCTTTTTGCCACATACATGCTG
GATCCTGCCCGGGCTCCTTCTCTCCGCCGTACCCGGATGCACTTCCCGCGTGGGGATCAGCACCCG
GACCTGACCCCTCGTGTGTTTCATCAAACAACATCTGCGGTGGAGGACTGGAGCCGGGCTCGTCTT



TCTTGGCTTCTCCTGGTGGTTGGGATGGGGCTGGCTGGGGCCTTCTGGCCATTATGTGAGGCACCGG
 CTACTTCACATGCAAAATGGTCTCCGGCCCAACAAGATCATCCTGACCGTGGACGACATCACCTTCTCC
 ACCACATGGGGGACCTCTCGAAAGGTGGCCAGGGGAGTCGATCAAGTCTGGGTGCCCGCAGCATGTC
 AGACATTGCGAGCGGCCAGCCAAACACTTGGACAGCCCAACATTGGTGTCTATGAGGGAGACAGGGTT
 TGGCTGAAGAAATCCCAGGGGATCAGCACATAGCTATCCGCCAGCAACCAAGACGGCCTTCTCCAAGC
 TCCAGGAGCTCCGGCATGAGAACGTGGCCTCTACCTGGGGCTTTTCTGGCTCGGGGAGCAGAAGGCC
 TCGCCCTCTGGGAGGGCAACCTGGCTGTGGTCTCAGAGCACTGCACGCGGGGCTCTCTCAGGACCTC
 CTCGCTCAGAGAGAAATAAAGCTGGACTGGATGTTCAAGTCTCCCTCCTGCTGGACCTTATCAAGGGAA
 TAAGGTATCTGCACCATCGAGGCGTGGCTCATGGGCGGCTGAAGTCACGGAAGTGCATAGTGGATGGCAG
 ATTCGTA CTCAAGTCACTGACCACGGCCACGGGAGACTGCTGGAAGCACAGAAGGTGCTACCGGAGCCT
 CCCAGAGCGGAGGACCAGCTGTGGACAGCCCGGAGCTGCTTAGGGACCCAGCCCTGGAGCGCCGGGAA
 CGCTGGCCGGCGAGCTTTAGCTTGGCCATCATCATGCAAGAAGTAGTGTGCCGAGTGCCCTTATGC
 CATGCTGGAGCTACTCCCGAGGAAGTGGTGCAGAGGGTGGGAGCCCCCTCCACTGTGTGGCCCTTG
 GTGTCCATGGACCAGGCACCTGTGAGTGTATCCTCCTGATGAAGCAGTGTGGCAGAGCAGCCGGAAC
 TTCGGCCCTCCATGGACCACACCTTCGACTGTTCAAGAACATCAACAAGGGCCGAAGACGAACATCAT
 TGA CTGATGCTTCGGATGCTGGAGCAGTACTCTAGTAACCTGGAGGATCTGATCCGGGAGCGCAGGGAG
 GAGCTGGAGCTGAAAAGCAGAAGACAGACCGGCTGCTTACACAGATGCTGCCTCCGCTGTGGCTGAGG
 CCTTGAAGACGGGGACACCAGTGGAGCCGAGTACTTTGAGCAAGTGACTGTACTTTAGTGACATTGT
 GGGCTTACCACCATCTCTGCCATGAGTGAGCCATTGAGGTTGTGGACCTGCTCAACGATCTCTACACA
 CTCTTTGATGCCATATTGGTCCCACGATGTCTACAAGTGGAGACAATAGGGGACGCCTATATGGTGG
 CCTCGGGGCTGCCCCAGCGGAATGGGCAGCGACACGGCAGAGATCGCCAACATGTCACTGGACATCCT
 CAGTGGCGTGGCACTTCCGCATGCCCATATGCCTGAGGTTCCCGTGGCATCCGATAGGCCCTGCAC
 TCGGGTCCATGCGTGGCAGGCGTGGTGGCCCTCACCATGCCGCGTACTGCTGTTTGGGACACGTCAC
 ACACCGCCTCGCGCATGGAGTCCACCGGCTGCCTTACCGCATCCACGTGAACCTTGAAGTGTGGGGAT
 TCTCCGTGCTCTGGACTCGGGCTACCAGGTGGAGCTGCGAGGCCGACGAGCTGAAGGGCAAGGGCGCC
 GAGGACACTTTCTGGCTAGTGGGAGACGCGGCTTCAACAAGCCCATCCCCAAACCGCTGACCTGCAAC
 CGGGGTCCAGCAACCACGGCATCAGCCTGCAGGAGATCCCACCGAGCGGCGACGGAAGCTGGAGAAGGC
 GCGGCCGGCCAGTTCTCT

ACGCGTACGCGGCCGCTCGAG – GFP Tag – GTTTAA

Protein Sequence:

>RG218368 representing NM_000180
 Red=Cloning site Green=Tags(s)

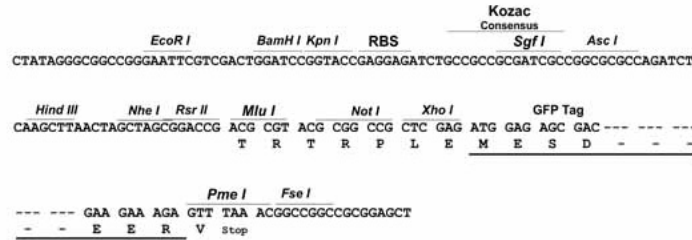
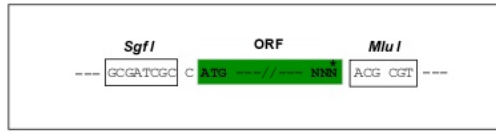
MTACARRAGGLPDPGLCGPAWWAPSLPRLPRALPRLPLLLLLLLLQPPALSAVFTVGVLPWACDPIFSR
 ARPDLAARLAAARLNRDPGLAGGPRFEVALLPEPCRTPGSLGAVSSALARVSGLVGPVNPAAACRPAELLA
 EEAGIALVPWGPCPWTQAEGTTAPAVTPAADALYALLRAFWARVALVTAPQDLWVEAGRSLSTALRARGL
 PVASVTSMEPLDLSGAREALRKVRDGPRTAVIMVMHSVLLGGEEQRYLLEAAEELGLTDGSLVFLPFDT
 IHYALSPGPEALAAANSSQLRRAHDAVLT.LTRHCPSEGSVLDLRRRAQERRELPSDLNLQQVSPLFGTI
 YDAVFLARGVAEAAAAGGRWVSGAAVARHIRDAQVPGFCGDLGGDEEPPFVLLD.TDAAGDRLFATYML
 DPARGSFSLSAGTRMHFPRGGSAPGDPSCWFDPNNICGGGLEPGLVFLGFLLVVGMLAGAF.LAHYVRRR
 LLHMQMVS.GPNKIILTVDDITFLPHGGT.SRKVAQGSRSSLGARSMSDIRSGPSQHLDSPNIGVYEGDRV
 WLKKFPDQHI.AIRPATKTA.FSKLQELRHENVALYLGLFLARGAEGPAALWENLAVVSEHCTRGS.LQDL
 LAQREIKLDWMFKSSLLLDL.IKIRYLHHRGVAHGRLKSRNCIVDGRFV.LKITD.HGHGRLL.EAQVLP
 PRAEDQLWTAPELLRDPALERRGTLAGDV.FSLA.IIMQEVVCRSAPYAMLELTP.EEVVQVRVSPPLCRPL
 VSM.DQAPVECI.LLMKQCWAEQPELRPSMDHTFDL.FKNINKGRKTN.IIDSMLRMLEQYSSNLEDL.IRERE
 ELELEKQKTD.RLLTQMLPPSVAEALKTGTPVEPEYFEQV.TLYFSDIVGFTTISAMSEPIEVVDLLNDLYT
 L.FDAIIGSHDVYK.VETIGDAYMVASGLPQRNGQRHAAEIANMSLDIL.SAVGTFMRHMPEVPV.RIRI
 GLHSGPCVAGVVGLTMPRYCLFGD.VNTASRMESTGLPYRIHVNLSTVGILRALDSGYQVELGRTELKKGGA
 EDTFWLVGRRGFNKPIPKPPDLQP.GSSNHGISLQEIPPERRR.RKLEKARPGQFS

TRTRPLE – GFP Tag – V

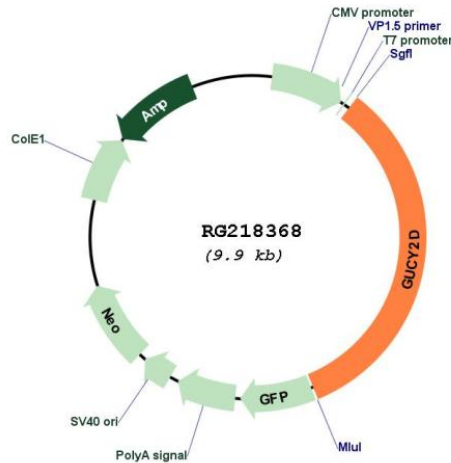
Restriction Sites: SgfI-MluI

Cloning Scheme:

Cloning sites used for ORF Shutting:



Plasmid Map:



ACCN: NM_000180

ORF Size: 3309 bp

OTI Disclaimer: The molecular sequence of this clone aligns with the gene accession number as a point of reference only. However, individual transcript sequences of the same gene can differ through naturally occurring variations (e.g. polymorphisms), each with its own valid existence. This clone is substantially in agreement with the reference, but a complete review of all prevailing variants is recommended prior to use. [More info](#)

OTI Annotation: This clone was engineered to express the complete ORF with an expression tag. Expression varies depending on the nature of the gene.

Components:	The ORF clone is ion-exchange column purified and shipped in a 2D barcoded Matrix tube containing 10ug of transfection-ready, dried plasmid DNA (reconstitute with 100 ul of water).
Reconstitution Method:	<ol style="list-style-type: none">1. Centrifuge at 5,000xg for 5min.2. Carefully open the tube and add 100ul of sterile water to dissolve the DNA.3. Close the tube and incubate for 10 minutes at room temperature.4. Briefly vortex the tube and then do a quick spin (less than 5000xg) to concentrate the liquid at the bottom.5. Store the suspended plasmid at -20°C. The DNA is stable for at least one year from date of shipping when stored at -20°C.
RefSeq:	<u>NM_000180.2</u>
RefSeq Size:	3621 bp
RefSeq ORF:	3312 bp
Locus ID:	3000
UniProt ID:	<u>Q02846</u>
Cytogenetics:	17p13.1
Protein Families:	Druggable Genome, Protein Kinase, Transmembrane
Protein Pathways:	Olfactory transduction, Purine metabolism
Gene Summary:	This gene encodes a retina-specific guanylate cyclase, which is a member of the membrane guanylyl cyclase family. Like other membrane guanylyl cyclases, this enzyme has a hydrophobic amino-terminal signal sequence followed by a large extracellular domain, a single membrane spanning domain, a kinase homology domain, and a guanylyl cyclase catalytic domain. In contrast to other membrane guanylyl cyclases, this enzyme is not activated by natriuretic peptides. Mutations in this gene result in Leber congenital amaurosis and cone-rod dystrophy-6 diseases. [provided by RefSeq, Dec 2008]