

Product datasheet for **RG218361**

EXOSC3 (NM_001002269) Human Tagged ORF Clone

Product data:

Product Type: Expression Plasmids
Product Name: EXOSC3 (NM_001002269) Human Tagged ORF Clone
Tag: TurboGFP
Symbol: EXOSC3
Synonyms: bA3J10.7; CGI-102; hRrp-40; p10; PCH1B; RRP40; Rrp40p
Mammalian Cell Selection: Neomycin
Vector: pCMV6-AC-GFP (PS100010)
E. coli Selection: Ampicillin (100 ug/mL)
ORF Nucleotide Sequence: >RG218361 representing NM_001002269
 Red=Cloning site Blue=ORF Green=Tags(s)

TTTTGTAATACGACTCACTATAGGGCGGCCGGAATTCGTCGACTGGATCCGGTACCGAGGAGATCTGCC
 GCC**CGATCGCC**

ATGGCCGAACCTGCGTCTGTGCGGGCTGAATCTCTCGCGGGCAGCAGGGCGCGCTGCACGCACAGTAC
 TAGGTCAGGTGGTCTCCGGGTGAGGAGCTGCTCCTGCCGGAACAGGAGGACCGGAAGGCCCTGGGGG
 TGCAGTGGAGCGACCGTTGAGCCTGAATGCTAGAGCGTGTCTCGGGTGCAGCTTGTATGCGGTCCGGGC
 CTTGCGCGCTGTGGGACCGCTGCTGGTCACCAAGTGCAGCGCCCTCCGTACAAGGAGCCCGGCAGTG
 GCAGCGCGCGGTGTTTACTGGGTGGACTCTCAGCAGAAGCGGTATGTTCCAGTAAAAGGAGACCATGT
 GATTGGCATAAGTACAGCTAAATCTGGAGATATATTCAAAGTTGATGTTGGAGGGAGTGAGCCAGCTTCT
 TTGCTTACTTGTCAATTTGAAGGTGCAACTAAAAGAAACAGACCAATGTGCAGGCTATTAGCTCCAGAT
 TG

ACGCGTACGCGGCCGCTCGAG - GFP Tag - GTTTAA

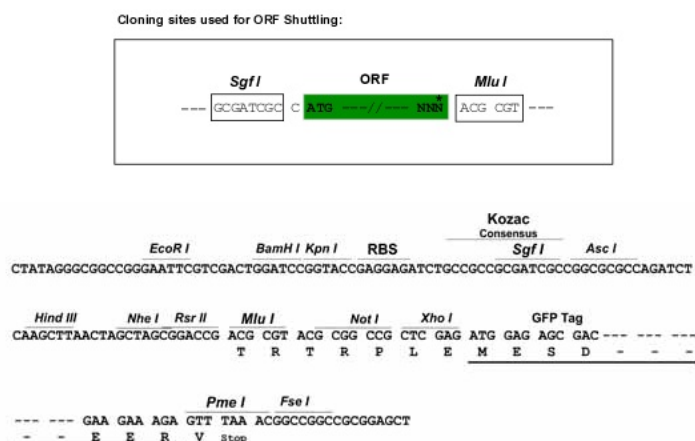
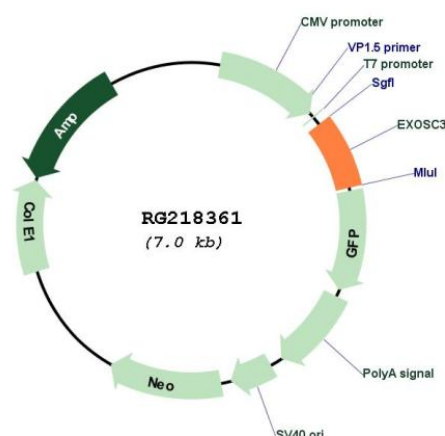
Protein Sequence: >RG218361 representing NM_001002269
 Red=Cloning site Green=Tags(s)
 MAEPASVAAESLAGSRARAARTVLGQVVLPGEELLLPEQEDAEGPGGAVRPLSLNARACSRVRVCGPG
 LRRCGDRLLVTKCGRRLRHKEPGSGSGGVVWDSQQKRYVPVKGDHVIIVTAKSGDIFKVDVGGSEPAS
 LSYLSFEGATKRNRPNVQAISSRL

TRTRPLE - GFP Tag - V

Restriction Sites: Sgfl-MluI



[View online »](#)

Cloning Scheme:

Plasmid Map:

ACCN: NM_001002269

ORF Size: 492 bp

OTI Disclaimer: The molecular sequence of this clone aligns with the gene accession number as a point of reference only. However, individual transcript sequences of the same gene can differ through naturally occurring variations (e.g. polymorphisms), each with its own valid existence. This clone is substantially in agreement with the reference, but a complete review of all prevailing variants is recommended prior to use. [More info](#)
OTI Annotation: This clone was engineered to express the complete ORF with an expression tag. Expression varies depending on the nature of the gene.

Components:	The ORF clone is ion-exchange column purified and shipped in a 2D barcoded Matrix tube containing 10ug of transfection-ready, dried plasmid DNA (reconstitute with 100 ul of water).
Reconstitution Method:	<ol style="list-style-type: none">1. Centrifuge at 5,000xg for 5min.2. Carefully open the tube and add 100ul of sterile water to dissolve the DNA.3. Close the tube and incubate for 10 minutes at room temperature.4. Briefly vortex the tube and then do a quick spin (less than 5000xg) to concentrate the liquid at the bottom.5. Store the suspended plasmid at -20°C. The DNA is stable for at least one year from date of shipping when stored at -20°C.
RefSeq:	<u>NM_001002269.2, NP_001002269.1</u>
RefSeq Size:	1070 bp
RefSeq ORF:	495 bp
Locus ID:	51010
UniProt ID:	<u>Q9NQT5</u>
Cytogenetics:	9p13.2
Protein Families:	Stem cell - Pluripotency
Protein Pathways:	RNA degradation
Gene Summary:	This gene encodes a non-catalytic component of the human exosome, a complex with 3'-5' exoribonuclease activity that plays a role in numerous RNA processing and degradation activities. Related pseudogenes of this gene are found on chromosome 19 and 21. Alternatively spliced transcript variants encoding different isoforms have been described. [provided by RefSeq, Jun 2012]